



2024

---

# STATE LEGISLATIVE PRIORITIES

# OUR REGION AT-A-GLANCE



**18.7M**  
RESIDENTS



**15TH**  
LARGEST  
ECONOMY  
WORLDWIDE



**\$1.6T**  
REGIONAL  
GDP



**40%**  
NATION'S  
CONTAINER  
IMPORTS

**6**  
COUNTIES



**191**  
CITIES

**47.6%**  
STATE  
POPULATION

**5.7%**  
U.S.  
POPULATION

**38,618**  
SQUARE MILES



# ABOUT SCAG

Founded in 1965, the Southern California Association of Governments (SCAG) is a public agency established as a Joint Powers Authority under California state law that convenes local governments and agencies to address regional issues.

SCAG leads Southern California, serving as the unified voice of the region and empowering local jurisdictions to work toward regional solutions. The SCAG region encompasses six counties (Imperial, Los Angeles, Orange, Riverside, San Bernardino and Ventura) and 191 cities in an area covering more than 38,000 square miles.

The agency develops long-range regional transportation plans, including sustainable communities strategy and growth forecast components, regional transportation improvement program, regional housing needs allocations, and a portion of the South Coast Air Quality management plans.

SCAG is governed by an 86-member board of directors known as the Regional Council, whose membership includes city councilmembers, mayors and county supervisors, and representatives of the region's tribal governments, air quality management districts and transit operators.

## SCAG LEADERSHIP

**Art Brown**

*City of Buena Park  
RC District #21*



**PRESIDENT**

**Curt Hagman**

*County of San Bernardino*



**FIRST VICE PRESIDENT**

**Cindy Allen**

*City of Long Beach  
RC District #30*



**SECOND VICE PRESIDENT**

**Jan C. Harnik**

*Riverside County  
Transportation Commission  
(RCTC)*



**IMMEDIATE PAST PRESIDENT**

**Patricia Lock Dawson**

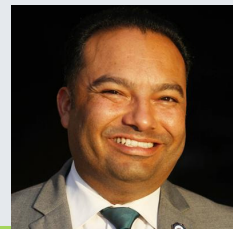
*City of Riverside  
RC District #68*



**LEGISLATIVE COMMITTEE CHAIR**

**José Luis Solache**

*City of Lynwood  
RC District #26*



**LEGISLATIVE COMMITTEE VICE CHAIR**

# SCAG'S STATE LEGISLATIVE PRIOR

SCAG maintains a State Legislative Platform representing the Regional Council's positions on policy initiatives related to SCAG's core areas that require leadership and support of the State Legislature.

## 1 Protect Regional Early Action Planning (REAP) 2.0 funding and reject the Governor's proposal to cut the program.

- Created in 2021, the REAP 2.0 program provides local funding for projects that accelerate progress toward California's housing and climate goals.
- REAP 2.0 is the only program exclusively designed to implement the region's Sustainable Communities Strategies (SCS) required by Senate Bill (SB) 375 (2008).
- The Governor's January budget proposed cutting REAP 2.0 in half – from \$600 million to \$300 million.
- Meanwhile, in July of 2023, the California Department of Housing and Community Development (HCD) committed \$246 million in REAP funding to SCAG.
- SCAG has since sub-allocated \$192 million of our \$246 million allocation to 100 transformative local projects that implement the Regional Housing Needs Assessment (RHNA) goal of 1.34 million housing units and the greenhouse gas reducing strategies contained within Connect SoCal, the Regional Transportation Plan/ Sustainable Communities Strategy (RTP/SCS) for Southern California.
- The Governor's proposed cut to REAP 2.0 will severely impact Southern California's ability to meet state-mandated housing production goals.
- We urge the Legislature to reject the Governor's proposal to halve REAP 2.0 and protect this crucial program.

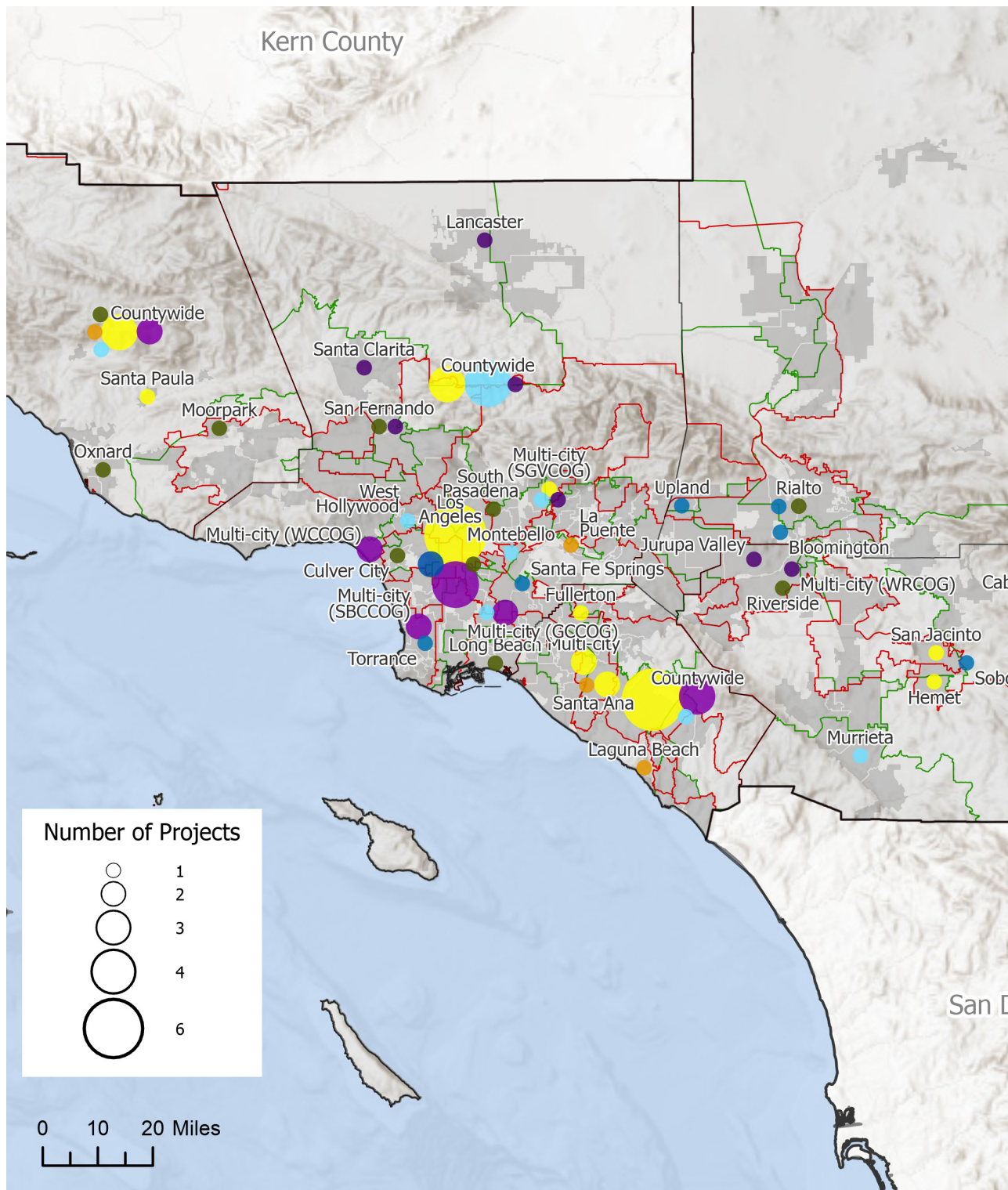
## 2 Support Assembly Bill 2485 (Carrillo) to improve accuracy and transparency in the development of the Regional Housing Needs Assessment determination.

- AB 2485 would establish procedures for HCD to publicize its data sources, analyses and methodology before finalizing the regional determinations. In addition, AB 2485 would require HCD to establish and convene a panel of experts to advise the agency on its assumptions, data and analyses before finalizing a region's RHNA determination.
- The Regional Housing Needs Assessment (RHNA) is a state-mandated, local program that determines existing and projected housing needs for each jurisdiction within California on an eight-year cycle.
- At the beginning of each cycle, the California Department of Housing and Community Development (HCD) determines the total housing need for a given region and provides a RHNA determination to each regional council of governments (COG) in California.
- Each COG is responsible for developing a methodology to distribute the need to cities and counties, which must then plan for their share of the regional need by updating the Housing Elements of their General Plans.
- In March 2022, the California State Auditor found errors in HCD's regional determination calculations. The audit found that there was a reduced housing need determination in two of the three COG it had reviewed, due to a lack of sufficient review.
- After the 6th Cycle RHNA, SCAG conducted an engagement process to understand opportunities to improve the RHNA process.
- As a result, SCAG is sponsoring Assembly Bill (AB) 2485, which seeks to increase the accuracy and transparency of the RHNA determination.

## 3 Prioritize investments in the Active Transportation Program and Infill Infrastructure Grant Program that implement the Sustainable Communities Strategy.

- SB 375 (2008) requires regional metropolitan planning organizations to develop Sustainable Communities Strategies (SCS), a long-range plan that aligns transportation, housing and land-use decisions toward the reduction of greenhouse gas (GHG) emissions.
- SCAG's SCS for Southern California, Connect SoCal, includes dozens of GHG reduction strategies, including focusing growth near destinations and mobility options, promoting diverse housing choices, leveraging technological innovations, supporting sustainability policies and promoting a green region.
- The IIG is an important public-private partnership that provides funding for essential infill housing development in climate-friendly, transit-accessible locations.
- Since its creation, IIG has revitalized infrastructure in urbanized areas to handle higher-density affordable and mixed-income housing.
- The IIG received a \$225 million augmentation in the 2023-24 fiscal year budget, which our member jurisdictions were ready to leverage to accelerate housing production in the region; however, the Governor's proposed budget proposes cutting \$200 million from this program
- The ATP was created in 2013 to encourage increased active transportation, which is a key strategy in meeting the state's environmental, economic and equity goals.
- ATP funding develops invaluable bike and pedestrian infrastructure, increases safety and mobility for non-motorized users, builds safe routes to schools, and develops active transportation plans.
- Despite its need and demand, the Governor's January budget proposes to reduce the ATP by \$200 million. We urge the Legislature to protect the commitments made to ATP.
- The IIG and ATP provide critical funding for housing and transportation projects necessary to achieve our GHG reduction targets and implement our SCS.





## REAP 2.0 Project Locations

**● CTC Program**

County Transportation Commission Partnership Program

**● Call 4**

Sustainable Communities Program Call for Applications for Civic Engagement, Equity and Environmental Justice

**● HIPP**

Housing Infill on Public and Private Lands Pilot Program

**● NOFA**

Lasting Affordability Program

**● RUSH**

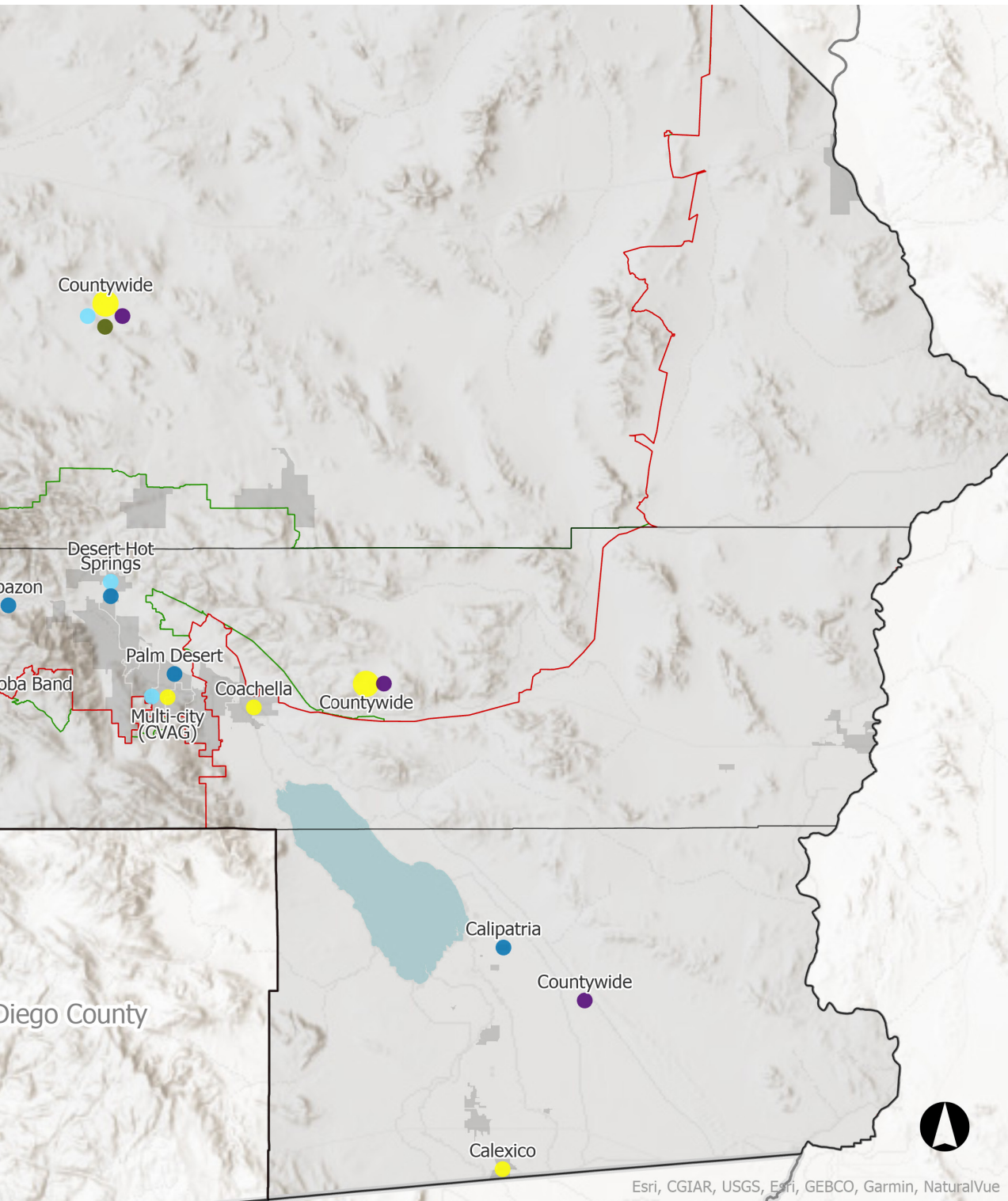
Regional Urban Transit Pilot Program

**● SRP 2**

Subregional

Source: SCAG 2024

(Please note that information shown on this map represents the general locations of cities)



ilities Supporting Housing  
m

Partnership Program 2

 California Assembly Districts

 California Senate Districts



, counties and councils of governments, not specific project locations.)

# UPDATE ON INCLUSIVE ECONOMIC RECOVERY STRATEGY

In 2022, Senator Susan Rubio (D-West Covina) demonstrated exemplary leadership securing \$3.5 million for SCAG in one-time state funding to implement an Inclusive Economic Recovery Strategy (IERS). This effort has five study areas and deliverables:

- Supporting expansion of the number of and access to middle-wage jobs;
- Strengthening supply chains and access to contracting opportunities for small, minority- and woman-owned businesses;
- Developing recommendations for expanding construction apprenticeships and training;
- Providing regional economic data;
- Addressing barriers to accessing training and employment.

These efforts originated from SCAG’s commitment to racial and social equity, outlined in a resolution championed by then-SCAG Regional Council President Rex Richardson (Long Beach) and adopted in July 2020. As part of the resolution, SCAG committed to developing the IERS, which the Regional Council approved the following summer. The IERS identifies local partnership opportunities to foster inclusive economic prosperity as the region continues to grow and learn from the economic and social disruptions of the COVID-19 pandemic, and allows SCAG to explore the integration of policy goals related to inclusive economic growth in Connect SoCal.

The IERS is grounded in data analysis and best practices in equity and inclusion, and incorporates stakeholder feedback. The IERS reflects needs raised during stakeholder convenings and puts forth strategies for SCAG’s role in advancing equitable regional economic recovery and growth.

The Inclusive Contracting Toolkit is available at [IERS website](#), and the economic analysis on equity was published in the [2023 Economic Summit Regional Briefing Book](#).

## Projects and Timeline



### Job Quality Index

*Identify and quantify quality jobs for SCAG region*

- Completed Framework – December 2023



### Apprenticeships Report

*Develop recommendations and best practices for expanding pipeline to construction training and apprenticeships to help meet regional housing needs*

- Project Start – Winter 2022
- Projected Completion – Fall 2024



### Economic Impacts Study of Racial and Gender Inequality

*Identify economic impacts of racial and gender inequity for each county in SCAG region*

- Published Study in SCAG Regional Briefing Book – December 2023



### Human Capital Needs Report

*Develop recommendations and best practices for addressing barriers to training and employment, with focus on lower-income communities and communities of color*

- Project Start – Spring 2024
- Projected Completion – Fall 2024



### Inclusive Procurement Toolkits

*Support our region’s diverse local businesses by expanding public and private contracting opportunities*

- Published Toolkit – November 2023



### Tribal Data Needs Assessment for Tribal Resilience

*Identify and document strategies to inform more inclusive data collection efforts for Tribal communities, in collaboration with Brookings Metro*

- Project Start – February 2024
- Projected Completion – Fall 2024



### Family-Supporting Jobs Plans

*Expand access to living-wage jobs*

- Project Start – Spring 2023
- Projected Completion – Fall 2024



# A PLAN FOR THE REGION'S FUTURE



SCAG anticipates adopting an update to its Regional Transportation Plan/Sustainable Communities Strategy (RTP/SCS), known as Connect SoCal 2024, in April 2024. Connect SoCal 2024 represents the vision for Southern California's future, including policies, strategies and projects to advance the region's mobility, housing and communities, economy and environment through 2050.

The plan provides strategies for addressing transportation and land use challenges, as well as opportunities to achieve regional emissions and greenhouse gas reduction targets and is developed with input from local governments, county transportation commissions, tribal governments, non-profit organizations, businesses, and local stakeholders in SCAG's six-county region. The driving question behind this update: how can the region become more resilient and equitable?

Thousands of transportation projects are at the heart of the plan—ranging from railroad grade separations to more bicycle lanes, new transit hubs, highway safety improvements and replacement bridges. These investments are included in county-level plans developed by the region's six-county transportation commissions and can expand mobility choices, improve congestion and efficiency of the region's transportation network. While Connect SoCal includes more than 2,000 individual projects, operations and maintenance

for transit and passenger rail account for nearly 40 percent of the plan's expenditures, representing the largest expenditure category of the \$750 billion plan.

Connect SoCal is an important regional planning document that allows project sponsors to qualify for federal funding. The plan considers operations and maintenance costs for reliability, longevity and cost-effectiveness. In addition, Connect SoCal supports a combination of transportation and land use policies and strategies to guide the region to state greenhouse gas emission reduction targets and federal Clean Air Act requirements, preserve open space, improve public health and roadway safety, support our vital goods movement industry and use resources more efficiently.

Once Connect SoCal 2024 is adopted, implementation relies on decisions and actions of transportation agencies, local jurisdictions and the private sector. SCAG's role is to support local governments in implementing the plan through funding administration, research and resources. SCAG's legislative advocacy on the protection of the REAP 2.0 program and investments in the Infill Infrastructure Grant program and the Active Transportation Program are based on the importance of these programs in implementing this regional plan.

For more information, please visit the [Connect SoCal website](#).

## CONTACT

**Javiera Cartagena**

Chief Government and Public Affairs Officer  
Tel: (213) 236-1980  
cartagena@scag.ca.gov

**Kevin Gilhooley**

Legislative Affairs Manager  
Tel: (213) 236-1878 | Cell: (714) 317-2934  
gilhooley@scag.ca.gov

**Francisco Barajas**

Senior Legislative Affairs Analyst  
Tel: (213) 630-1400 | Cell: (951) 990-3327  
barajasf@scag.ca.gov

**David Angel**

Legislative Affairs Analyst  
Tel: (213) 630-1422 | Cell: (909) 518-5738  
angel@scag.ca.gov



Southern California Association of Governments  
900 Wilshire Blvd., Ste. 1700  
Los Angeles, CA 90017  
(213) 236-1800 | [www.scag.ca.gov](http://www.scag.ca.gov)