



SOUTHERN CALIFORNIA
ASSOCIATION OF GOVERNMENTS
900 Wilshire Blvd., Ste. 1700
Los Angeles, CA 90017
T: (213) 236-1800
www.scag.ca.gov

REGIONAL COUNCIL OFFICERS

President
Art Brown, Buena Park

First Vice President
Curt Hagman, County of San Bernardino

Second Vice President
Cindy Allen, Long Beach

Immediate Past President
Jan C. Harnik, Riverside County Transportation Commission

COMMITTEE CHAIRS

Executive/Administration
Art Brown, Buena Park

Community, Economic & Human Development
Frank Yokoyama, Cerritos

Energy & Environment
Deborah Robertson, Rialto

Transportation
Tim Sandoval, Pomona

MEETING OF THE

TECHNICAL WORKING GROUP

Thursday, March 21, 2024
10:00 a.m. – 12:00 p.m.

SCAG OFFICES
900 Wilshire Blvd., Ste. 1700
Los Angeles, CA 90017
(213) 236-1800

JOIN ZOOM MEETING

[HTTPS://SCAG.ZOOM.US/J/142774637](https://scag.zoom.us/j/142774637)

OR

DIAL BY YOUR LOCATION

+1 669 900 6833 US TOLL

+1 346 248 7799 US TOLL

MEETING ID: 142 774 637

If members of the public wish to review the attachments or have any questions on any of the agenda items, please contact Kevin Kane at (213) 236-1828 or via email at kane@scag.ca.gov. Agendas & Minutes for the Technical Working Group are also available at: <https://scag.ca.gov/technical-working-group>

SCAG, in accordance with the Americans with Disabilities Act (ADA), will accommodate persons who require a modification of accommodation in order to participate in this meeting. SCAG is also committed to helping people with limited proficiency in the English language access the agency's essential public information and services. You can request such assistance by calling (213) 630-1402. We request at least 72 hours (three days) notice to provide reasonable accommodations and will make every effort to arrange for assistance as soon as possible.

1. Final Connect SoCal 2024: Model Runs and Technical Reports Update

Sarah Dominguez

15 minutes

Verbal Update

2. Sustainable Communities Strategy (SCS) Consistency Language

Kevin Kane

15 minutes

[Packet page 5](#)

3. HELPR web mapping application proposed updates

Lyle Janicek

15 minutes

[Packet page 18](#)

4. Connect SoCal 2024 PEIR Status Update

Ryan Bañuelos

5 Minutes

Verbal update



TECHNICAL WORKING GROUP

Meeting Minutes (Abridged)

February 15, 2024

10 a.m. – 12 p.m.

The meeting was held via Zoom teleconferencing.

Membership Attendance

LAND USE AUTHORITIES

Champion, Siri	City of Santa Ana	Lauffer, Amanda	City of Anaheim
Chung, Chris	City of Garden Grove	Shiomoto-Lohr, Gail	City of Mission Viejo
Gable, Emily	City of Los Angeles	Vander Hyde, Candice	City of Lancaster
Ho, Andrew	City of Alhambra		
Kim, Susan	City of La Habra		

REGIONAL PARTNERS

Equina, Justin	OCCOG / City of Irvine
Garfio, Angel	OCTA
Huddleston, Lori	LA Metro
Lee, Josh	SBCTA

REGULATORY & COORDINATING AGENCIES

Dorantes, Michael	EPA
-------------------	-----

FIELD EXPERTS

Diep, Deborah	CDR/CSUF
---------------	----------

ALTERNATES & PUBLIC ATTENDEES

J Cristales-Cevallos
Matthew Emery
Matthew Taylor
Omar Galicia
Ruby Zaman, CDR/CSUF
Salah Momtaz



TECHNICAL WORKING GROUP

Meeting Summary

1. PREVIEW OF MARCH JOINT POLICY COMMITTEE MEETING AND SUMMARY OF MAJOR COMMENT RESPONSES

Sarah Dominguez shared a preview of the presentation to be shared with the Joint Policy Committee in March, including a summary of key themes and comment responses. Deborah Diep (CDR/CSUF) commented

2. SUMMARY OF GROWTH PROJECTION AND SOCIOECONOMIC DATA CHANGES FOR THE FINAL CONNECT SOCIAL 2024

Kevin Kane presented a summary of the changes made to the Connect SoCal 2024 growth projections and socioeconomic data after the public comment period. Gail Shiomoto-Lohr (City of Mission Viejo) and Deborah Diep commented

3. SUMMARY OF CONNECT SOCIAL COMMENTS RECEIVED – EQUITY ANALYSIS TECHNICAL REPORT

Annaleigh Ekman presented a summary of the comments received on the Connect SoCal 2024 Equity Analysis Technical Report and key revisions made. Gail Shiomoto-Lohr and Susan Kim (City of La Habra) commented; Sarah Dominguez and Lyle Janicek provided additional responses.

4. STATUS UPDATE ON THE PROPOSED FINAL PEIR

Ryan Bañuelos provided a brief status update on the proposed Final 2024 PEIR. Gail Shiomoto-Lohr commented.

Growth Data and Sustainable Communities Strategy (SCS) Consistency

Draft Connect SoCal 2024 Demographics and Growth Forecast Technical Report Section 5.5:

TAZ-LEVEL GROWTH FORECAST, GROWTH VISION, AND SCS CONSISTENCY

Connect SoCal 2024's TAZ-level household and employment projection is controlled not to exceed the maximum density of local general plans as conveyed by jurisdictions (except in the case of existing entitlements and development agreements) and reflects final input provided by local jurisdictions to SCAG between May and December 2022 during the Local Data Exchange process. As such they represent a snapshot in time and may not reflect subsequently available information.

TAZ-level household and employment growth projection data are a tool to understand how regional policies and strategies may be reflected at the neighborhood level. They are advisory and non-binding because they are developed only to conduct required modeling. There is no obligation by a jurisdiction to change its land use policies, General Plan, or regulations to be consistent with Connect SoCal TAZ-level growth projection data.

The TAZ-level household and employment growth projection in this Technical Report support the region's ability to meet federal air quality standards and achieve a state greenhouse gas reduction target; however, they do not reflect the only set of growth assumptions that will ensure these standards and targets are met.¹ The forecasted regional development pattern is not comprised of just the TAZ-level household and employment projects, it is wholly comprised of the policies, goals, and strategies of Connect SoCal.

¹ With respect to certain projects seeking streamlining pursuant to SB 375 (Cal. Govt. Code § 21155(a)), while the TAZ maps may assist in determining consistency with the SCS, there other development assumptions that would also be consistent with the SCS. The forecasted regional development pattern is comprised of the policies, goals, and strategies, of the Plan - it is not unilaterally reflected in the TAZ-level household and employment projections. Therefore, the TAZ maps should not be used to show project inconsistency. However, ultimately, the lead agency has the sole discretion to determine consistency.

Final Connect SoCal 2024:

- *Demographics and Growth Forecast Technical Report Section 5.5*
- *Land Use and Communities Technical Report Section 7.5*
- *Main Book “Supplementals” section*

In order to assess the ability of Connect SoCal 2024 to meet federal air quality standards and achieve the state greenhouse gas reduction target, SCAG develops small-area growth projection data for households and employment, which are known as Transportation Analysis Zone (TAZ) data. Although the data reflects all edits provided by local jurisdiction staff during the Connect SoCal 2024 Local Data Exchange (LDX) process between May and December 2022, it represents a snapshot in time and does not reflect subsequently available information or any entitled and pending project information not provided to SCAG during the LDX process (except for follow-up adjustments requested by local jurisdictions, e.g., County of Los Angeles in 2023). Additionally, the TAZ data does not project the full build-out or realization of localities’ general plans and may not fully reflect jurisdictions’ most recent housing elements (see Section 4.6). As local plans and approvals continue to evolve (driven by market forces influencing potential timing, location, and type of development), the applicable jurisdiction(s) should be contacted for the most up-to-date data.

Projections at the jurisdiction level or smaller geographies, including TAZ, are utilized to conduct required modeling and generally illustrate how regional policies and strategies may be reflected at the neighborhood level. They are advisory and non-binding. No jurisdiction has an obligation to change or conform its land use policies, general plan, housing element, zoning, regulations, or approvals of projects or plans, or consider or require mitigation measures or alternatives based on any numbers within or aggregates of Connect SoCal 2024 projections at any geographic level.

The Forecasted Regional Development Pattern is not solely based on TAZ-level household and employment projections. It is utilized to estimate the overall effect of the many policies, goals, and strategies of Connect SoCal. While TAZ-level projections enable the modeling of future conditions in order to evaluate conformity with federal air quality standards and achievement of the state greenhouse gas emissions reduction target; they do not reflect the only set of growth assumptions that may meet these standards and the target.

Therefore, insofar as housing and other laws or grants may require comparisons of projects or plans to Connect SoCal 2024, SCAG’s projections that are illustrated in TAZ data and maps—along with any related documents or modeling outputs—may not be used to determine the inconsistency of any plan or project in the region with Connect SoCal 2024. Local jurisdictions and other lead agencies shall have the sole discretion to determine a local project’s or plan’s consistency and/or alignment with Connect SoCal² (except where SCAG is required to make a consistency or alignment finding for grant purposes).

For example, local jurisdictions’ plans and approvals may be found to align with Connect SoCal 2024 if they directionally support a number of its objectives, such as by encouraging a mix of housing types that includes more affordable and multi-family housing rather than solely single-family, for-sale housing; providing for more housing located proximate to destinations or vice versa; or encouraging increased use

² Consistency and alignment are used interchangeably for the purpose of this document. Neither consistency nor alignment shall be understood to require the analysis of numbers within or aggregates of Connect SoCal 2024 projections at any geographic level.

of transit, ridesharing, biking, walking or micro-mobility, or hybrid and remote work to reduce commuting trips. (See Chapter 3 for additional examples). Such considerations may constitute an appropriate basis for a local jurisdiction to determine that a plan or project is consistent with Connect SoCal. Connect SoCal 2024 includes dozens of policies, goals, objectives, and measurements, any number of which may not be individually applicable to any given plan, project, or development. Such determinations could be evaluated based on (i) the totality of the goals, policies, and objectives of Connect SoCal 2024 and its associated Program Environmental Impact Report (PEIR), and (ii) the attributes of the local project or plan in overall relation to Connect SoCal. Consistency with Connect SoCal 2024 should not be evaluated in a prescriptive manner by applying SCAG's TAZ-level data, any aggregate thereof, or any particular one or more goals, policies, or objectives of Connect SoCal 2024 and its associated PEIR.

Household or employment growth included in the Connect SoCal 2024 TAZ-level data and maps may assist in determining consistency with the SCS for purposes of determining a project's eligibility for CEQA streamlining under SB 375 (Cal. Govt. Code § 21155(a)). TAZ-level data and maps may not otherwise be used or applied prescriptively to determine that a project is inconsistent with Connect SoCal 2024 for any purpose, given that they do not reflect the only set of growth assumptions that would be consistent with the SCS. Specifically, the TAZ-level data and maps do not supersede or otherwise affect locally approved housing elements, including those adopted in compliance with the 6th Cycle of the Regional Housing Needs Assessment (RHNA).



Connect SoCal 2024 SCS Consistency Language

Kevin Kane, PhD

Supervisor, Demographics and Growth Vision Program

March 21, 2024

Technical Working Group

WWW.SCAG.CA.GOV

Background

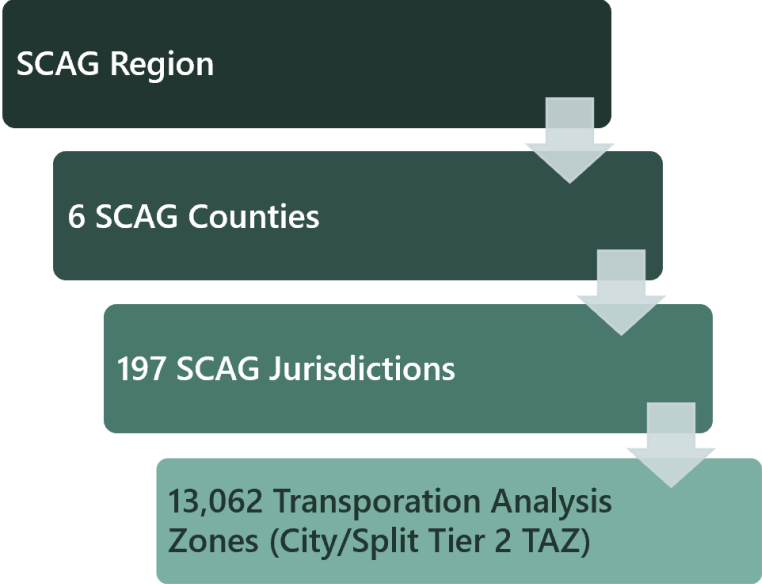
- SB 375 CEQA Streamlining
 - <https://scag.ca.gov/streamlining>
 - *“Sustainable Communities Project Exemption” for Transit Priority Projects (TPPs) that are declared Sustainable Community Projects, as well as streamlined CEQA analysis for TPPs and certain residential or mixed use projects.*
- Disclaimer language and use restrictions discussed at September 2023 TWG
- Draft Plan Data – see Excel and webmap with disclaimer language/use restrictions at <http://scag.ca.gov/local-data-exchange>

Forecasted Regional Development Pattern

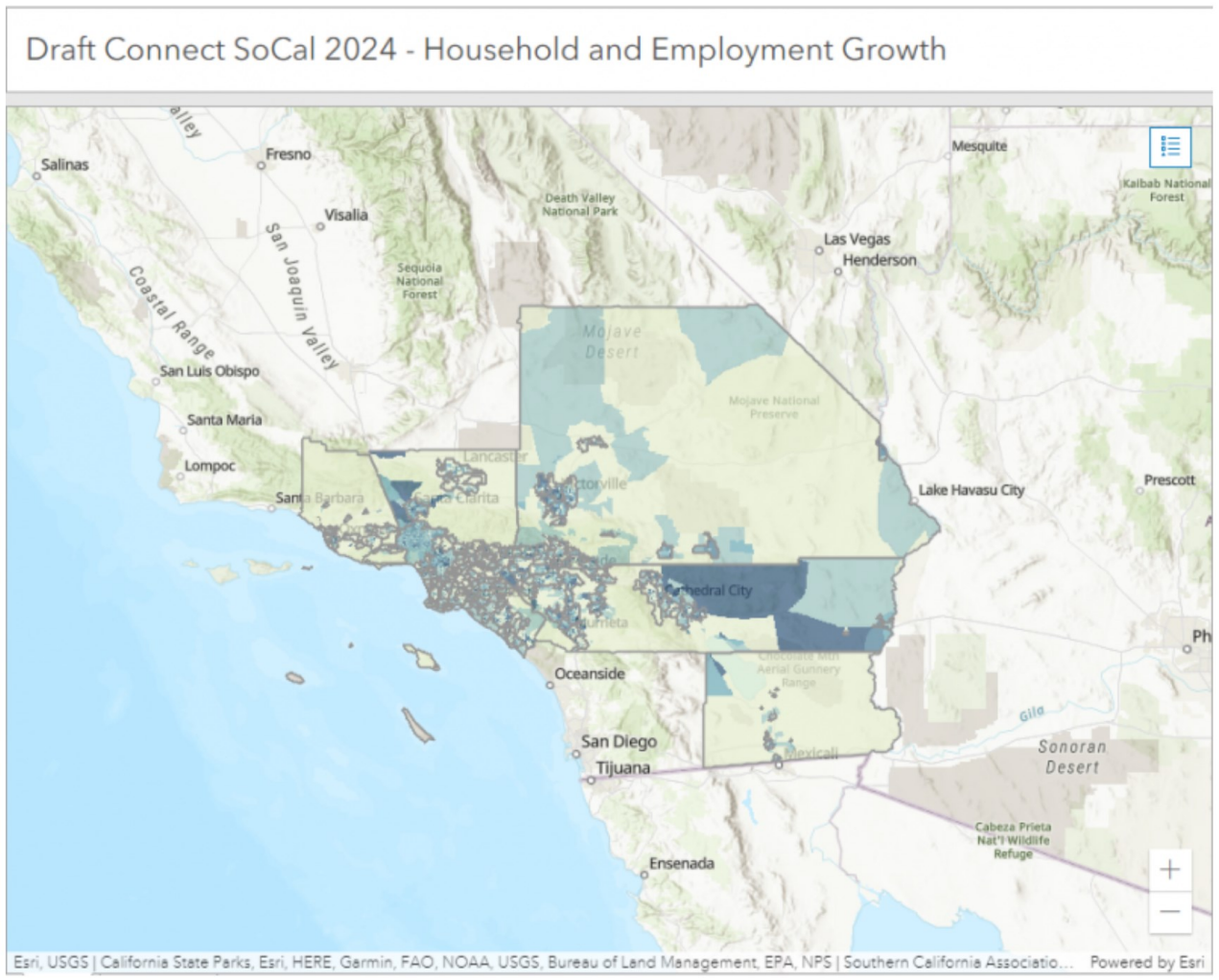
2. GROWTH FORECASTING OVERVIEW

The regional growth forecast necessarily links regional, national, and global-scale demographic and economic trends with projects and developments taking place in the neighborhoods of local jurisdictions across Southern California.

▲ Figure 1. Key Forecast Levels

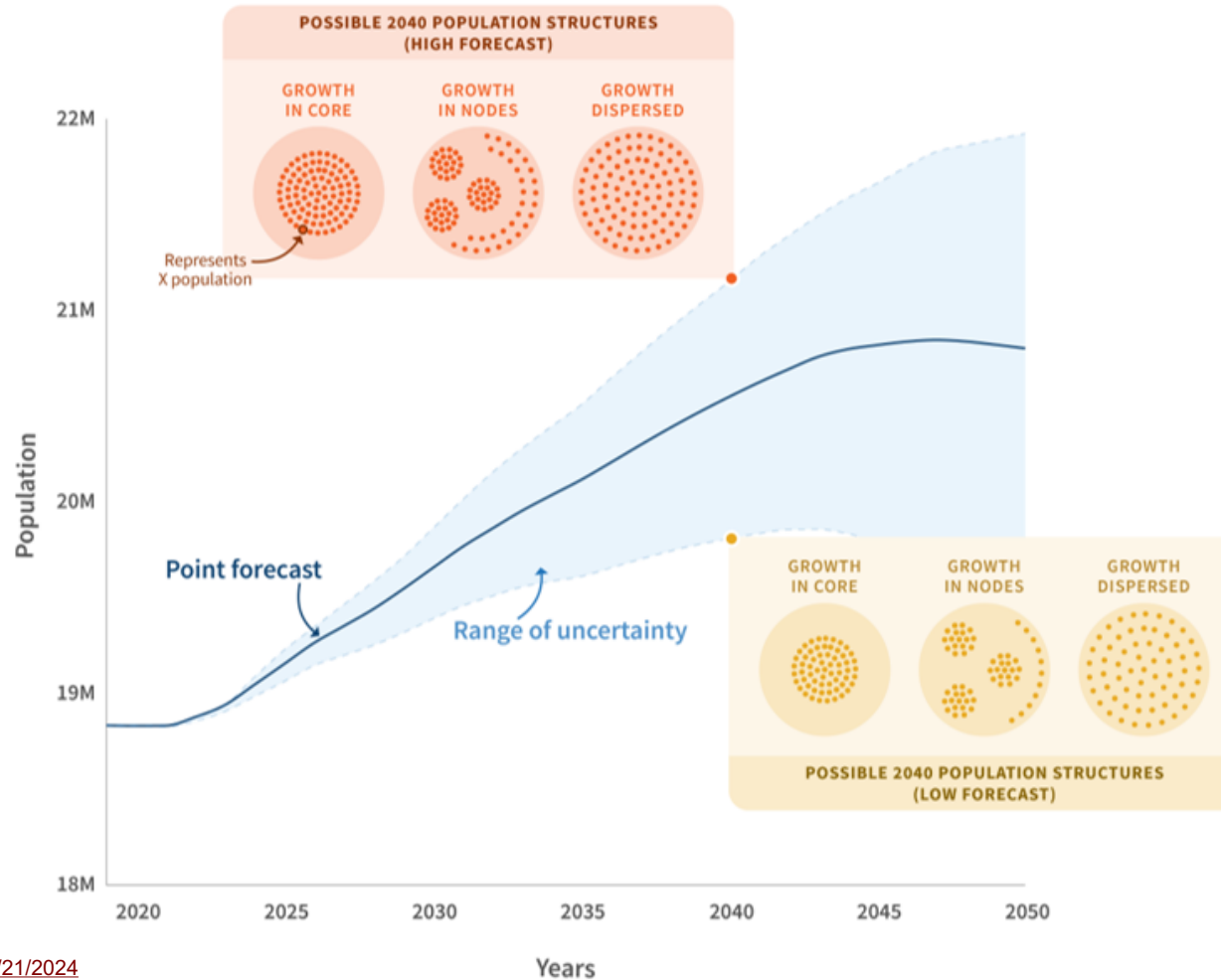


Connect SoCal growth forecasting involves four distinct levels (FIGURE 1). Regional and county population, household, and employment forecast totals are used as controls for the smaller areas – meaning that jurisdiction and Transportation Analysis Zone (TAZ-level) projections will sum up to the county and regional levels.



Demographics & Growth Forecast Technical Report

Figure 2: Subregional forecasts include uncertainties over both time and space.




Demographics & Growth Forecast Technical Report, Section 5.5 (Draft)

- Key points include:
 - **“TAZ-level household and employment growth projection data are a tool to understand how regional policies and strategies may be reflected at the neighborhood level.”**
 - “...they represent a snapshot in time and may not reflect subsequently available information”
 - “... they do not reflect the only set of growth assumptions that will ensure these standards and targets are met... they should not be used to show project inconsistency”
 - “They are advisory and non-binding.”
 - “The forecasted regional development pattern ... is wholly comprised of the policies, goals, and strategies of Connect SoCal”

Growth Forecast – Data Components

- First discussed the use of **households and employment** at November 2021 TWG

In addition, staff are considering whether it may streamline the review process if local jurisdictions were only asked to provide review of household and employment data since it is relatively straightforward to calculate population growth given households. **Staff would like to learn which option TWG members may consider more reasonable from the local review perspective.**

- Preliminary Data/Map Book, February 2022 first indicated that SCAG would solicit **household and employment** data from jurisdictions: 
- Population feedback not precluded:

ANTICIPATED AVAILABILITY	CATEGORY	LAYER NAMES
Feb 2022	Land Use	General plan, zoning, existing land use, specific plan land use, key entitlements
Feb 2022	Priority Development	Neighborhood mobility areas, livable corridors, job centers, housing trajectory
Feb 2022	Transportation	High quality transit areas, transit priority areas, regional bikeways*, regional truck routes*
Feb 2022	Green Region Resource Areas	Flood areas*, coastal inundation, wildfire risk, open space and parks*, endangered species and plans, sensitive habitat areas, natural community and habitat conservation, tribal nations, military installations, farmlands
Feb 2022	Geographical Boundaries	City boundary and sphere of influence, Census tract, TAZ
May 2022	Growth	Jurisdiction and TAZ-level projections of households and employment for 2019-2050

Notes: (1) Please note that population data are not requested as part of the local data exchange process. However, please feel free to provide feedback regarding any major recent or anticipated changes in population, specifically group quarters population (e.g. correctional institutions, nursing homes, dormitories, military barracks). (2) While Government Code 65080(b)(1)(B) et seq. comments on the relationship of the

Table 3: Spatial scales associated with the development of the Forecasted Regional Development Pattern

Spatial Scale	Count	Principal Data Outputs	Review by	Description and purpose
Region	1	<ul style="list-style-type: none"> - Total population, households, and employment - 5-year intervals from 2019-2050 - Demographic detail - Industries by 2-digit NAICS code 	Demographic Panel of Experts	<ul style="list-style-type: none"> - Use demographic and economic data and insights to provide the most accurate possible balanced projection and growth range.
County	6	<ul style="list-style-type: none"> - Total population, households, and employment - 5-year intervals from 2019-2050. 	Demographic Panel of Experts	<ul style="list-style-type: none"> - Same as region, with consideration for economic and demographic differences across counties.
Jurisdiction	197	<ul style="list-style-type: none"> - Total households and total employment - 2019, 2035, and 2050 only 	Jurisdictions, through LDX	<ul style="list-style-type: none"> - Level at which land use policies and strategies are implemented. - Population and intermediate year data derived by SCAG staff for required modeling.
City/Split Tier2 TAZ ("TAZ")	13,062	<ul style="list-style-type: none"> - Total households and total employment - 2019, 2035, and 2050 only 	Jurisdictions, through LDX	<ul style="list-style-type: none"> - Understand and communicate how regional strategies may be reflected in neighborhoods. - Enables modeling which is required to evaluate plan performance. - Advisory and nonbinding.

In addition to employment, population, and households, SCAG develops additional attribute variables such as population by age, household by income and employment by sector. Individual household and population-based data are specifically designed and developed for the ABM. SCAG uses a population synthesizer (PopSyn) to generate individual person-level and household-level characteristics. Detailed information at this scale is derived from the ACS' PUMS microsample data. Detail and a complete list of secondary variables can be found in section 4.5 of the Demographics and Growth Forecast Technical Report. For evaluation purposes, SPM relies on secondary variables

Land Use & Communities Tech Report (Draft & Final)

- *Plan development* relies on 2019, 2035, and 2050 total households and total employment
- Distinguish what is part of the public discussion ("generally illustrate") and respect detailed modeling needs.

Examples of Regional Planning Policies & Implementation Strategies

Please Note:

The SCS (or APS) provides the basis for determining eligibility for streamlining incentives, but full control and discretion in determining a project's consistency with the SCS and whether to utilize streamlining remains with cities and counties as the lead agencies under CEQA.

Regional Planning Policies: These policies provide guidance for integrating land use and transportation planning to realize the vision of Connect SoCal. They offer a resource by which CTCs or local jurisdictions, when seeking resources from state or federal programs, can refer to specific policies to demonstrate alignment with the RTP/SCS.

- RPPs fall under mobility, communities, environment, economy.
- "Communities" are #32 through #47
- SCS consistency language now contains assorted examples and a reference to plan "*Chapter 3 for additional examples*"

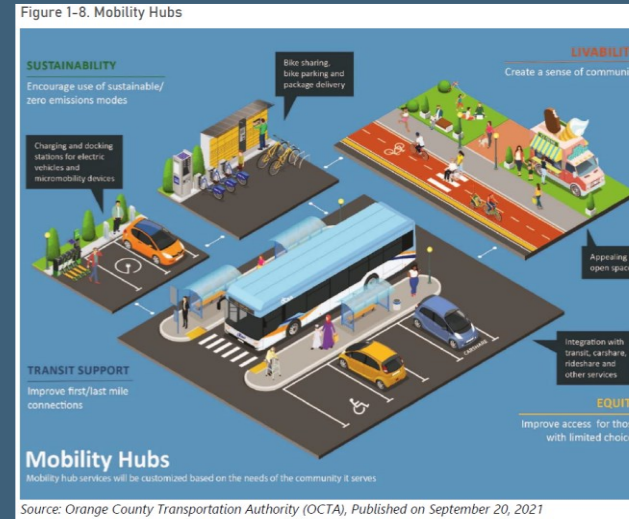
Source: www.scag.ca.gov/streamlining

Sample of Draft Connect SoCal 2024 Policies & Strategies



Broadband Access:

- SCAG Resolution 21-629-2
- Regional Planning Policies #75 through 80
- Permit streamlining efforts, secure grant funding for underserved areas



Mobility Hubs:

- Target investments in a set of prioritized hubs
- Regional Planning Policies #7 through 11
- Support transit/rail agencies, jurisdictions, CTCs



TDM Strategies:

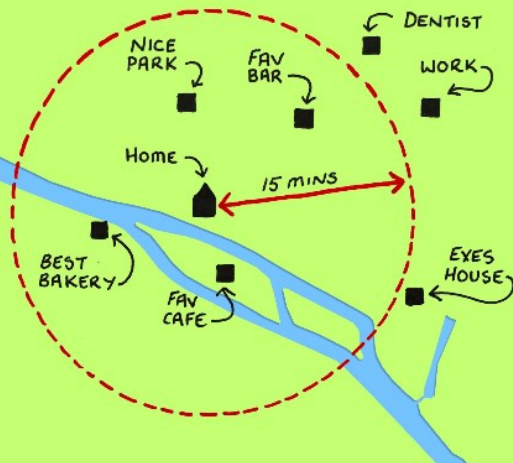
- \$16.9B allocated through 2050.
- Regional Planning Policies #14 through 16.
- SCAG to partner with local jurisdictions, CTCs, TMAs/TMOs



Safe Routes to School:

- Multiple Sustainable Communities Program (SCP) grants approved
- Focus investment on high-injury network; near K-12
- Partnership role

THE IDEAL 15min ZONE



15-minute communities:

- Regional Planning Policies #42 through 44
- Direct technical assistance and collaboration on funding programs.



THANK YOU!

For more information, please visit:

Kevin Kane, PhD

Supervisor, Demographics and Growth Vision Program

kane@scag.ca.gov



HELPR 3.0 Updates + Survey

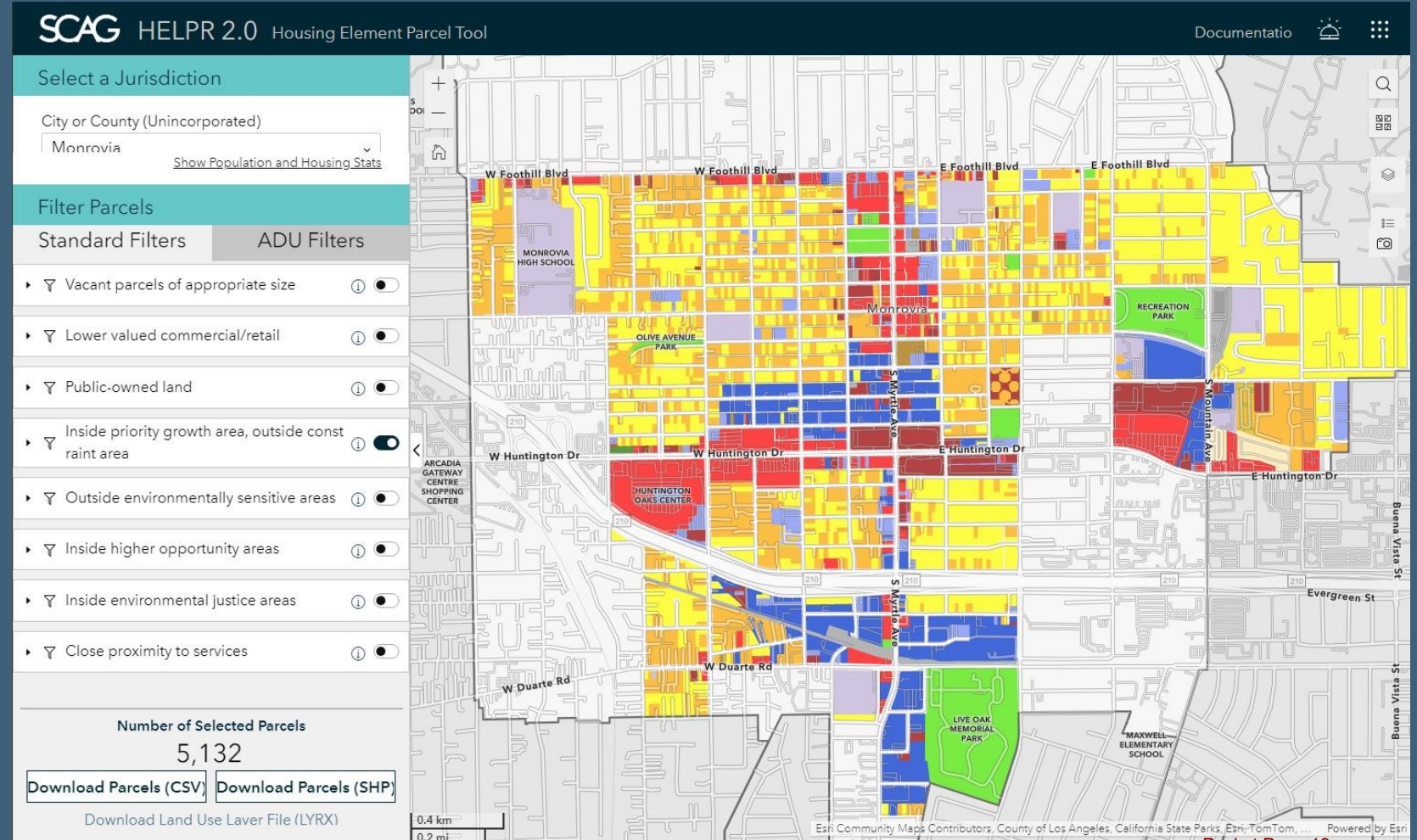
March 21, 2024

Lyle Janicek, AICP
Senior Regional Planner

WWW.SCAG.CA.GOV

HELPR 2.0

- Assists with understanding:
 - Local land use
 - Site opportunities
 - Site constraints
- Based on parcel-level land use data and other SCAG data



Select a Jurisdiction

City or County (Unincorporated)

- All -

Filter Parcels

Standard Filters

ADU Filters

Vacant parcels of appropriate size

Lower valued commercial/retail

Public-owned land

Inside priority growth area, outside constraint area

Outside environmentally sensitive areas

Inside higher opportunity areas

Number of Selected Parcels

5,131,098

Download Parcels (CSV)

Download Parcels (SHP)

Download Land Use Layer File (LYRX)

SCAG Technical Working Group 3/21/2024



California State Parks, Esri, TomTom, Garmin, FAO, NOAA, USGS, EPA, ... Powered by Esri

Packet Page 20

HELPR 3.0

- Updates:
 - Filter updates to better meet the needs of stakeholders
 - Replacing the underlying data with CS24 data
 - Annual Land Use dataset that feeds into the filter
 - Layer overlays
 - TPAs
 - NMAs
 - HQTC
 - Spheres of Influence
 - Livable Corridors
 - Green Region Resource Areas
 - Priority Equity Communities

HELPR 3.0 Survey

- This survey will close on April 30th, 2024. And can be accessed using the QR code or the link below. The link will be distributed with the follow-up email to the TWG meeting.
- <https://bit.ly/HELPR3>





THANK YOU!

For more information, please visit:

<https://scag.ca.gov/connect-socal>

Lyle Janicek, AICP
Senior Regional Planner
Janicek@scag.ca.gov
(213) 236-1966