

# SCAG Local Data Exchange Process and Regional Data Platform Introduction

Tom Vo, Sarah Dominguez, Kevin Kane, Jung Seo, Javier Aguilar,  
Caitlin Smith, Witt Mathot, Maddie Haynes

Planning Division | March 15, 2022

[www.scag.ca.gov](http://www.scag.ca.gov)



**Toolbox Tuesday**



# Housekeeping



1. Meeting length: 1.5 hour
2. This meeting is being recorded
3. All participant lines will be muted
4. At the end, there will be a Q&A session
5. If you have a question during the presentation, please type it into the chat box or press the "raise hand" function.
6. We will log all questions and then voice a selection at the end of the presentation
7. A recording of this webinar and the PowerPoint slides will be available on the SCAG website. We will send a link to everyone who has registered after the event.

# Overview



1. Local Info Services Team
2. Connect SoCal 2024
3. Local Data Exchange
4. Data/Map Books
5. Regional Data Platform
6. RDP – LDX System Demo
7. Next steps

# Local Information Services Team (LIST) Introduction



- Purpose – Coordinate, plan, and develop a system to
  - (1) link SCAG’s value-added products (e.g., data, applications, etc.) to help address local information needs,
  - (2) deliver technical assistance, and
  - (3) provide local staff an opportunity to offer feedback on how SCAG can improve our products to facilitate better collaboration, regionally and locally
- LIST is focusing on the LDX system and process to solicit inputs from local jurisdictions
- Request technical assistance at [list@scag.ca.gov](mailto:list@scag.ca.gov) or submit a request on the RDP Regional Hub at <https://hub.scag.ca.gov/>



# What is Connect SoCal?

## Regional Transportation Plan/ Sustainable Communities Strategy

- Updated Every Four Years
- Long-Term Vision & Investment Framework
- Integrated Regional Development Pattern & Transportation Network
- Reduce GHG Emission to Meet Targets for Passenger Vehicles
- Revenues = Costs
- Meets Regional Emission Standards
- Public Involvement

# Connect SoCal 2020



## CORE VISION



COMPLETE STREETS  
INVESTMENT



DEMAND & SYSTEM  
MANAGEMENT



GOODS  
MOVEMENT



SUSTAINABLE  
DEVELOPMENT



SYSTEM PRESERVATION  
& RESILIENCE



TRANSIT  
BACKBONE

## KEY CONNECTIONS



SHARED MOBILITY &  
MOBILITY AS A SERVICE



SMART CITIES &  
JOB CENTERS



ACCELERATED  
ELECTRIFICATION



GO ZONES



HOUSING SUPPORTIVE  
INFRASTRUCTURE

# Connect SoCal 2024: Development Update



## COMPLETED

- ✓ Regional & County Forecast
- ✓ Relunched Working Groups
- ✓ Regional Data Platform Launch



## LOCAL DATA EXCHANGE (LDX)

- Soft Launch – February 23<sup>rd</sup>
- Complete Launch – May 4<sup>th</sup>
- Input Deadline – December 2<sup>nd</sup>

# Local Data Exchange (LDX)



- Main objective: Present and review roughly 30 data layers related to RTP/SCS development in their local context:
  - Available in Data/Map Books and through RDP
  - Soliciting local update and corrections on core land use layers (available Feb.) and preliminary household and employment totals (“SED”) for 2019, 2035, and 2050 (available May)
  - Feedback and editing opportunity on certain regional growth & transportation data
  - Third-party data related to regional growth objectives included for reference
- Also...
  - The only time during the 4-year cycle where SCAG “visits” every jurisdiction
  - Chance to share regional priorities and tools (e.g., Regional Data Platform)
  - Chance to discuss local concerns and visions for the future
    - → *Chance to align local and regional visions*



# Connect SoCal 2020 Process



# LDX Timeline



EVENT	ANTICIPATED DATE
Local Data Exchange - Soft Launch. Data/Map book Local Data Exchange Soft Launch. Data layers (except growth) available for local review through Data/Map Books and Regional Data Platform.	February 23, 2022
Subregional outreach and trainings on LDX and RDP. LIST team available for questions and consultation.	Feb - Apr 2022
Local Data Exchange Complete Launch. Data/Map Book and RDP updated to include preliminary growth data.	Estimated May 4, 2022
One-on-one meetings with local jurisdictions to review the data package and feedback opportunity.	Beginning May 2022
Deadline for local jurisdictions to provide feedback for possible inclusion in Connect SoCal 2024.	Dec 2, 2022
Regional collaboration on plan development. Continued development of Connect SoCal 2024 strategies with stakeholders, working groups, and the general public.	Early 2023
Draft Connect SoCal 2024 release	Fall 2023
Final Connect SoCal 2024 adoption	April 2024

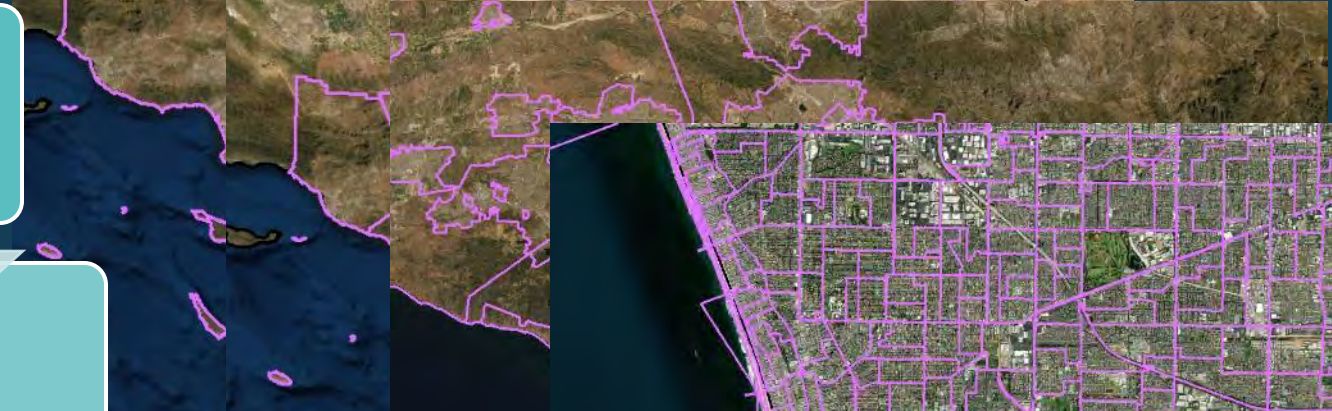


# Connect SoCal 2024 – Projecting growth at four key scales

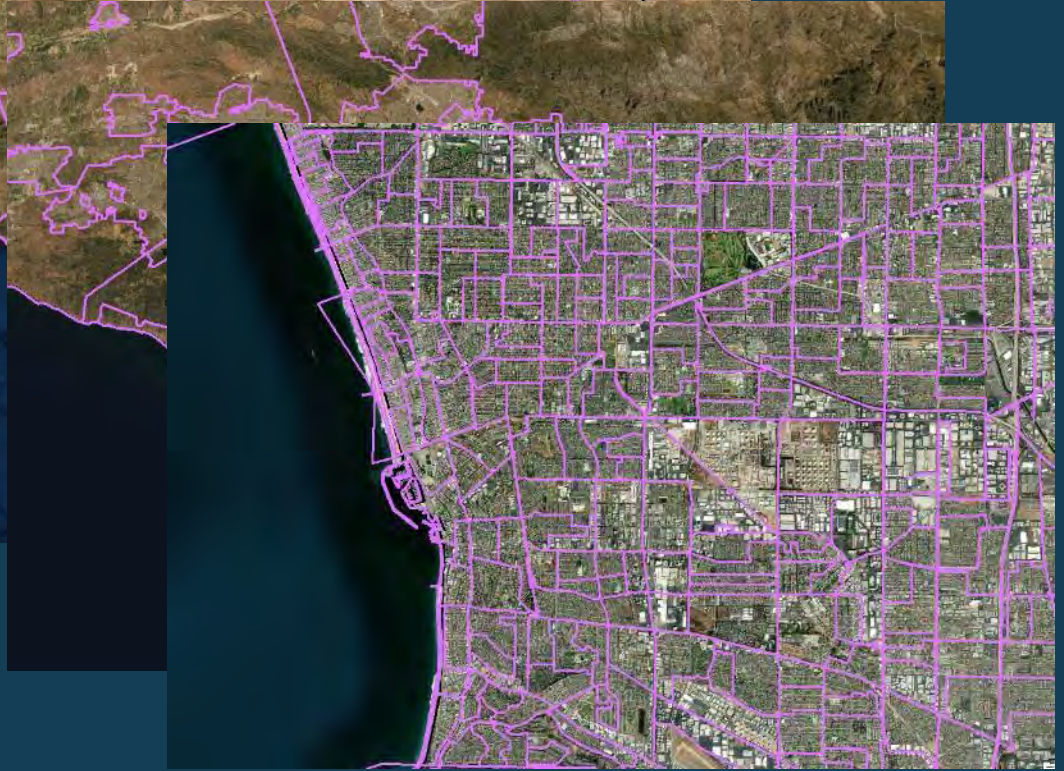
**SCAG Region**  
(19 million people, 38,000 square miles)



**6 SCAG Counties**  
(187,000 to 10.1 million people; 800 to 20,100 square miles)



**197 SCAG Jurisdictions**  
(1,100 to 3.9 million people; 0.6 to 19,200 square miles)



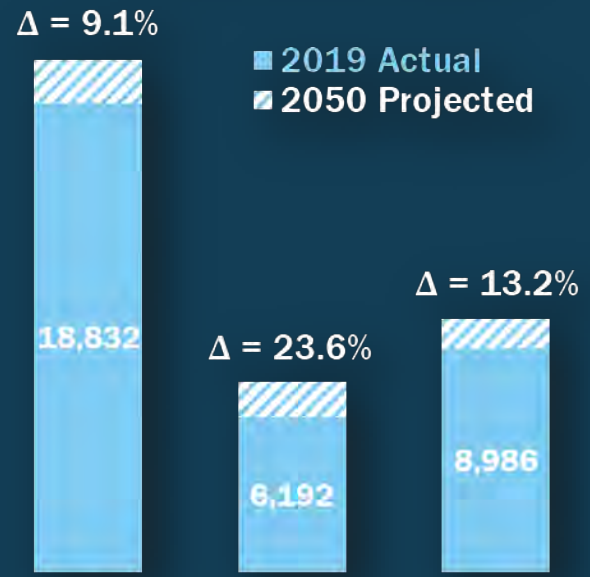
**Transporation Analysis Zone (TAZ)-level growth**  
(Median: 1,200 people, 0.22 square miles)

Source: Connect SoCal 2020; data reflects 2016 base year conditions. Area includes non-urbanized land.

# Objective of LDX: *Forecasted Regional Development Pattern*

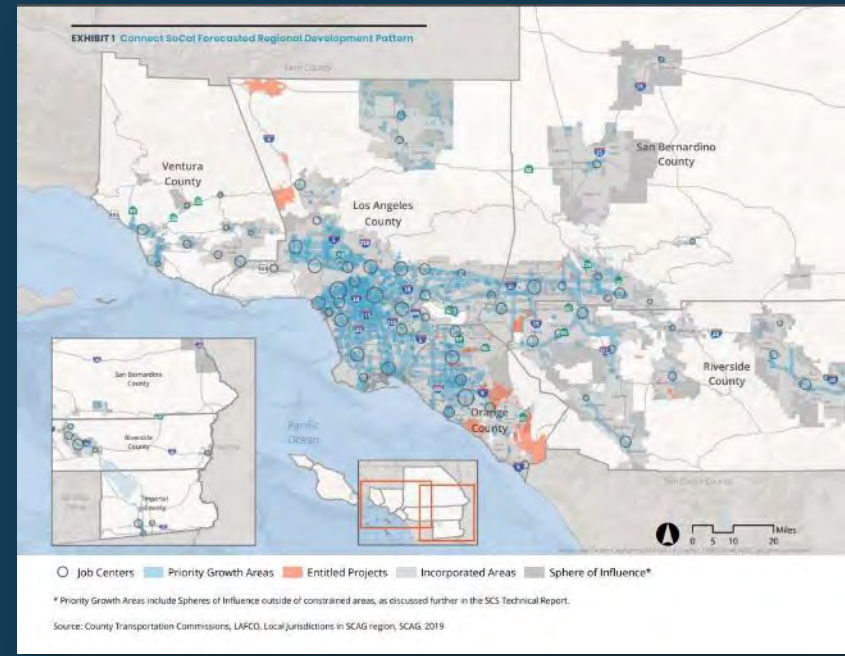
“set forth a *forecasted development pattern for the region*, which, when integrated with the transportation network, and other transportation measures and policies, will reduce the greenhouse gas emissions from automobiles and light trucks to achieve, if there is a feasible way to do so, the *greenhouse gas emission reduction targets* approved by the state board, and (viii) allow the regional transportation plan to comply with Section 176 of the *federal Clean Air Act* (42 U.S.C. Sec. 7506).” California Government Code 65080(b)(vii)

## 2050 Preliminary Projections (1,000s), SCAG Region



Population Households Employment

Source: Connect SoCal 2024 Preliminary Forecast



Source: Connect SoCal 2020 Forecasted Regional Development Pattern

**LDX GETS HERE BY BEING:**

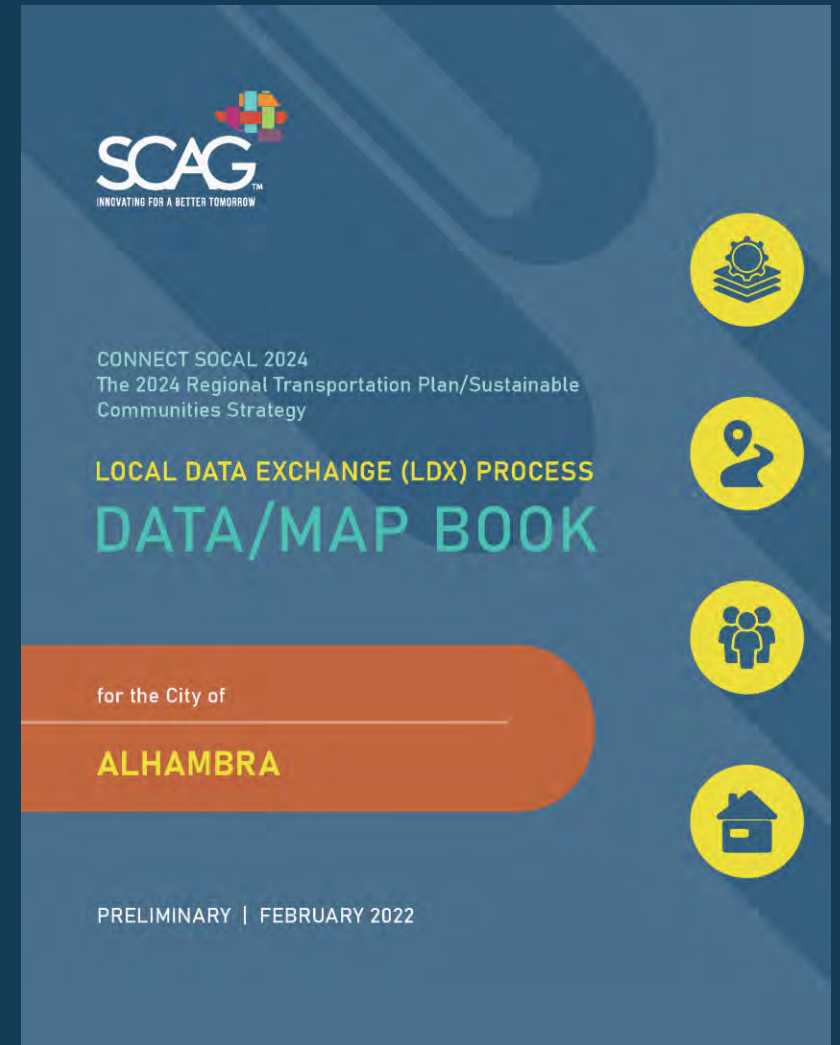
- ✓ Rooted in local planning
- ✓ Steered by a regional vision
- ✓ Aligned with state and federal policy



# SCAG Data/Map Book Introduction



- Support for Connect SoCal 2024 LDX Process
  - 197 Data/Map Books including data descriptions and maps of the base geospatial data
  - Including land use, priority development, transportation, resource areas, geographic boundaries, etc.
  - To share base GIS dataset with local jurisdictions and to solicit feedback during the LDX process
- Data/Map Book Productions
  - Preliminary Data/Map Books (February 2022)
  - Draft Data/Map Books (May 2022): Including SED information and individual Green Region Resource Areas (GRRRA) layers
  - Final Data/Map Books (Early 2023): Incorporating local feedback submitted during the LDX process



# SCAG Data/Map Book Contents (Connect SoCal 2024)



CATEGORY	LAYER NAME	REVIEW TYPE
Land Use	General Plan	Update/Corrections
	Zoning	Update/Corrections
	Existing Land Use	Update/Corrections
	Specific Plan Land Use	Update/Corrections
	Key Entitlements	Update/Corrections
Priority Development	Neighborhood Mobility Areas	Optional
	Livable Corridors	Optional
	Job Centers	Optional
	Housing Trajectory	Update/Corrections and site inventory upload
Transportation	High Quality Transit Areas	Reference Only
	Transit Priority Areas	Reference Only
	Regional Bikeways	Optional
	Regional Truck Routes	Optional

CATEGORY	LAYER NAME	REVIEW TYPE
Green Region Resource Areas (SB 375)	Resilience (Flood areas, coastal inundation, wildfire risk)	Reference Only
	Open Space/Habitat (Open space and parks, endangered species and plants, sensitive habitat areas, natural community and habitat conservation plans)	Reference Only
	Administrative/Working Lands (Tribal nations, military installations, farmlands)	Reference Only
Geographical Boundaries	City Boundary and Sphere of Influence	Reference Only
	Census Tract	Reference Only
	TAZ (Tier2)	Reference Only
Growth	Jurisdiction-level projections of households and employment (2019-2050)	Update/Corrections
	TAZ-level projections of households and employment (2019-2050)	Update/Corrections

*Notes: The live/digital version of the above data contents will be also available on RDP Local Data Exchange Web during the Local Data Exchange soft launch.*



# SCAG Data/Map Book Sample (Local Data Exchange Page)



CONNECT SOCIAL 2024  
The 2024 Regional Transp  
Communities Strategy

LOCAL DATA EXCHA  
DATA/M

for the City of  
**ALHAMBRA**

PRELIMINARY | FEBRUA

### INTRODUCTION

What is the Local Data Exchange? It is a platform that allows local jurisdictions to share and access data from SCAG's regional databases. This data is used for planning, policy-making, and decision-making at the local level. The Local Data Exchange is a key component of SCAG's 2024 Regional Communities Strategy.

### PROVIDING INPUT TO SCAG

This Data/Map Book provides a comprehensive overview of the data and maps available for Alhambra. It includes a table of contents, a list of GIS maps, and detailed descriptions of each map. The maps are organized into categories such as Land Use, Zoning, and Transportation.

DATE	AVAILABLE	CATEGORY	LAYER
Feb 2022	Land Use	General Plan	General Plan
Feb 2022	Priorty Development	High Quality Transit	High Quality Transit
Feb 2022	Transportation	Transit	Transit
Feb 2022	City Boundaries	City	City
Feb 2022	Geographical	Geography	Geography
May 2022	Growth	Growth	Growth

### THE LIST OF GIS MAPS INCLUDES:

- General Plan Land Use with Local Gen
- General Plan Land Use with SCAG Land
- Zoning Codes with Local Zoning Code
- Zoning Codes with SCAG Land Use Code
- Specific Plan Land Use with SCAG Land Use
- Existing Land Use with SCAG Land Use
- High Quality Transit Areas (HQTAs)
- Transit Priority Areas (TPAs)
- Regional Transit
- Regional Truck Routes
- Green Region Resource Areas: Resilience
- Green Region Resource Areas: Open Sp
- Green Region Resource Areas: Agricultural
- Jurisdiction Boundary and Sphere of In
- 2020 Census Tract Boundary
- Transportation Analysis Zones (TAZs) Thi

#### Livable Corridors in City of Alhambra

City Boundary

#### Job Centers in City of Alhambra

City Boundary

#### High Quality Transit Areas, Major Transit Stops, and High Quality Transit

City Boundary

#### Transit Priority Areas and Major Transit Stops in City of Alhambra

City Boundary

#### Bikeways in City of Alhambra

City Boundary

#### Truck Routes in City of Alhambra

City Boundary

#### Resilience Multi-Benefit Assets

City Boundary

#### Open Space/Habitat Multi-Benefit Assets

City Boundary

#### Administrative/Working Lands

City Boundary

#### 2019 City Boundary and Sphere

City Boundary

#### 2020 Census Tracts in City of Alhambra

City Boundary

#### Transportation Analysis Zones

City Boundary

MAIN OFFICE  
1500 Whittier Blvd, Ste. 100  
Alhambra, CA 91801  
Tel: (626) 244-8800

REGIONAL OFFICES  
SANTA ANA COUNTY  
200 North Imperial Ave., Ste. 104  
Fullerton, CA 92632  
Tel: (714) 244-9000

ORANGE COUNTY  
440 South Main St., Ste. 141  
Orange, CA 92668  
Tel: (714) 219-3997

RIVERSIDE COUNTY  
1000 W. Ave. 105  
Riverside, CA 92507  
Tel: (951) 514-3111

SAN BERNARDINO COUNTY  
1000 W. Ave. 105  
Riverside, CA 92507  
Tel: (951) 514-3111

VENTURA COUNTY  
1000 W. Ave. 105  
Riverside, CA 92507  
Tel: (951) 514-3111



# Regional Data Platform (RDP) Goals



1. Provide access to data, modern tools, and best practices that support stronger planning and information-based decision making at all levels
2. Streamline the exchange of data with jurisdictions and partners across the region while establishing procedures and standards for geospatial data consistency
3. Establish a community of planners, GIS professionals, and practitioners to foster collaboration and collective learning, as well as guide the long-term growth and evolution of the RDP

Supporting *regionally aware* local planning  
And *locally informed* regional planning

*For a more cohesive and sustainable region...*



## LAUNCH



# The RDP Delivers Powerful Data and Tools



...Supporting Planning and Data Sharing Workflows Across Jurisdictions

## Accessible Data and Information

Regional Hub

SoCal Atlas

Explore

SCAG Regional Data Platform (RDP)

## Planning & Engagement Tools

HELPR

Parcel Explorer

General Plan Update Initiative Templates

## Data Sharing Tools & Workflows

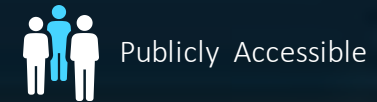
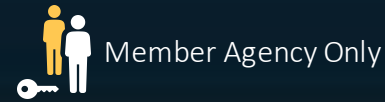
Local Input Editor

Local Data Exchange



Empowering planners and residents. . .  
... To create more sustainable communities

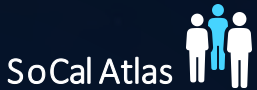
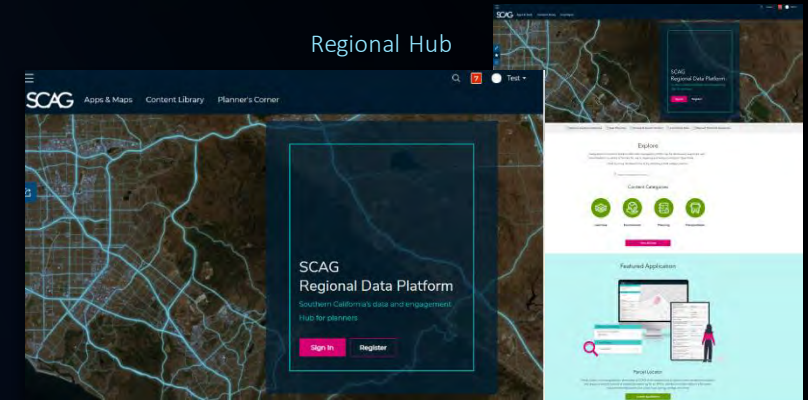
# Data & Information Tools



## Regional Hub

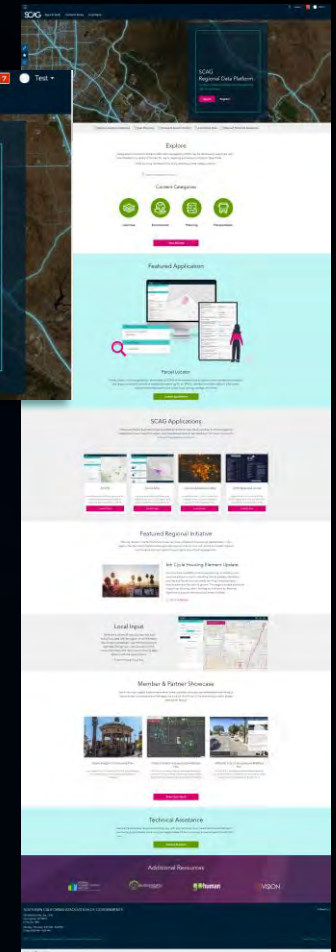
Provides one-stop access to data, tools, and information as well as a platform for two-way engagement. Features and capabilities include:

- Rich content catalogue with data, maps, apps, policy resources, and more
- “Planner’s Corner” full of planning-specific resources
- Public and private access
- Collaboration workspace for regional programs and initiatives (*coming soon*)
- Ability to request one-on-one technical assistance from SCAG



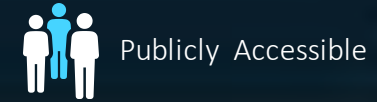
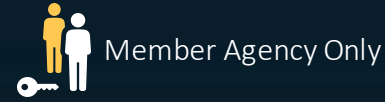
## SoCal Atlas

A web-based experience allowing member agencies, other regional stakeholders, and the general public to explore data, statistics, and maps across topics and geographies.

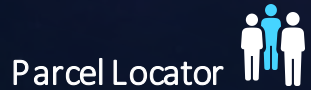




# Planning & Engagement Tools



**HELPR**  
Provides the ability to evaluate which parcels within a jurisdiction may have potential for residential development based on parcel attribute information and recommended filters.



**Parcel Locator**  
A self-service resource for planners, residents, or other stakeholders (such as developers) to find and discover rich information about specific parcels.

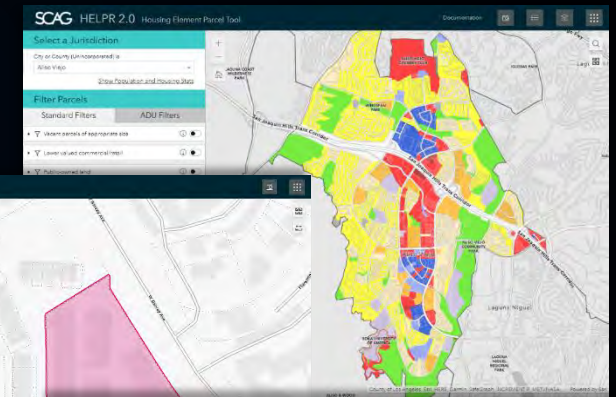


**Local General Plan Update Site (template)**  
A ready-to-use template for web-based General Plans for use by Member Agencies to communicate and engage with residents around their General Plan update.

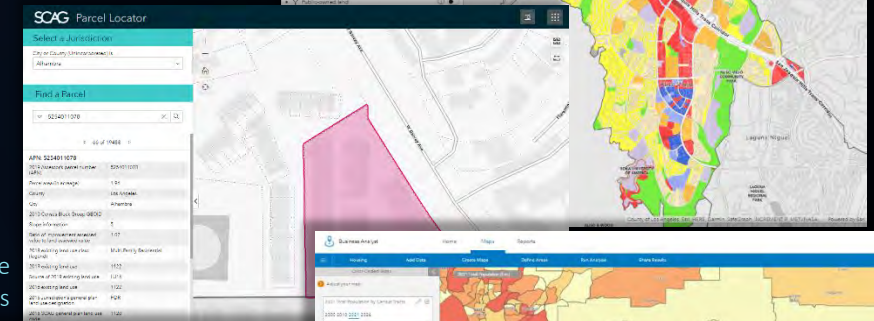


**Off-the-Shelf Planning & Engagement Tools**  
Esri products, provided to member agencies, along with resources, templates, and best practices to support a broad range of common planning and resident engagement workflows. This includes Business Analyst Web, ArcGIS Urban, and ArcGIS Pro

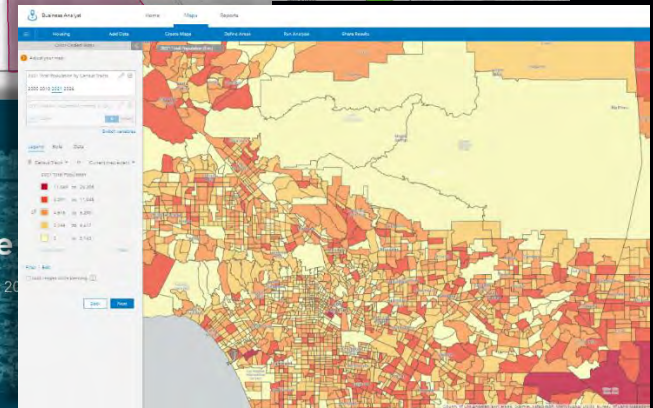
HELPR



Parcel Locator



Local GP Update Site Templates



What is a General Plan?

The General Plan is a policy document approved by the City Council that guides future development within the City. The new 2035 General Plan is organized around elements (or themes), which include Policies and Actions within each element to guide future development. The eight elements in the 2035 General Plan are Housing, Land Use, Mobility, Noise, Safety, Parks and Recreation, Natural Resources, and Climate Change.

Business Analyst Web

# Local Data Exchange (LDX) Tools



Member Agency Only



Publicly Accessible



## LDX Website

A central location for member agencies and other stakeholders to access data sharing tools and related Local Data Exchange resources, view information and statistics on the state of data in the region and request technical assistance from SCAG.

## Data Editor

A web-based application for jurisdictions and other key stakeholders to explore, review, and update/comment on data shared with SCAG through the Local Data Exchange process for their jurisdiction.

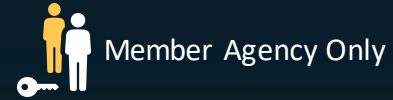
## Data Sharing

Additional mechanisms for member agencies to provide data to SCAG as part of the Local Data Exchange process, including GIS data file upload and sharing an approved plan in ArcGIS Urban.

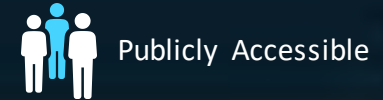
## Data Reviewer

A workflow allowing member agencies to review and approve edits to data within their jurisdiction before edits are sent to SCAG and incorporated to the regional layers

# RDP Tools Summary



Member Agency Only



Publicly Accessible



RDP Tools and Capabilities	URL	Accessible to
Regional Hub	<a href="https://hub.scag.ca.gov/">https://hub.scag.ca.gov/</a>	
SoCal Atlas	<a href="https://rdp.scag.ca.gov/socal-atlas/">https://rdp.scag.ca.gov/socal-atlas/</a>	
Housing Element Parcel (HELPR) Tool 2.0	<a href="https://rdp.scag.ca.gov/helpr/">https://rdp.scag.ca.gov/helpr/</a>	
Parcel Locator	<a href="https://rdp.scag.ca.gov/parcel-locator/">https://rdp.scag.ca.gov/parcel-locator/</a>	
Local General Plan Update Site Templates	<a href="https://hub.scag.ca.gov/pages/planners-corner">https://hub.scag.ca.gov/pages/planners-corner</a>	
Off-the-Shelf Planning & Engagement Tools	<a href="https://hub.scag.ca.gov/pages/planners-corner">https://hub.scag.ca.gov/pages/planners-corner</a>	
LDX Website	<a href="https://hub.scag.ca.gov/pages/ldx">https://hub.scag.ca.gov/pages/ldx</a>	



# RDP – LDX System Demo



The pages are the primary entry point for data sharing between local jurisdictions and the region. Here, you can learn about the state of data in your jurisdiction, and take action to update and collaborate with the region to ensure that the best possible data is used in planning work at all levels of government.

### Current Status

Your contributions to regional data teams is critical to advancing the region through data-driven analysis and decision-making. The charts below present a current status of ongoing data contribution, sharing, and collaboration throughout the region.

Land Use Data Last Updated:	Bike Routes Last Updated:	Census Tracts Last Updated:
6/30/2021	8/31/2021	7/6/2021

### Providing Local Input

There are a variety of ways you can add and share local data with the region to contribute to regional datasets. Use the instructions below to learn through your web browser how to provide information and resources on sharing data directly with the region below.

[Learn More](#)

### Share Data

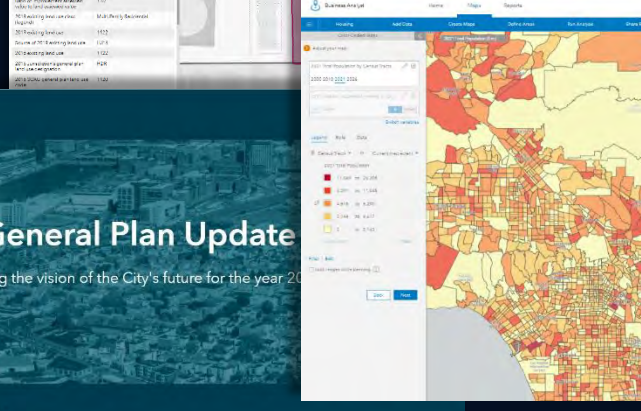
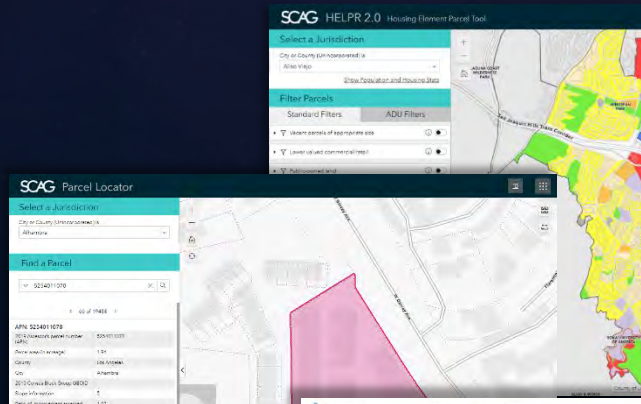
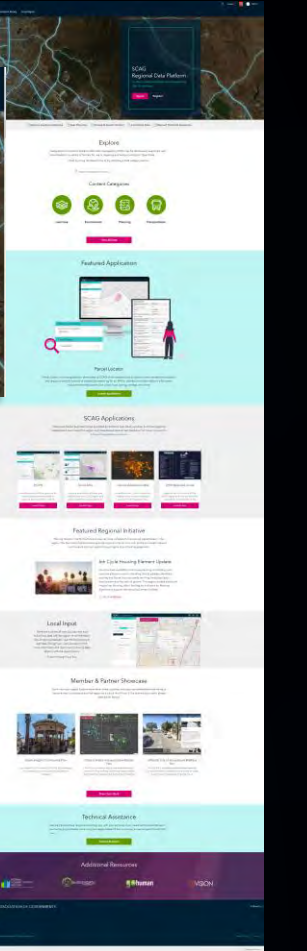
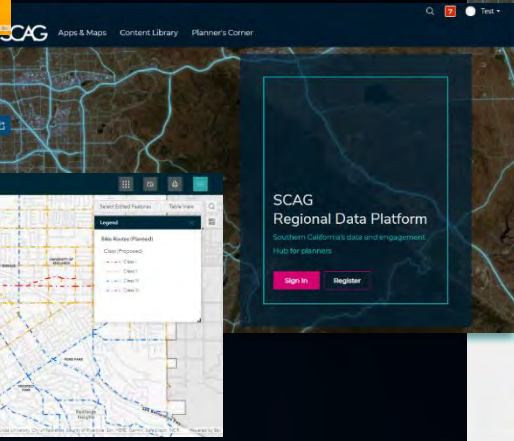
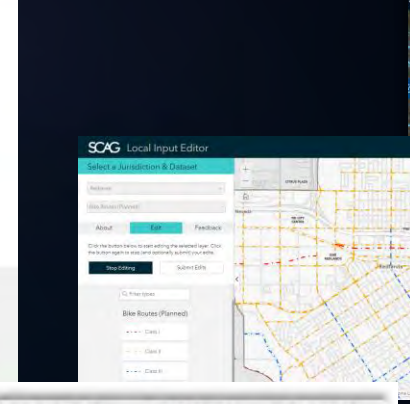
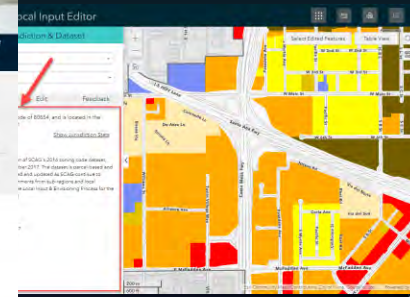
Share your data with the region in a way that makes the most sense for you. Explore the different data sharing methods below, or click here to learn more about our data sharing options.

- [Upload Data as a File](#)  
Upload data as a file or spreadsheet.
- [Share an Approved Plan](#)  
Share your approved land use plan with the region.

### Technical Assistance

We will help you with any technical questions you have. If you need technical assistance or are having any problems with loading or submitting your data, please contact our technical support team.

[Submit Request](#)



## General Plan Update

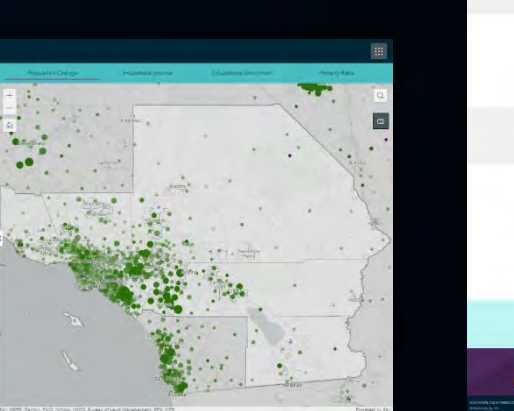
Guiding the vision of the City's future for the year 2040

### What is a General Plan?

The General Plan is a policy document approved by the City Council to guide future development within the City. The new 2035 General Plan is organized around elements for General, which include Policies and Actions within each element to guide future development. The eight elements in the 2035 General Plan are: Housing, Land Use, Mobility, Noise, Safety, Parks and Recreation, Natural Resources, and Climate Change.



- Housing**  
Learn more about housing including housing policy and how the SCAG region is working to address housing.
- Employment**  
Learn more about employment in your City or County including industry information, business and workforce.
- COVID-19 & Action**  
Learn more about the impact of COVID-19 on the region and how we are working to address it.



# What's next?



## LOCAL JURISDICTION

- Request ArcGIS licenses at <https://hub.scag.ca.gov/pages/planners-corner>
- Request LDX System access at <https://hub.scag.ca.gov/pages/ldx>
- SCAG LIST will start contacting cities in late March for technical assistance
- Visit the LDX and RDP table at SCAG General Assembly (May 5-6)
- One-on-one meeting with SCAG between May and September to discuss LDX
- Submit all feedback by December 2<sup>nd</sup>

## GENERAL PUBLIC

- Access publicly available data, tools, and training at <https://hub.scag.ca.gov/>
- Content Library
  - Apps and Maps
  - Training Resources



# Acronyms



- LIST – Local Information Services Team
- LDX – Local Data Exchange
- Connect SoCal – Regional Transportation Plan/Sustainable Communities Strategy
- PEIR – Program Environmental Impact Report
- RDP – Regional Data Platform
- HELPR – Housing Element Parcel Tool
- SED – Socioeconomic Dataset
- TAZ – Transportation Analysis Zone
- HQTA – High Quality Transit Area
- TPA – Transit Priority Area
- NMA – Neighborhood Mobility Area

Thank You!  
[list@scag.ca.gov](mailto:list@scag.ca.gov)

Tell us how we did!

Take a quick 2-minute survey to help us  
improve future Toolbox Tuesdays!

