



Southern California Association of Governments  
Hybrid (In-Person and Remote Participation)  
900 Wilshire Boulevard, Suite 1700 – Regional Council Room  
Los Angeles, CA 90017  
June 2, 2022

**To:** Community Economic & Human Development Committee (CEHD)  
Energy & Environment Committee (EEC)  
Transportation Committee (TC)  
Regional Council (RC)  
**From:** Kevin Kane, Program Manager I  
(213) 236-1828, kane@scag.ca.gov  
**Subject:** Connect SoCal 2024 Local Data Exchange Launch

EXECUTIVE DIRECTOR'S  
APPROVAL

**RECOMMENDED ACTION FOR CEHD AND EEC:**

Information Only – No Action Required

**RECOMMENDED ACTION FOR TC AND RC:**

Receive and File

**STRATEGIC PLAN:**

This item supports the following Strategic Plan Goal 1: Produce innovative solutions that improve the quality of life for Southern Californians. 3: Be the foremost data information hub for the region. 4: Provide innovative information and value-added services to enhance member agencies' planning and operations and promote regional collaboration.

**EXECUTIVE SUMMARY:**

*On May 23, 2022, SCAG released important pieces of data for local jurisdiction review during Connect SoCal 2024 development. These include the preliminary growth forecast of households and employment through 2050 for the region at the jurisdiction and Transportation Analysis Zone (TAZ) levels and a concise planning survey. In past cycles, jurisdictions had been asked to review and approve a preliminary forecast which was then modified at a later date based on the plan's objectives. This planning cycle, the Connect SoCal 2020 regional policies – namely the promotion of growth in priority development areas and away from SB 375 resource areas – have been integrated into the forecasted numbers for local review up-front. Over the next six months, as part of the Local Data Exchange (LDX) process, SCAG staff aim to meet one-on-one with local staff to discuss the projections, other data layers, and guide the review process. Feedback from local jurisdictions is due on December 2, 2022.*

*It is important to note that the preliminary growth forecast does not aim to reflect the total development capacity that exists across the region, but instead to capture where the region*

*anticipates and aims to encourage household and employment growth through the transportation plans, policies and investments included in Connect SoCal. The growth forecast is developed at the TAZ-level to assess the impacts and benefits of the regional plan and provides the basis for producing a regional forecasted development pattern that is adopted as part of Connect SoCal, as required by SB 375. Resulting in large part due to Census 2020 and changing demographics, regional household growth is expected to be roughly 10 percent lower than projected in Connect SoCal 2020. Furthermore, projected regionwide growth through 2050 is well below estimated housing unit capacity already included in local general plans.*

**BACKGROUND:**

SCAG relies on input and collaboration from local agencies in developing the RTP/SCS every four years—namely, the transportation projects list that is provided to SCAG by each County Transportation Commission, and local data from each of the 191 cities and 6 counties. Throughout the development of the plan, SCAG engages with stakeholders through working groups, technical advisory committees, and direct engagement. In accordance with Senate Bill (SB) 375, SCAG also solicits feedback from the general public including workshops on the issues and policy choices at hand in the development of the draft SCS. In addition, SCAG brings policy issues and choices as well as emerging trends to the SCAG policy committees for dialog and feedback.

**Preparation, Principles and Process for Developing the Forecasted Regional Development Pattern**

The data layers reviewed during the Local Data Exchange (LDX) process will form the basis for the policies and strategies which will be part of Connect SoCal 2024. Of particular focus, Government Code Section 65080(b)(2)(B) *et seq.* requires that SCAG “set forth a forecasted development pattern for the region, which, when integrated with the transportation network, and other transportation measures and policies, will reduce the greenhouse gas emissions from automobiles and light trucks to achieve, if there is a feasible way to do so, the greenhouse gas emission reduction targets approved by the state board and will allow the regional transportation plan to comply with Section 176 of the federal Clean Air Act (42 U.S.C Sec. 7506).” For the SCAG region, the California Air Resources Board (ARB) has set greenhouse gas reduction targets at eight percent below 2005 per capita emissions levels by 2020, and 19 percent below 2005 per capita emissions levels by 2035.

SCAG staff proposes the following principles in order to work with local jurisdictions during the LDX process to generate a forecasted regional development pattern that achieves these targets:

1. *Rooted in local planning policies.* The forecasted regional development pattern will use local general plans as a starting point and local jurisdictions will be asked to update and review the forecast with their expertise of local planning context and pending/upcoming planning work.

2. *Steered by a regional vision.* The forecasted regional development pattern will integrate growth strategies adopted by the SCAG Regional Council as part of the adoption of Connect SoCal in September 2020 and follow regional and county forecast totals as guided by the Panel of Experts.
3. *Aligned with state and federal policy.* The forecasted regional development pattern will reflect the 6th cycle RHNA and housing element process and be assessed against SCAG's SB 375 greenhouse gas emission reduction targets and federal transportation conformity targets.

SCAG is using the LDX to initiate earlier discussion of the Connect SoCal 2024 forecasted regional development pattern with local jurisdictions. Staff seeks to strengthen the connection of local and regional plans by encouraging local jurisdictions to make data corrections or changes based on local policies during the earlier, data development phase. The objective of this process is to reach the above-referenced statutory targets without needing further modification of the data. As in past cycles staff, in consultation with the Technical Working Group (TWG), will assess the locally-reviewed forecasted regional development pattern given state and federal requirements and report back to policy committees.

### **Preliminary Growth Forecast Methodology**

The preliminary regional and county growth projections were completed earlier this year and shared with the Joint Policy Committee and Regional Council in February. Due to a combination of long-term decreases in births and a near-term decrease in foreign and domestic migration, the region's population growth from 2019-2050 is anticipated to be approximately 50 percent of the amount projected during Connect SoCal 2020's timeframe of 2016-2045. Employment growth is expected to be roughly 70 percent the amount previously projected, and household growth 90 percent—the decrease in the latter being more modest due to smaller household sizes expected in the future in addition to pent-up demand.

Differences in the regional and county projections, which are mainly based on demographic and economic factors and developed in conjunction with a Panel of Experts, will trickle down and impact projections at the jurisdictional and TAZ levels; however, differences compared to the last plan will not be uniform across the region for myriad reasons.

For the last several regional plan cycles, the principal technique for developing jurisdiction and TAZ-level forecasts for households was to use general plan and existing land use data to gauge remaining capacity and to match it with the expected growth across a county<sup>1</sup>. The primary tool for

---

<sup>1</sup> Note that SCAG's regional plans are not considered "build-out" scenarios; the level of growth is constrained by the expert panel-derived regional projections. Generally, for the region and its six counties, capacity far exceeds the level of growth which is reasonably foreseeable based on demographic and economic factors.

developing jurisdiction and TAZ-level employment forecasts is to extrapolate today's jobs by industry in smaller areas by the amount they're expected to grow in the county over the next 30 years (i.e. a shift-share method). This has served as a starting point for local review of household and employment projections; following local review staff have integrated growth strategies in order to assist in reaching the statutory targets.

Connect SoCal 2024 plan development contains some additional challenges and in consultation with Technical Working Group (TWG) staff embarked on a streamlined approach.

First, the 6<sup>th</sup> cycle Regional Housing Needs Allocation (RHNA), housing element update process, and substantial state emphasis and resources geared toward housing production in areas of high need are existing policies whose impacts must be considered when projecting growth. In particular, a jurisdiction's housing element is intended to identify sites or opportunities for rezoning which may change the location and quantity of capacity for new housing, while past trends may no longer be as reliable of a predictor of future growth.

Secondly, Connect SoCal 2020 – and prior regional plans – have relied on some combination of prioritized and de-prioritized areas for development in order to reach statutory targets. Generally, growth is prioritized (but not exclusively) in areas with some combination of transit, walkability, or accessibility in order to reach greenhouse gas targets—types of places increasingly a focus of state policy and funding efforts to accelerate housing production. Conversely, growth is de-prioritized (but not precluded) in areas with natural and agricultural resources or environmental hazards that can increase cost and risk and thus decrease development likelihood.

SCAG has traditionally developed data on such prioritized and de-prioritized development areas; however, this is usually applied to growth projections as a scenario exercise after the lengthy and comprehensive local review process is concluded. **In contrast, the Connect SoCal 2024 preliminary household growth forecast methodology includes the housing element update, priority development areas (PDAs), and SB 375 Green Region/Resource Areas (GRRAs) as factors.** The preliminary employment forecast uses updated data and regional projections; however, the methodology remains the same as in prior cycles.

Four PDAs are used in the preliminary growth forecast methodology, and each location in the region is attributed a value of 0-4 based on the degree of transportation or locational benefit available in that place based on:

- Neighborhood Mobility Areas (NMAs)
- Transit Priority Areas (TPAs)
- Livable Corridors
- Spheres of Influence (in unincorporated areas only)

---

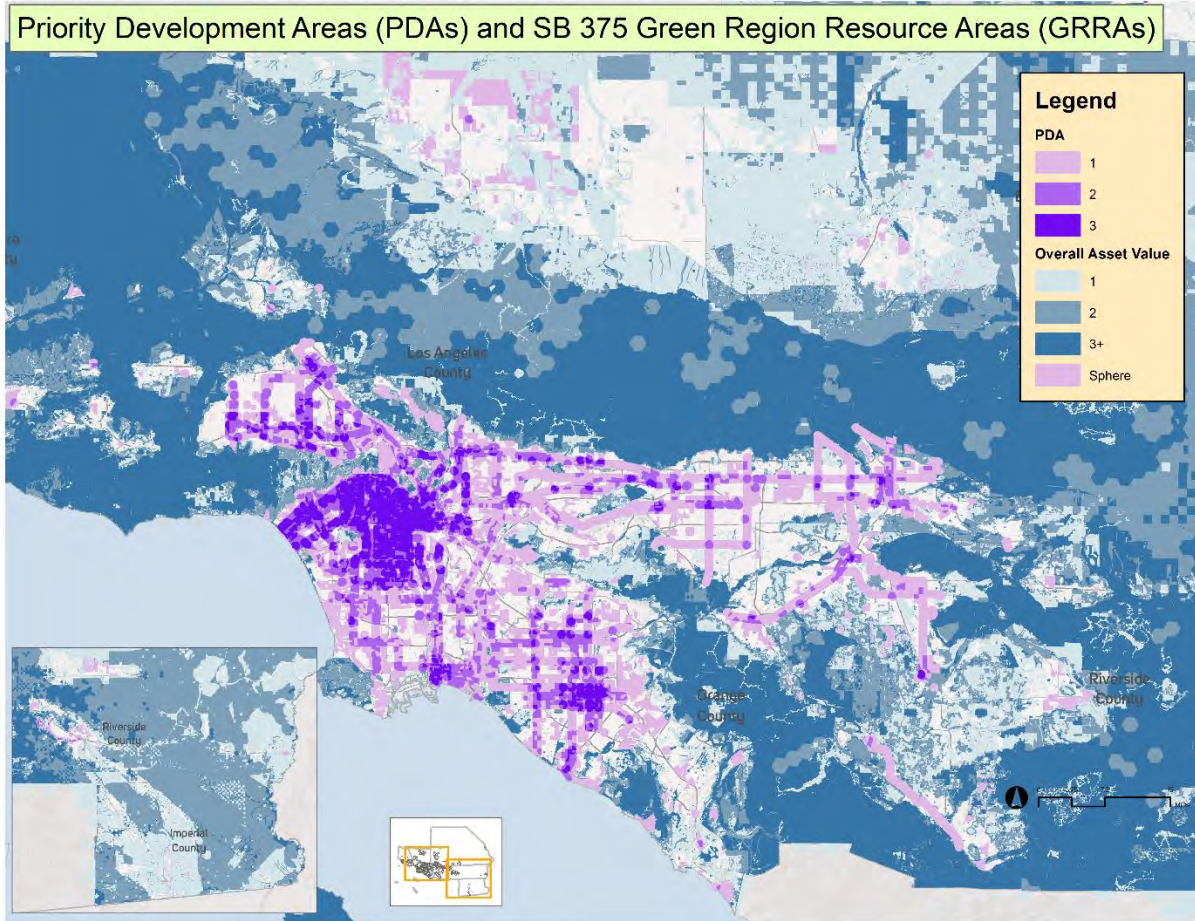
Thirteen layers contribute to GRRAs, which are used in the preliminary growth forecast methodology; Each location in the region is attributed a value of 0-13 based on the degree of environmental sensitivity to natural hazards and climate change risks to development based on:<sup>2</sup>

- 100-year floodplains
- Wildfire risk within high and very high risk areas
- Wildland-urban interface and intermix areas
- 3-ft sea level rise
- Sensitive habitat areas, such as wetlands
- Sensitive habitat areas, such as areas providing habitat connectivity
- Sensitive habitat areas, such as areas of conservation emphasis
- Open Space and Parks, as identified under Save Our Agricultural Resources (Ventura County)
- Open Space and Parks, as identified under the CA Protected Areas Database
- Open Space and Parks, as identified under the CA Conservation Easement Database
- Tribal Nations
- Military Installations
- Farmlands, as identified through the CA Department of Conservation Farmland Mapping & Monitoring Program

---

<sup>2</sup> Note that the GRR layer list is based on the adopted, Connect SoCal 2020 Growth Vision (see [https://scag.ca.gov/sites/main/files/file-attachments/0903fconnectsocial\\_sustainable-communities-strategy.pdf#page=20](https://scag.ca.gov/sites/main/files/file-attachments/0903fconnectsocial_sustainable-communities-strategy.pdf#page=20)) with updates made for newly available data. Detailed GRR and PDA layer descriptions can be found in the Data/Map books available at <https://scag.ca.gov/local-data-exchange>.

---



(Source: SCAG: \*Houses classed 28 and 29 (long term) & Available for use not geographically distinct. \*\*2019 district average population is 245,000.

Connect SoCal 2024 - Preliminary Growth Forecast Assessment

P:\kkane\SCAGRTPSCS24\pda\_grra\_formatted.mxd | Date: 5/10/2022

Then, the preliminary growth forecast methodology prioritizes household growth in **20 steps** based on the number of PDAs and GRRAs, beginning with the lowest step where available capacity—based on general plans, existing land use, and housing elements—is found:

<b>Number of Priority Development Areas</b>	4	3	2	1	0	4	3	2	1	0	4	3	2	1	0	4	3	2	1	0
<b>Number of Green Region Resource Areas</b>	0	0	0	0	0	1	1	1	1	1	2	2	2	2	2	3+	3+	3+	3+	3+
<b>Step #</b>	1	2	3	4	5	6	7	8	9	10	11	12	13	14	15	16	17	18	19	20

**LDX – Local Review Process**

On February 23<sup>rd</sup> the first stage of LDX – referred to as soft launch—made housing element data, PDAs, and GRRAs available to and reviewable by local jurisdictions. On May 23<sup>rd</sup>, SCAG released the preliminary growth forecast data at the jurisdiction and TAZ levels. During LDX, SCAG aims to meet one-on-one with local jurisdictions to discuss the growth projections and other data layers.

LOCAL DATA EXCHANGE (LDX) TIMELINE	DATE
LDX Soft Launch. Non-growth data available for local review.	February 23, 2022
Outreach and trainings. LIST team available for questions and consultation.	Feb – May 2022
LDX Complete Launch including preliminary growth forecast data.	May 23, 2022
One-on-one meetings with local jurisdictions to review the data and review opportunity.	May – October 2022
Deadline for local jurisdictions to provide feedback for possible inclusion in Connect SoCal 2024.	Dec 2, 2022
Continued development of Connect SoCal 2024 strategies with stakeholders, working groups, and the general public.	Early 2023
Draft Connect SoCal 2024 release.	Fall 2023

CATEGORY	LDX DATA LAYER	REVIEW TYPE
Land Use	General Plan	Update/Corrections
	Zoning	Update/Corrections
	Existing Land Use	Update/Corrections
	Specific Plan Land Use	Update/Corrections
	Key Entitlements	Update/Corrections
Priority Development	Neighborhood Mobility Areas	Optional
	Livable Corridors	Optional
	Job Centers	Optional
	Housing Trajectory	Update/Corrections
Transportation	High Quality Transit Areas	Reference Only

	Transit Priority Areas	Reference Only
	Regional Bikeways	Optional
	Regional Truck Routes	Optional
Green Region Resource Areas (SB 375)	Resilience ( <i>Flood areas, coastal inundation, wildfire risk</i> )	Reference Only
	Open Space/Habitat ( <i>Open space and parks, endangered species and plants, sensitive habitat areas, natural community and habitat conservation plans</i> )	Reference Only
	Administrative/Working Lands ( <i>Tribal nations, military installations, farmlands</i> )	Reference Only
Geographical Boundaries	City Boundary and Sphere of Influence	Reference Only
	Census Tract	Reference Only
	TAZ	Reference Only
Growth/SED	Jurisdiction and TAZ-level projections of households and employment (2019, 2035, and 2050)	Update/Corrections
LDX Survey	See <a href="https://www.surveymonkey.com/r/LDX24">https://www.surveymonkey.com/r/LDX24</a>	Planning Survey

It is important to note that the preliminary forecast is considered incomplete until it is reviewed by local jurisdictions. While the data layers in the above table were used to allocate the regional and county growth projections to jurisdictional and TAZ levels, SCAG staff realize that there may be corrections or more recent local sources available. This includes entitlements and development agreements, for which the existing dataset (last reviewed during Connect SoCal 2020 development) is likely to require updates to development boundaries, size, and timing in order to accurately reflect local jurisdictions’ assessment of development likelihood.

In addition, there may be local policies which result in higher or lower available capacity or potential for growth. Most notably, housing element updates are in various stages of completion and detailed data availability is incomplete. While RHNA allocations and major changes were included as best as possible, their integration into the preliminary growth forecast was necessarily incomplete and will rely on the LDX process to refine.

Furthermore, staff’s development of a regional approach to PDAs in consultation with TWG may not be fully reflective of areas which local jurisdictions are prioritizing for development. Mitigation measures or other unconsidered factors may also affect the likelihood of growth in GRRAs.



While the methodology described above reflects a starting point to the Forecasted Regional Development Pattern, changes to the preliminary figures are anticipated. In order to guide jurisdictions in providing SCAG with an accurate reflection of future households and employment at the jurisdiction and TAZ-levels, LDX includes a **Data Review and Verification Form**. This form should be used to formally indicate review and approval of data layers. It includes checkboxes for types of changes based on data corrections or local policies which affect the inputs to the preliminary growth projection methodology.

### **Regional Data Platform and Providing Feedback**

SCAG is pleased to accept feedback in any form; however, the newly-launched Regional Data Platform (RDP) (<https://hub.scag.ca.gov>) is the preferred method. The RDP is a collaborative data sharing and planning system designed to facilitate better planning for cities and counties of all levels across the region. The RDP has been designed with three major components—*Accessible Data and Information*, *Planning and Engagement Tools*, and *Data Sharing Tools and Workflows*.

The *Data Sharing Tools and Workflows* component has been centered around the LDX process and provides local jurisdictions with a login credential to view, visualize, and provide feedback on LDX data layers. Technical assistance and trainings are available from the Local Information Services (LIST) team and can be requested through the RDP or [list@scag.ca.gov](mailto:list@scag.ca.gov). LDX data layers will also be available to view through the PDF Data/Map Books at <https://scag.ca.gov/local-data-exchange> and jurisdictions may instead choose to provide feedback via email to [list@scag.ca.gov](mailto:list@scag.ca.gov).

**FISCAL IMPACT:** Work for this item is covered under OWP item 055.4856.01, Regional Growth and Policy Analysis.

### **ATTACHMENT(S):**

1. PowerPoint Presentation - GrowthAllocMethodology 2spp

# Local Data Exchange Complete Launch

and preliminary growth forecast methodology

Kevin Kane, PhD

Program Manager, Demographics & Growth Vision

June 2, 2022

[www.scag.ca.gov](http://www.scag.ca.gov)



## Presentation Outline



- LDX and the steps to a Forecasted Regional Development Pattern - *which ingredients are new?*
- Preliminary small area (jurisdiction and TAZ) growth forecast methodology - *what's the recipe?*
- Local Data Exchange review process – *what do we need from local jurisdictions for it to be 'fully baked' ?*

# Connect SoCal 2024: Development Update



## COMPLETED

- ✓ Regional & County Forecast
- ✓ Relaunched Working Groups
- ✓ Regional Data Platform Launch

## LOCAL DATA EXCHANGE (LDX)

- Soft Launch – February 23<sup>rd</sup>
- Complete Launch – May 23<sup>rd</sup>
- Input Deadline – December 2<sup>nd</sup>

# Objective: Forecasted Regional Development Pattern



*“set forth a forecasted development pattern for the region, which, when integrated with the transportation network, and other transportation measures and policies, will reduce the greenhouse gas emissions from automobiles and light trucks to achieve, if there is a feasible way to do so, the greenhouse gas emission reduction targets approved by the state board, and (viii) allow the regional transportation plan to comply with Section 176 of the federal Clean Air Act (42 U.S.C. Sec. 7506).” California Government Code 65080(b)(vii)*



Connect SoCal 2020 Forecasted Regional Development Pattern

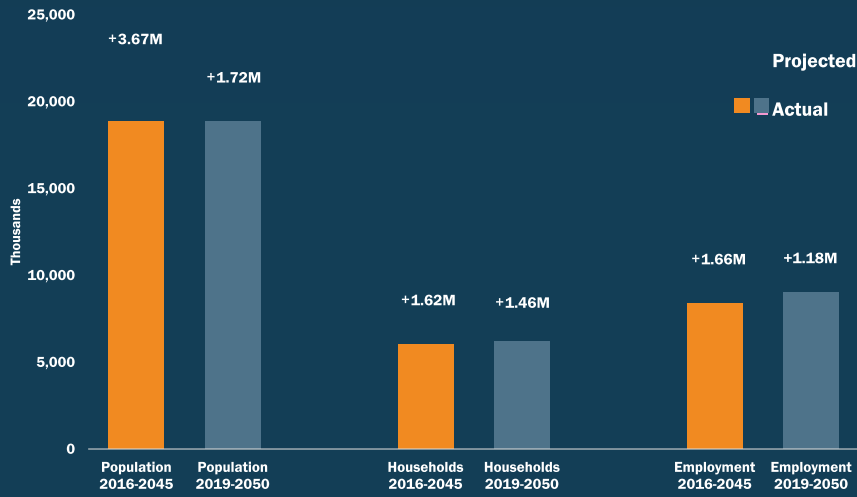
- LDX GETS HERE BY BEING:**

  - ✓ Rooted in local planning
  - ✓ Steered by a regional vision
  - ✓ Aligned with state and federal policy



Attachment: PowerPoint Presentation - GrowthAllocMethodology 2spp (Connect SoCal 2024 Local Data Exchange Launch)

### SCAG Region Population, Households and Employment Preliminary Connect SoCal 2020 vs. Connect SoCal 2024



**LESS GROWTH THAN BEFORE:**

- ✓ Less than half the population growth...
- ✓ means only 71% of the job growth...
- ✓ but still about 90% of the household growth due to smaller households and pent-up demand.

Source: Connect SoCal 2024 Preliminary Projections

### Four key forecast scales



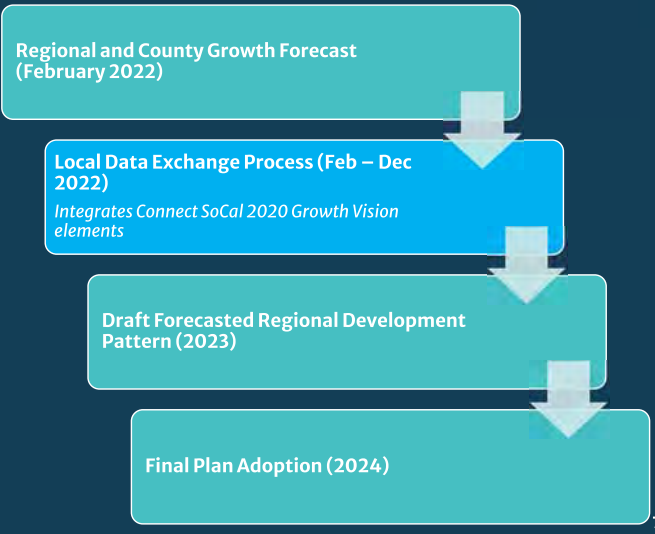
# Simplified Process for Connect SoCal 2024



## Connect SoCal 2020

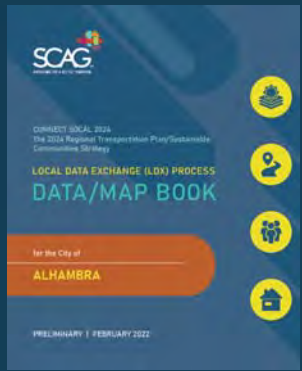


## Connect SoCal 2024



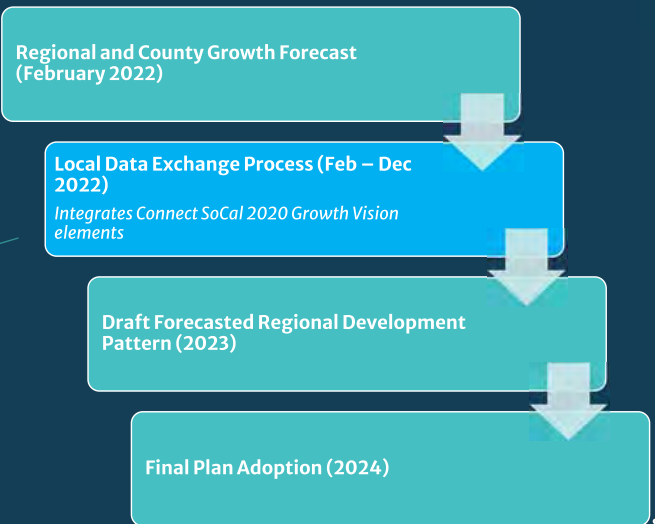
7

# Simplified Process for Connect SoCal 2024



- More transparent methodology
- Developed *before* local review
- Allows local jurisdictions to correct and integrate *their* visions
- Timely plan delivery

## Connect SoCal 2024



8

Attachment: PowerPoint Presentation - GrowthAllocMethodology 2spp (Connect SoCal 2024 Local Data Exchange Launch)

# LDX Data Layers



CATEGORY	LAYER NAME	REVIEW TYPE
Land Use	General Plan	Update/Corrections
	Zoning	Update/Corrections
	Existing Land Use	Update/Corrections
	Specific Plan Land Use	Update/Corrections
	Key Entitlements	Update/Corrections
Priority Development	Neighborhood Mobility Areas	Optional
	Livable Corridors	Optional
	Job Centers	Optional
	Housing Trajectory	Update/Corrections and site inventory upload
Transportation	High Quality Transit Areas	Reference Only
	Transit Priority Areas	Reference Only
	Regional Bikeways	Optional
	Regional Truck Routes	Optional

CATEGORY	LAYER NAME	REVIEW TYPE
Green Region Resource Areas (SB 375)	Resilience (Flood areas, sea level rise, wildfire risk, WUI)	Reference Only
	Open Space/Habitat (Open space and parks, endangered species and plants*, sensitive habitat areas, natural community and habitat conservation plans*)	Reference Only
	Administrative/Working Lands (Tribal nations, military installations, farmlands)	Reference Only
Geographical Boundaries	City Boundary and Sphere of Influence	Reference Only
	Census Tract	Reference Only
Preliminary Growth	TAZ (Tier2)	Reference Only
	Jurisdiction-level projections of households and employment (2019, 2035, 2050)	Update/Corrections
	Tier 2 TAZ-level projections of households and employment (2019, 2035, 2050)	Update/Corrections

PDF versions are available through Data/Map Books and digital versions are available to local jurisdictions through their RDP LDX login.

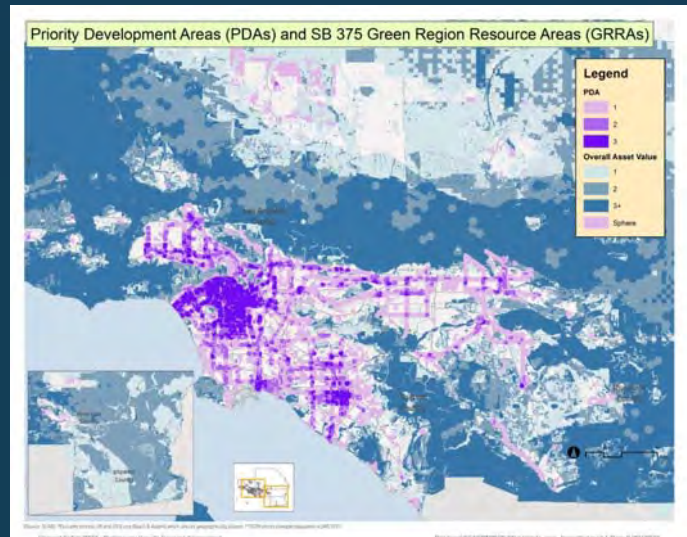
\* Note: layers displayed in Data/Map Books, but not included in multi-benefit asset maps

# Preliminary small area household forecast methodology



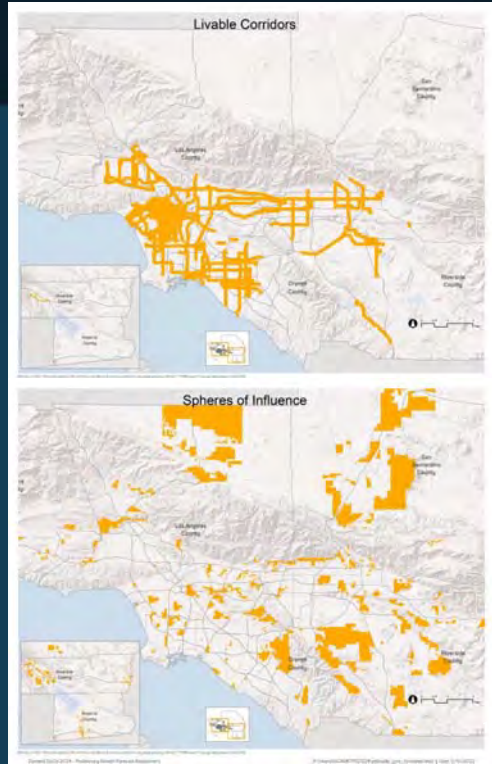
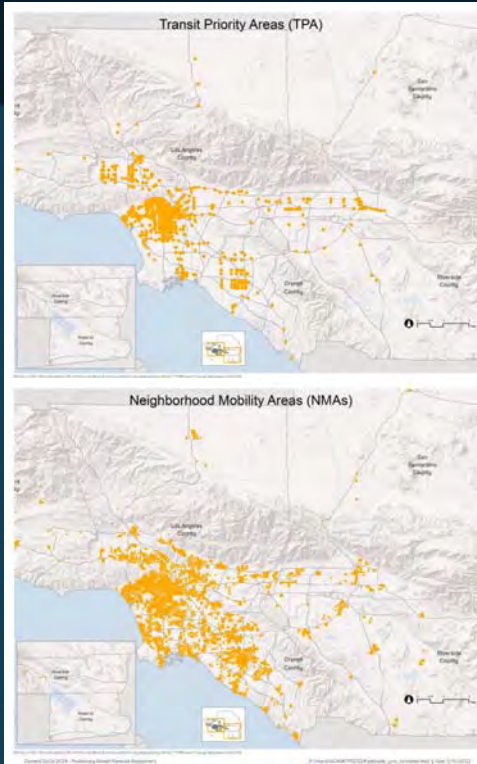
1. Estimate remaining general plan capacity and control to county/regional projection
2. Add RHNA/housing element rezone sites as needed
3. Growth prioritization steps
  - Increase in Priority Development Areas (PDAs)
  - Minimize in Green Region Resource Areas (GRRAs)

Number of Priority Development Areas	4	3	2	1	0	4	3	2	1	0	4	3	2	1	0	4	3	2	1	0
Number of Green Region Resource Areas	0	0	0	0	0	1	1	1	1	1	2	2	2	2	2	3+	3+	3+	3+	3+
Step #	1	2	3	4	5	6	7	8	9	10	11	12	13	14	15	16	17	18	19	20



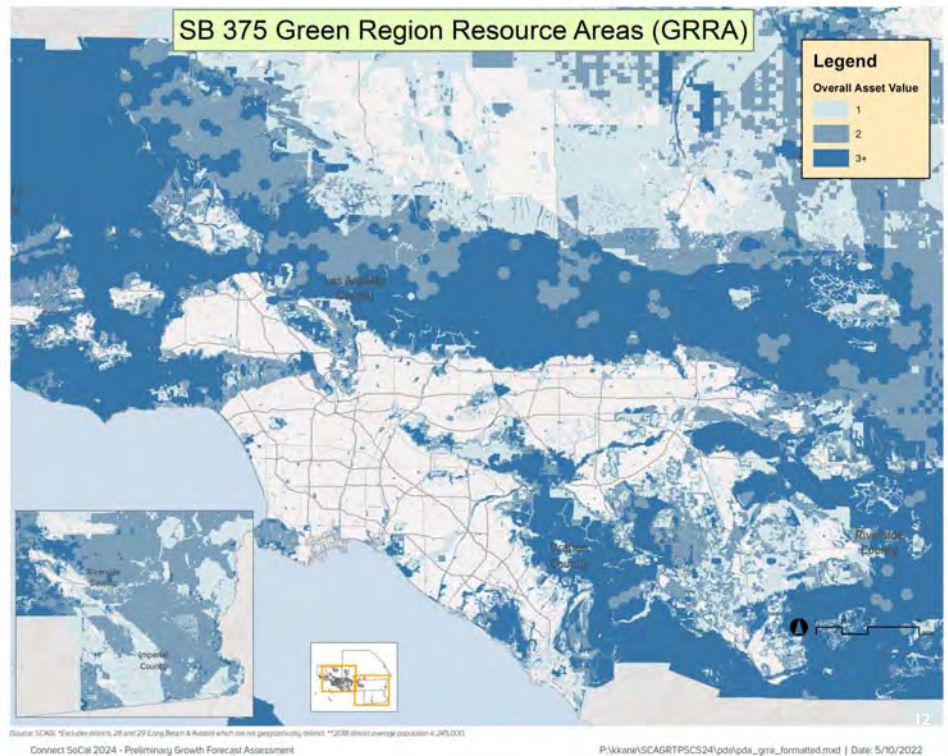
## Priority Development Areas

- Identify how many of the four a parcel lies in
  - Neighborhood Mobility Areas (NMA)
  - Livable Corridors
  - Transit Priority Areas (TPA)
  - Sphere of Influence



## SB 375 Green Region/Resource Areas

- Identify how many of these a parcel lies in:
  - 100 Year Flood Plains
  - 3 ft. sea level rise
  - High and very high Wildfire risk
  - Wildland Urban Interface & Intermix
  - Open space and parks (3)
  - Sensitive habitat areas (3)
  - Tribal nations
  - Military installations
  - Farmlands



# SB 375 Green Region Resource Areas – 2024 Plan Refresh



## Connect SoCal 2020 Growth Vision

## Connect SoCal 2024 Local Data Exchange

Tribal Nation Lands	Tribal Nation Lands
Military Lands	Military Lands
Open Space and Conserved Lands	Open Space and Conserved Lands
Sea Level Rise Areas (2 ft)	Sea Level Rise Areas ( <b>3 ft</b> )
Farmlands in Unincorporated Areas	Farmlands in Unincorporated Areas
Wildland-Urban Interface (WUI)	Wildland-Urban Interface (WUI)
Grazing Lands and Farmlands within Incorporated Jurisdictions	Farmlands within Incorporated Jurisdictions
500 Year Flood Plains	<b>100</b> Year Flood Plains
CAL FIRE Very High Severity Fire Risk (state and local)	CAL FIRE Very High Severity Fire Risk (state and local)
Natural Lands and Habitat Corridors	Sensitive Habitat Areas
Wetlands	Wetlands
Habitat Connectivity	Habitat Connectivity
Habitat Quality	Habitat Quality
	Habitat Conservation Plans*
	Endangered Species and Plants*

### Key

Updated data - new source
Updated data - same source
No updated data - used Connect SoCal 2020 layer
New data category

Notes: **Bolded and underlined** text indicates additional updates. See Data/Map Books at <https://scag.ca.gov/local-data-exchange> for additional detail on Connect SoCal 2024 layers.

\* Layers displayed in Data/Map Books, but not included in multi-benefit asset maps

# Forecasted Regional Development Pattern relies on local review & approval to be complete



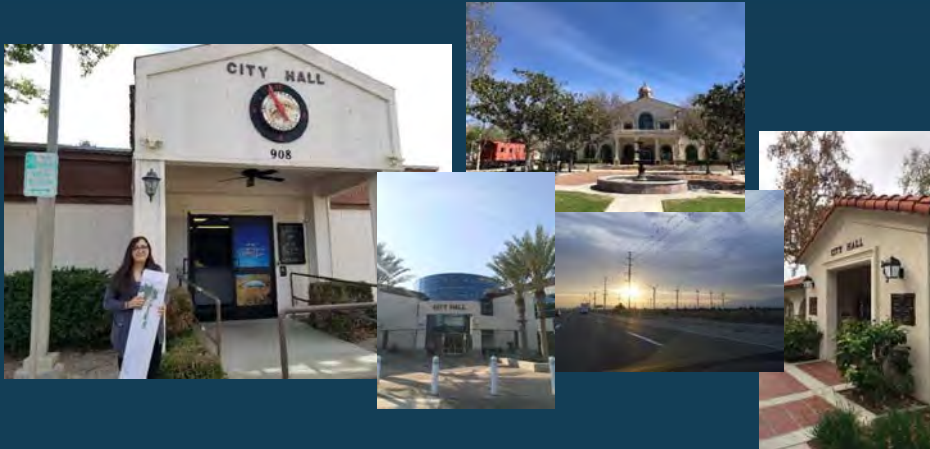
The image displays two screenshots of the SCAG LDX Editor. The top screenshot shows a map with various colored zones and a sidebar with navigation options like 'About', 'Feedback', and 'Edit (BETA)'. The bottom screenshot shows a similar map view with a text box containing a disclaimer: "The objective of this data is to improve SCAG's forecast of... This project is not intended to reflect...".

### Needs review for:

1. Data corrections
2. Local policy



# LDX One-on-one meetings

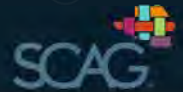


Cities in Imperial, Los Angeles, and Ventura counties can schedule a meeting today!

- One-on-one meetings with all 197 jurisdictions in 2022
- Conducted by Local Information Services Team (LIST) – [list@scag.ca.gov](mailto:list@scag.ca.gov)

Note: Most meetings are anticipated to be virtual for Connect SoCal 2024.

# Key Points: LDX and Preliminary Growth Forecast Methodology



1. Where will the region grow? *Forecasted Regional Development Pattern*
2. “Starting point” now takes into account:
  - Housing element update
  - Priority Development Areas
  - SB 375 Green Region / Resource Areas
3. LDX allows jurisdictions to provide **corrections and local policy updates**.
4. Objective: hit statutory targets **without needing** further modification

Schedule a one-on-one meeting now

Input due December 2, 2022

Better regional planning by integrating local plans.

Thank You!

<https://scag.ca.gov/local-data-exchange>

<https://hub.scag.ca.gov>

[list@scag.ca.gov](mailto:list@scag.ca.gov)

Kevin Kane, PhD

Program Manager, Demographics and Growth Vision

[kane@scag.ca.gov](mailto:kane@scag.ca.gov)

[www.scag.ca.gov](http://www.scag.ca.gov)

