

# Birth Trends in Los Angeles County

Louise Rollin-Alamillo, MS  
Los Angeles County Department of Public Health

June 26, 2017  
SCAG/USC 28<sup>th</sup> Annual Demographic Workshop

## Objectives

- Show trends in births in LAC, 1990 - 2015
  - Mother's race/ethnicity
  - Mother's nativity
  - Mother's age
  - Geographic Distribution (city/community)
- Review factors possibly associated with trends
  - Demographic (migration)
  - Socioeconomic

## Methods

Calculation of rates and other statistics:

- Total fertility rates and age-specific birth rates
- Mean age at first birth

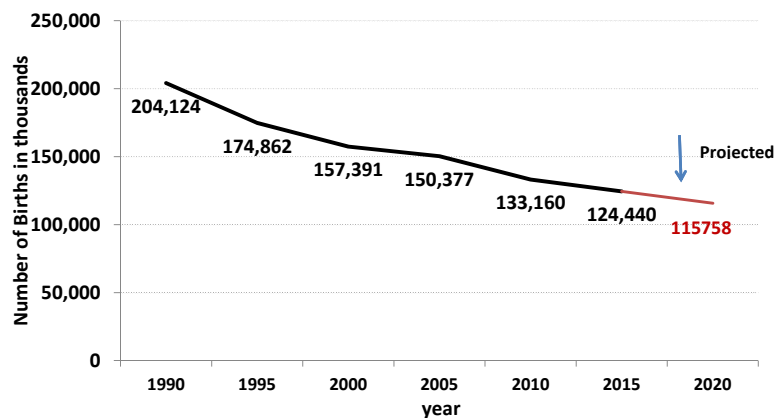
## Total fertility rates - defined

- A measure of completed family size.
- Average number of children a woman would bear if today's age-specific rates of fertility prevailed throughout her lifetime.
- Best for making comparisons over time or between groups.
- The replacement rate is a TFR of 2.1 birth per woman.

## Data Sources

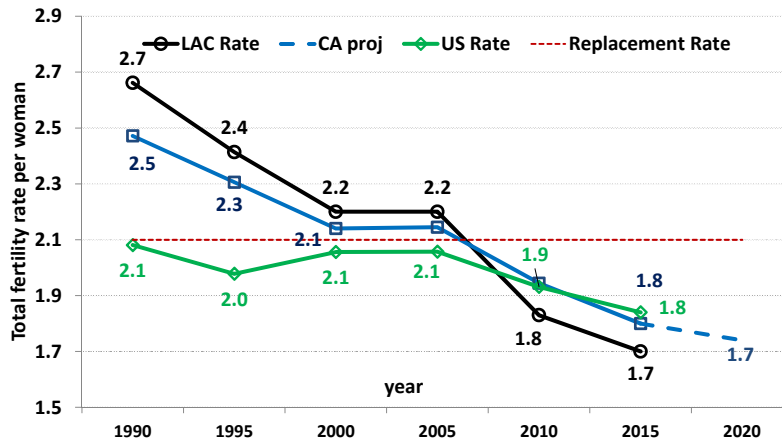
- Birth data: Birth Statistical Master File (BSMF)
- Population denominators and statistics:
  - Public Use Microdata file (PUMS)
  - Summary File 1 from 1990 and 2000 Census
  - American Community Survey (ACS)

## Births, Los Angeles County, 1990-2020.



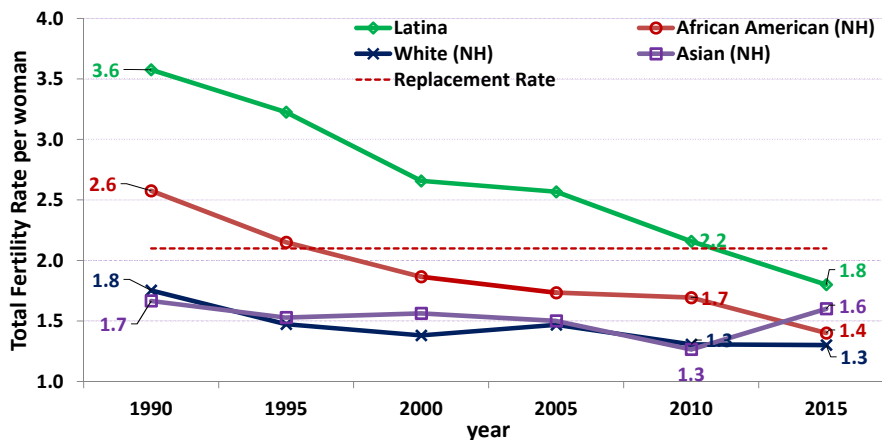
Source: California Department of Public Health, Birth Statistical Master Files for Los Angeles County Residents. California Department of Finance. Demographic Research Unit. 2017. Historical and Projected Fertility Rates and Births, 1990-2040. Sacramento: California Department of Finance. February 2017.

## Total fertility rates, Los Angeles County, CA, and US, 1990-2020.

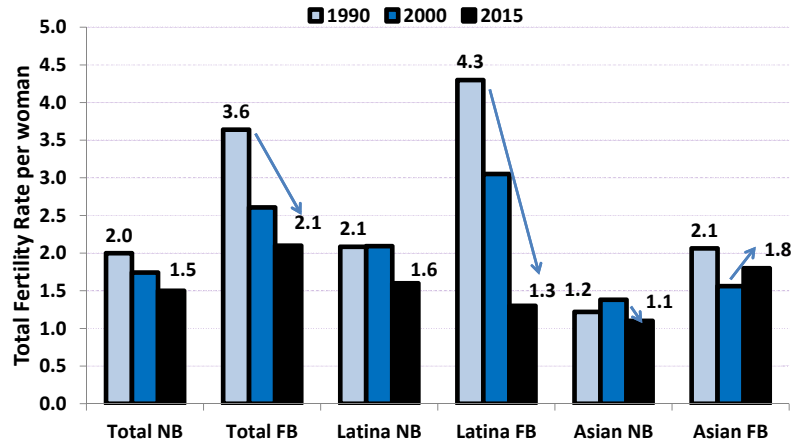


Data source: Birth Statistical Master File, California Department of Public Health and NCHS Bridged-Race Estimates for 1990-2015.  
 Source: California Department of Finance, Demographic Research Unit. 2017. Historical and Projected Fertility Rates and Births, 1990-2040. Sacramento: California Department of Finance. February 2017. Martin JA, Hamilton BE, Osterman MJ, et al. Births: Final data for 2015. National vital statistics report; vol 66, no 1. Hyattsville, MD: National Center for Health Statistics. 2017.

## Total fertility rates by mother's race/ethnicity, Los Angeles County, 1990-2015

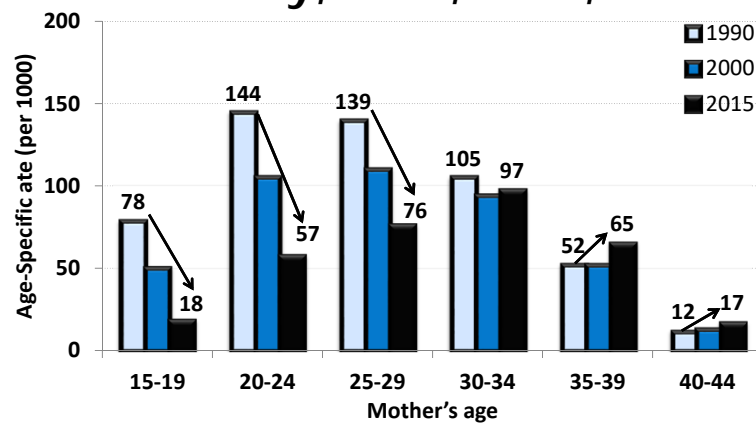


## Total fertility rates by mother's nativity, Los Angeles County, 1990, 2000, and 2015.



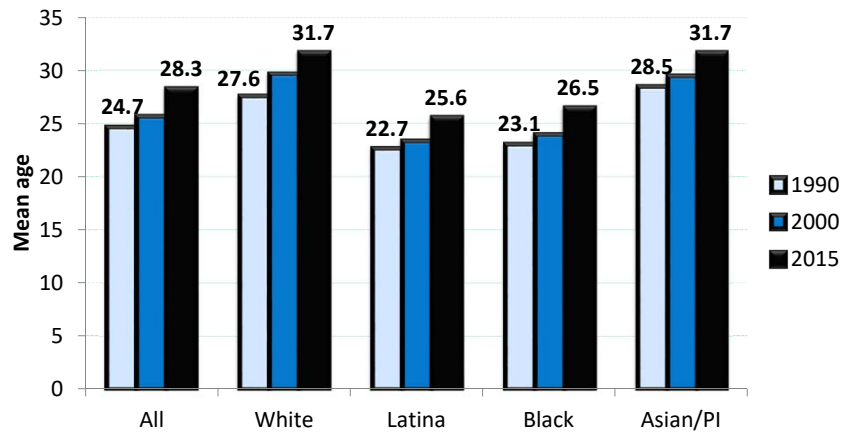
8

## Age-specific rates, Los Angeles County, 1990, 2000, 2015.



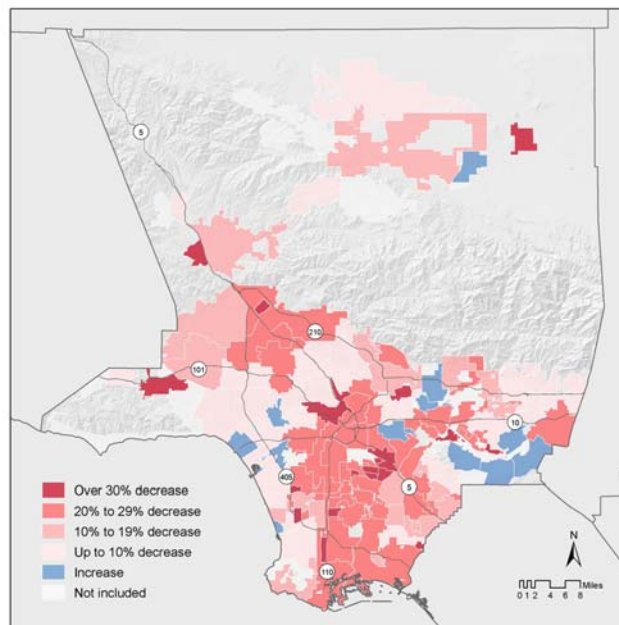
9

### Mean age at first birth by mother's race/ethnicity, Los Angeles County, 1990, 2000, 2015.



Data source: California Department of Public Health, Birth Statistical Master File, 1990, 2000, and 2015.

### Changes in births by city, 2007 vs 2015



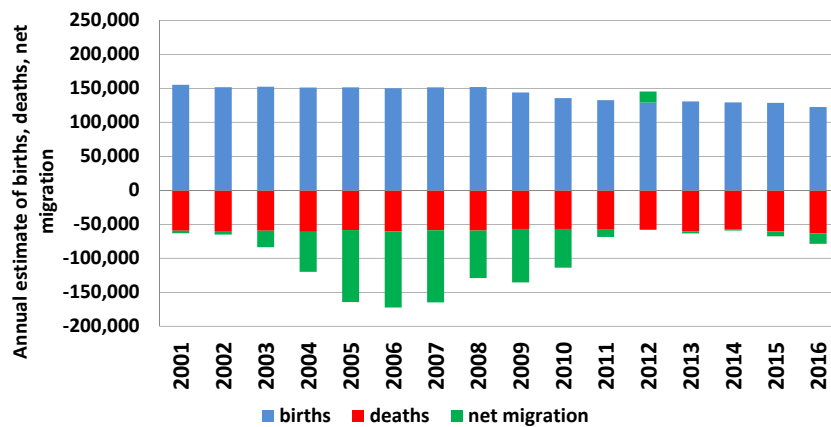
## Changes in Migration

- LA County has had declining in-migration in the past 20 years
- Recession curtailed net migration even further
  - Fewer women 20-34 between 2000 & 2010
- Since 2010, domestic out-migration = immigration
  - Increases in women 20-34 (especially Latina and Asian)

Data source: U.S. Census Bureau, 1990 Census, Summary File 1. 2000 Census Summary File 1, American Community Survey 2011 1-year Survey.

12

## Births, deaths, and net migration, LAC, 2001-2016



Source: State of California, Department of Finance, Revised County Population Estimates and Components of Change by County, July 1, 2000-2010. Sacramento, California, December 2011. State of California, Department of Finance, Population Estimates and Components of Change by County, July 1, 2010-2016. Sacramento, California, December 2016.

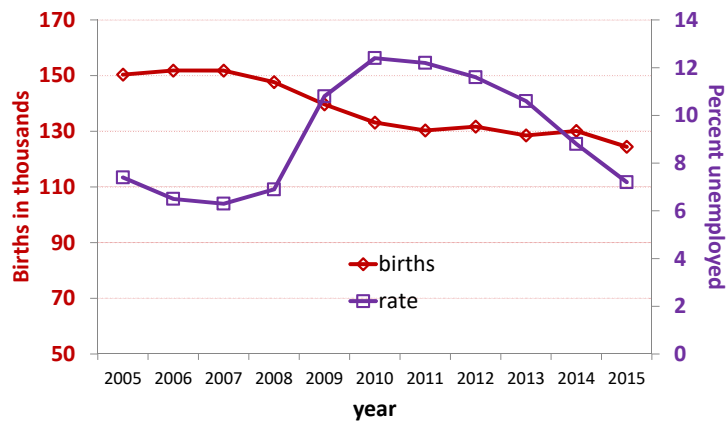
13

## Economic Factors

- Unemployment & changes in births
- Birth rate by mother's educational attainment
- Change in Medi-Cal paid deliveries

14

## Change in unemployment rate and births, Los Angeles County, 2005-2015.

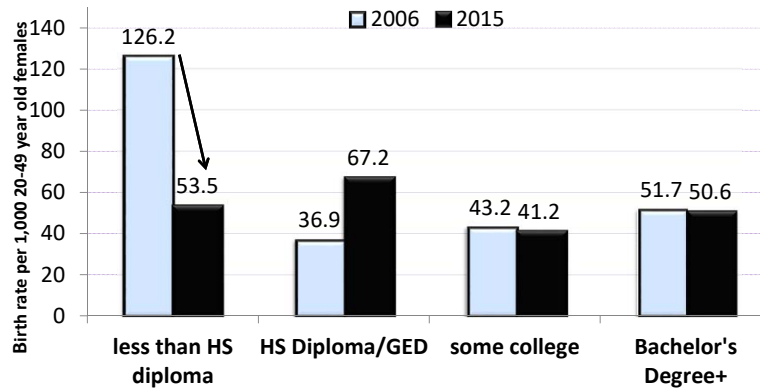


Data source: Census Bureau's American Community Survey 1-year samples, Table S2301.  
California Department of Public Health's Birth Statistical Master Files, Los Angeles County Residents

15



## Birth rates by mother's educational attainment, Los Angeles County, 2006 vs 2015.



Data sources: California Department of Public Health, Birth Statistical Master File, 2006 and 2015. Census Bureau's Public Use Microdata (PUMS) 2006 and 2015 1-year estimates.

16

## Delivery Payment by Race/Ethnicity, 2007 vs 2015

Payment Source for Delivery	Mother's Race/Ethnicity	2007	2015	Diff	% Diff
Medi-Cal	White	4,492	4,227	-265	-5.9%
	Latina	66,546	45,309	-21,237	-31.9%
	Black/African American	5,648	4,889	-759	-13.4%
	Asian	3,964	3,333	-631	-15.9%
	Total	80,650	57,758	-22,892	-28.4%
Private Insurance	White	19,209	17,933	-1,276	-6.6%
	Latina	23,406	20,843	-2,563	-11.0%
	Black/African American	4,064	3,274	-790	-16.4%
	Asian	10,294	10,578	284	+2.8%
	Total	56,973	52,628	-4,345	-7.6%

## Conclusions

- Births continue to decline with no signs of leveling off
- Declining more steeply for Latinas and African American
- Increasing for Asian (although this may be primarily due to birth tourism)
- Continue to decline for mothers under 35 and increase gradually for mothers 35 years and older
- Declining for mothers with less than a high school diploma and Medi-Cal paid deliveries.

18

## Public Health Impacts continued...

- Fewer births → fewer children → fewer working age adults.
  - Declining in-migration
  - Baby boomers retiring AND higher life expectancy → increasing ratio of seniors to working age adults.
- = High Fiscal impacts

19

## Policy Interventions

- Consider intergenerational equity issues to enable young people to become parents
  - secure good paying jobs, easier transition to home ownership, reduce college debt.
- Consider pro-natalist policies that seek to reverse the decline in total fertility rate
  - Provide allowance for newborn children
  - Promote policies that embrace working mothers
  - Paid maternity and paternity leaves
- Later retirement and more savings