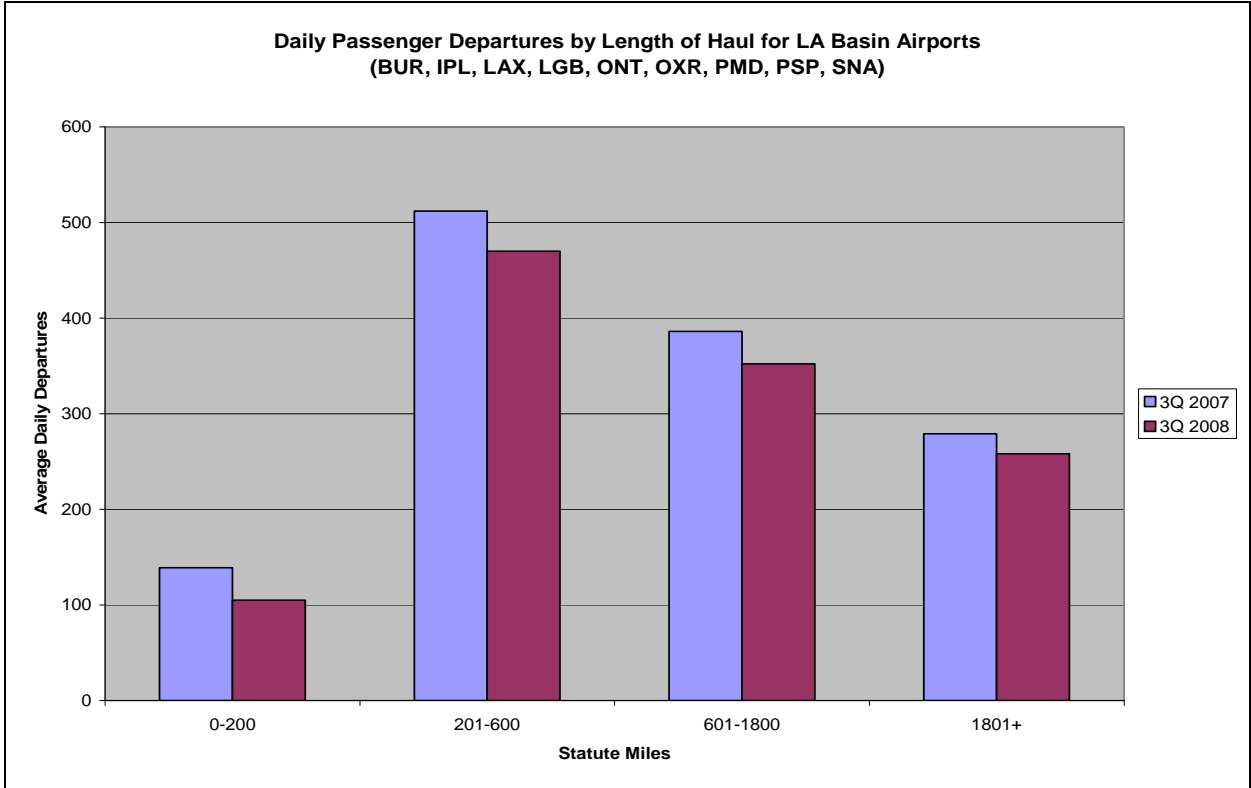


Quarterly Reports for  
Southern California Association of  
Governments (SCAG)

Produced by  
BACK Aviation Solutions

3<sup>rd</sup> Quarter 2008



**Based on Schedules Data**

**BUR- Burbank**

**IPL - El Centro/Imperial**

**LAX - Los Angeles (INTL)**

**LGB - Long Beach**

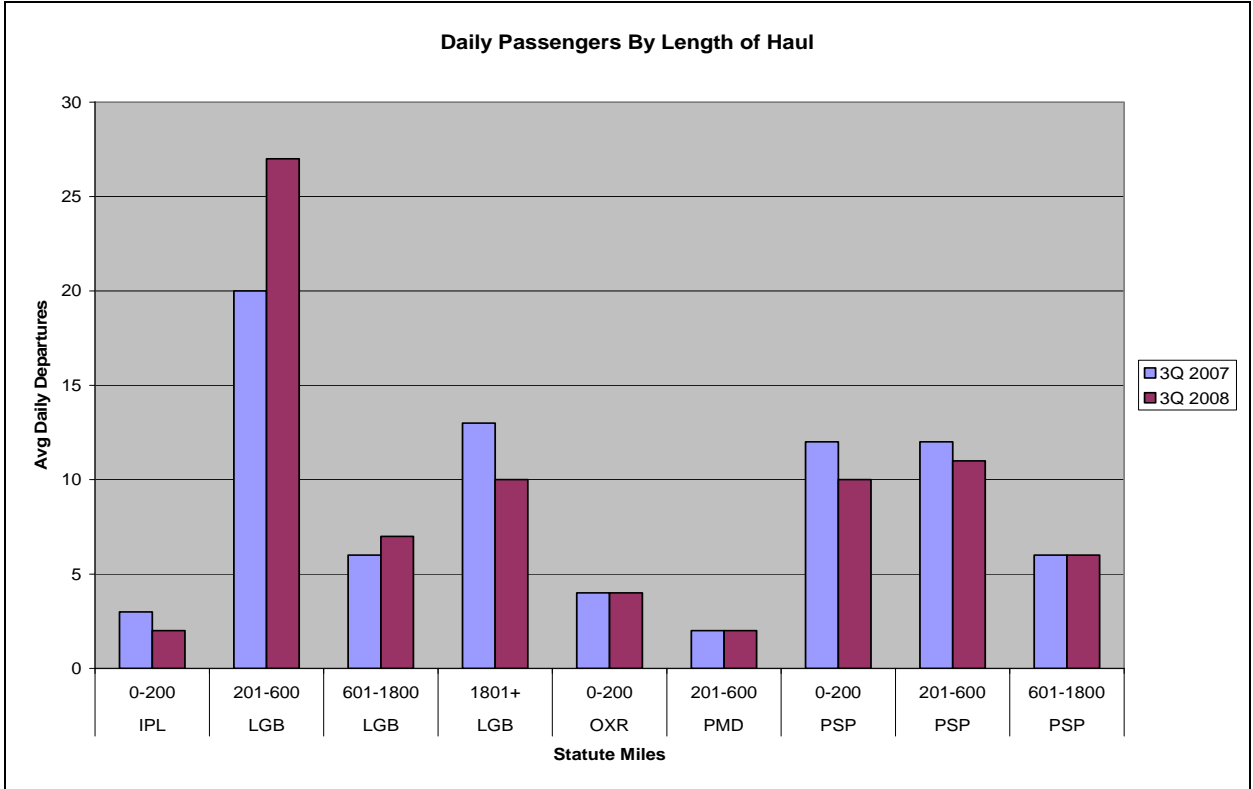
**ONT - Ontario**

**OXR – Oxnard/Ventura**

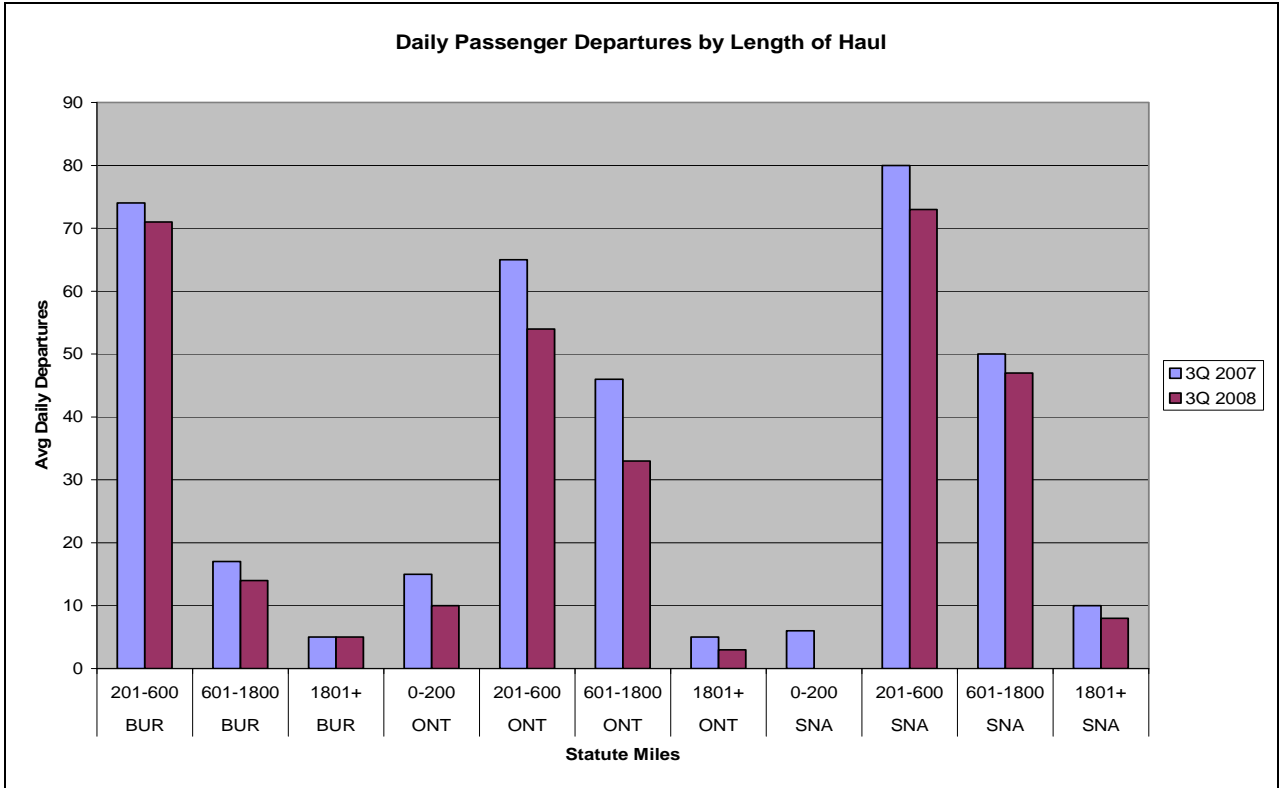
**PMD -Palmdale/Lancaster**

**PSP- Palm Springs**

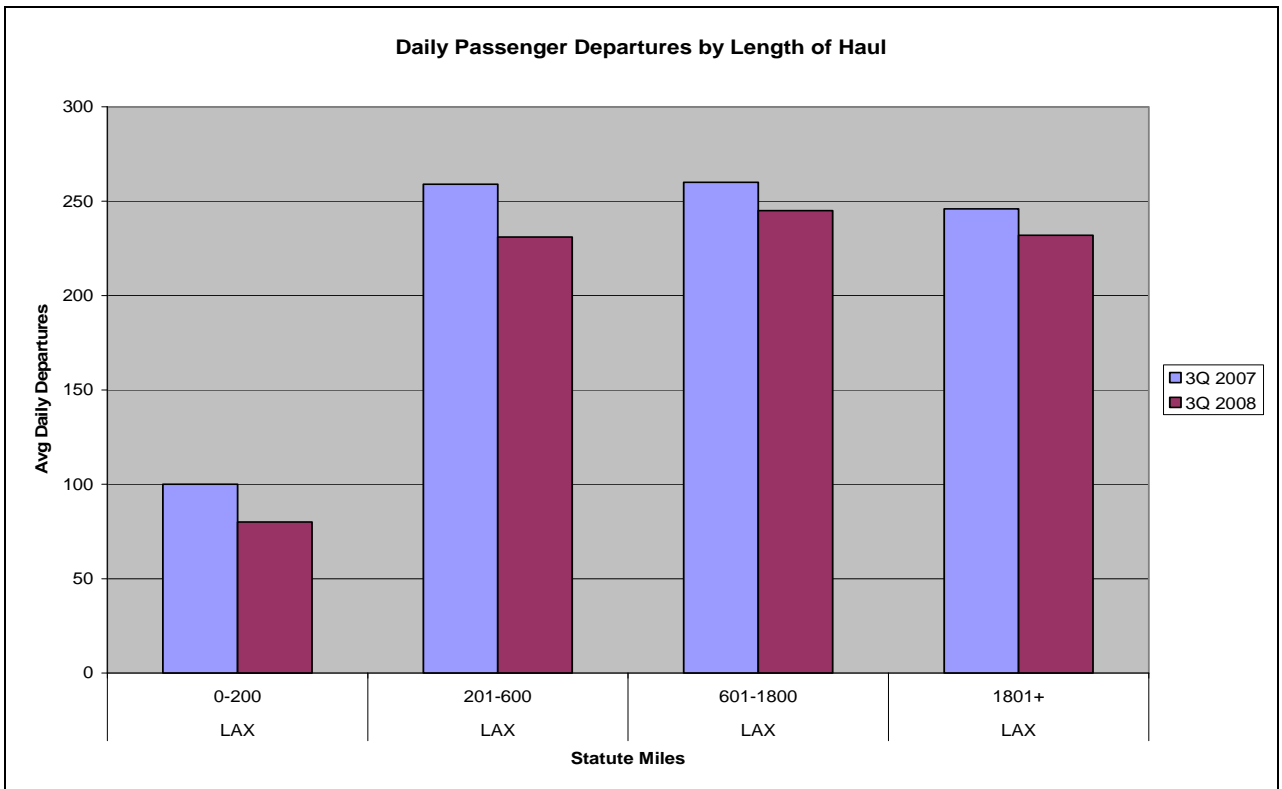
**SNA - Santa Ana (J. Wayne)**



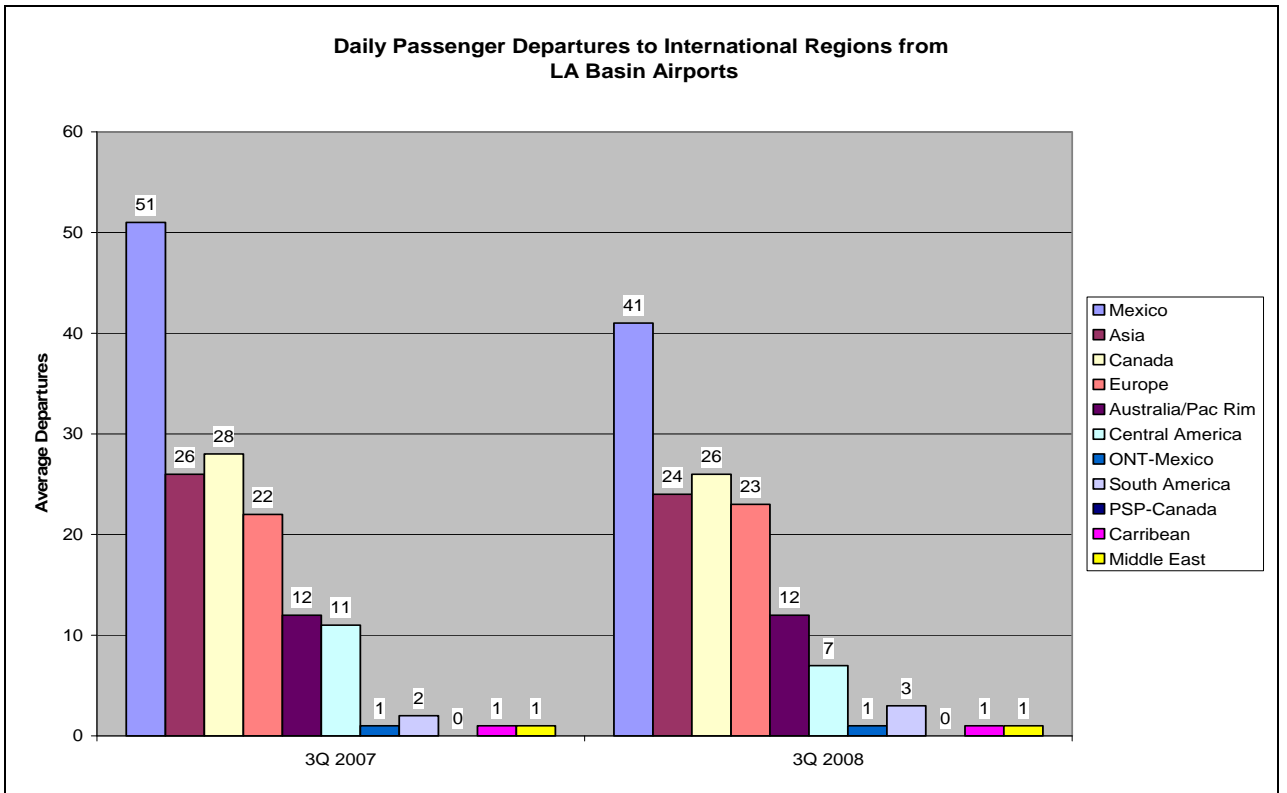
**Based on Schedules Data**



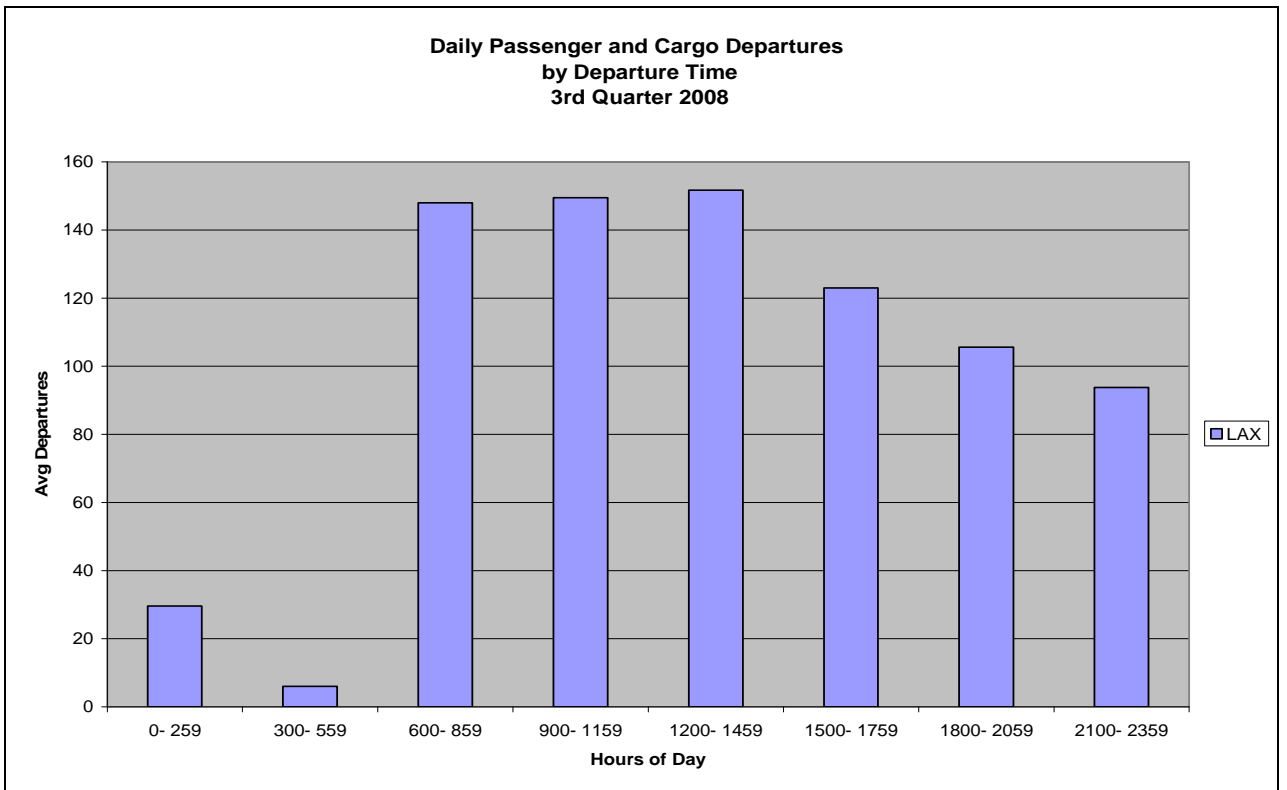
**Based on Schedules Data**



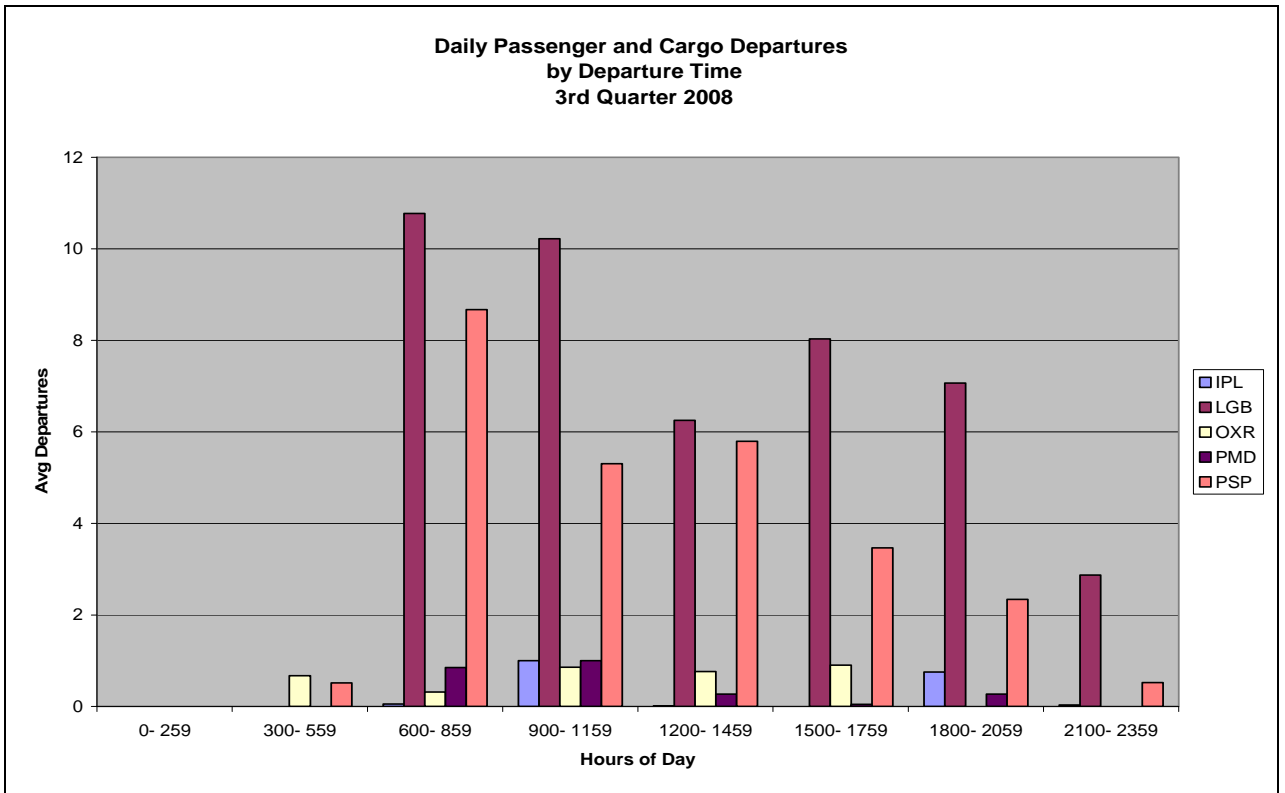
**Based on Schedules Data**



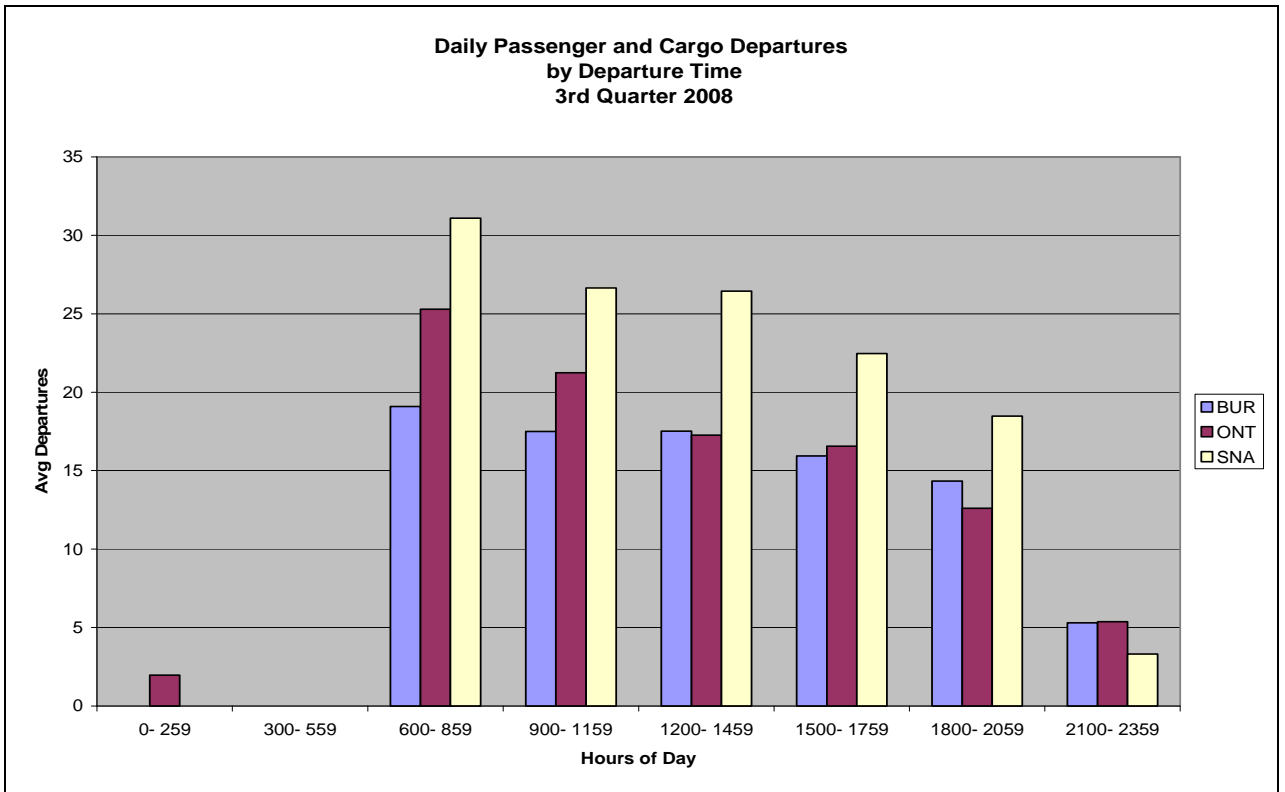
**Based on Schedules Data**



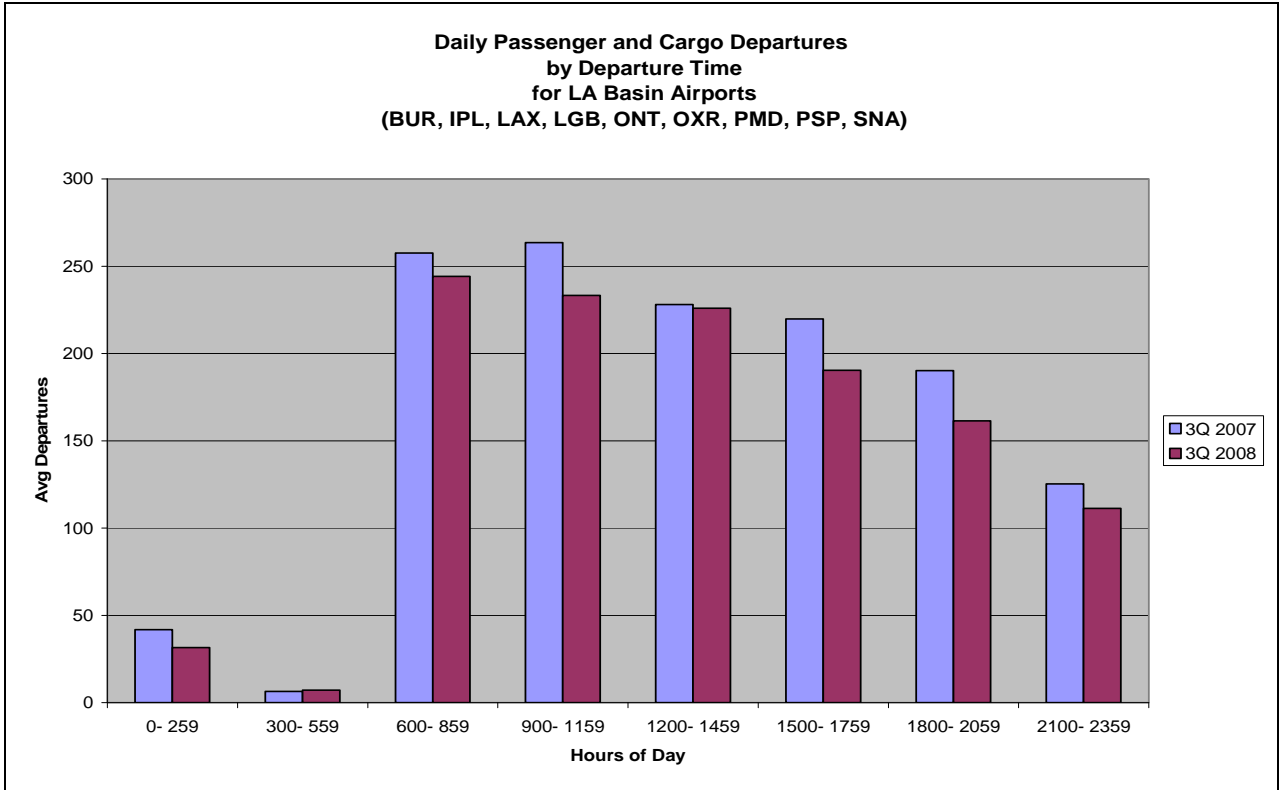
**Based on Schedules Data**



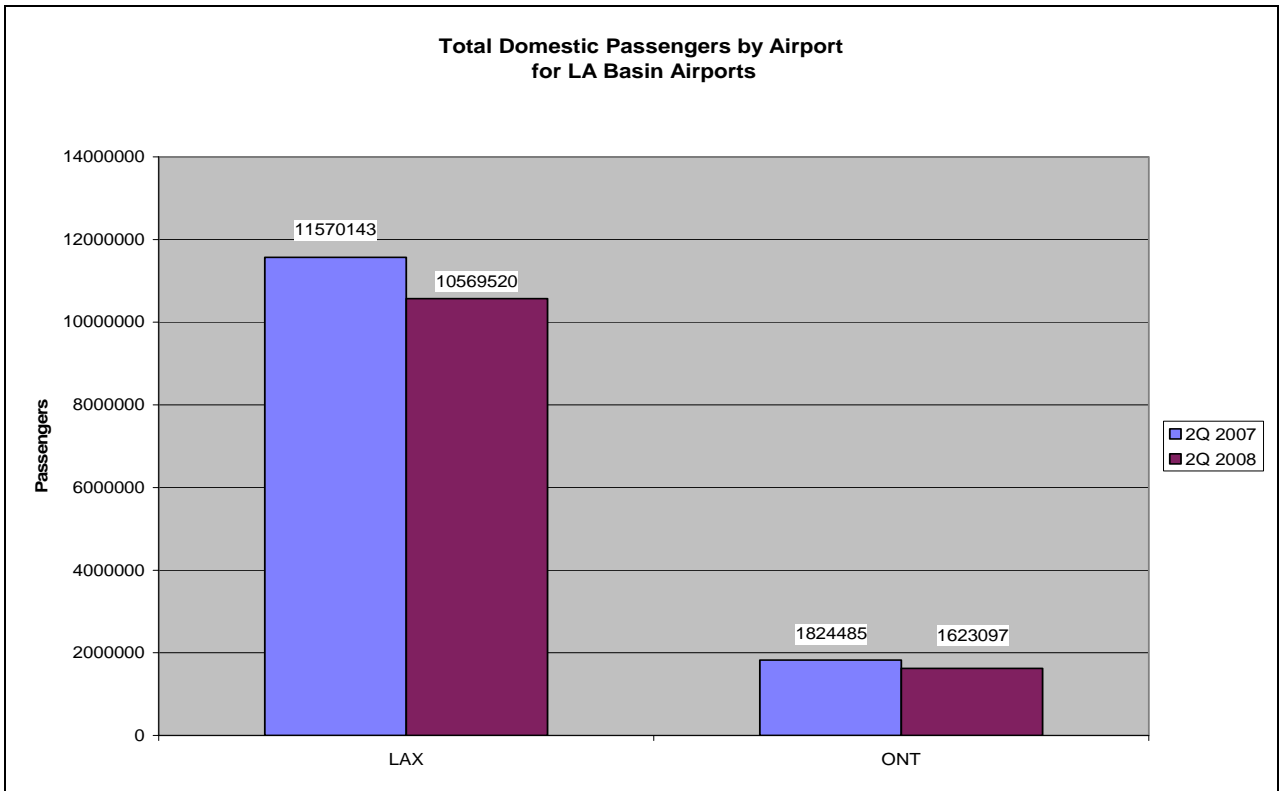
**Based on Schedules Data**



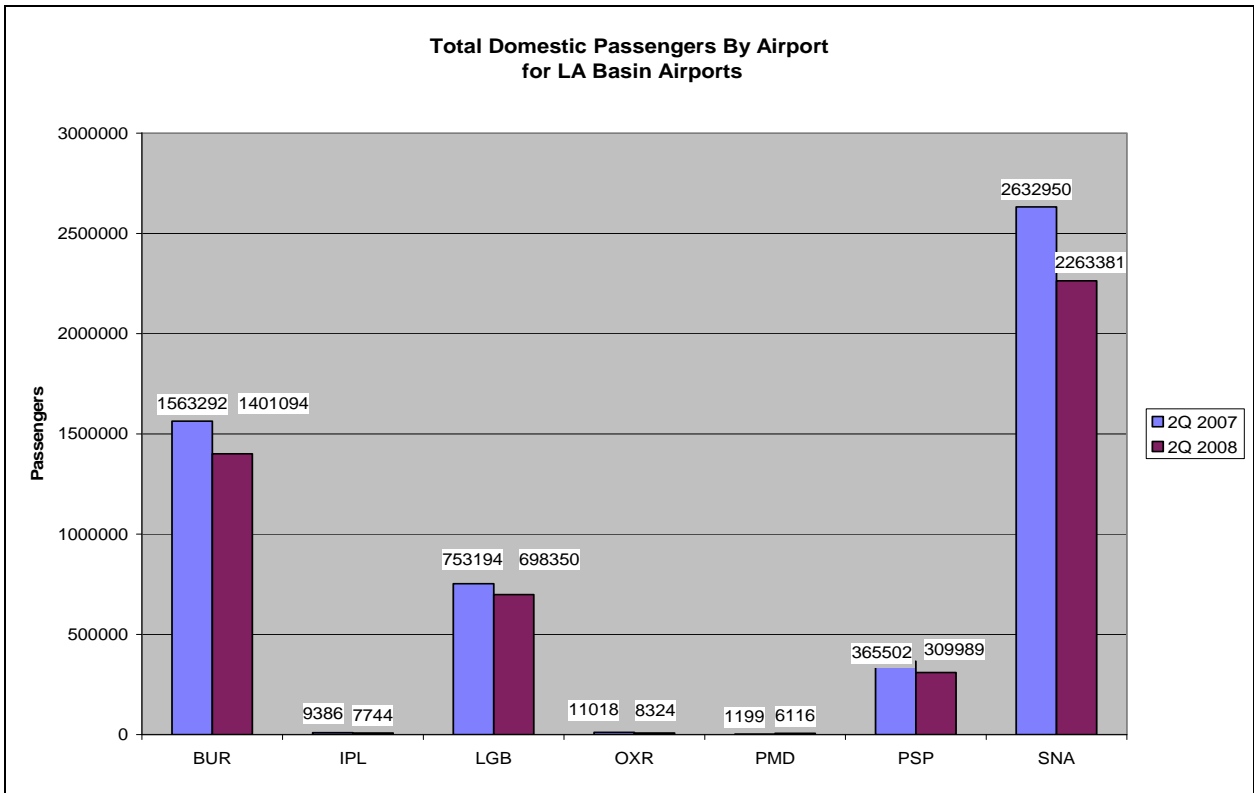
**Based on Schedules Data**



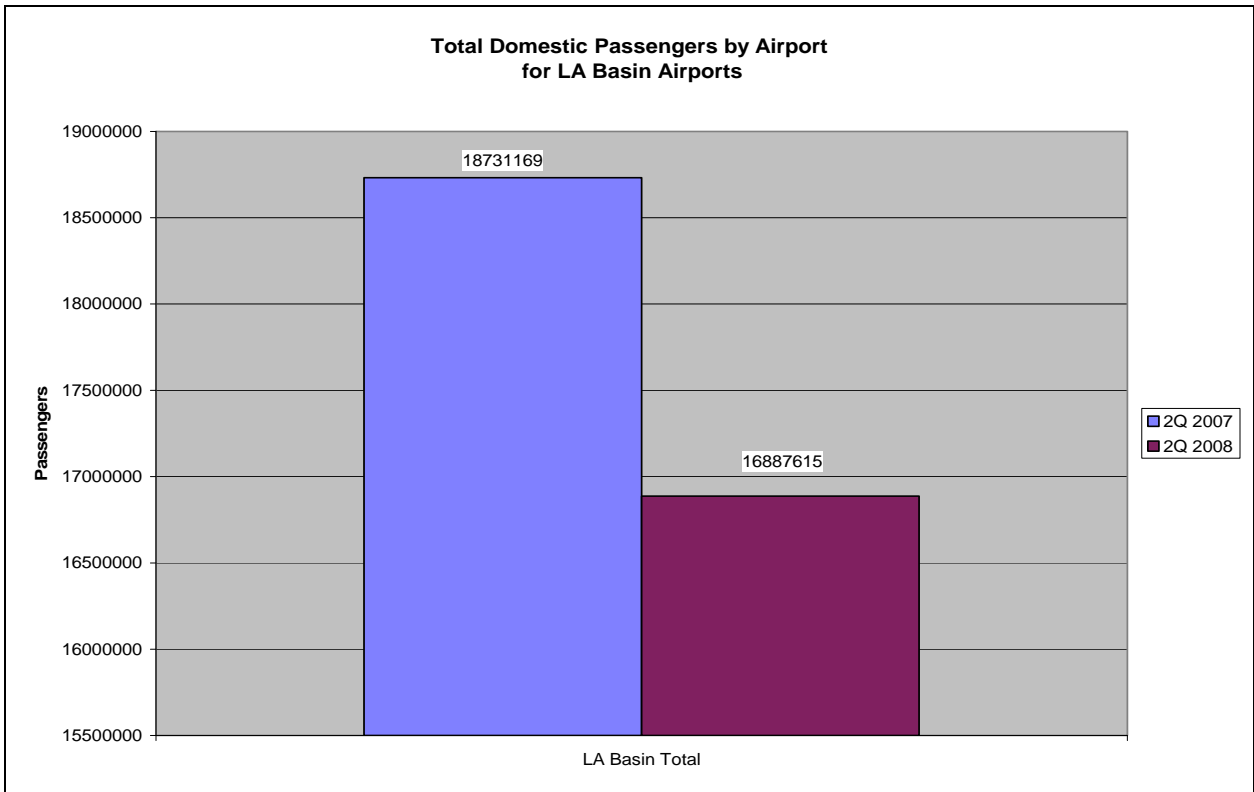
**Based on Schedules Data**



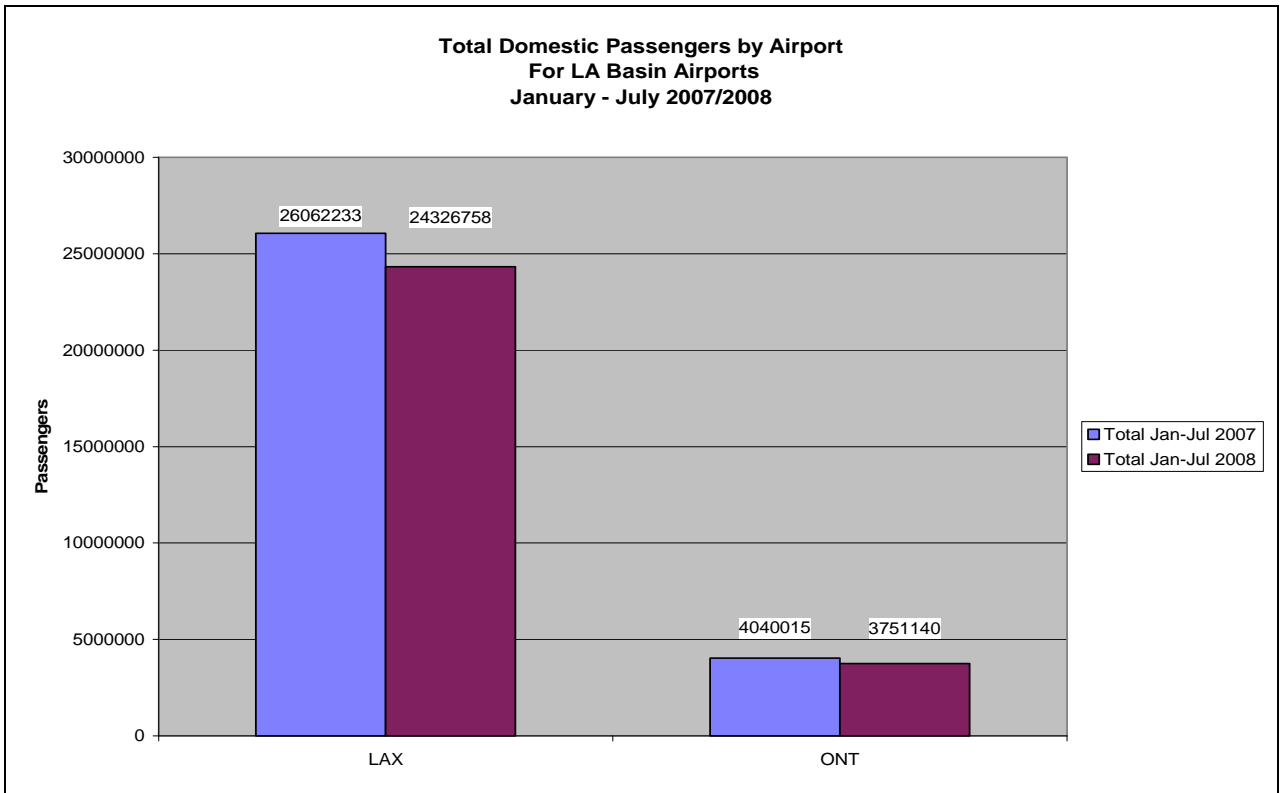
**Based on DOT Traffic Data**



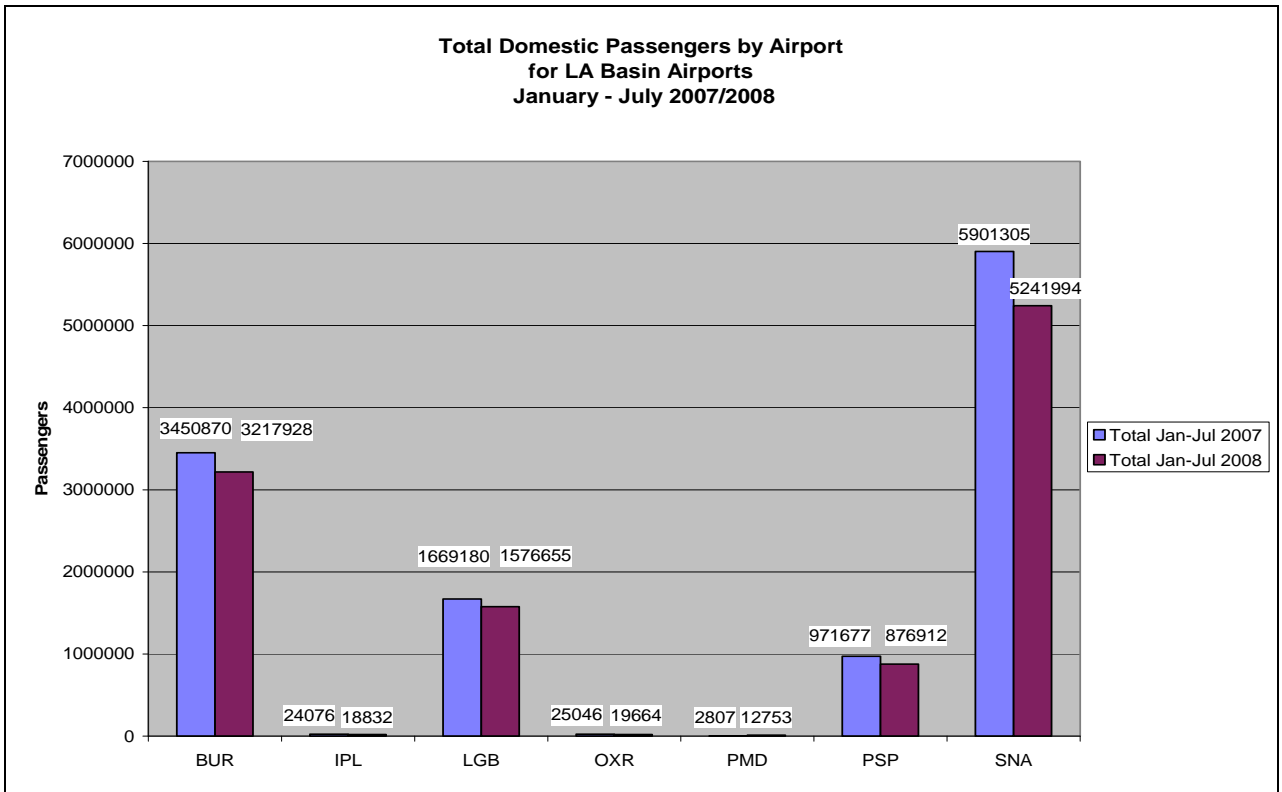
**Based on DOT Traffic Data**



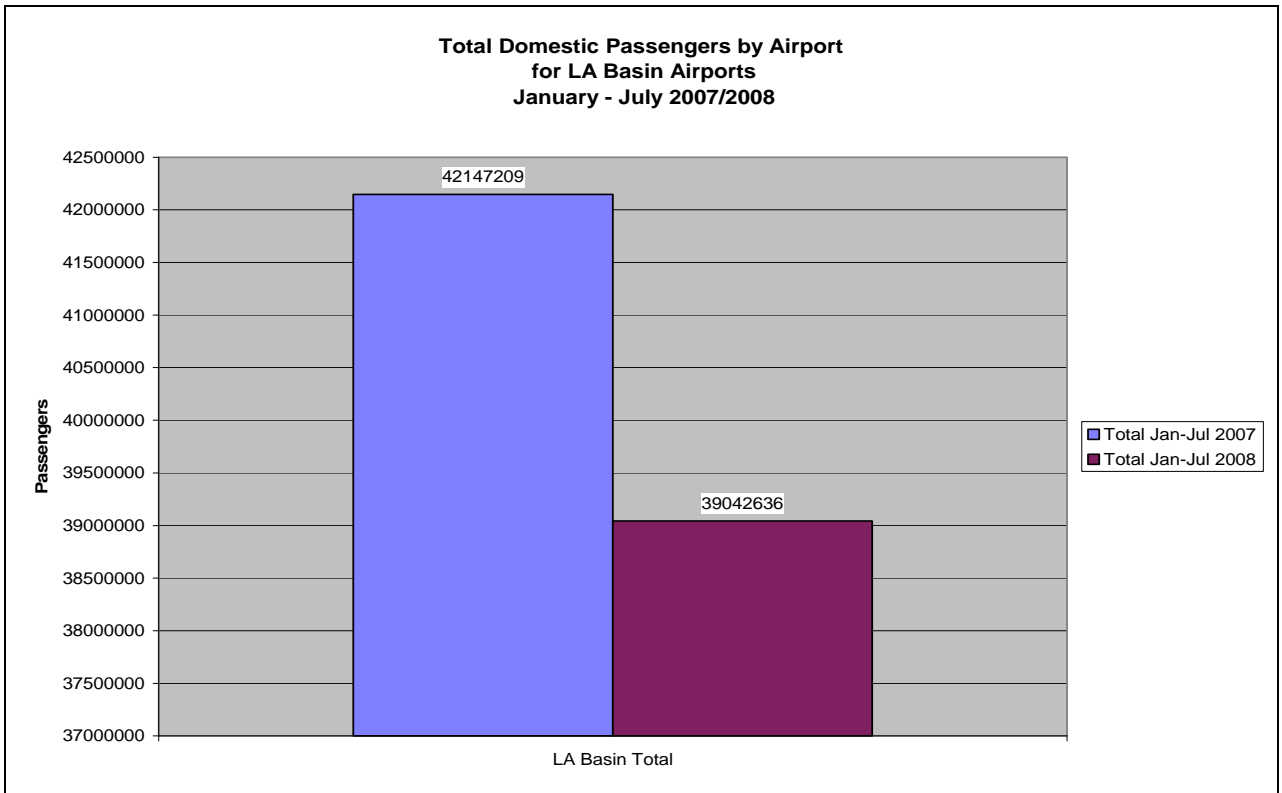
**Based on DOT Traffic Data**



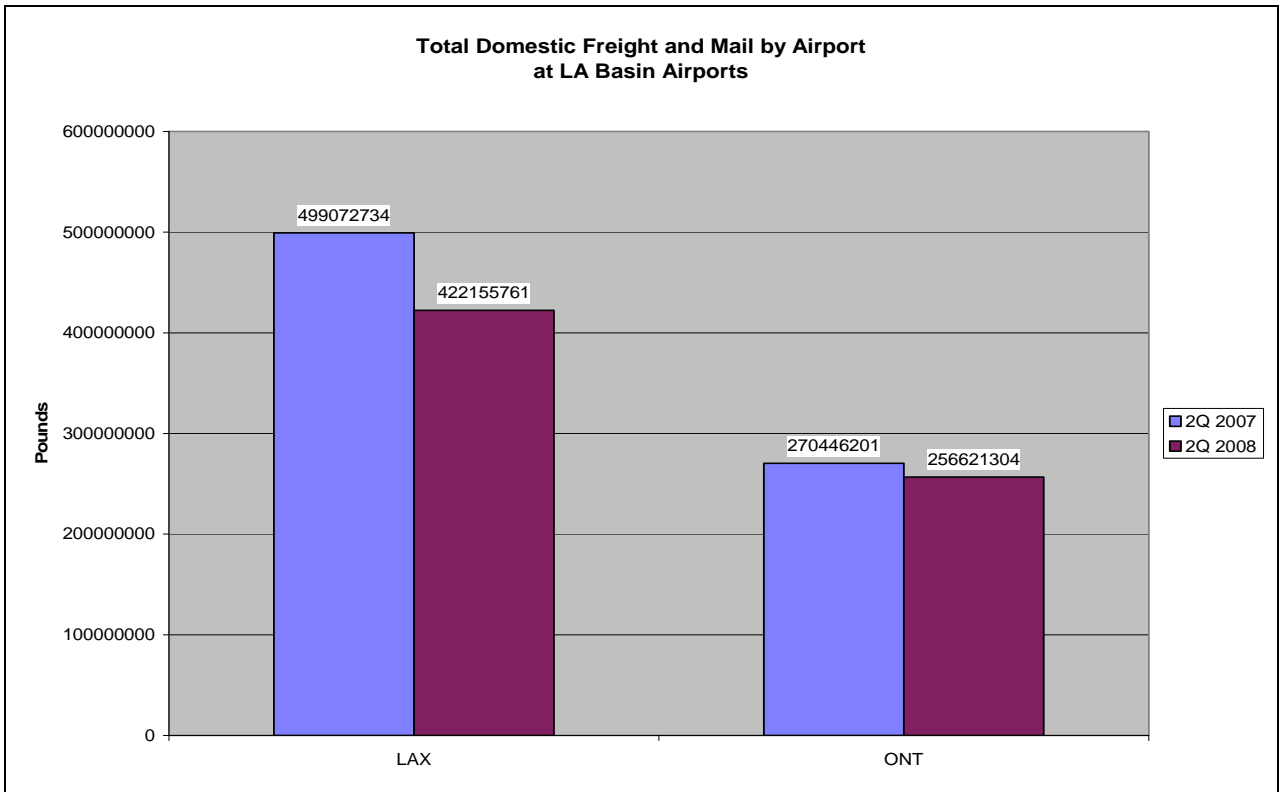
**Based on DOT Traffic Data**



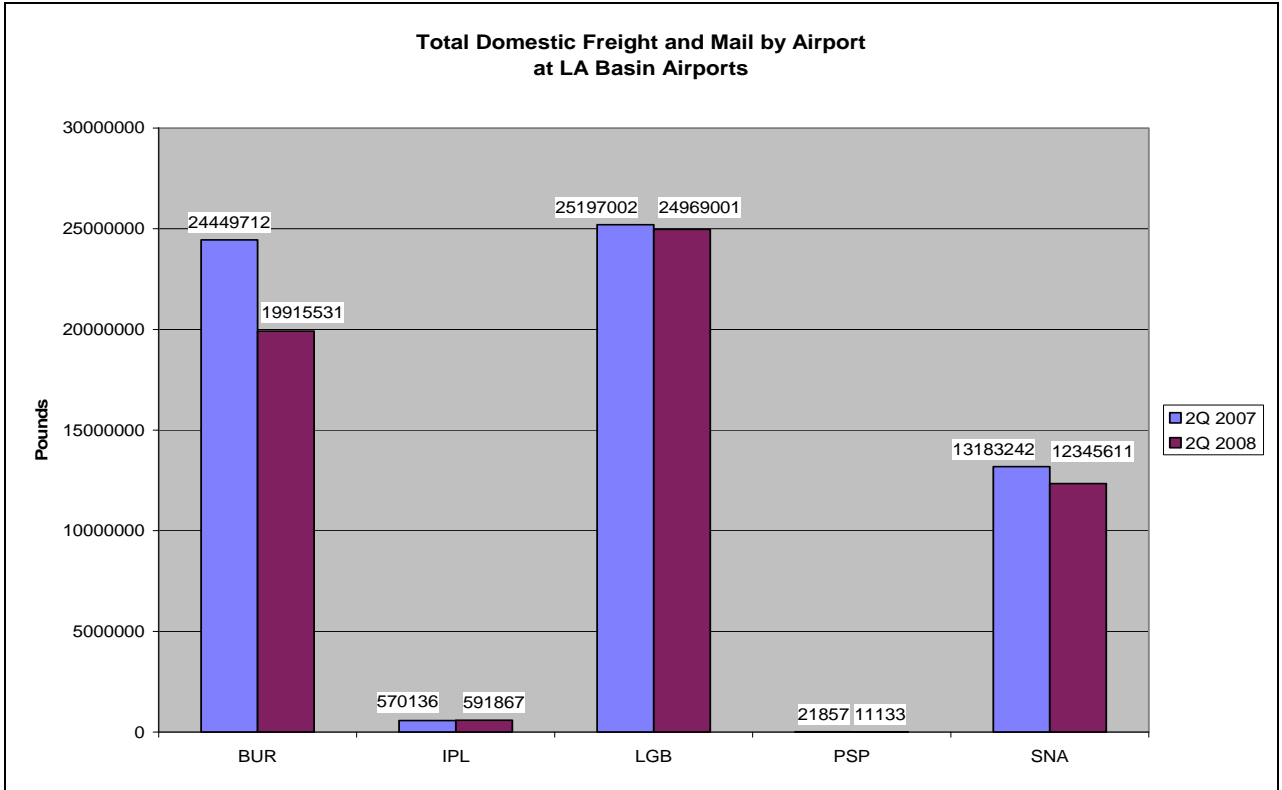
**Based on DOT Traffic Data**



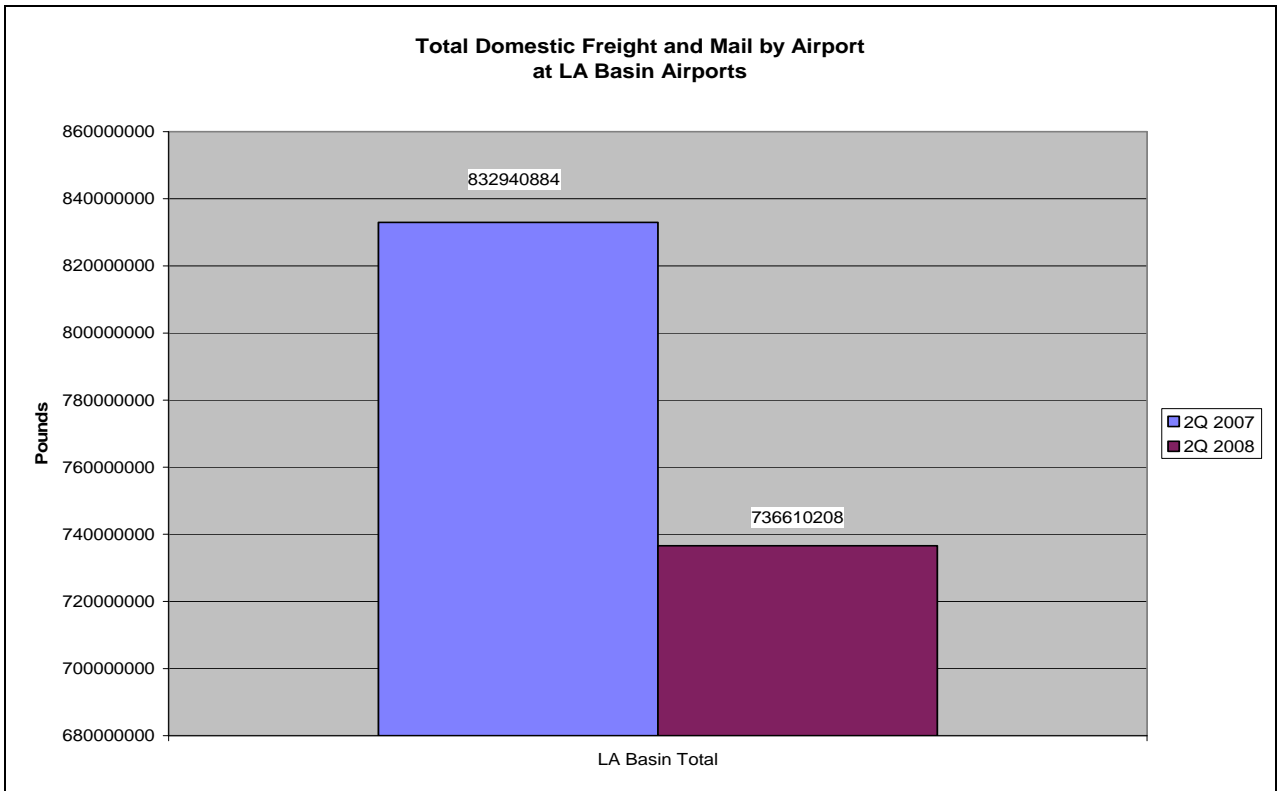
**Based on DOT Traffic Data**



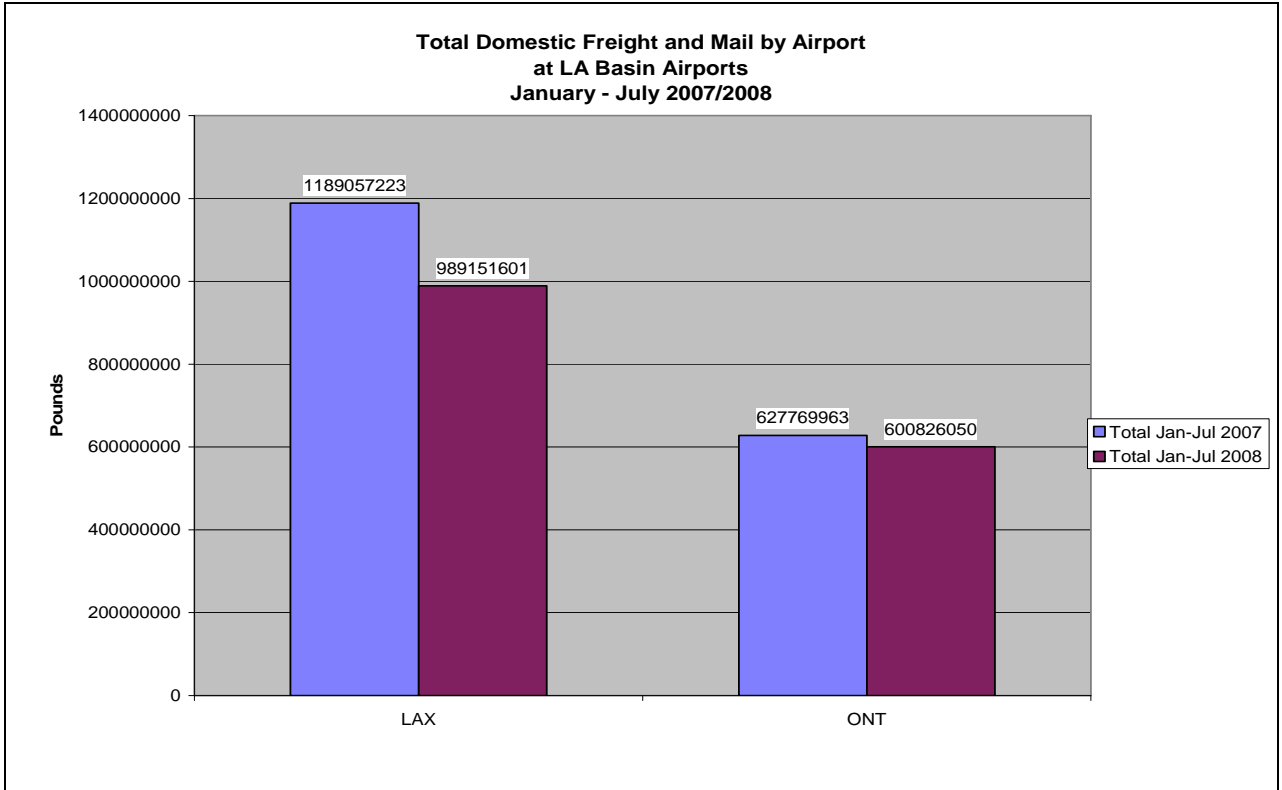
**Based on DOT Traffic Data**



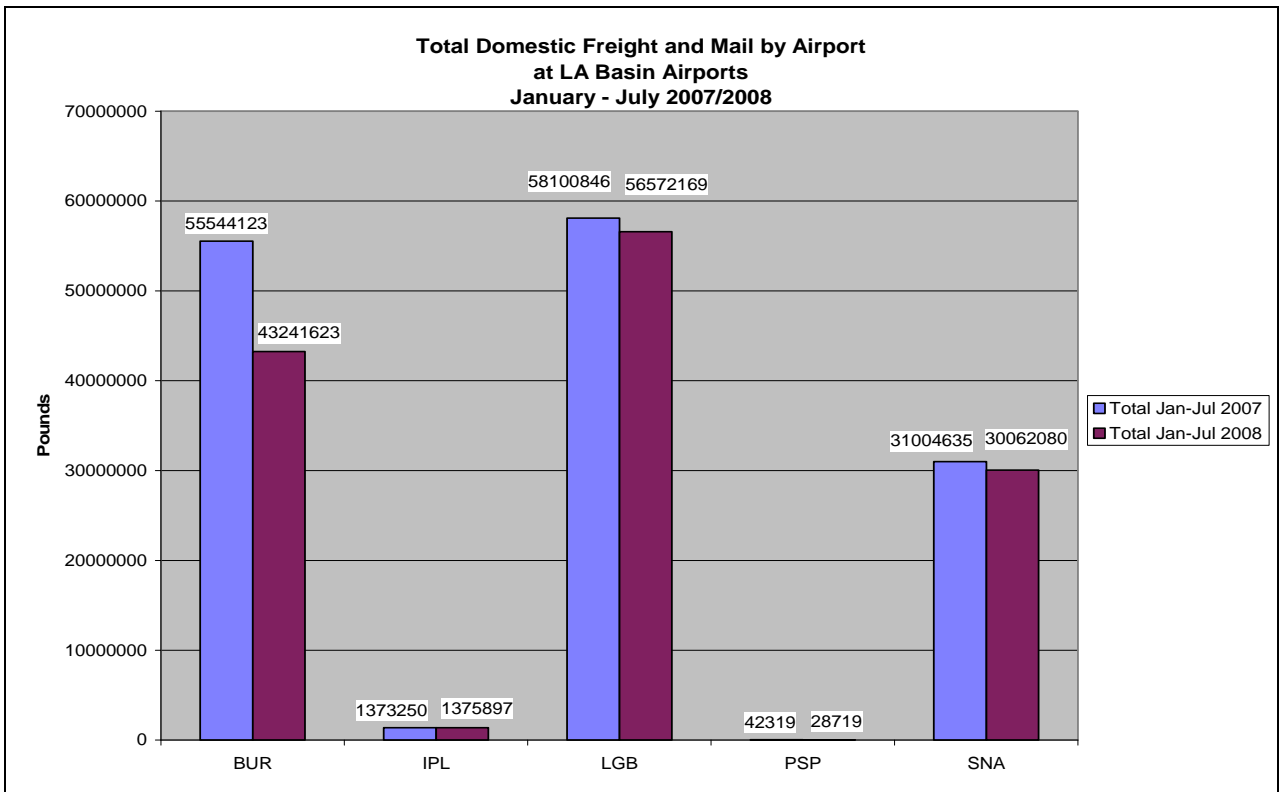
**Based on DOT Traffic Data**



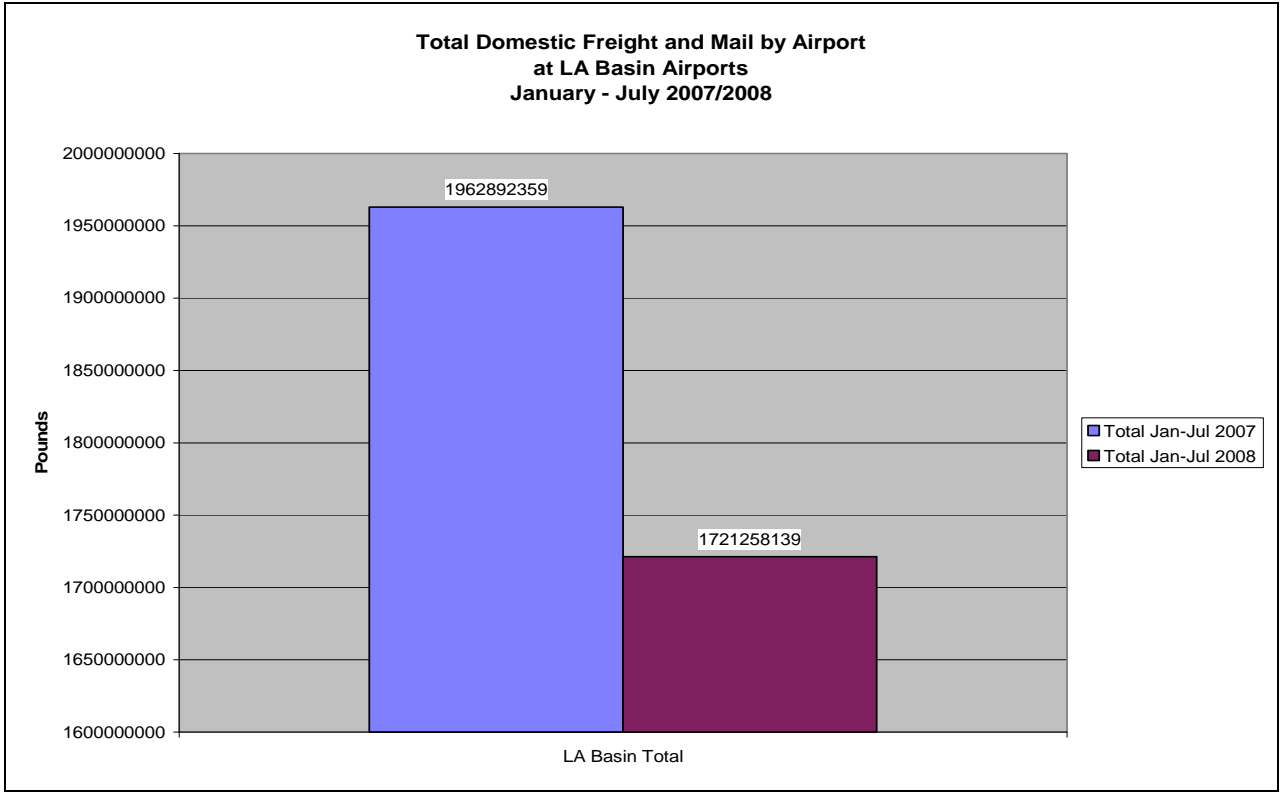
**Based on DOT Traffic Data**



Based on DOT Traffic Data



Based on DOT Traffic Data

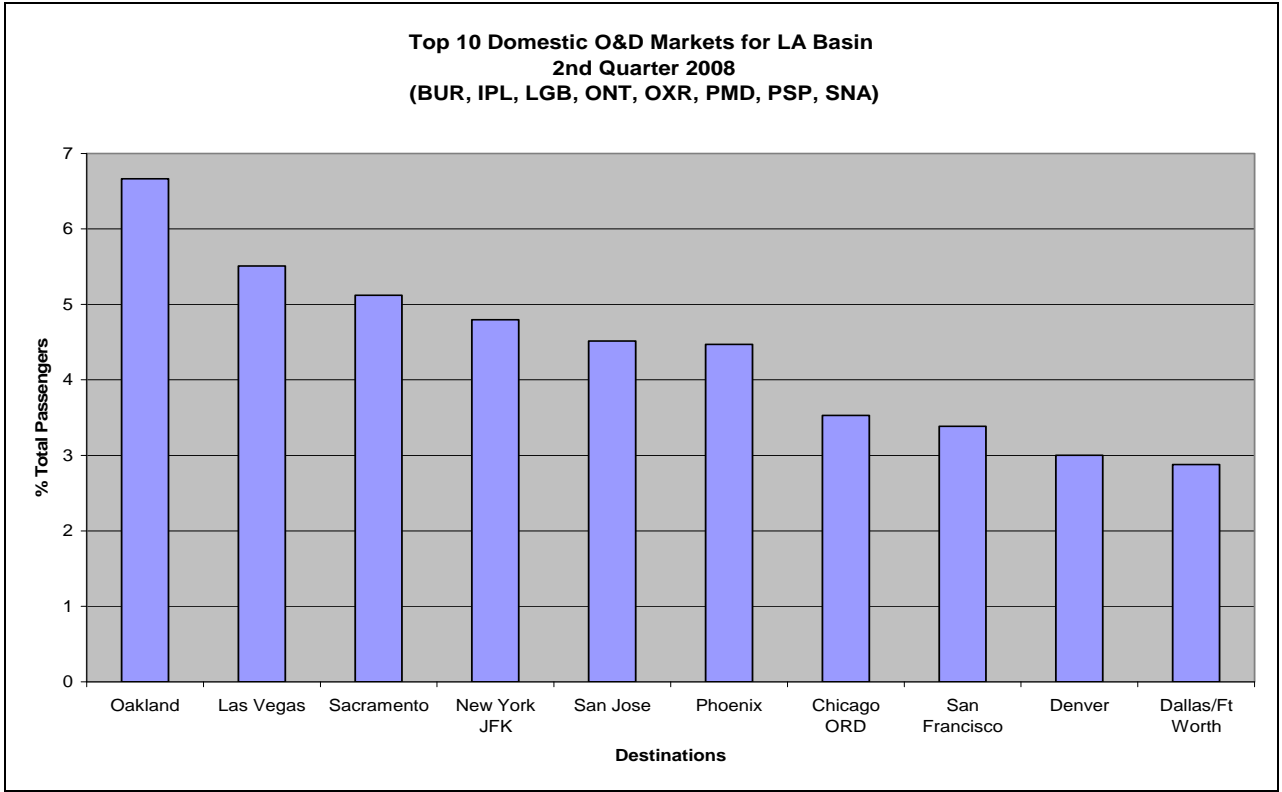


**Based on DOT Traffic Data**

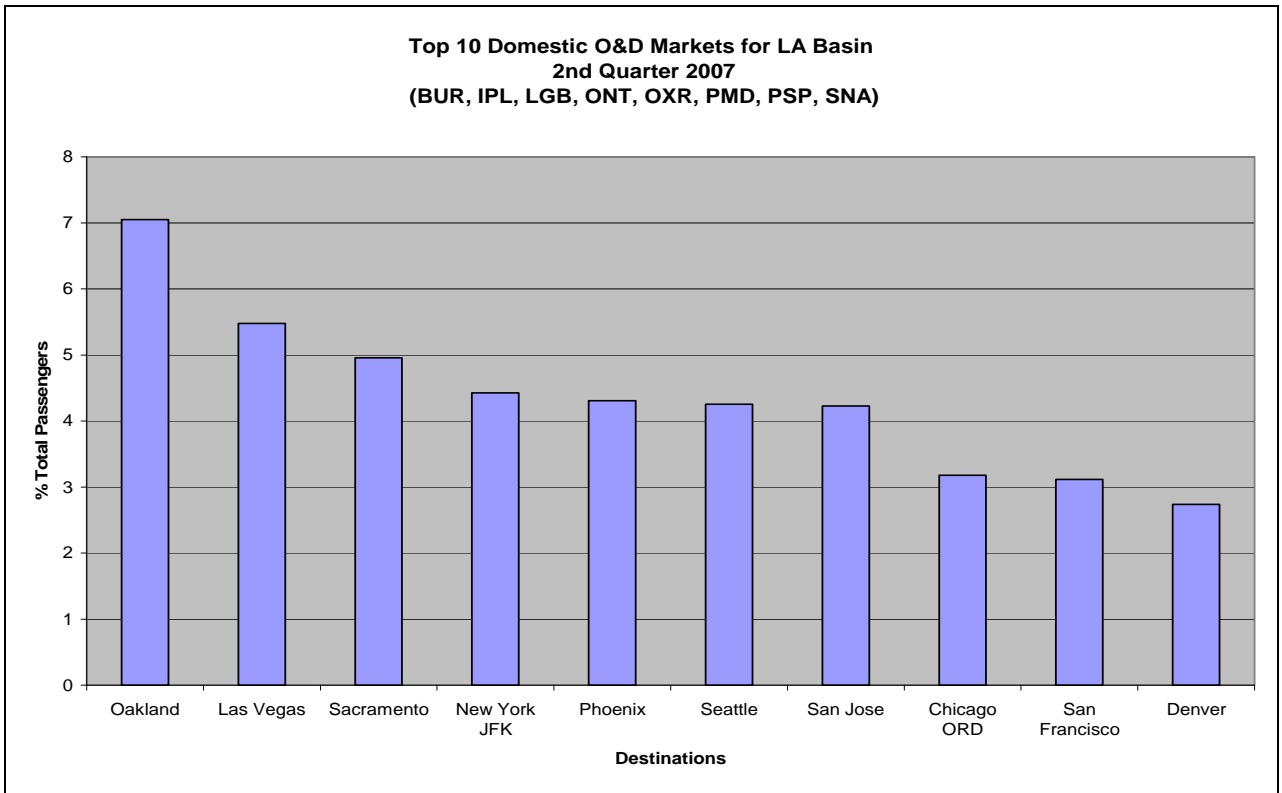
Total Available Seats  
by Departure Airport and Total LA Basin

Origin Airport	3rd Quarter 2007	3rd Quarter 2008
LAX	10,427,529	9,899,767
SNA	1,711,317	1,546,579
ONT	1,305,810	1,054,202
BUR	1,090,536	1,018,976
LGB	476,469	489,595
PSP	154,546	153,606
OXR	10,290	9,690
PMD	8,700	9,060
IPL	9,630	5,100
Total	15,395,530	14,387,378

**Based on Schedules Data**

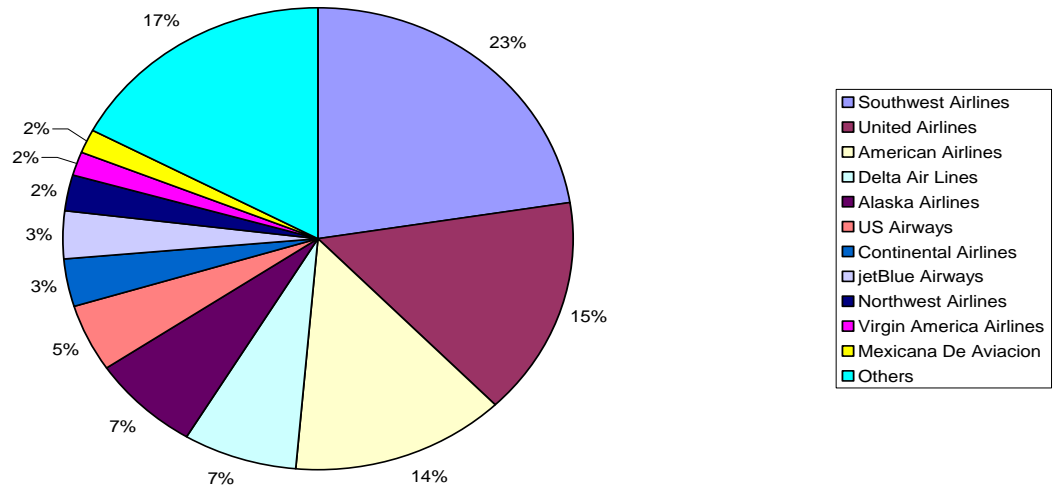


**Based on DOT Traffic**



**Based on DOT Traffic**

**Market Share by Departung Seats for LA Basin  
3rd Quarter 2008  
(BUR, IPL, LAX, LGB, ONT, OXR, PSP, SNA)**



**Based on Schedules Data**

Domestic Load Factors by Airport and Total LA Basin  
Narrowbody Aircraft

Origin Airport	Jan - Jul 2007	Jan - Jul 2008
BUR	70.26%	67.27%
LAX	78.22%	77.68%
LGB	77.39%	76.99%
ONT	72.21%	70.24%
PSP	78.96%	78.67%
SNA	76.51%	73.15%
Total	76.43%	75.04%

**Based on DOT Traffic Data**

Domestic Load Factors by Airport and Total LA Basin  
Regional and Turbo-Prop Aircraft

Origin Airport	Jan - Jul 2007	Jan - Jul 2008
BUR	78.39%	76.45%
IPL	54.15%	44.90%
LAX	72.58%	69.62%
LGB	78.16%	72.05%
ONT	62.37%	71.22%
OXR	53.24%	43.32%
PMD	26.23%	33.34%
PSP	74.40%	73.39%
SNA	70.21%	71.21%
Total	71.71%	70.24%

**Based on DOT Traffic Data**

Domestic Load Factors by Airport and Total LA Basin  
Widebody Aircraft

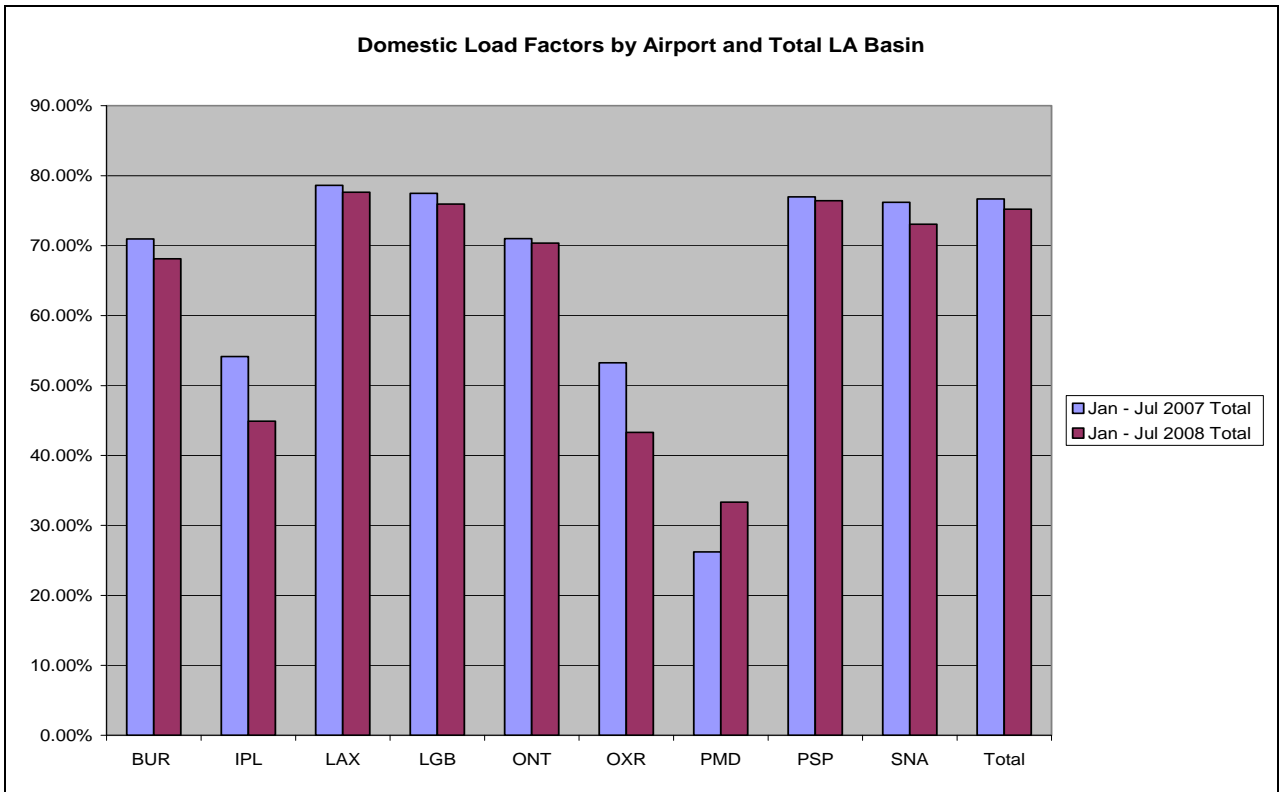
Origin Airport	Jan - Jul 2007	Jan - Jul 2008
LAX	86.61%	85.90%
LGB	74.26%	0.00%
ONT	60.55%	92.81%
PSP	0.00%	64.71%
Total	86.60%	85.90%

**Based on DOT Traffic Data**

## Domestic Load Factors by Airport and Total LA Basin

Origin Airport	Jan - Jul 2007	Jan - Jul 2008
BUR	70.95%	68.11%
IPL	54.15%	44.90%
LAX	78.62%	77.62%
LGB	77.47%	75.94%
ONT	71.02%	70.38%
OXR	53.24%	43.32%
PMD	26.23%	33.34%
PSP	76.96%	76.40%
SNA	76.17%	73.05%
Total	76.67%	75.20%

Based on DOT Traffic Data



**Based on DOT Traffic Data**

New Non-Stop Routes from LA Basin Airports  
Comparing  
2nd Quarter 2008 to 3rd Quarter 2008

Origin Airport	Destination Airport	Operating Carrier
LAX	Hermosillo Mexico	Aeromexico
LAX	La Paz Mexico	Horizon Air
LAX	Los Cabos Mexico	United for TED
LAX	Milwaukee	Northwest Airlines
LAX	Prescott	Horizon Air
ONT	Prescott	Great Lakes Aviation
ONT	Seattle/Tacoma	Horizon Air
ONT	Visalia	Great Lakes Aviation

**Based on Schedules Data**

# New Non-Stop Routes from LA Basin Airports Comparing 2nd Quarter 2008 to 3rd Quarter 2008



Lost Non-Stop Routes from LA Basin Airports  
Comparing  
2nd Quarter 2008 to 3rd Quarter 2008

Origin Airport	Destination Airport	Operating Carrier
LAX	Hermosillo Mexico	Aeromexico Connect
LAX	Honolulu	ATA Airlines
LAX	Kahului	ATA Airlines
LAX	Las Vegas(Intl)	United Airlines
LAX	Los Mochis Mexico	ExpressJet Airlines
LAX	Modesto	UA EXP/Skywest
LAX	Nadi Fiji	Air New Zealand
LAX	New York(Kennedy)	Air Tahiti Nui
LAX	Wichita	UA EXP/Skywest
ONT	Denver(Intl)	United Airlines
PSP	Calgary Canada	WestJet
PSP	Chicago(O'Hare)	United Airlines
PSP	Denver(Intl)	United Airlines
PSP	Edmonton(Intl) Canada	WestJet
PSP	Houston(G.Bush Intl)	Expressjet/CO Express
PSP	Minneapolis/St. Paul	Northwest Airlines
PSP	Portland	Alaska Airlines
PSP	Vancouver Canada	WestJet
SNA	Honolulu	Aloha Airlines
SNA	Kahului	Aloha Airlines
SNA	Oakland	Alaska Airlines
SNA	Reno	Aloha Airlines

Based on Schedules Data

Changes in Aircraft Type at LA Basin Airports  
Comparing  
2nd Quarter 2008 to 3rd Quarter 2008

Airport	New Aircraft	Lost Aircraft
BUR	BOEING(DOUGLAS) MD-83	
LAX	EMBRAER 170/175/190/195	
ONT	BEEHCRAFT 1900 AIRLINER	
ONT	MCDONNELL DOUGLAS MD-90	
OXR		BEEHCRAFT (LIGHT AIRCRAFT)
PSP		EMBRAER 170/175/190/195
PSP		EMBRAER 190
PSP		AIRBUS INDUSTRIE A319
PSP		AIRBUS INDUSTRIE A320
PSP		BOEING 737-700 (WINGLETS)
PSP		BOEING 737-800
PSP		BOEING 737-900
SNA		BOEING 737-400
SNA	AIRBUS INDUSTRIE A318	
SNA	BOEING 737-500	
PMD	EMBRAER 120 BRASILIA	

Based on Schedules Data

Changes in Airlines at LA Basin Airports  
Comparing  
2nd Quarter 2008 to 3rd Quarter 2008

Airport	New Airline	Lost Airline
BUR		TZ - ATA Airlines
LAX		BN - Forward Air
LAX		TZ - ATA Airlines
LAX	K4 - Kalitta Air	
ONT	ZK - Great Lakes Aviation	
OXR		4X - Mercury World Cargo
PSP		AC - Air Canada
PSP		CO - Continental Airlines
PSP		NW - Northwest Airlines
PSP		SY - Sun Country Airlines
PSP		WS - WestJet
SNA		AQ - Aloha Airlines

Based on Schedules Data