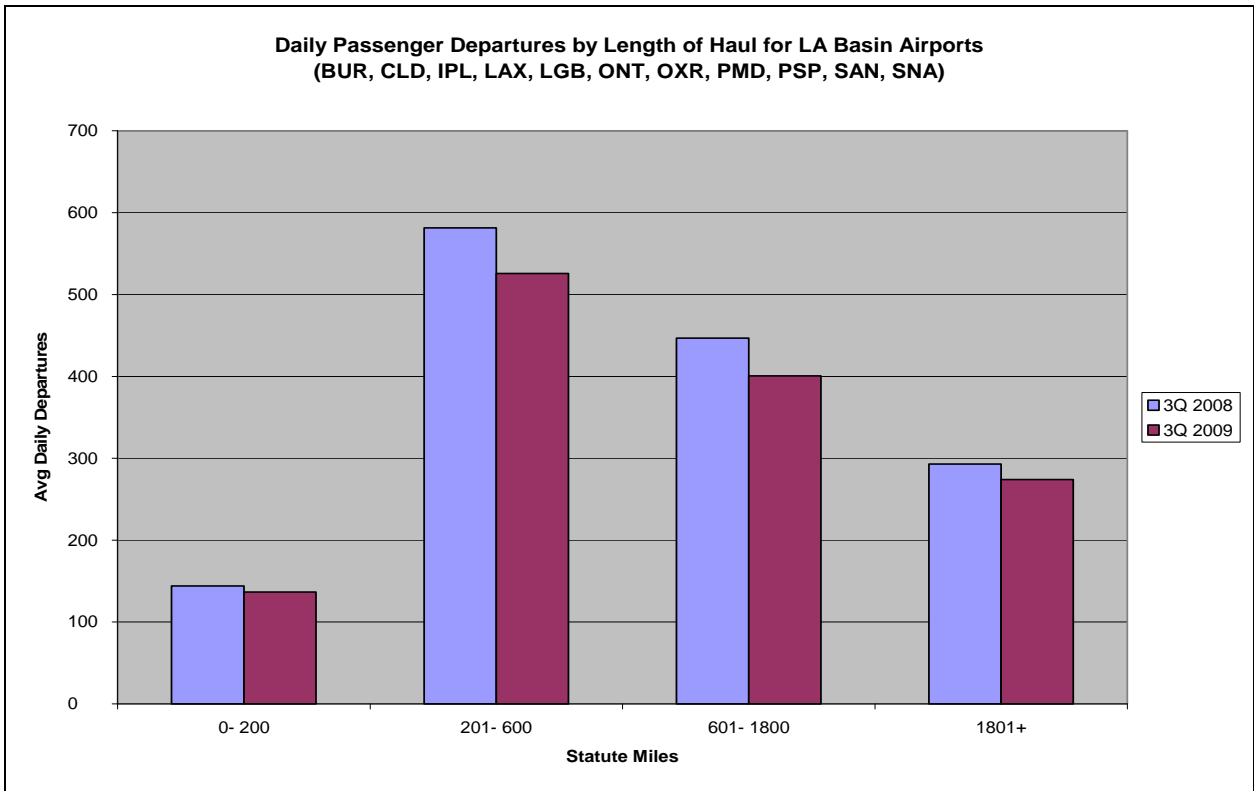


Quarterly Reports for
Southern California Association of
Governments (SCAG)

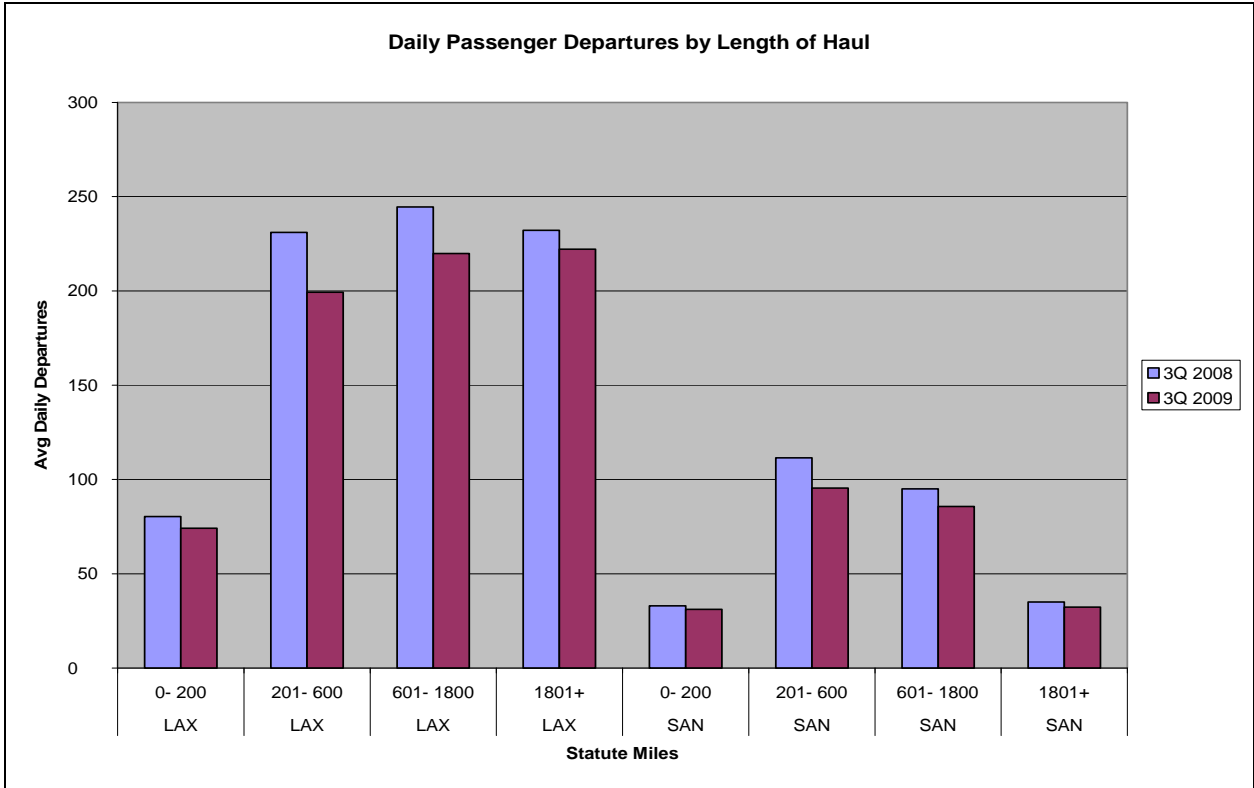
Produced by
OAG Aviation

3rd Quarter 2009

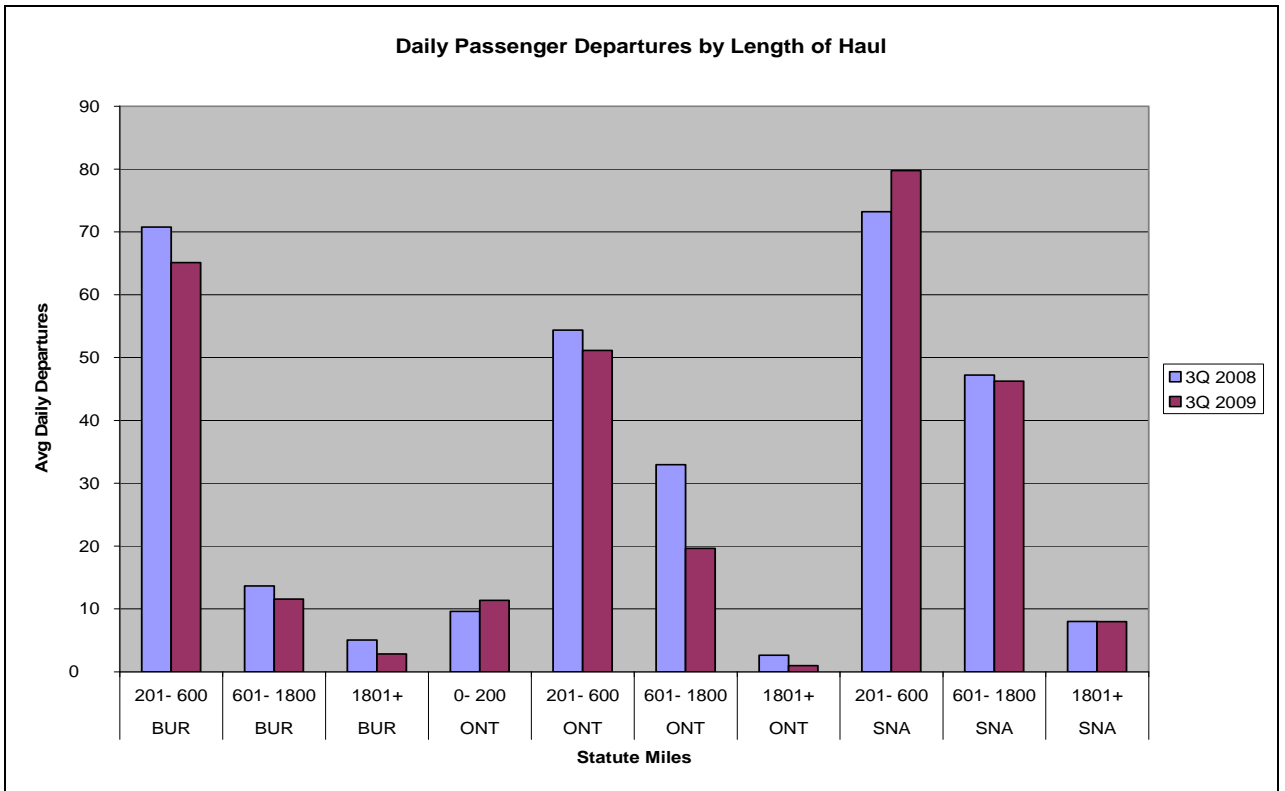


Based on Schedules Data

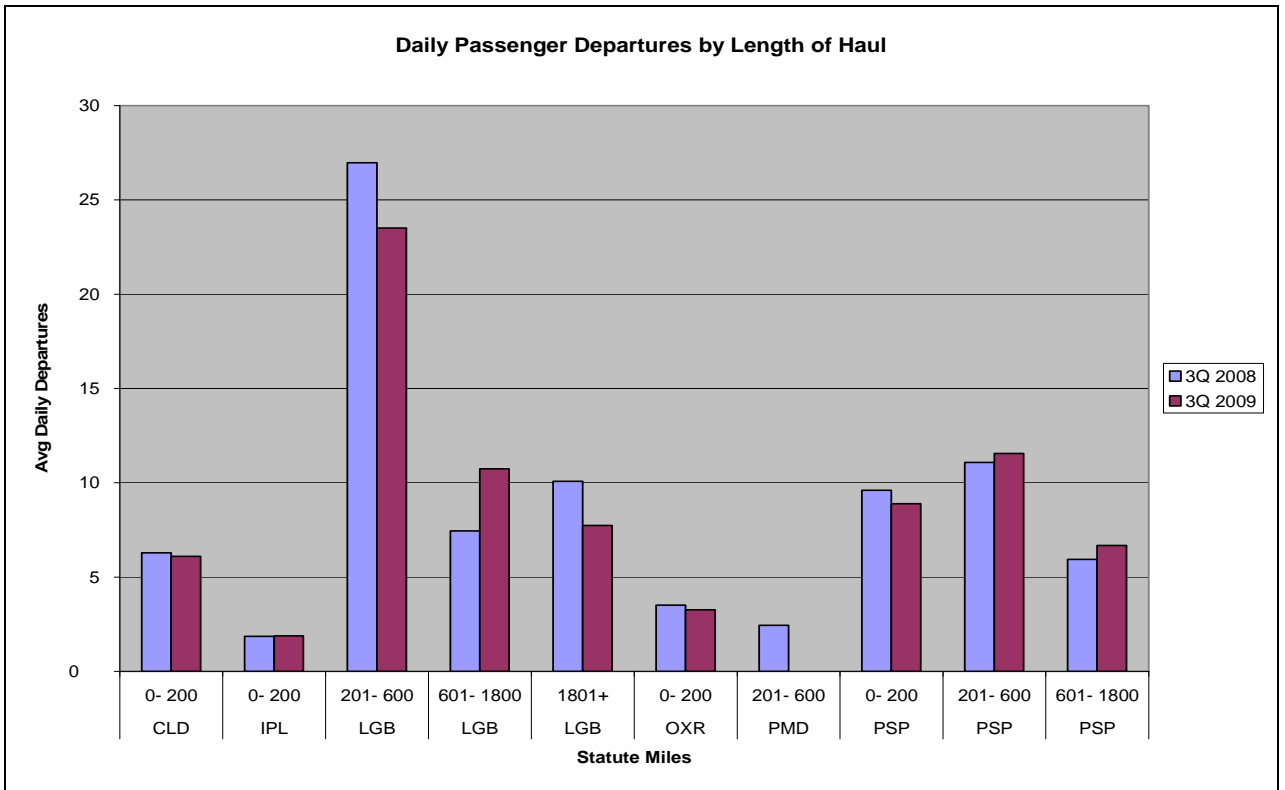
- BUR** – Burbank
- CLD** - Carlsbad (Palomar)
- IPL** - El Centro/Imperial
- LAX** - Los Angeles (Intl)
- LGB** - Long Beach
- ONT** - Ontario
- OXR** – Oxnard/Ventura
- PMD** - Palmdale/Lancaster
- PSP** - Palm Springs
- SAN** - San Diego (Intl)
- SNA** - Santa Ana (J. Wayne)



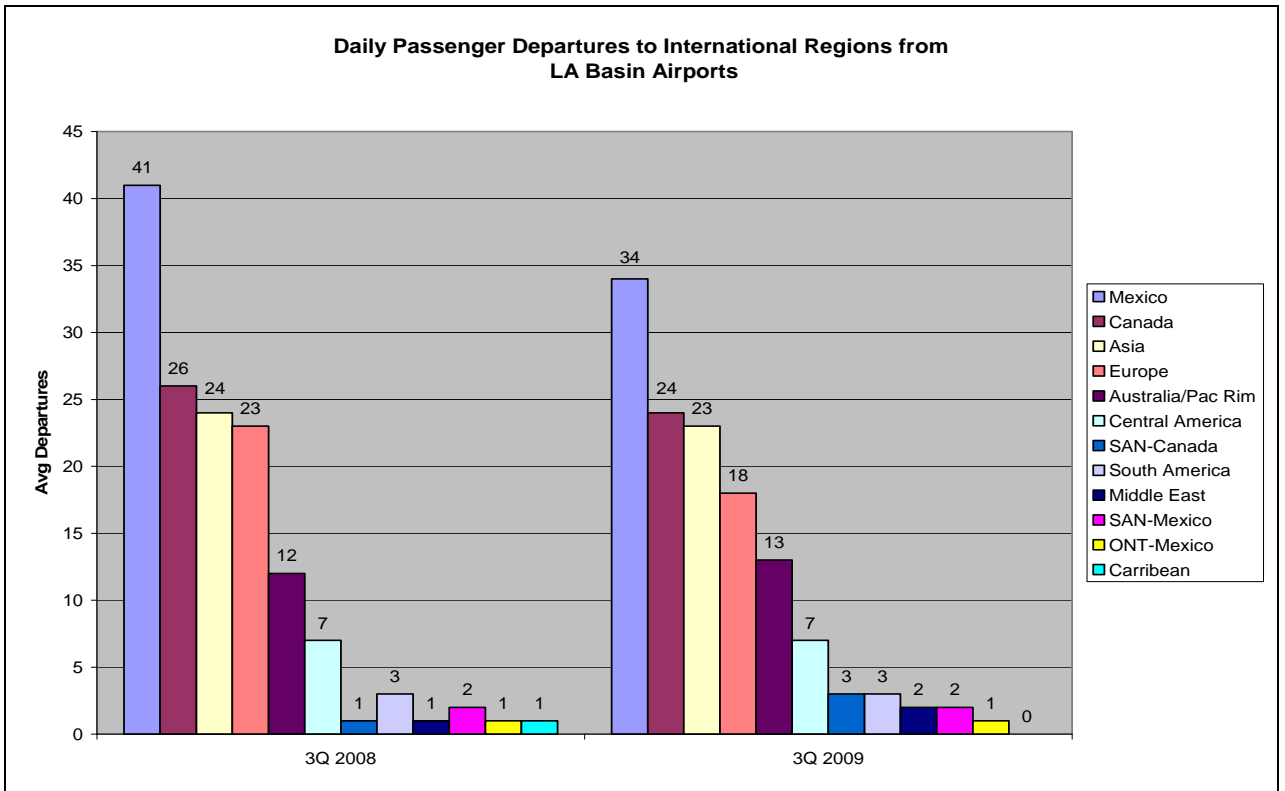
Based on Schedules Data



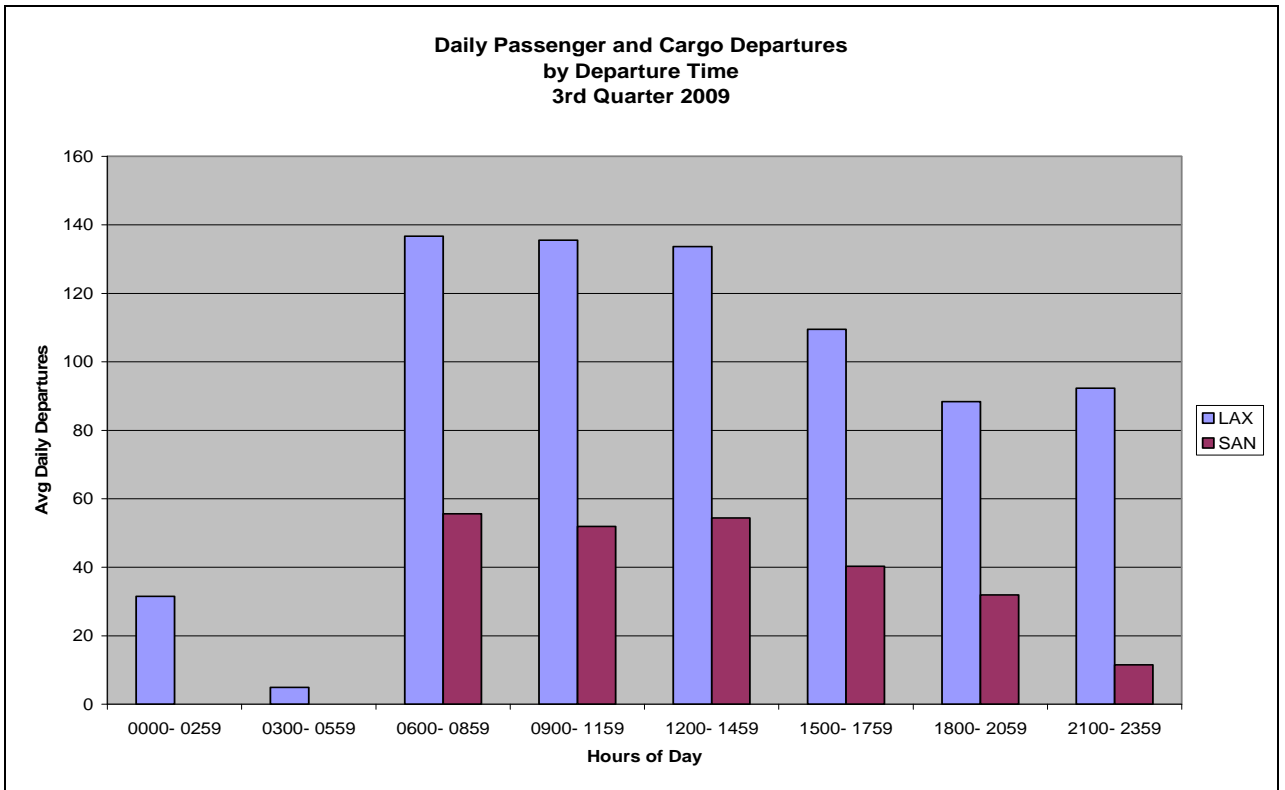
Based on Schedules Data



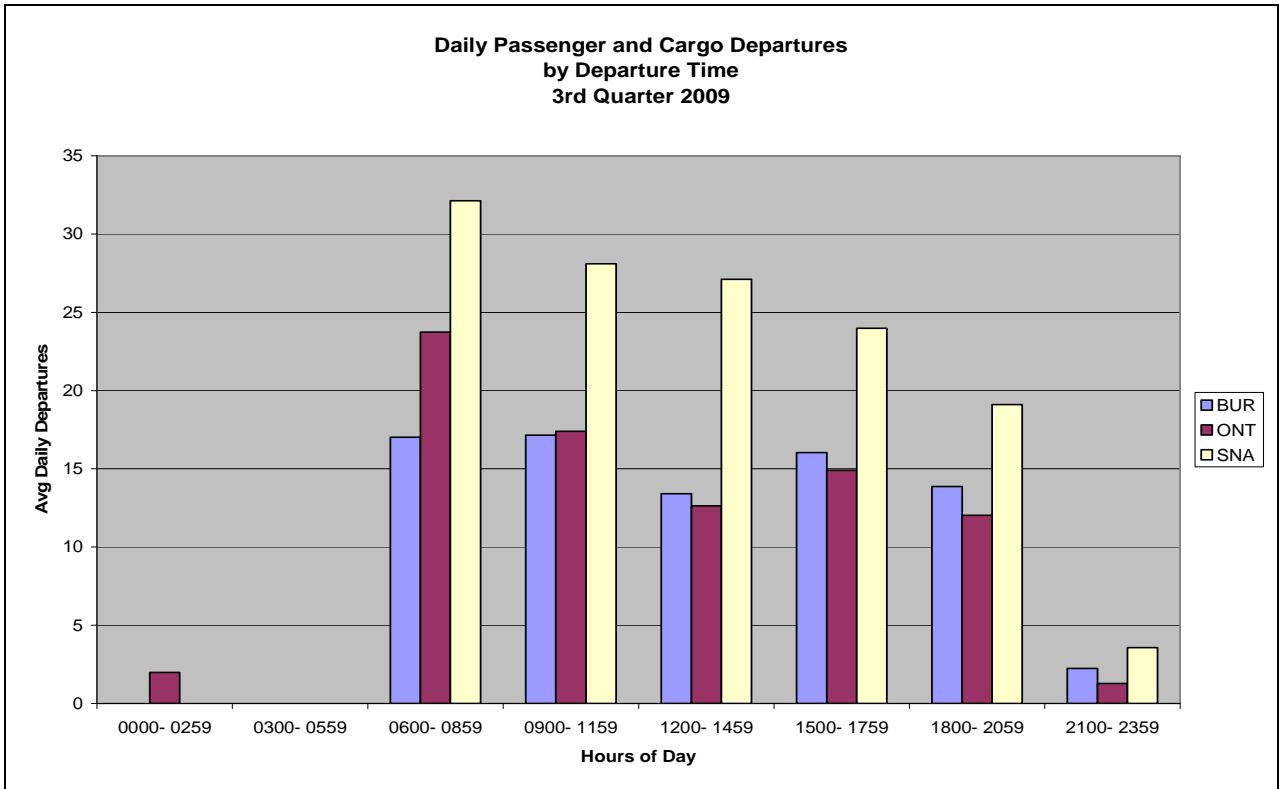
Based on Schedules Data



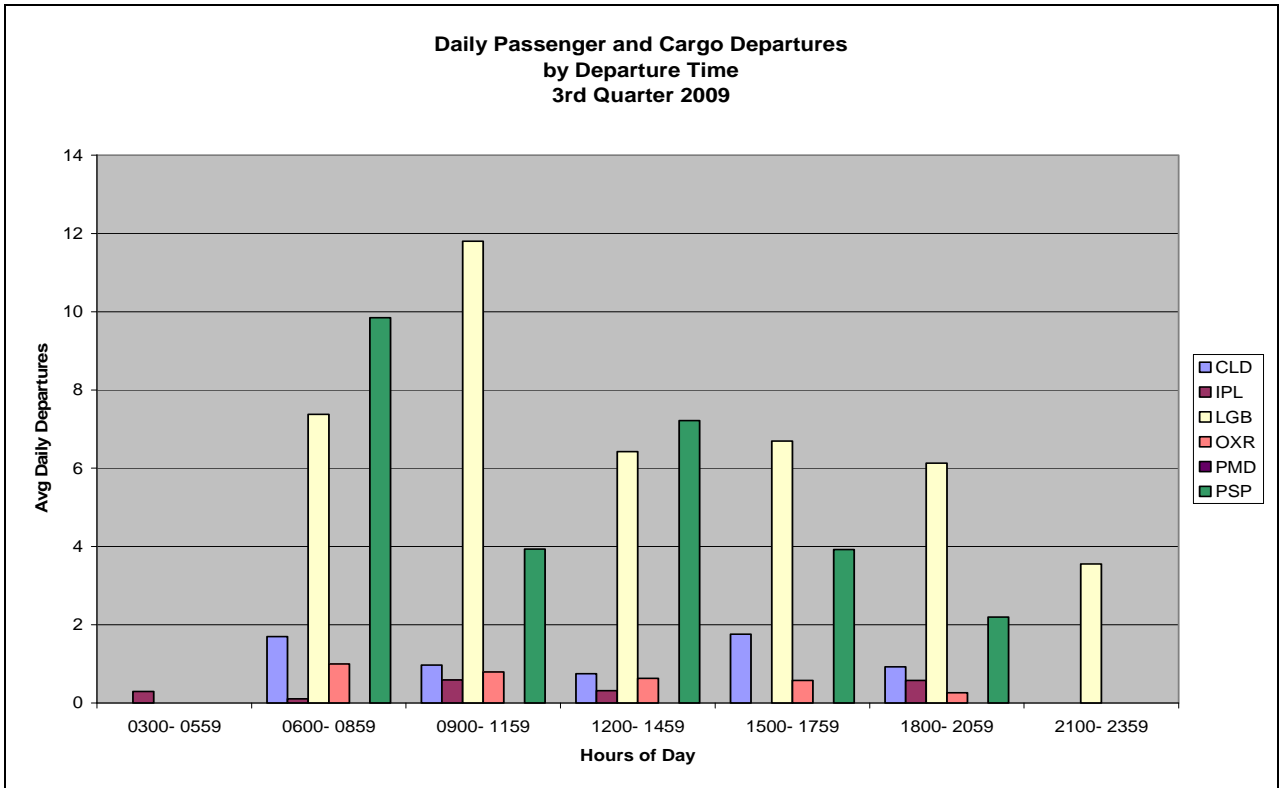
Based on Schedules Data



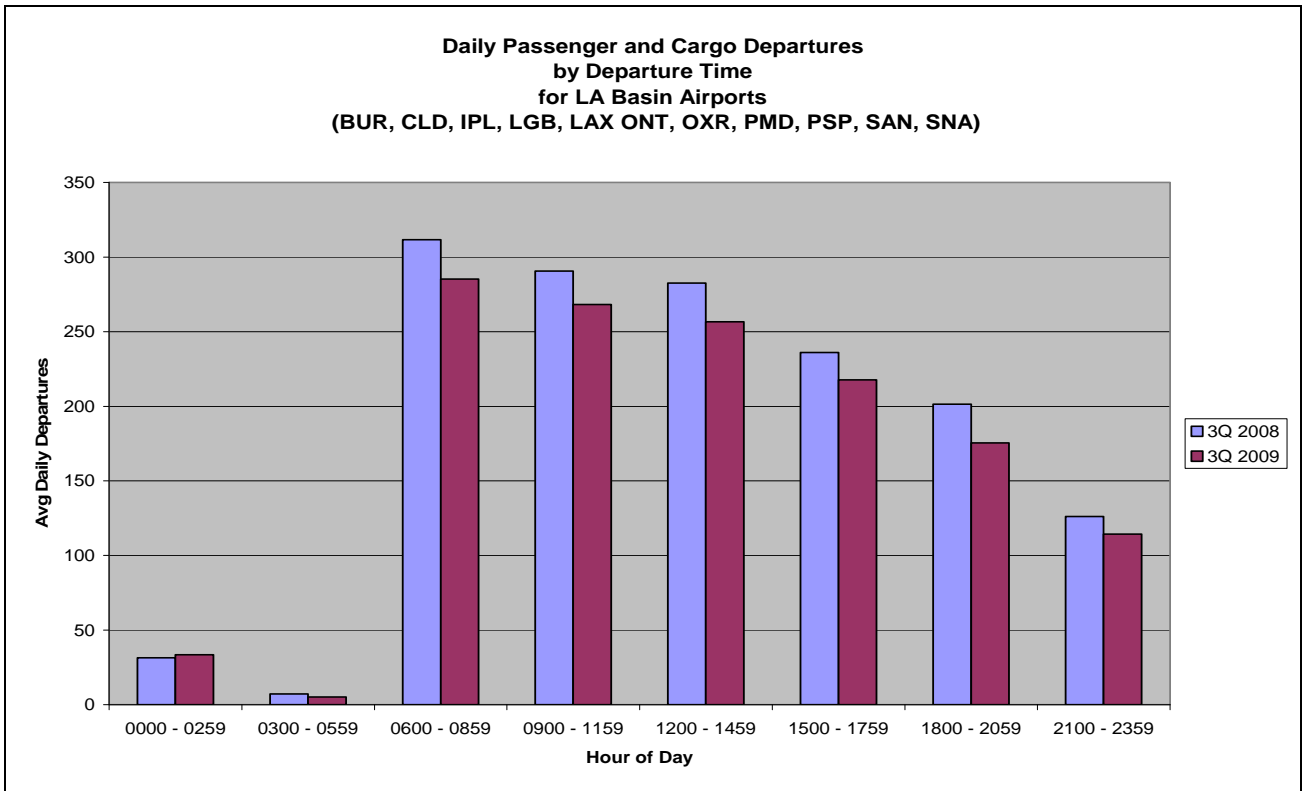
Based on Schedules Data



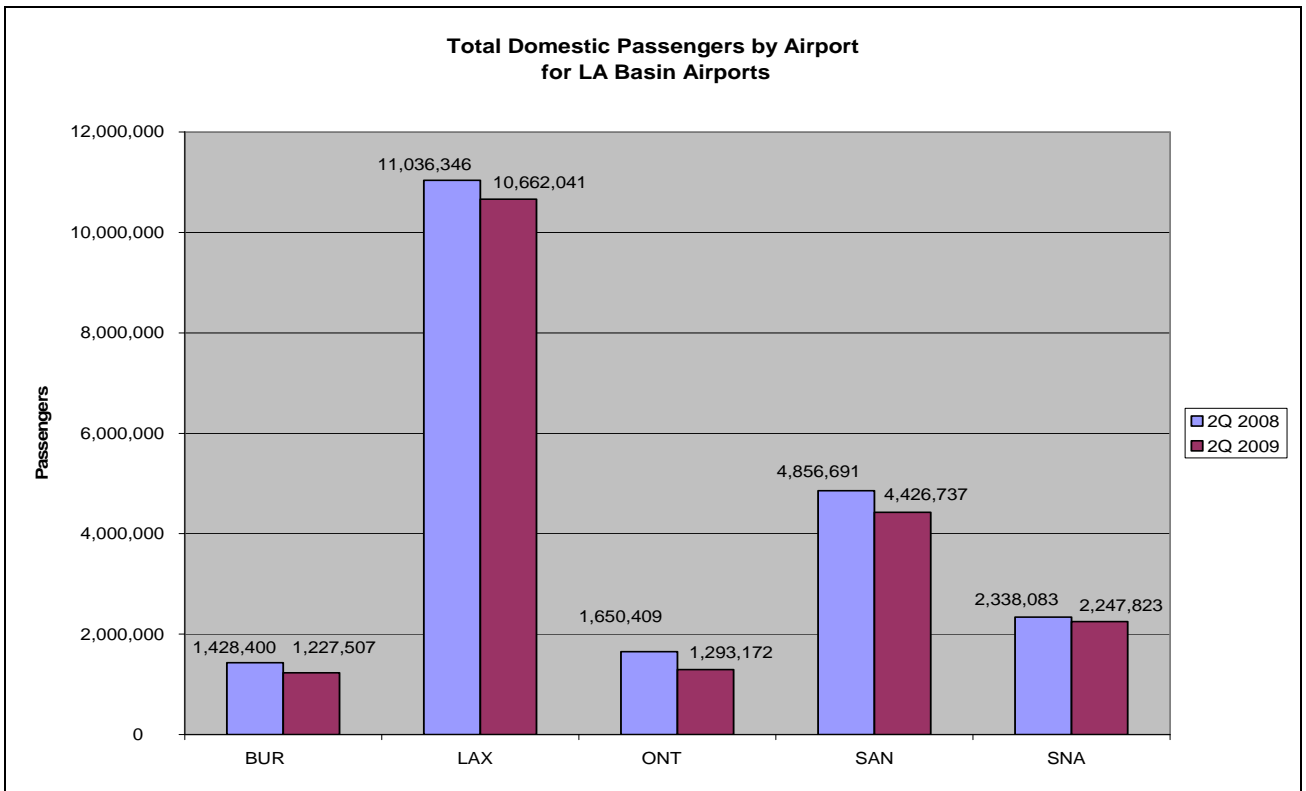
Based on Schedules Data



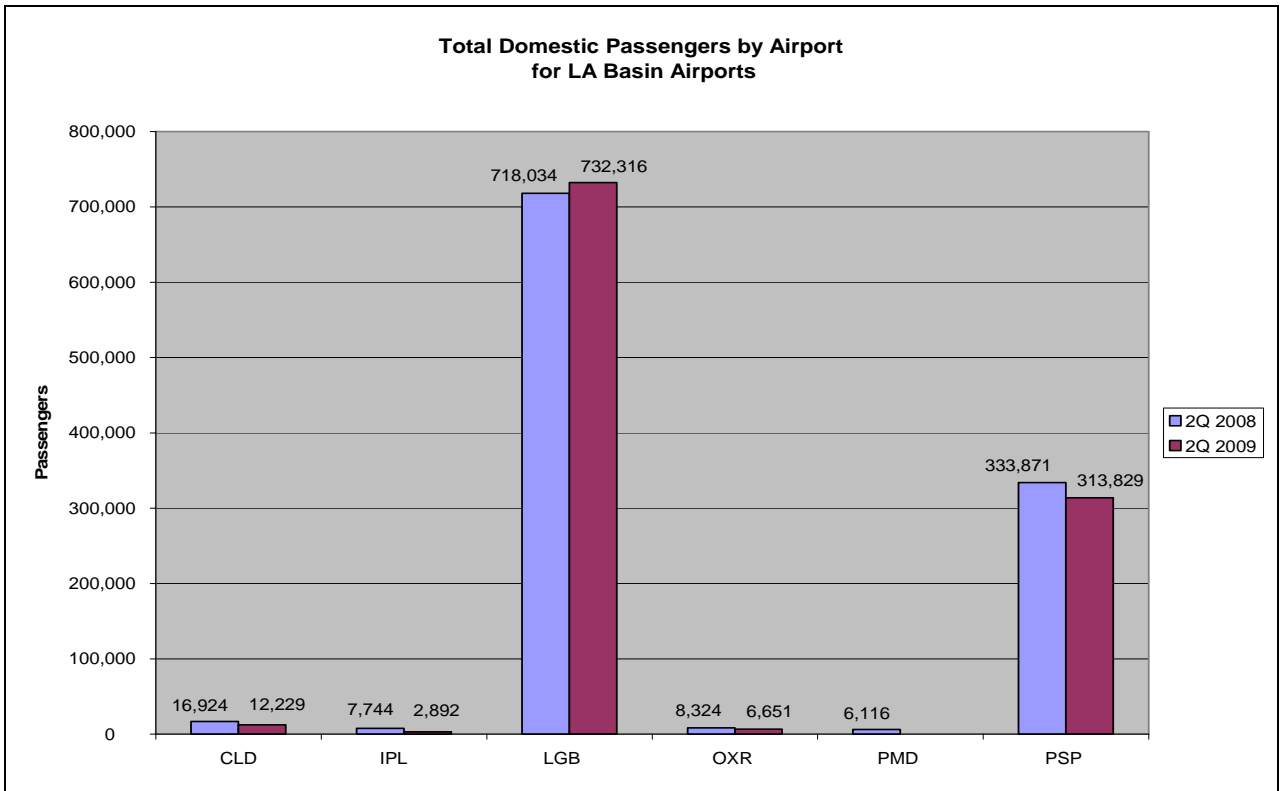
Based on Schedules Data



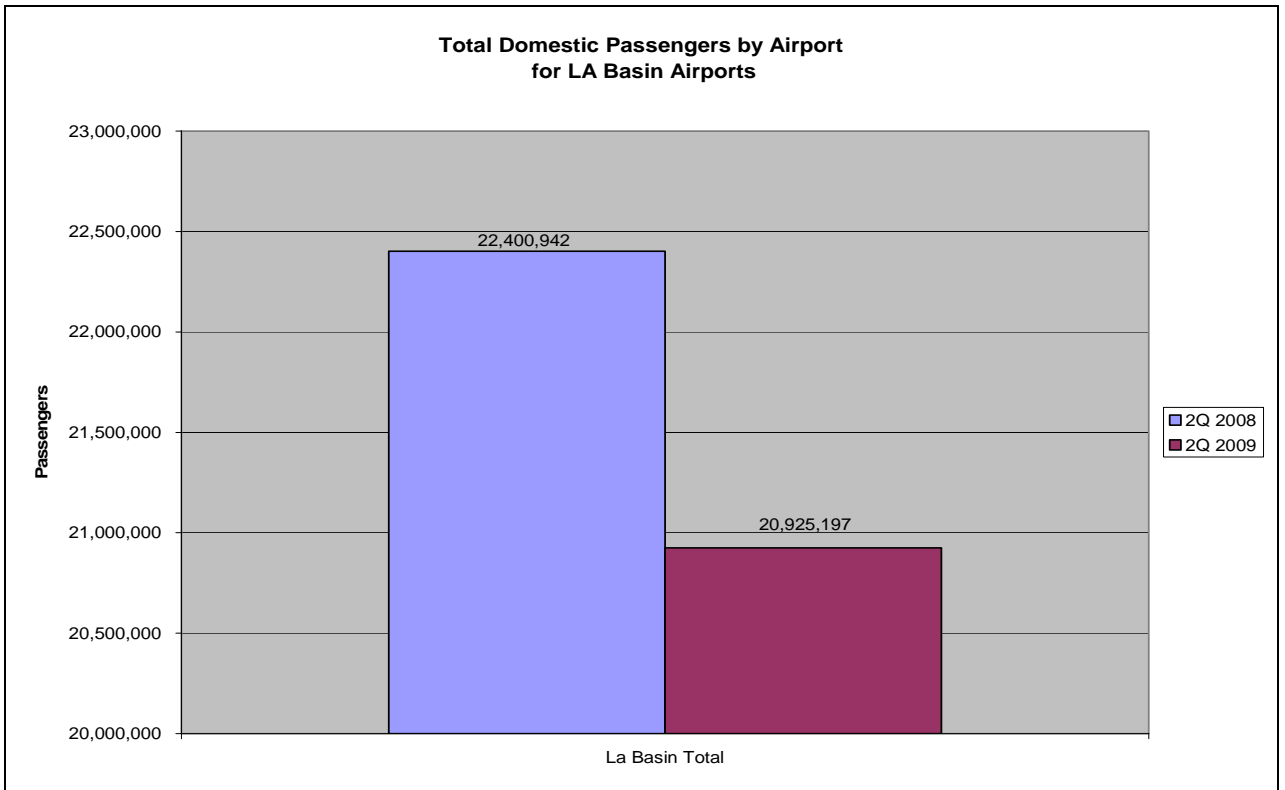
Based on Schedules Data



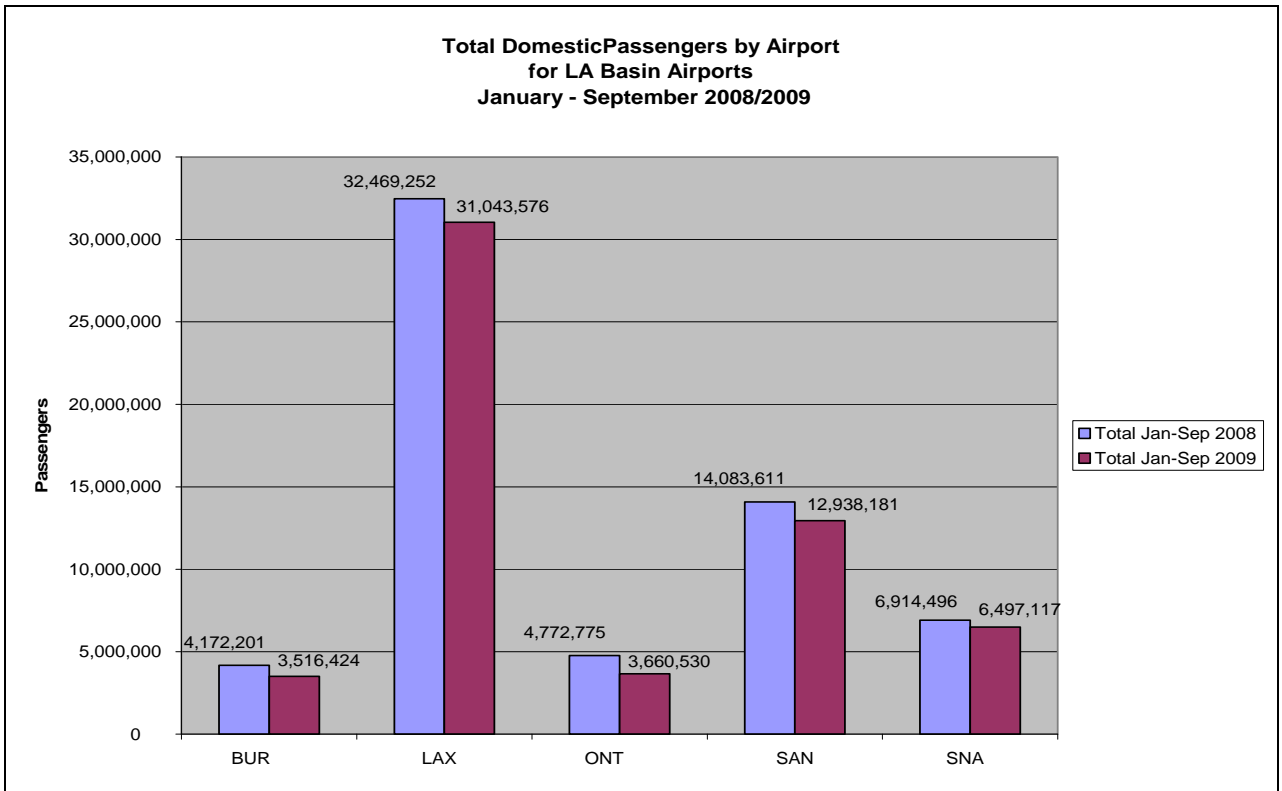
Based on DOT Traffic Data



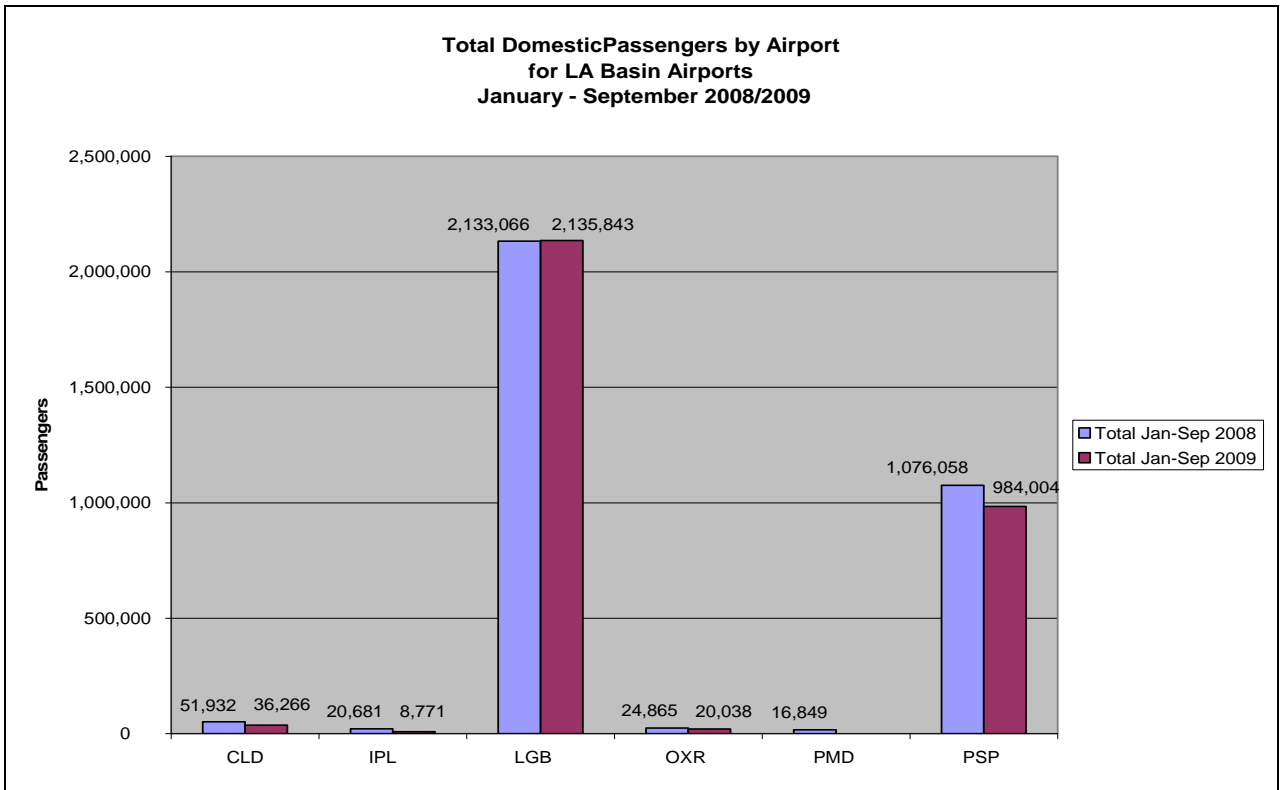
Based on DOT Traffic Data



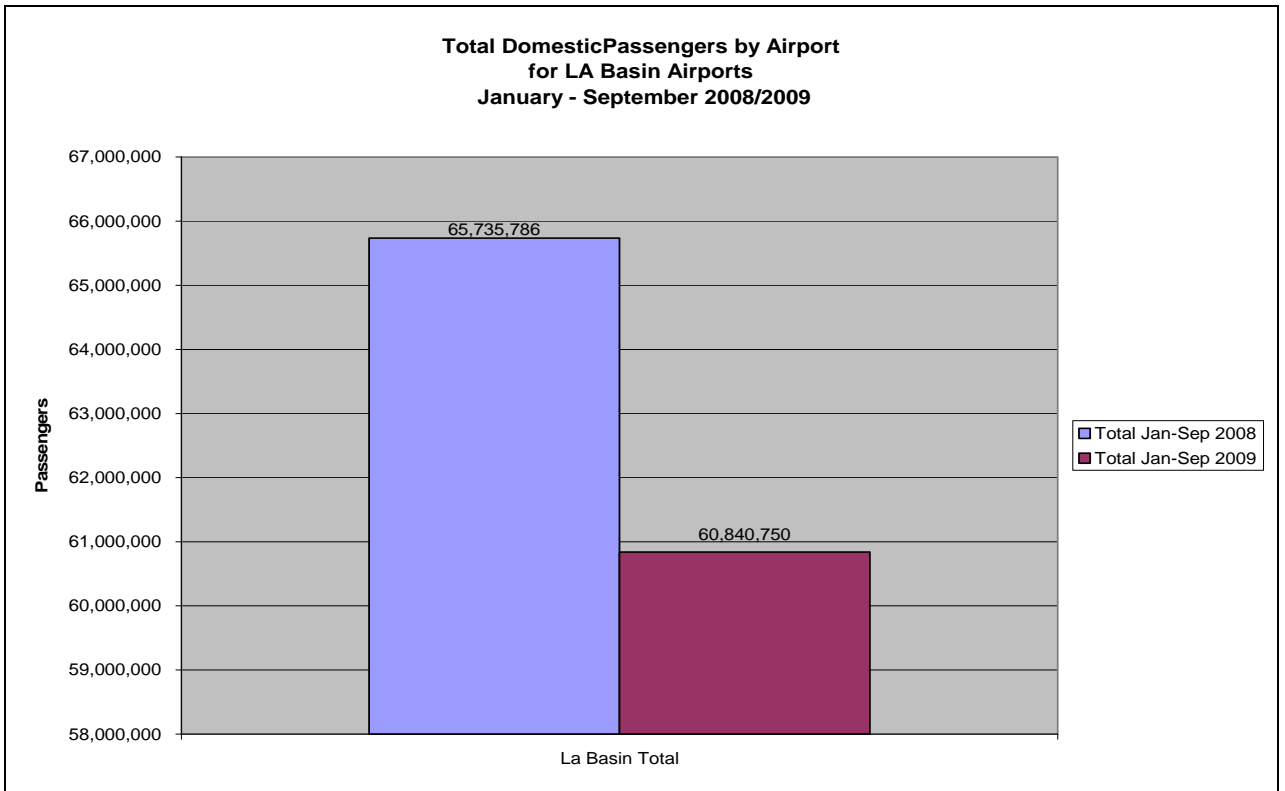
Based on DOT Traffic Data



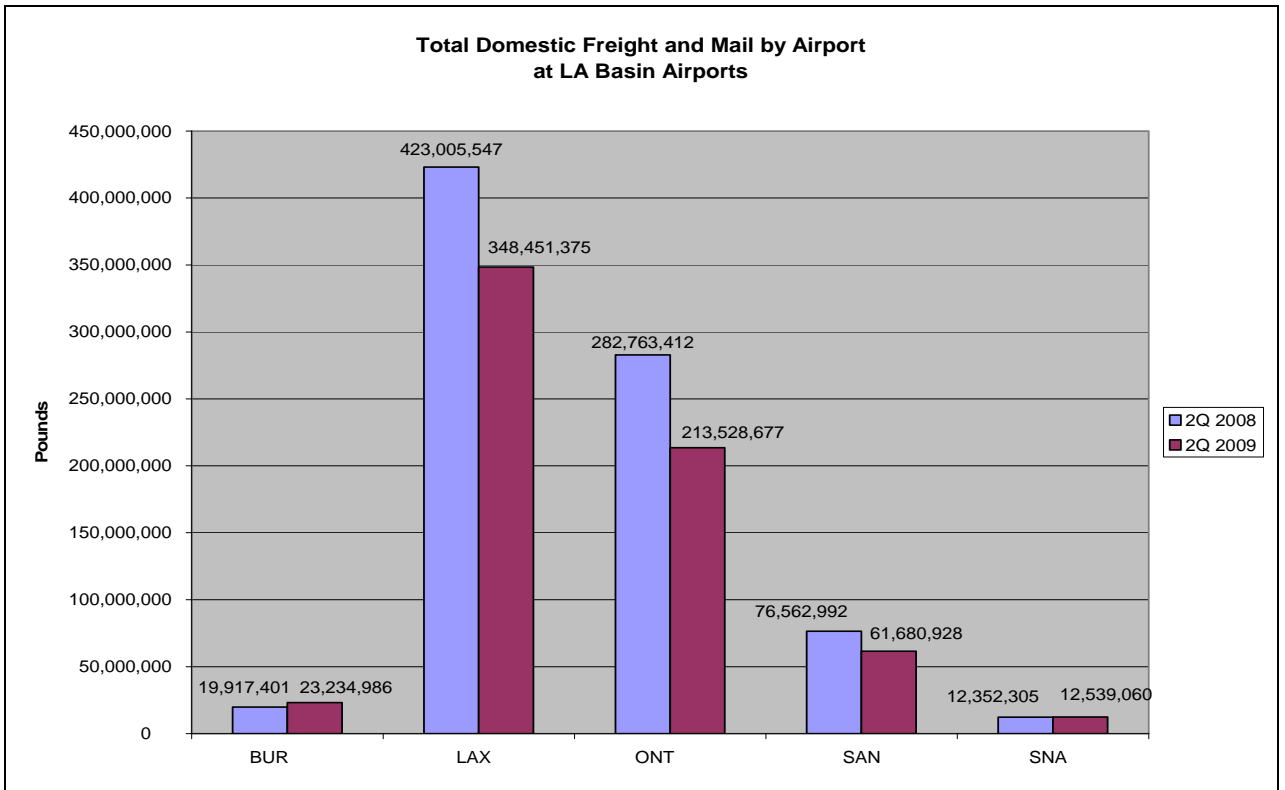
Based on DOT Traffic Data



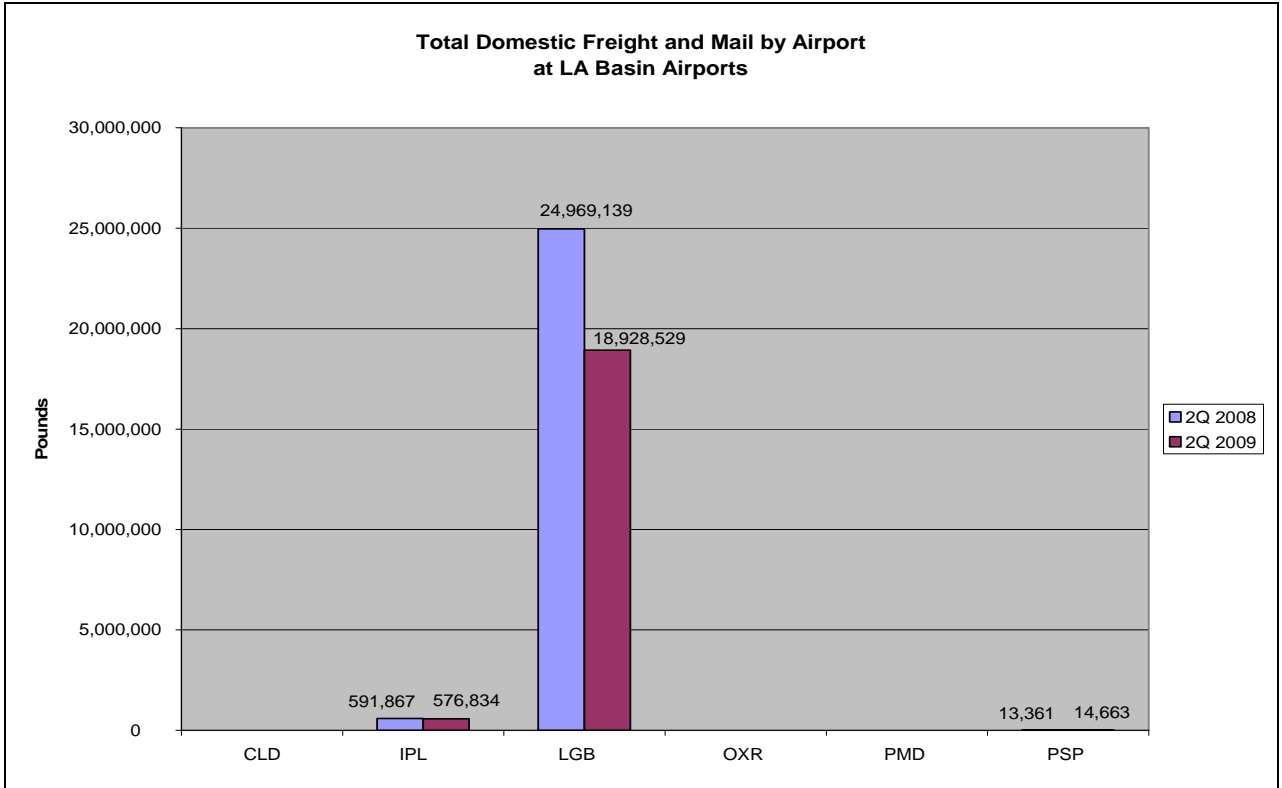
Based on DOT Traffic Data



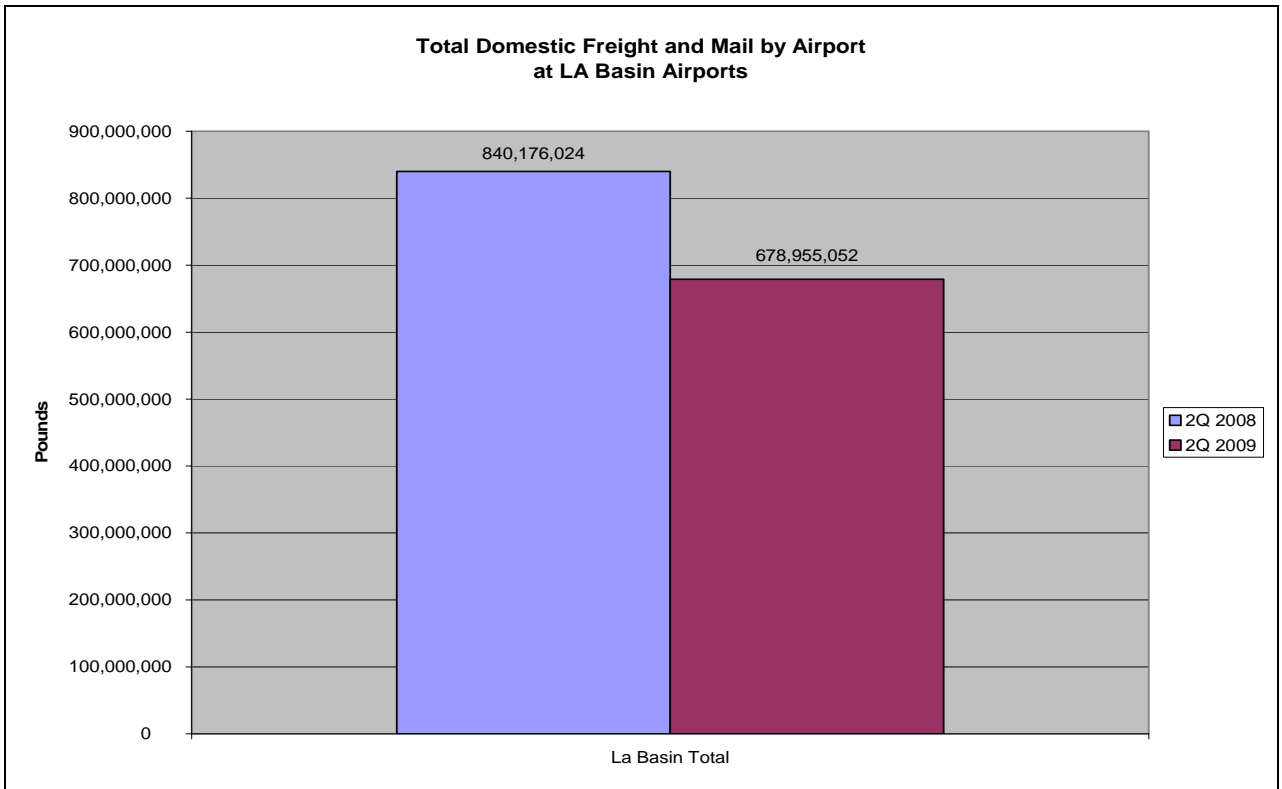
Based on DOT Traffic Data



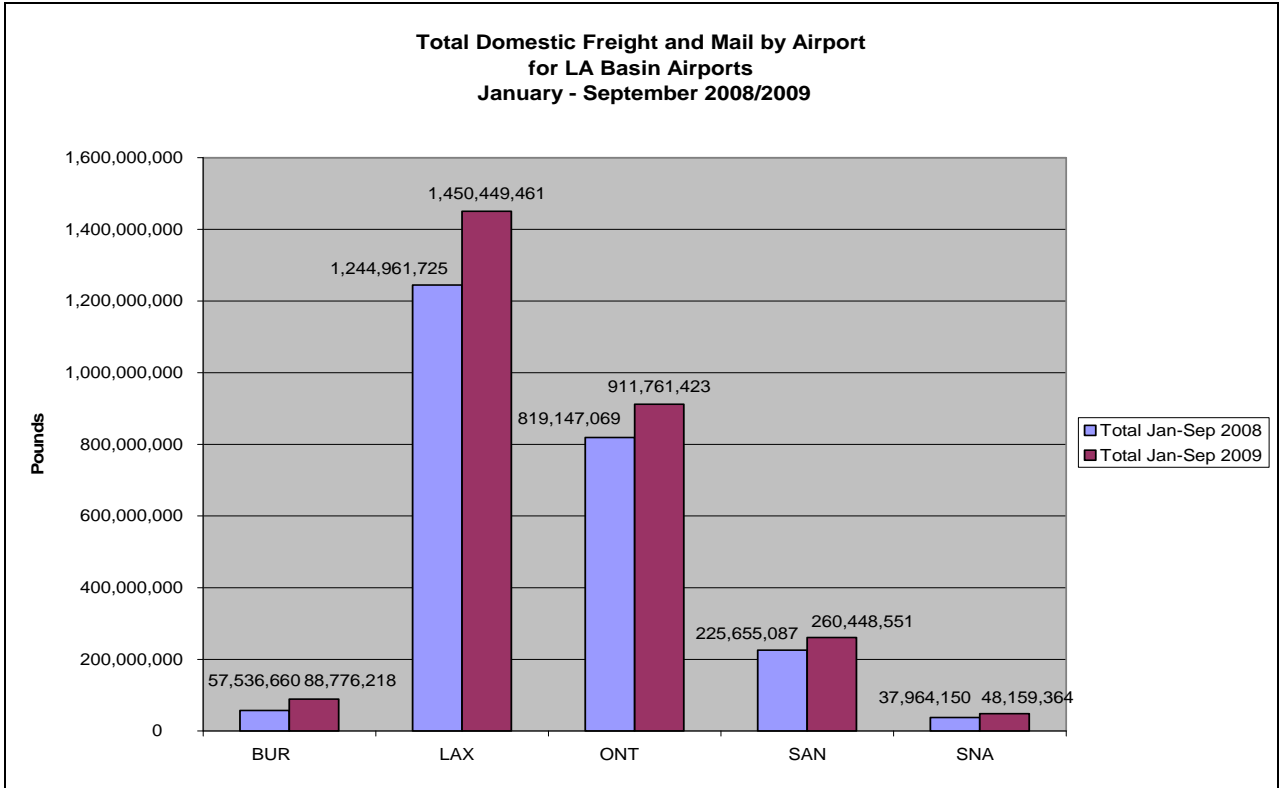
Based on DOT Traffic Data



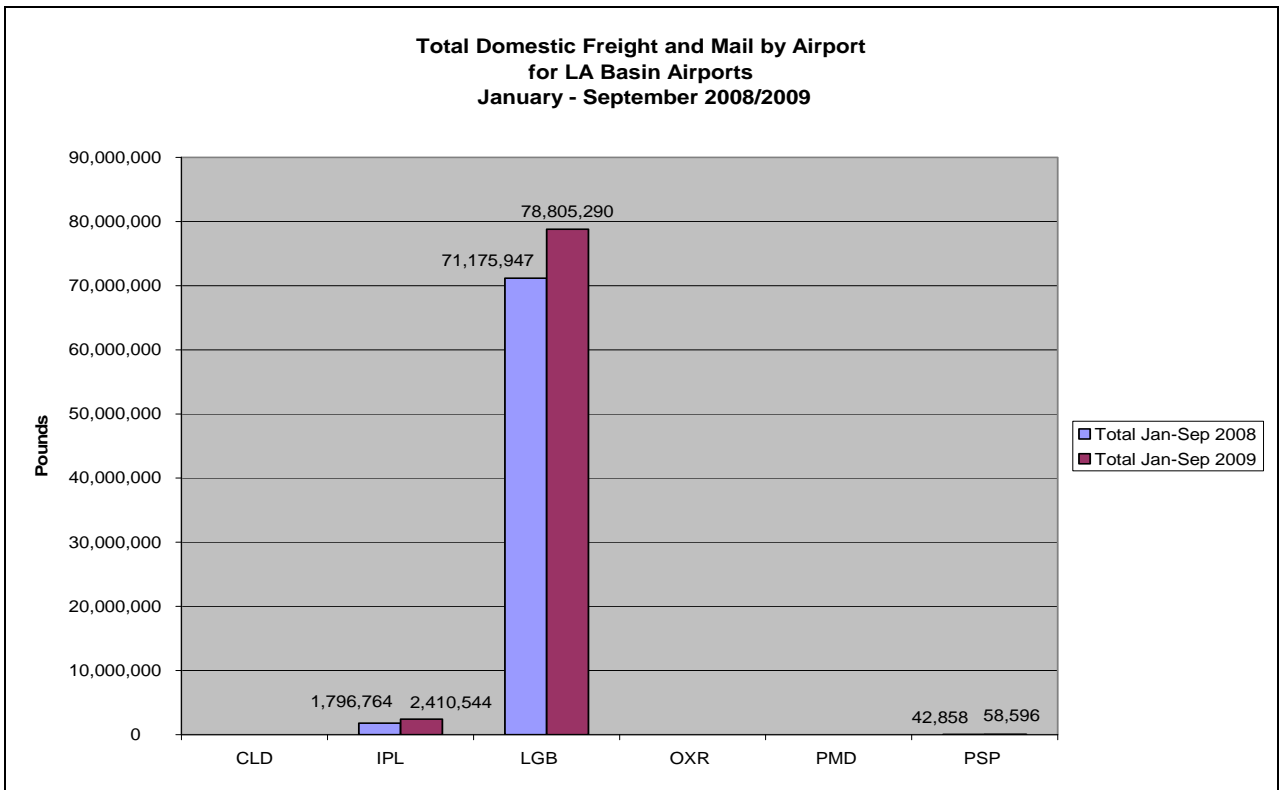
Based on DOT Traffic Data



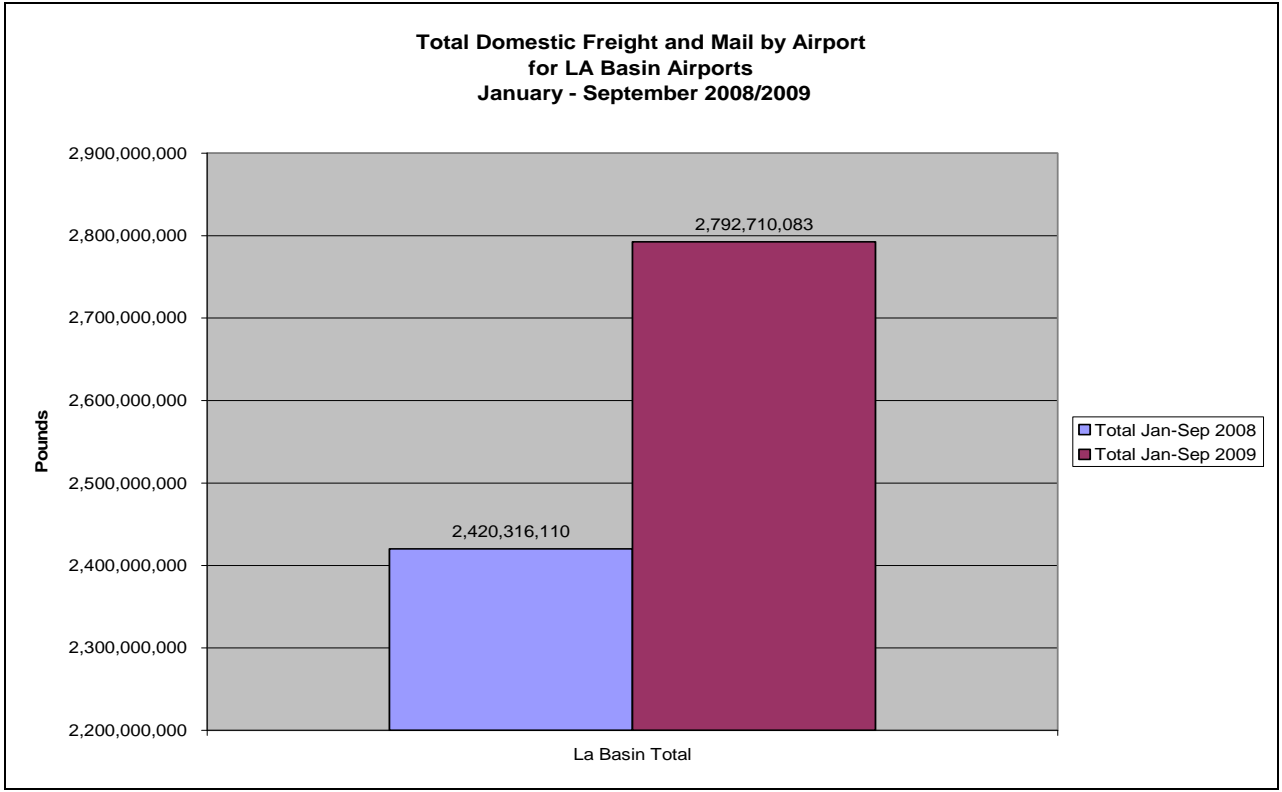
Based on DOT Traffic Data



Based on DOT Traffic Data



Based on DOT Traffic Data

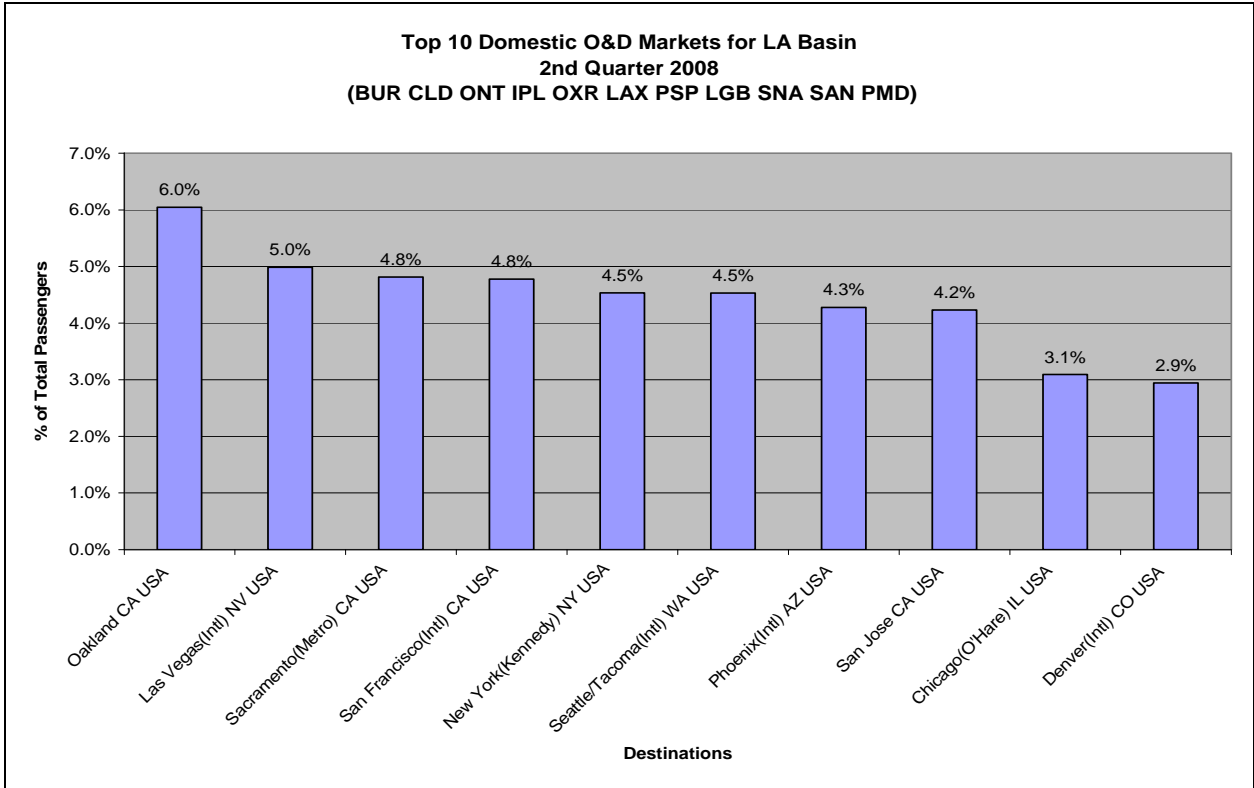


Based on DOT Traffic Data

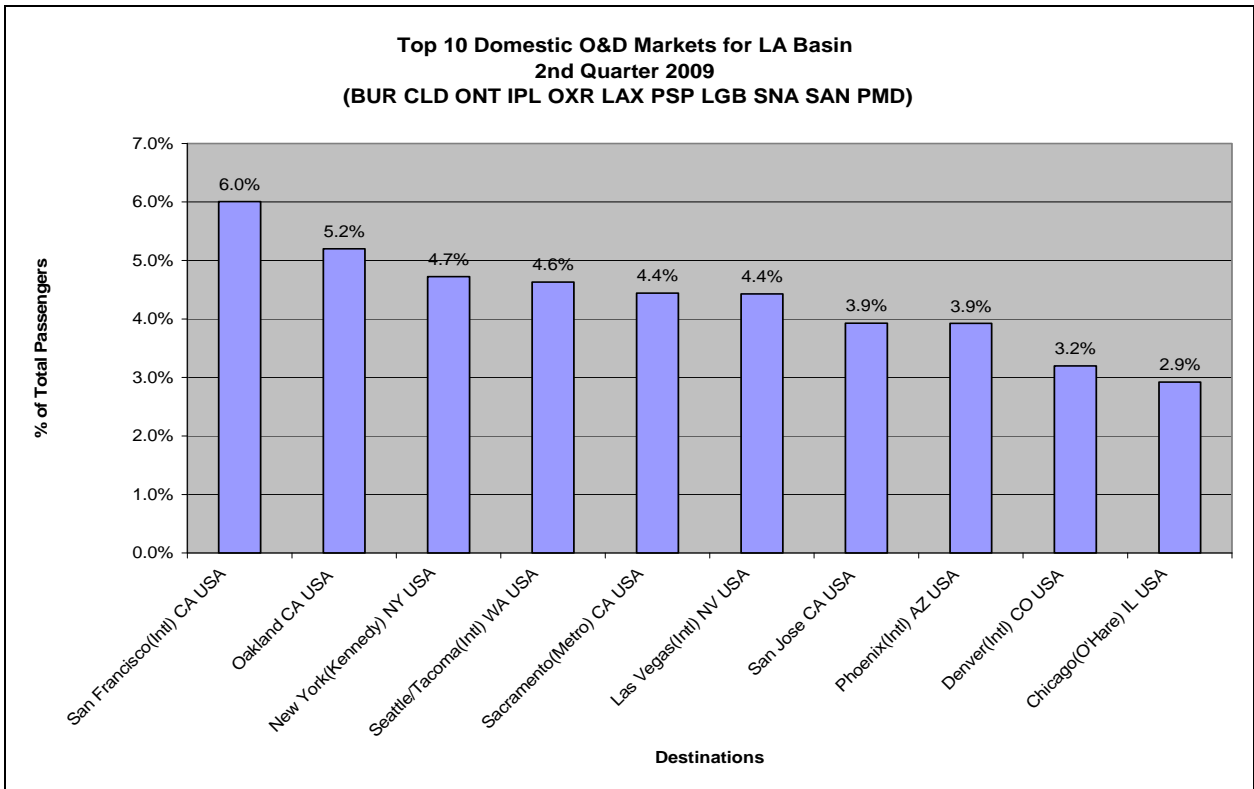
Total Available Seats
by Departure Airport and Total LA Basin

Origin Airport	3rd Quarter 2008	3rd Quarter 2009
LAX	9,884,079	9,330,809
SAN	3,156,537	2,893,453
SNA	1,546,617	1,555,990
ONT	1,054,186	893,890
BUR	1,018,976	891,195
LGB	489,595	474,317
PSP	153,606	160,864
CLD	17,340	16,830
OXR	9,690	9,000
IPL	5,100	5,190
PMD	9,060	-
Total	17,344,786	16,231,538

Based on Schedules Data

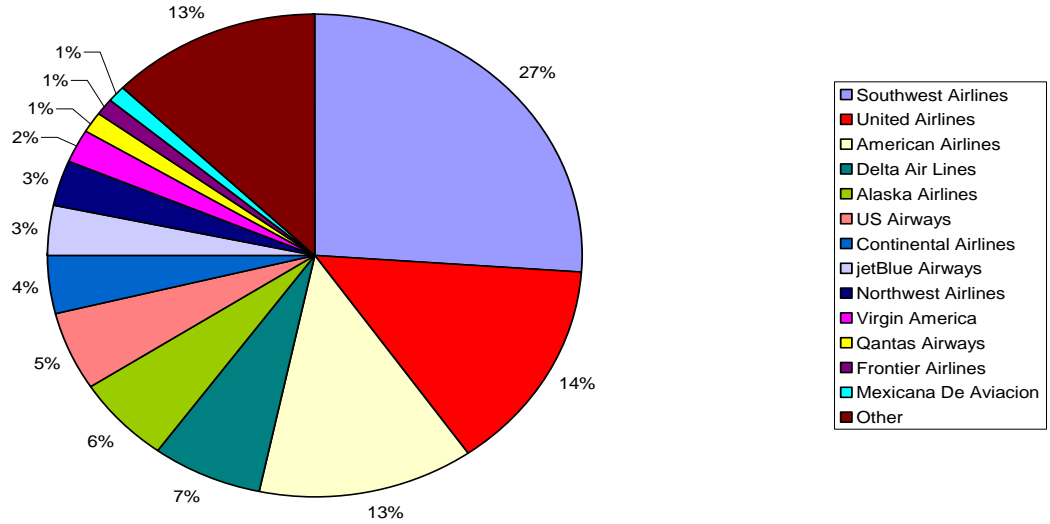


Based on DOT Traffic



Based on DOT Traffic

**Market Share by Departing Seats for LA Basin
3rd Quarter 2009
(BUR CLD ONT IPL OXR LAX PSP LGB SAN SNA PMD)**



Based on Schedules Data

Domestic Load Factors by Airport and Total LA Basin
Narrow Body Aircraft

Origin Airport	Jan - Sep 2008	Jan - Sep 2009
BUR	67.30%	65.06%
LAX	77.67%	78.78%
LGB	78.28%	76.67%
ONT	70.50%	70.57%
PMD	42.00%	No Service
	<small>Allegiant Air Jan 08</small>	<small>Allegiant Air Stopped Reporting</small>
PSP	77.84%	76.37%
SAN	76.92%	77.95%
SNA	73.81%	72.32%
Total	75.66%	76.13%

Based on DOT Traffic Data

Domestic Load Factors by Airport and Total LA Basin
Regional and Turbo-Prop Aircraft

Origin Airport	Jan - Sep 2008	Jan - Sep 2009
BUR	77.61%	75.72%
CLD	49.03%	36.60%
IPL	42.87%	28.89%
LAX	70.05%	72.15%
LGB	73.52%	75.46%
ONT	73.07%	72.11%
OXR	42.86%	37.25%
PMD	33.31%	No Service <small>Skywest Stopped Reporting</small>
PSP	72.58%	70.79%
SAN	73.10%	76.95%
SNA	70.57%	73.43%
Total	70.84%	72.37%

Based on DOT Traffic Data

Domestic Load Factors by Airport and Total LA Basin
Widebody Aircraft

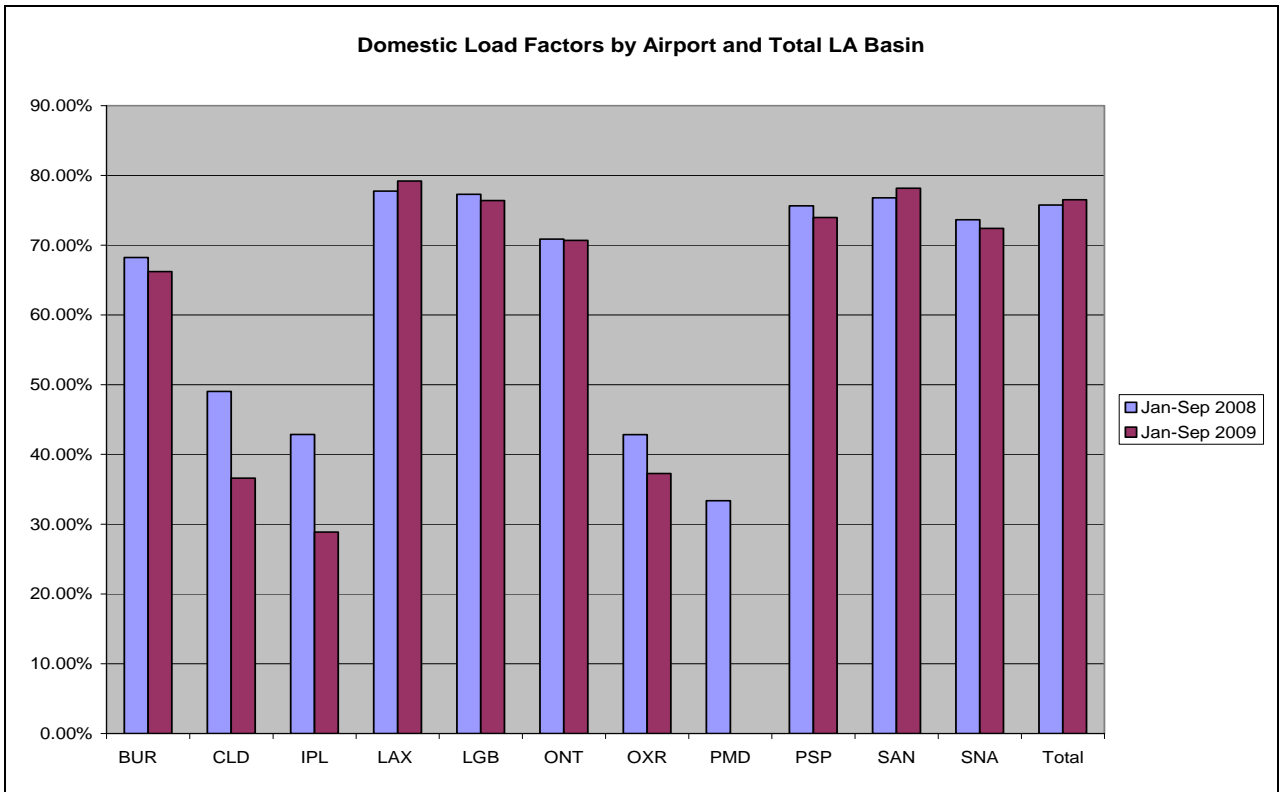
Origin Airport	Jan - Sep 2008	Jan - Sep 2009
BUR	14.22% <small>Pace Airline Flights in Aug08</small>	No Service
LAX	86.44%	88.52%
ONT	64.27%	71.41%
PSP	64.71% <small>Pace Airline Flights in Jan08</small>	No Service
SAN	83.82%	90.26%
Total	86.21%	88.64%

Based on DOT Traffic Data

Domestic Load Factors by Airport and Total LA Basin

Origin Airport	Jan - Sep 2008	Jan - Sep 2009
BUR	68.23%	66.21%
CLD	49.03%	36.59%
IPL	42.87%	28.89%
LAX	77.73%	79.18%
LGB	77.28%	76.37%
ONT	70.86%	70.69%
OXR	42.86%	37.25%
PMD	33.36%	No Service Allegiant Air and Skywest Stopped Reporting
PSP	75.63%	73.95%
SAN	76.80%	78.14%
SNA	73.65%	72.39%
Total	75.74%	76.49%

Based on DOT Traffic Data



Based on DOT Traffic Data

New Non-Stop Routes from LA Basin Airports
Comparing
2nd Quarter 2009 to 3rd Quarter 2009

Origin Airport	Destination Airport	Operating Carrier
IPL	Yuma AZ	UA EXP/Skywest
LAX	Aguascalientes Mexico	Aeromexico
LAX	Aguascalientes Mexico	Aeromexico Connect
LAX	Bellingham WA	Allegiant Air
LAX	Billings MT	Allegiant Air
LAX	Des Moines IA	Allegiant Air
LAX	Fargo ND	Allegiant Air
LAX	Fayetteville(Regional) AR	Allegiant Air
LAX	Grand Junction CO	Allegiant Air
LAX	Guadalajara Mexico	Volaris
LAX	Las Vegas(Intl) NV	Mesa Airlines
LAX	McAllen TX	Allegiant Air
LAX	Medford OR	Allegiant Air
LAX	Mexico City (Toluca) Mexico	Volaris
LAX	Milwaukee WI	Republic Airline
LAX	Missoula MT	Allegiant Air
LAX	Monterey CA	Allegiant Air
LAX	Pittsburgh(Intl) PA	United Airlines
LAX	Roswell NM	American Eagle
LAX	San Salvador El Salvador	Continental Airlines
LAX	Sioux Falls SD	Allegiant Air
LAX	Springfield MO	Allegiant Air
LAX	Sydney(Intl) NS Australia	Delta Air Lines
LAX	Taipei(Taoyuan Intl) Chinese Taipei	Vietnam Airlines
LAX	Wichita KS	Allegiant Air

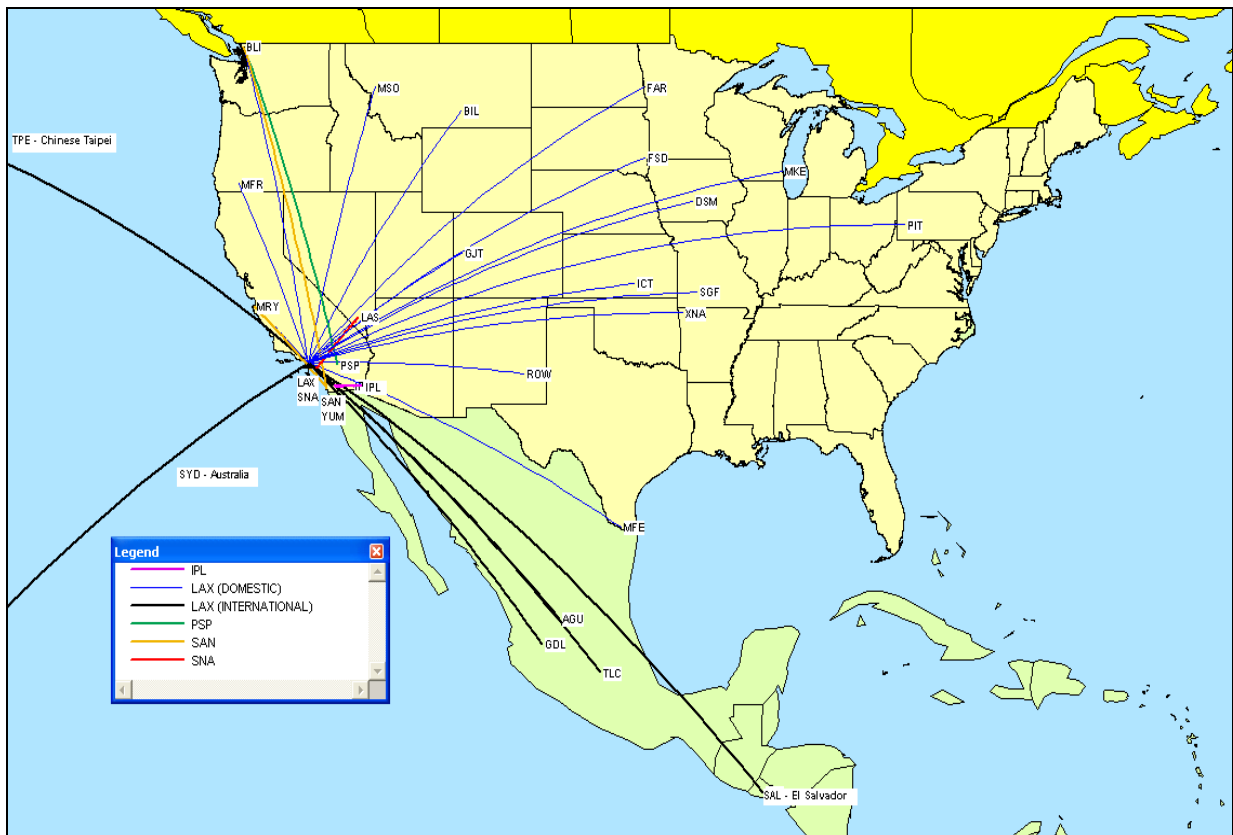
Based on Schedules Data

New Non-Stop Routes from LA Basin Airports
Comparing
2nd Quarter 2009 to 3rd Quarter 2009

Origin Airport	Destination Airport	Operating Carrier
PSP	Bellingham WA	Allegiant Air
SAN	Bellingham WA	Allegiant Air
SAN	Monterey CA	Allegiant Air
SNA	Las Vegas(Intl) NV	Mesa Airlines

Based on Schedules Data

New Non-Stop Routes from LA Basin Airports Comparing 2nd Quarter 2009 to 3rd Quarter 2009



Lost Non-Stop Routes from LA Basin Airports
Comparing
2nd Quarter 2009 to 3rd Quarter 2009

Origin Airport	Destination Airport	Operating Carrier
LAX	Chicago(O'Hare) IL	United Airlines
LAX	Culiacan Mexico	Aeromexico Connect
LAX	Fayetteville(Regional) AR	American Eagle
LAX	Mammoth Lakes CA	Horizon Air
LAX	Mazatlan Mexico	Mexicana De Aviacion
LAX	Monterrey Mexico	Mexicana De Aviacion
LAX	Newark/New York(Liberty) NJ	Asiana Airlines
LAX	Osaka(Kansai Intl) Japan	EVA Airways
LAX	Vail/Eagle CO	American Airlines
PSP	Chicago(O'Hare) IL	United Airlines
PSP	Denver(Intl) CO	United Airlines
PSP	Edmonton(Intl) AB Canada	WestJet
PSP	Minneapolis/St. Paul(Intl) MN	Sun Country Airlines
PSP	Portland OR	Alaska Airlines
PSP	San Jose CA	Horizon Air
PSP	Vancouver(Intl) BC Canada	WestJet
SAN	Chicago(O'Hare) IL	United Airlines
SAN	Salt Lake City UT	Mesaba Airlines
SAN	San Francisco(Intl) CA	United Airlines
SNA	Cincinnati(Intl) OH	Delta Air Lines

Based on Schedules Data

Changes in Aircraft Type at LA Basin Airports
Comparing
2nd Quarter 2009 to 3rd Quarter 2009

Airport	New Aircraft	Lost Aircraft
LAX		EMBRAER 170
LAX	EMBRAER 170/175/190/195	
ONT		AIRBUS INDUSTRIE A321
PSP		AIRBUS INDUSTRIE A319
PSP		BOEING 737-600
PSP		BOEING 737-800
SAN	AIRBUS INDUSTRIE A318/319/320/321	
SNA	AIRBUS INDUSTRIE A318/319/320/321	
SNA	AIRBUS INDUSTRIE A321	
SNA		BOEING 737-500

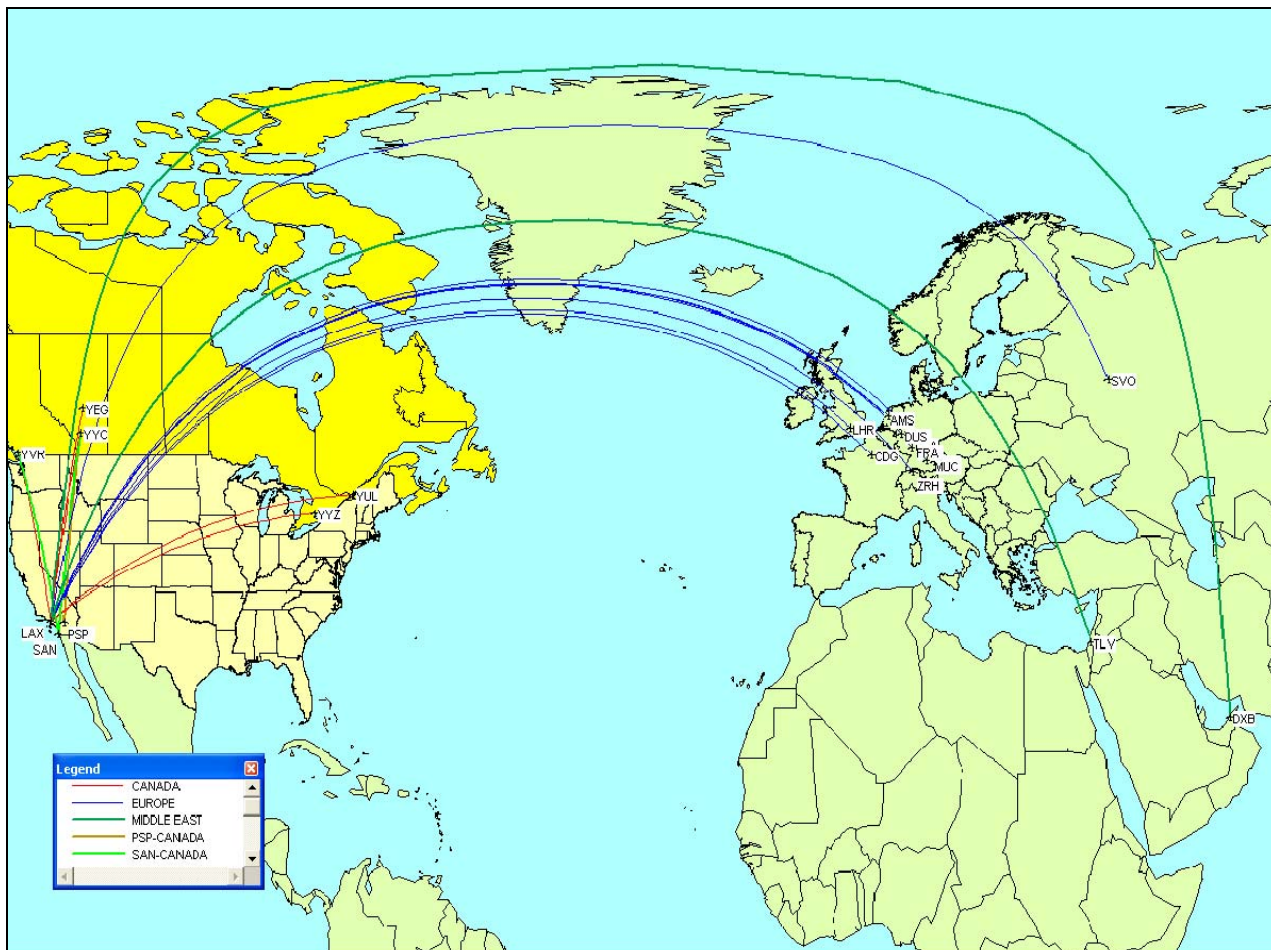
Based on Schedules Data

Changes in Airlines at LA Basin Airports
Comparing
2nd Quarter 2009 to 3rd Quarter 2009

Airport	New Airline	Lost Airline
LAX	Allegiant Air	
LAX	Vietnam Airlines	
LAX	Volaris	
PSP	Allegiant Air	
PSP		Sun Country Airlines
PSP		United Airlines
SAN	Allegiant Air	
SAN		Mesaba Airlines
SAN		United Airlines

Based on Schedules Data

International Routes from LA Basin Airports (Canada, Europe and Middle East Regions) 3rd Quarter 2009



International Routes from LA Basin Airports (Caribbean, Central and South American Regions) 3rd Quarter 2009



International Routes from LA Basin Airports (Asia and Pacific Rim Regions) 3rd Quarter 2009

