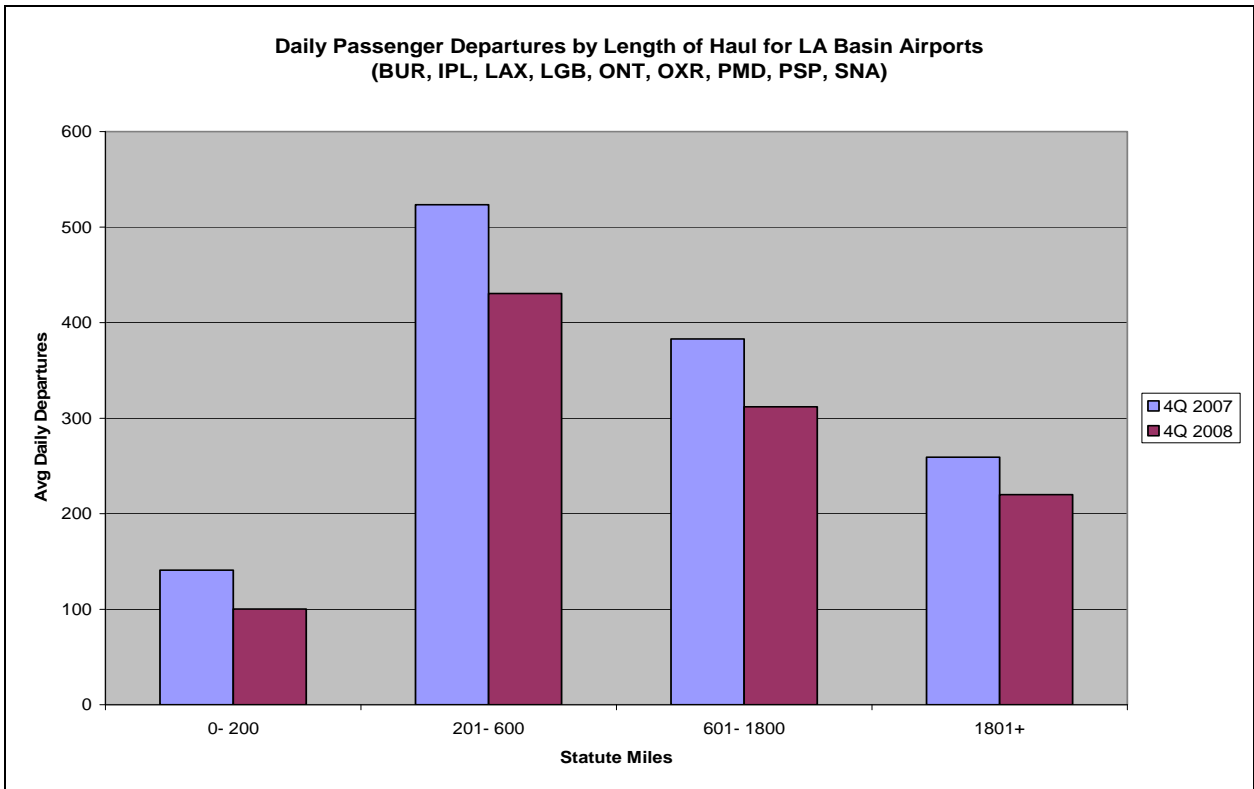


Quarterly Reports for
Southern California Association of
Governments (SCAG)

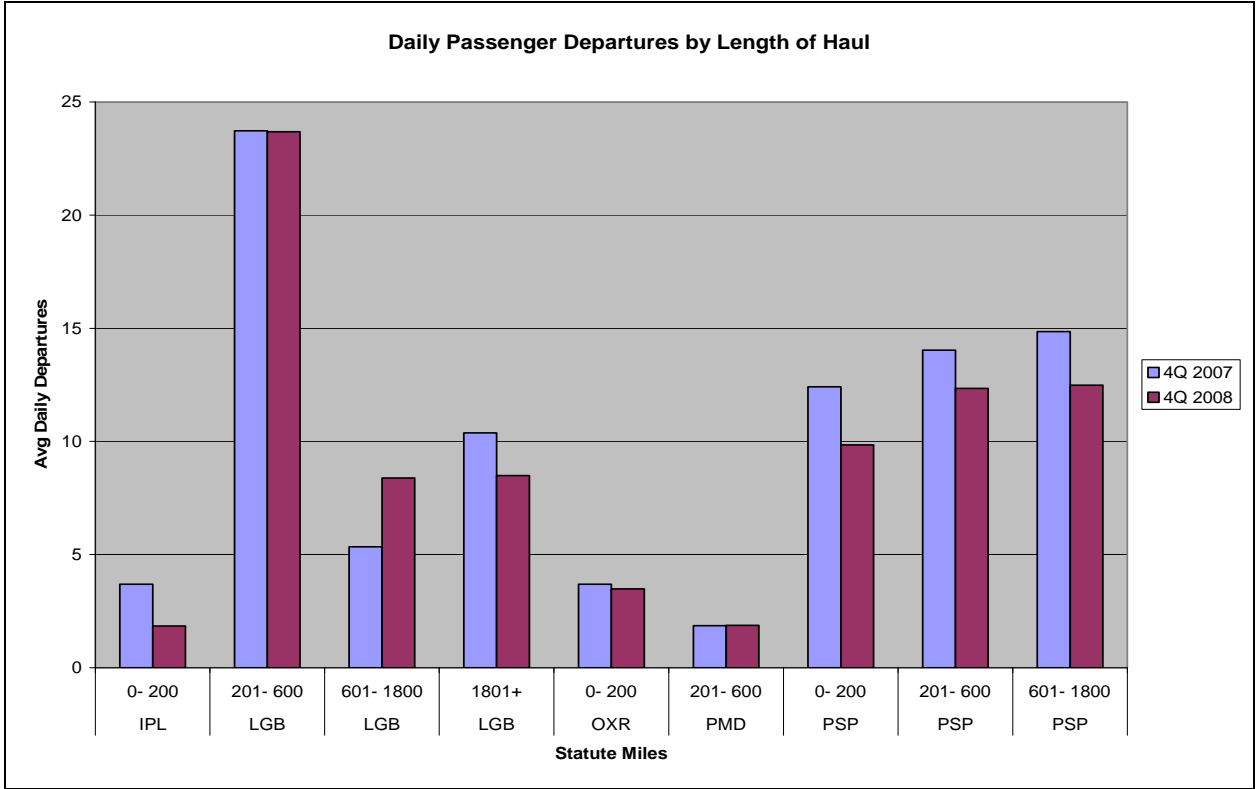
Produced by
OAG Aviation Solutions

4th Quarter 2008

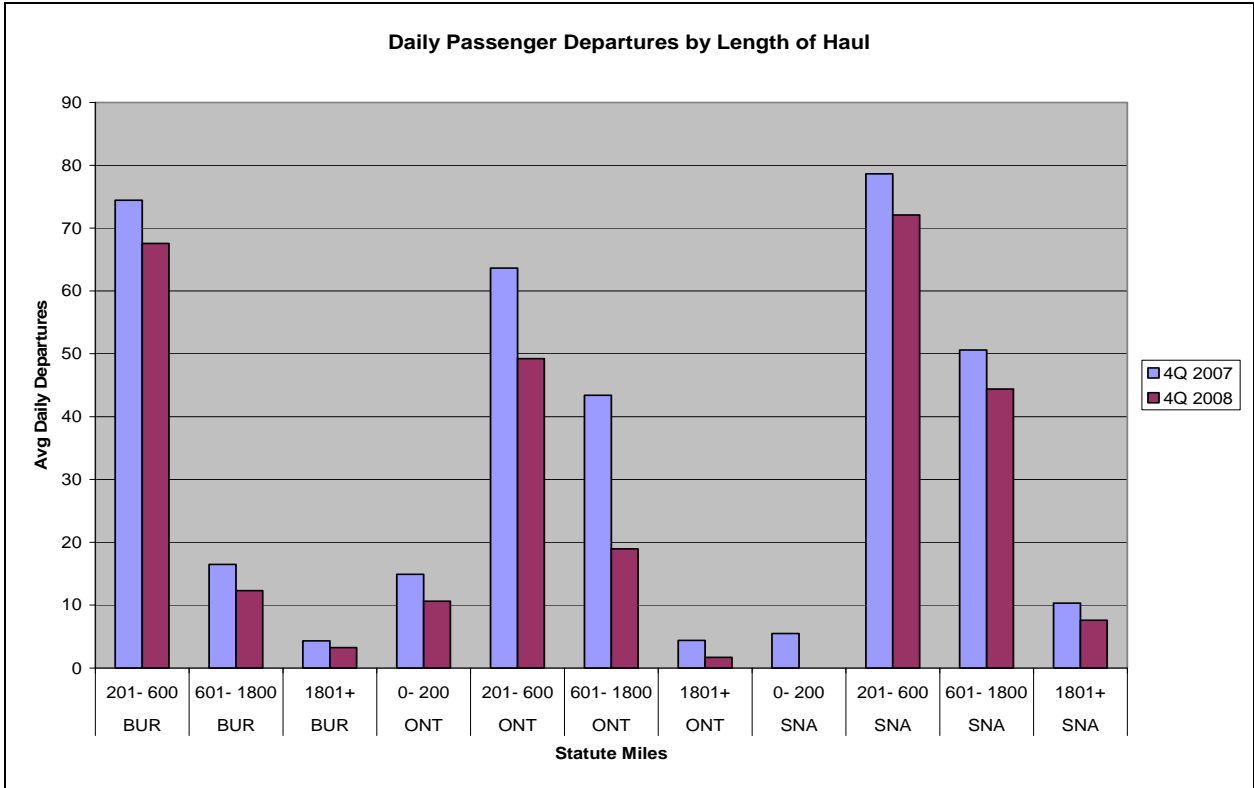


Based on Schedules Data

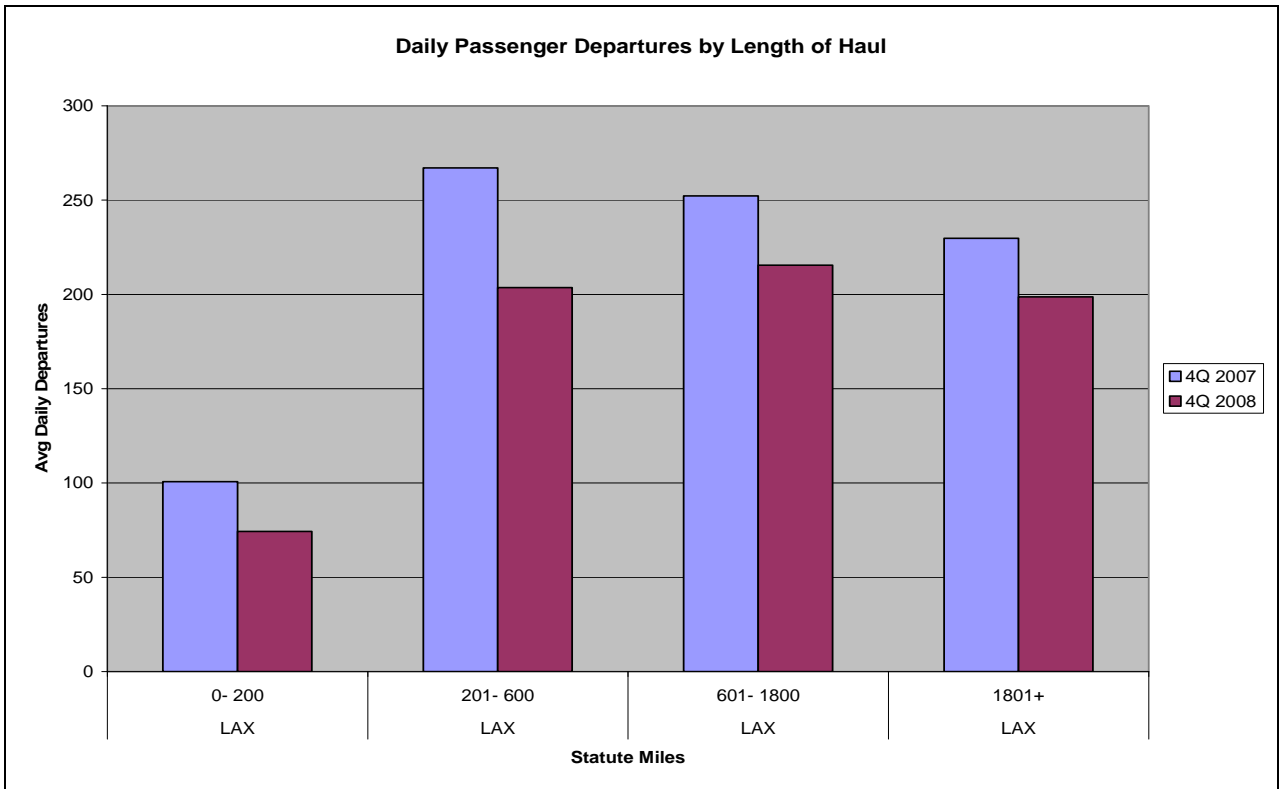
- BUR**- Burbank
- IPL** - El Centro/Imperial
- LAX** - Los Angeles (INTL)
- LGB** - Long Beach
- ONT** - Ontario
- OXR** - Oxnard/Ventura
- PMD** -Palmdale/Lancaster
- PSP**- Palm Springs
- SNA** - Santa Ana (J. Wayne)



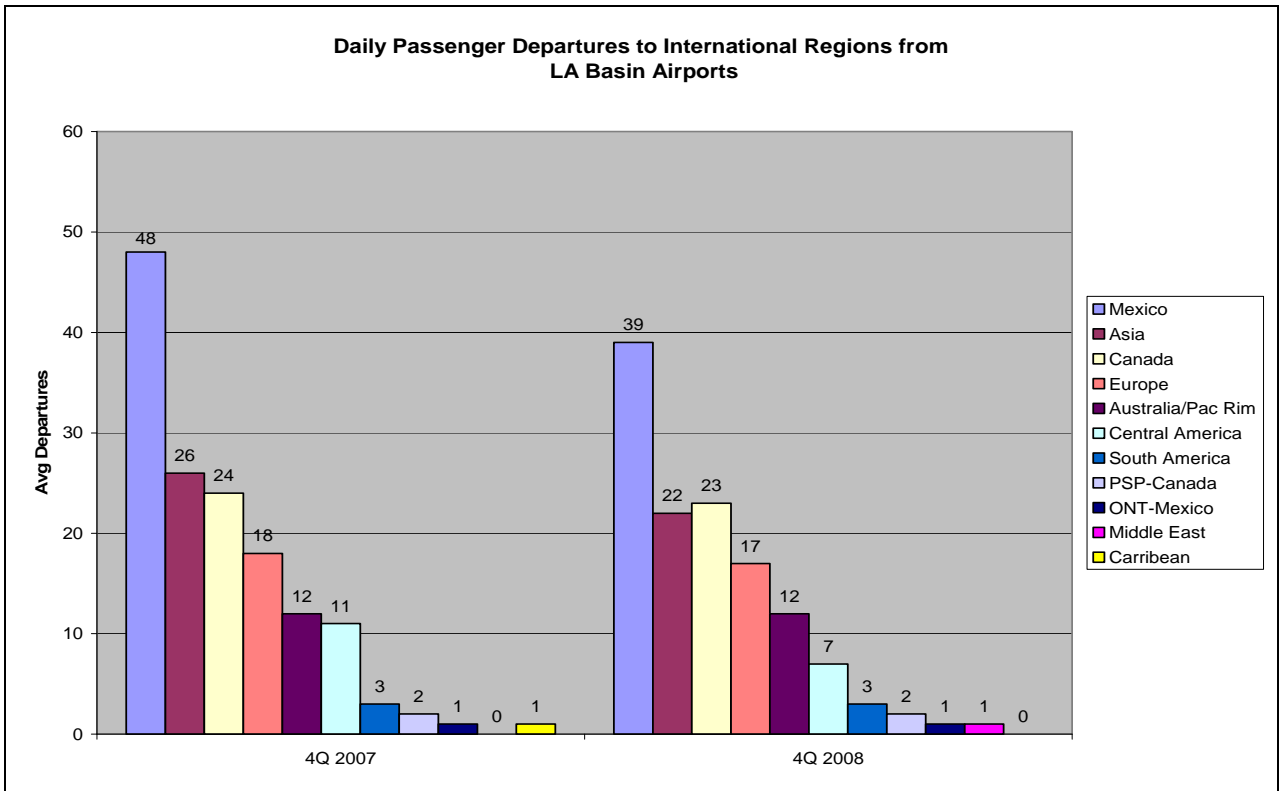
Based on Schedules Data



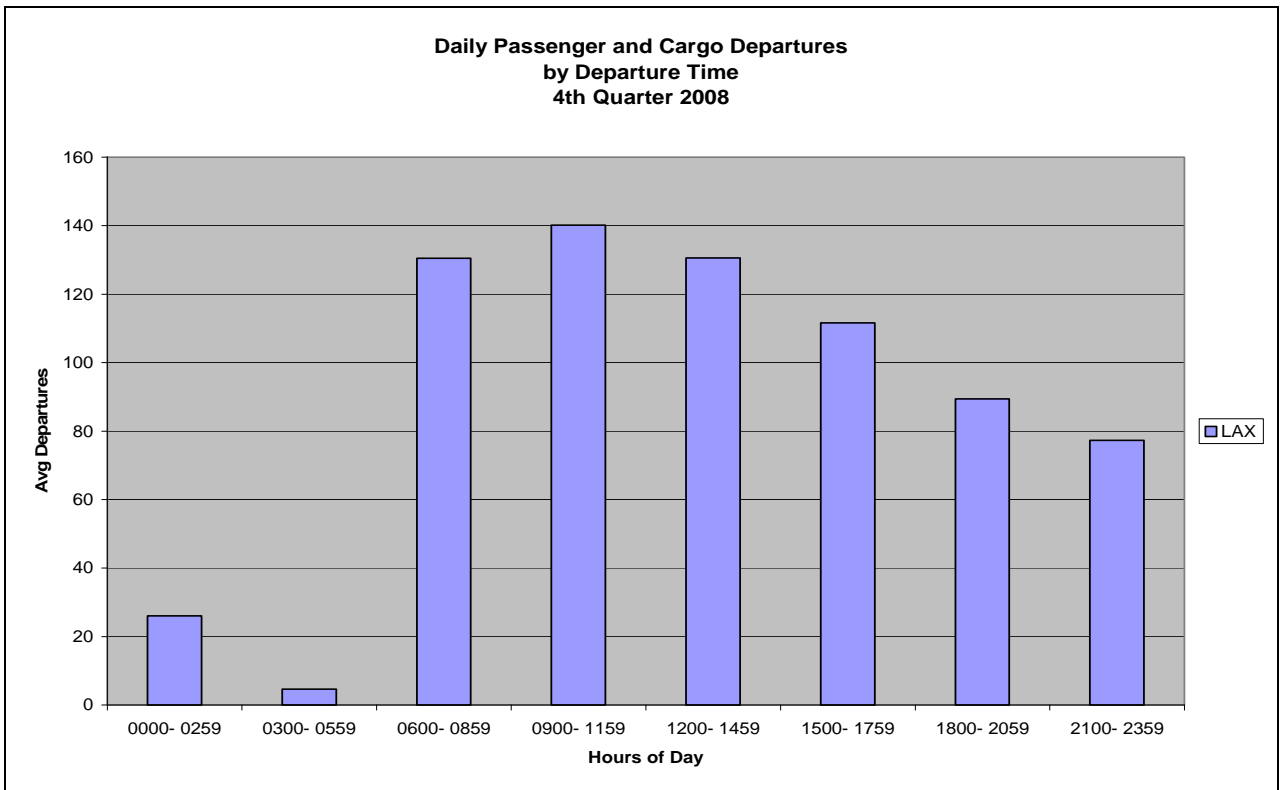
Based on Schedules Data



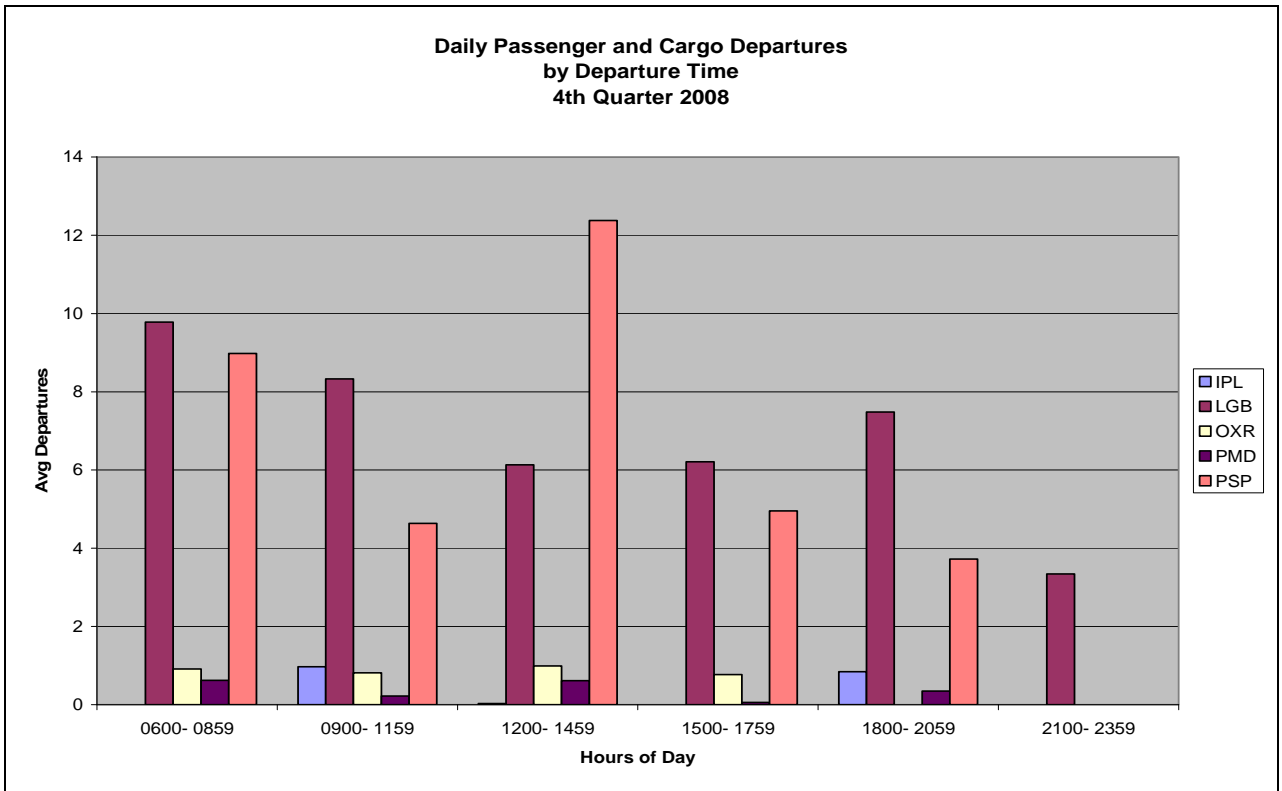
Based on Schedules Data



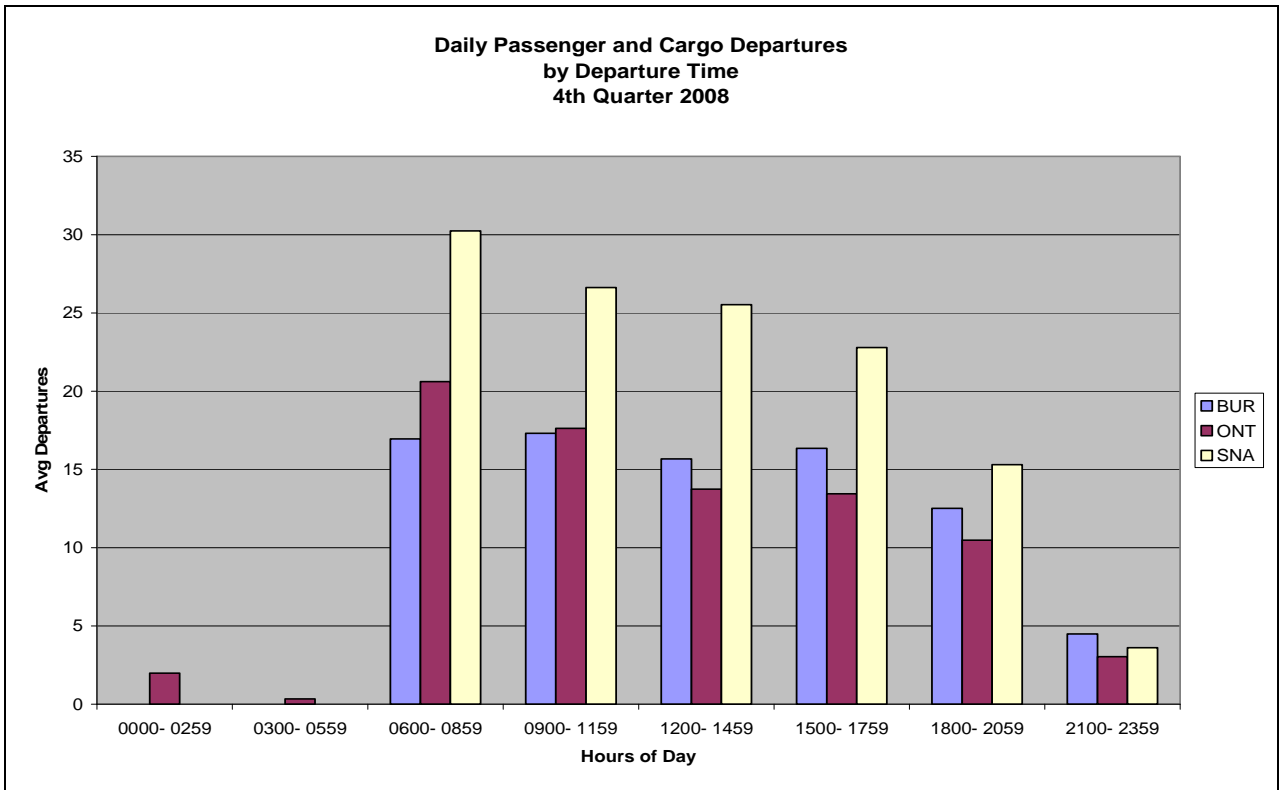
Based on Schedules Data



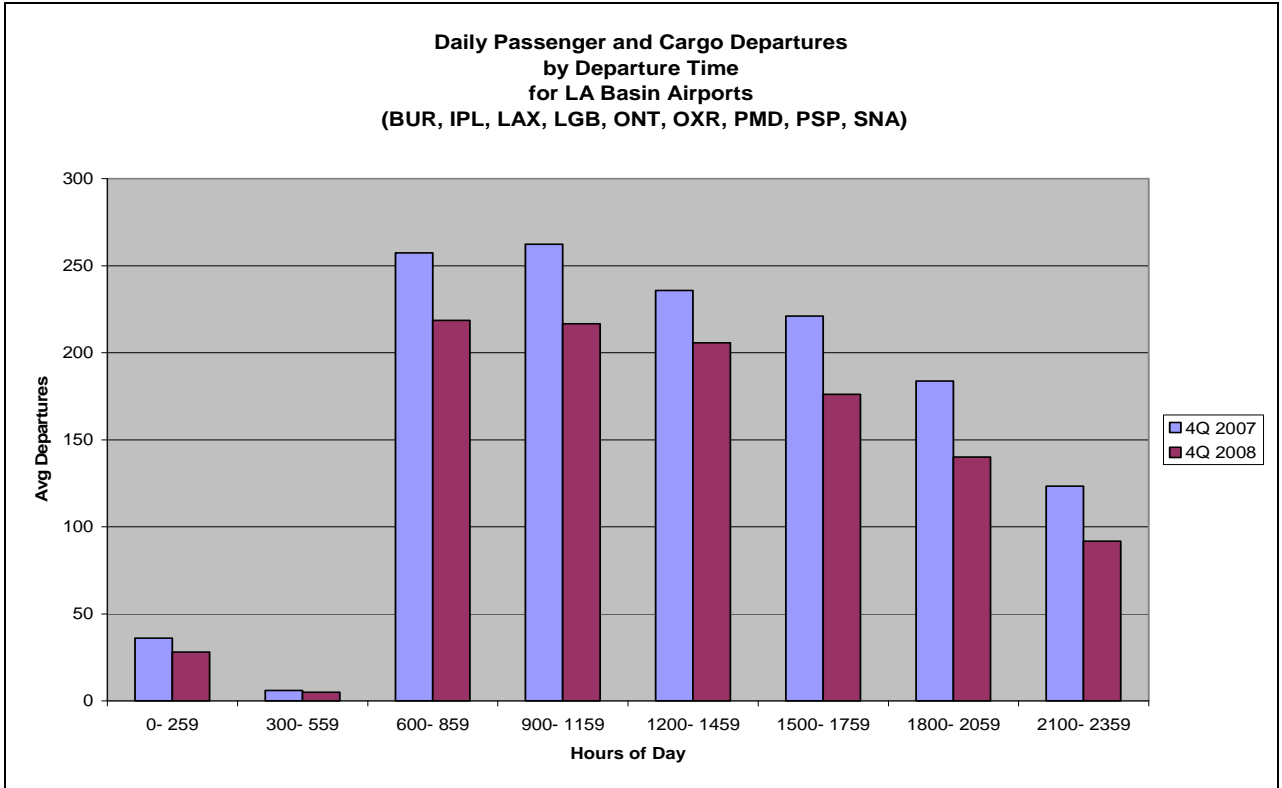
Based on Schedules Data



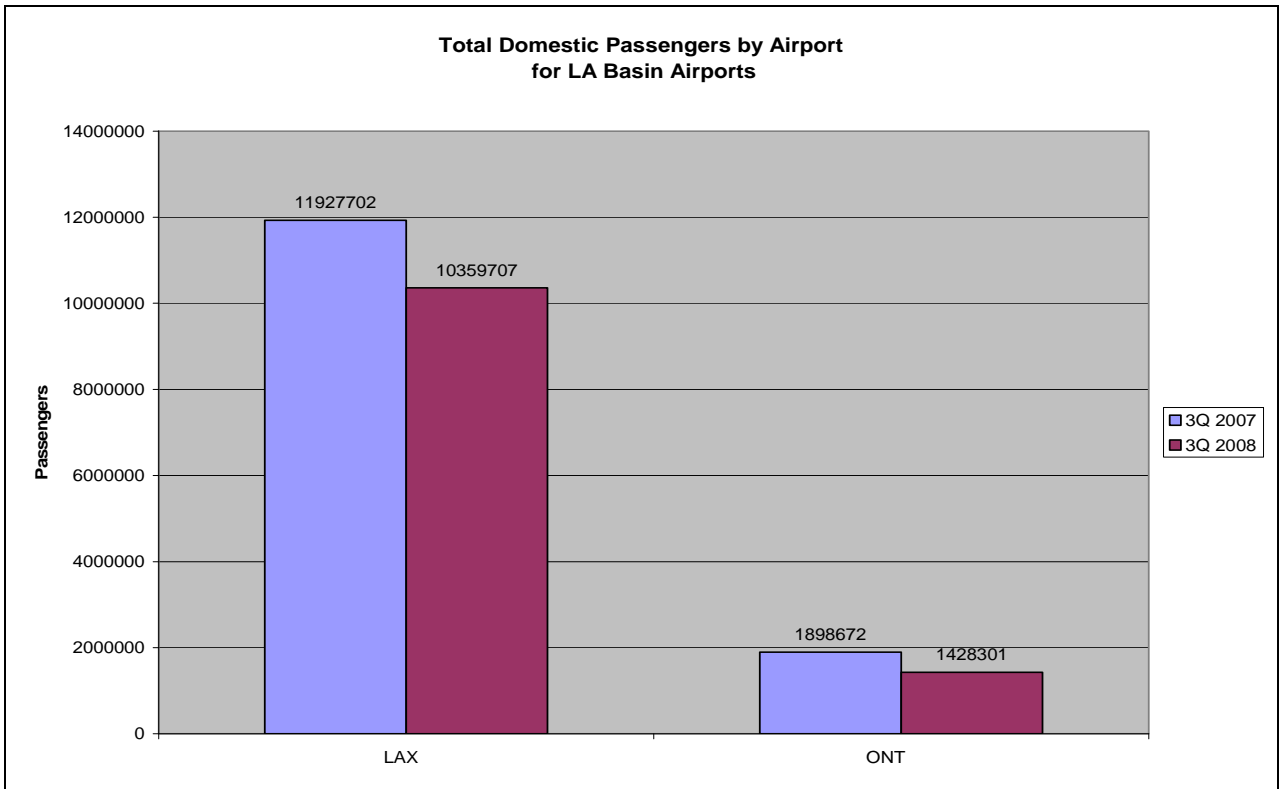
Based on Schedules Data



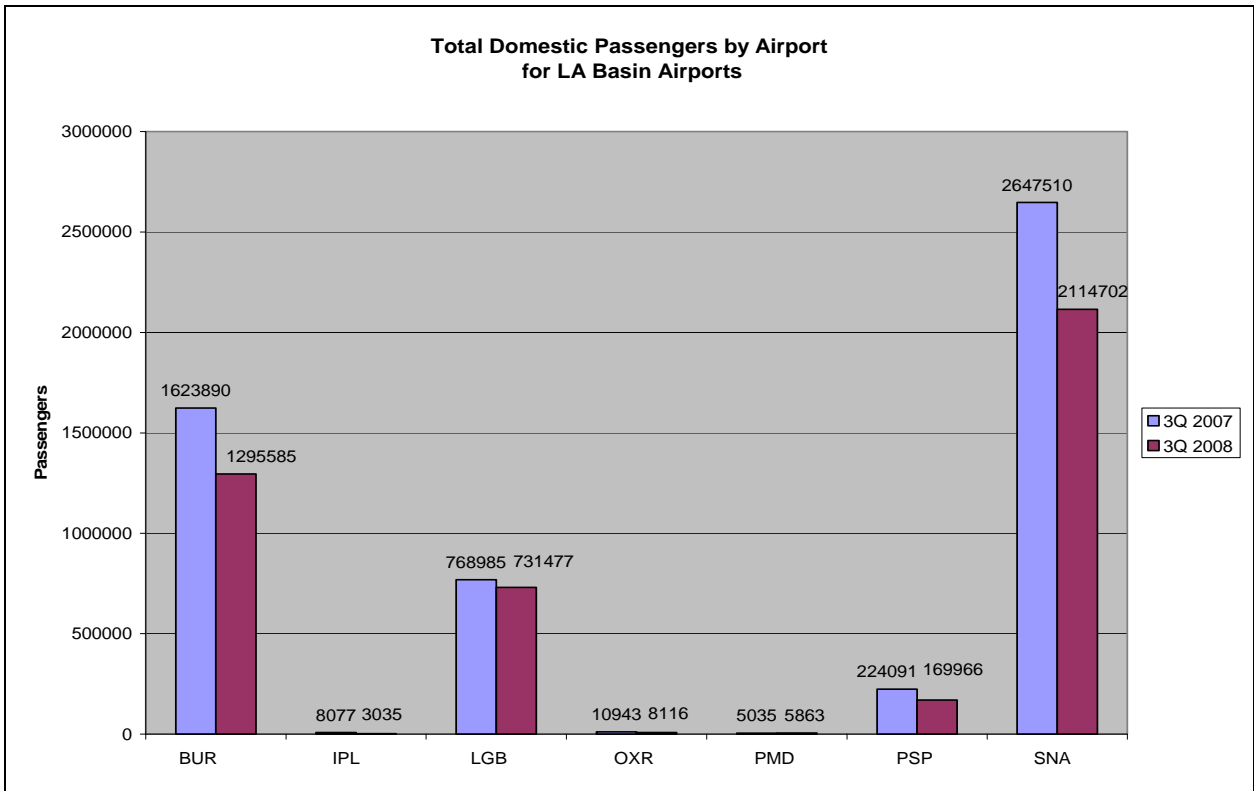
Based on Schedules Data



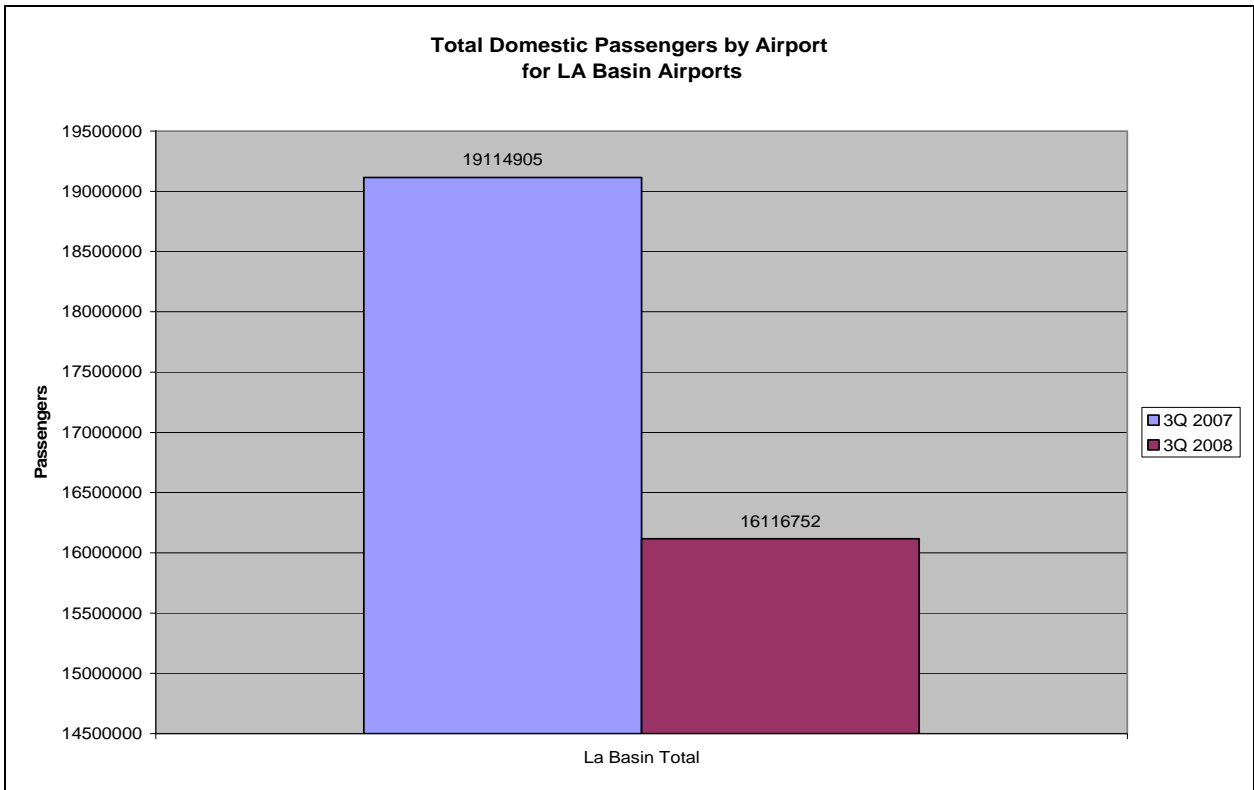
Based on Schedules Data



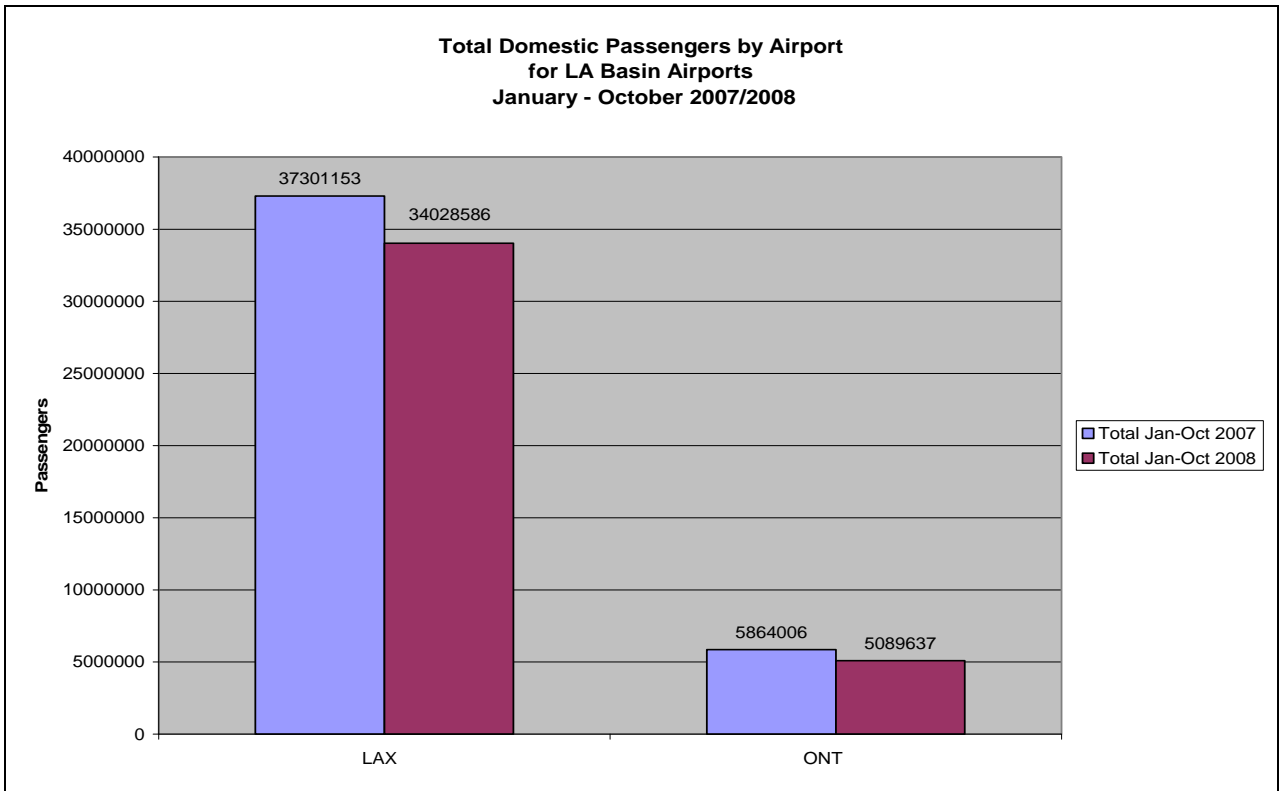
Based on DOT Traffic Data



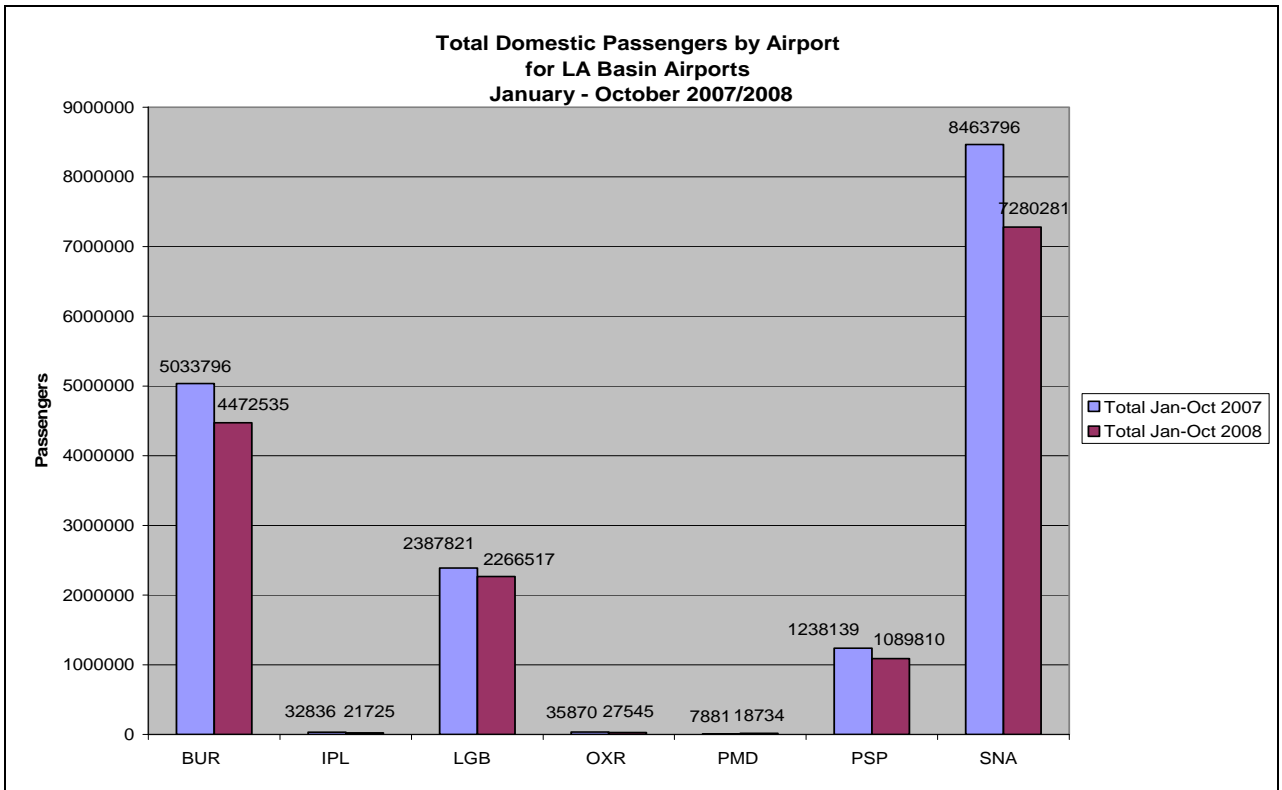
Based on DOT Traffic Data



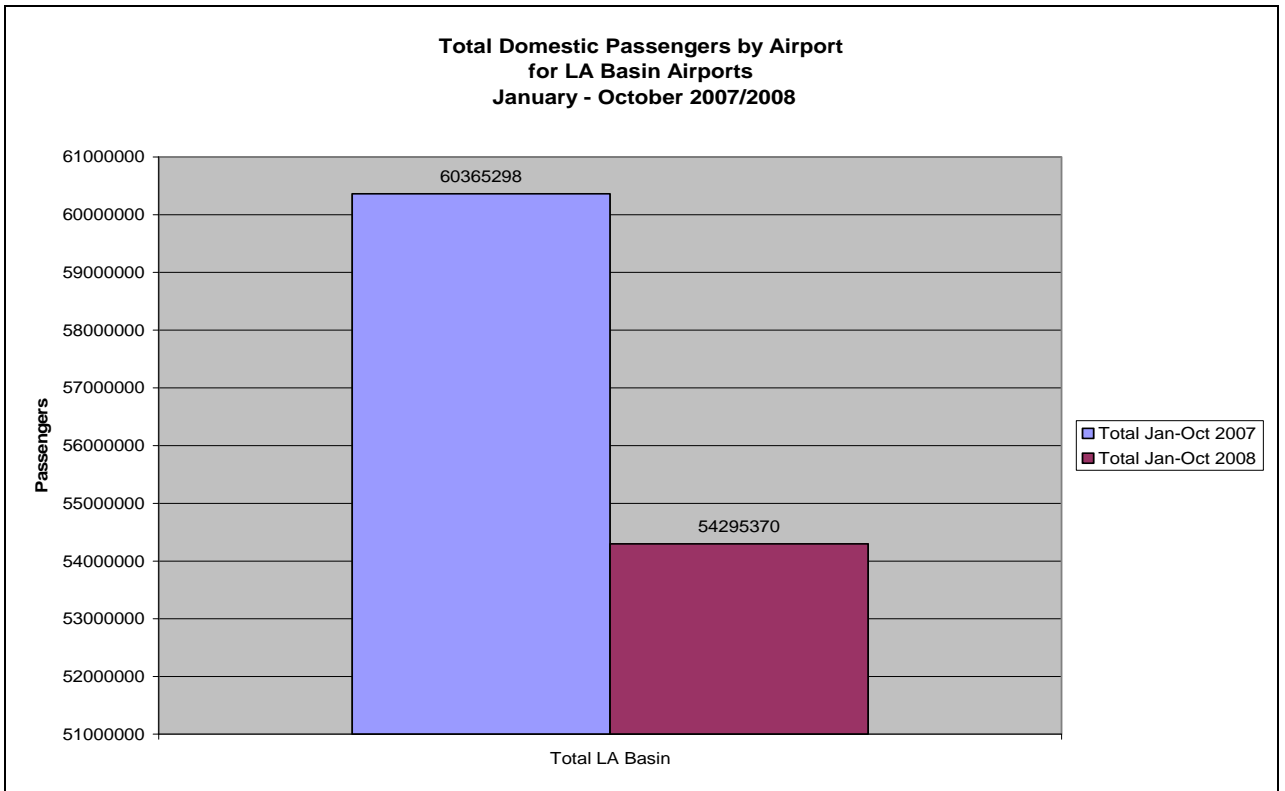
Based on DOT Traffic Data



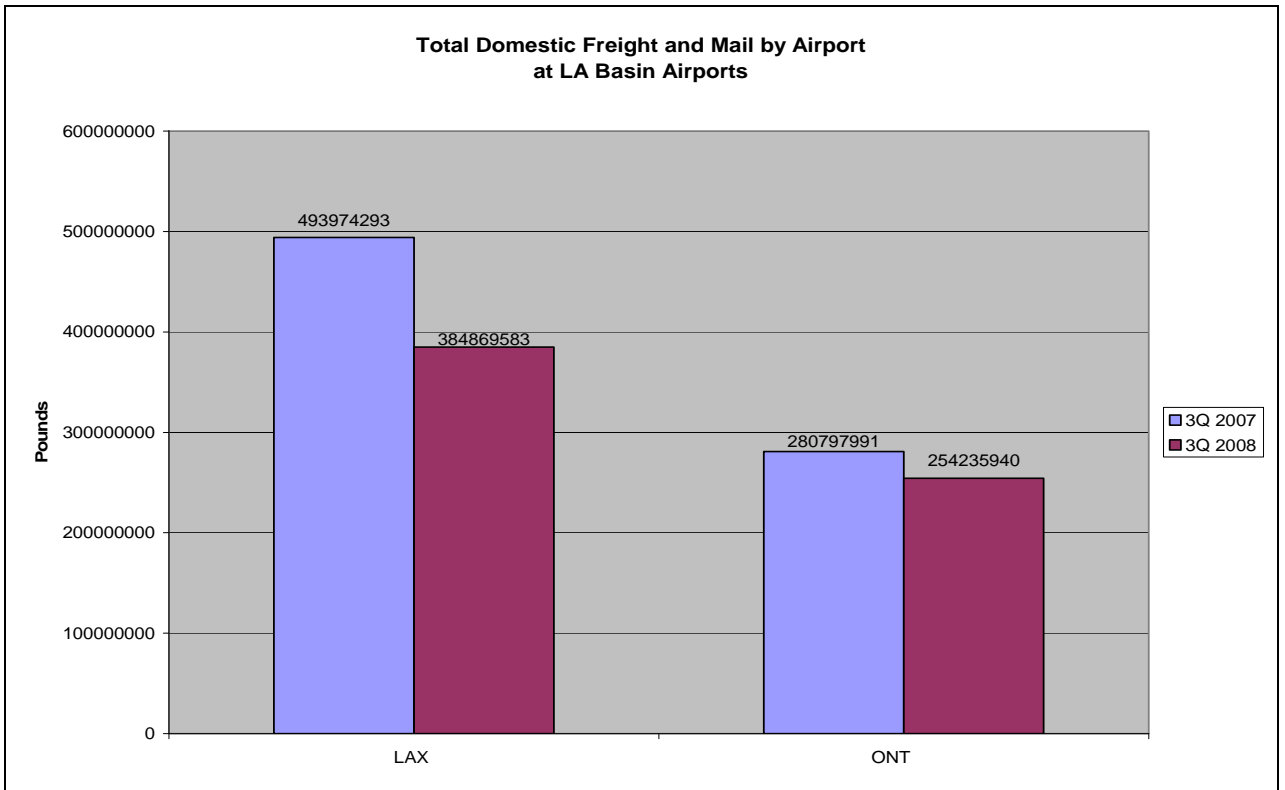
Based on DOT Traffic Data



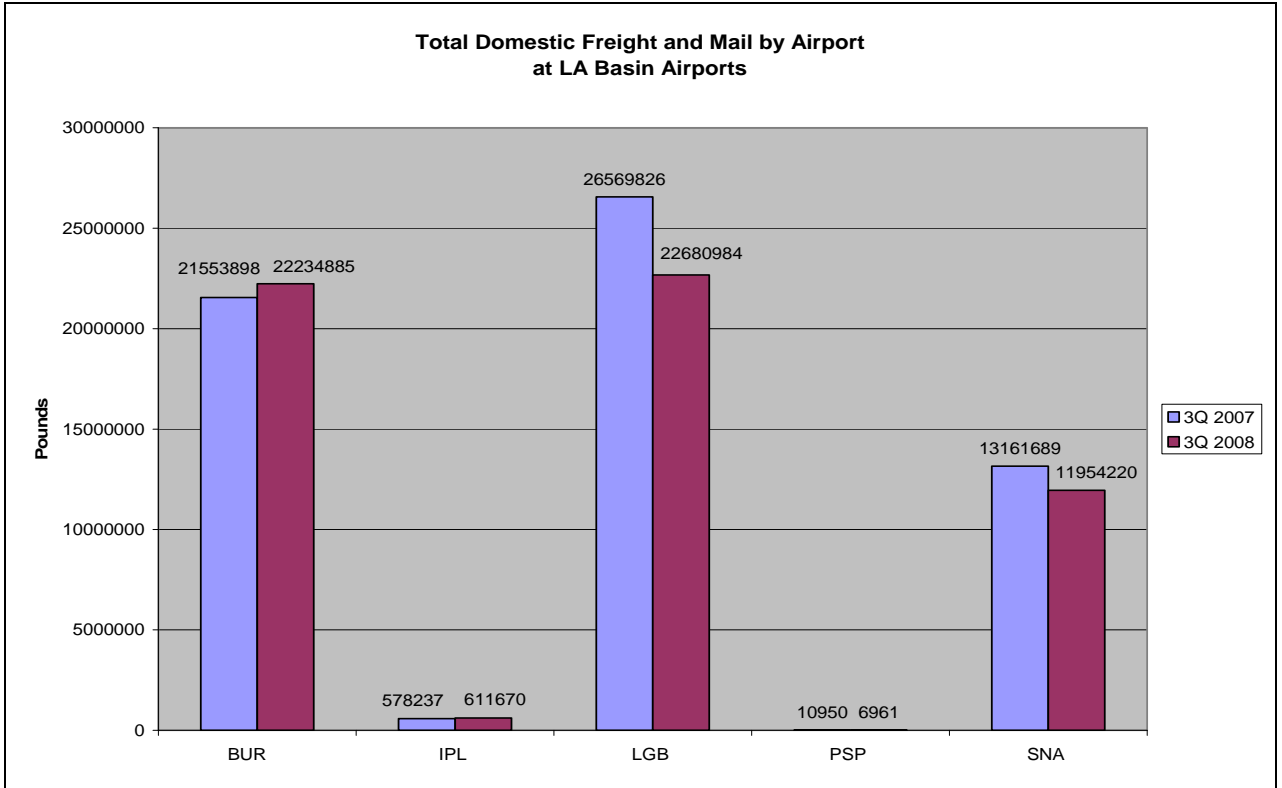
Based on DOT Traffic Data



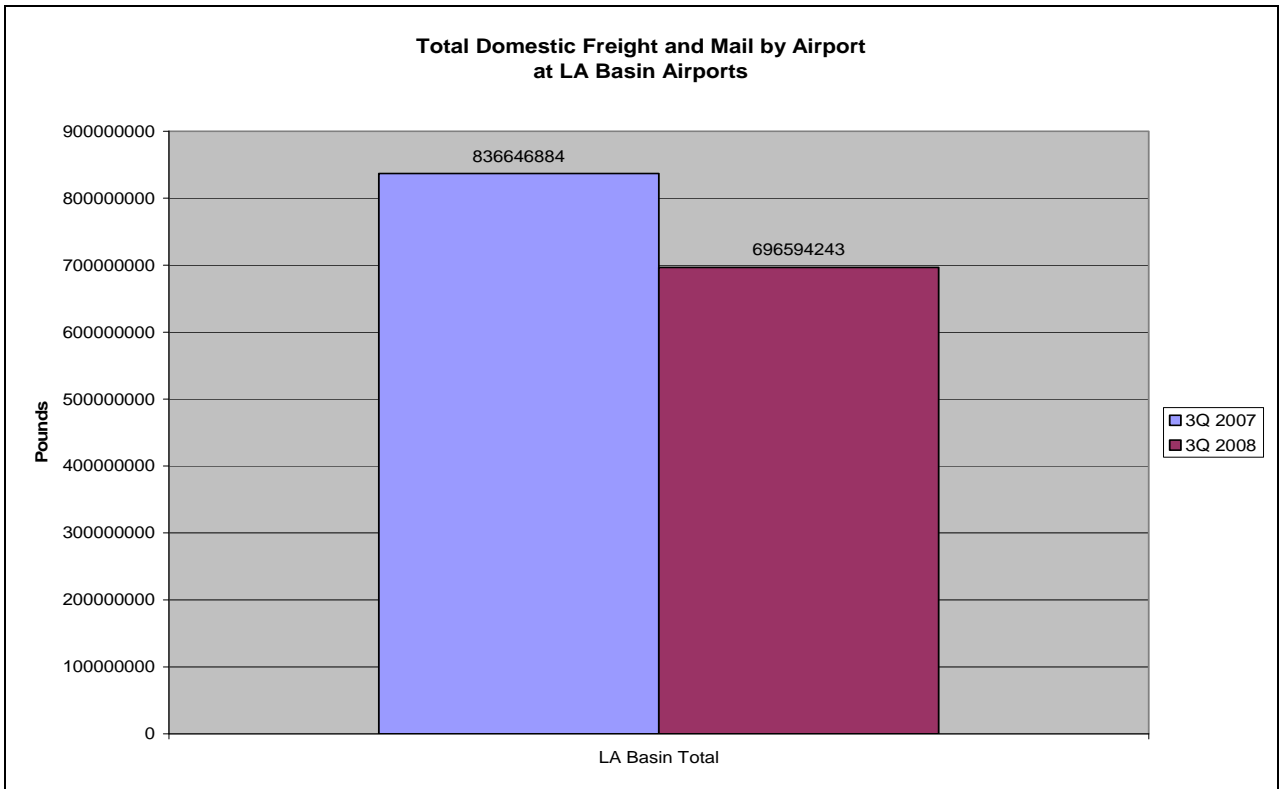
Based on DOT Traffic Data



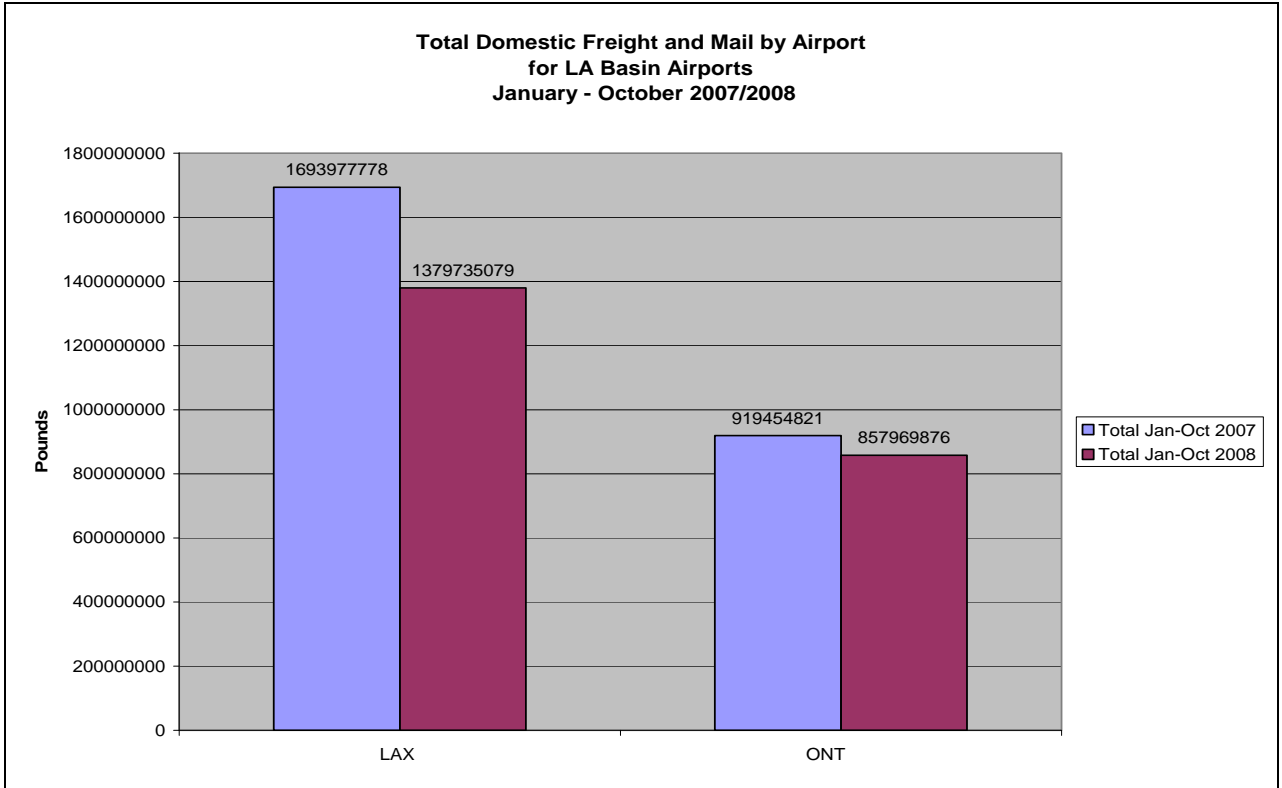
Based on DOT Traffic Data



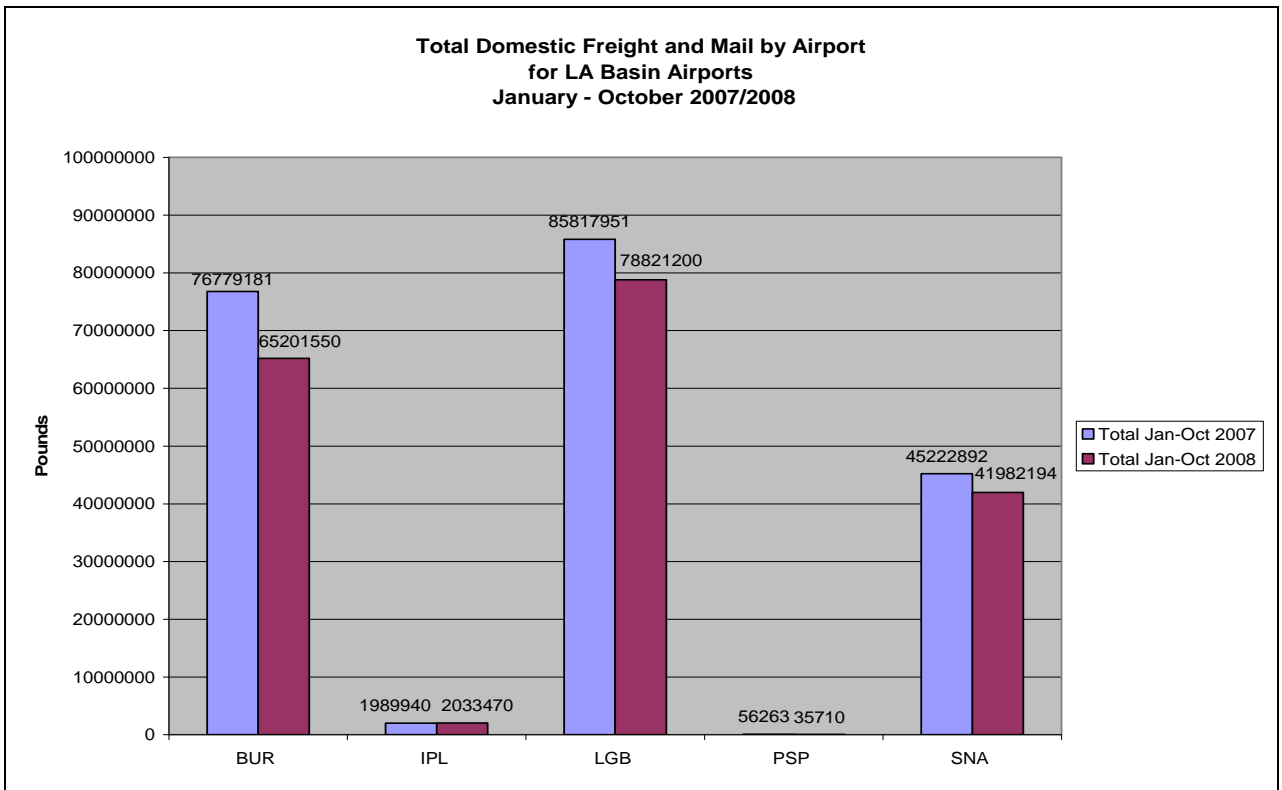
Based on DOT Traffic Data



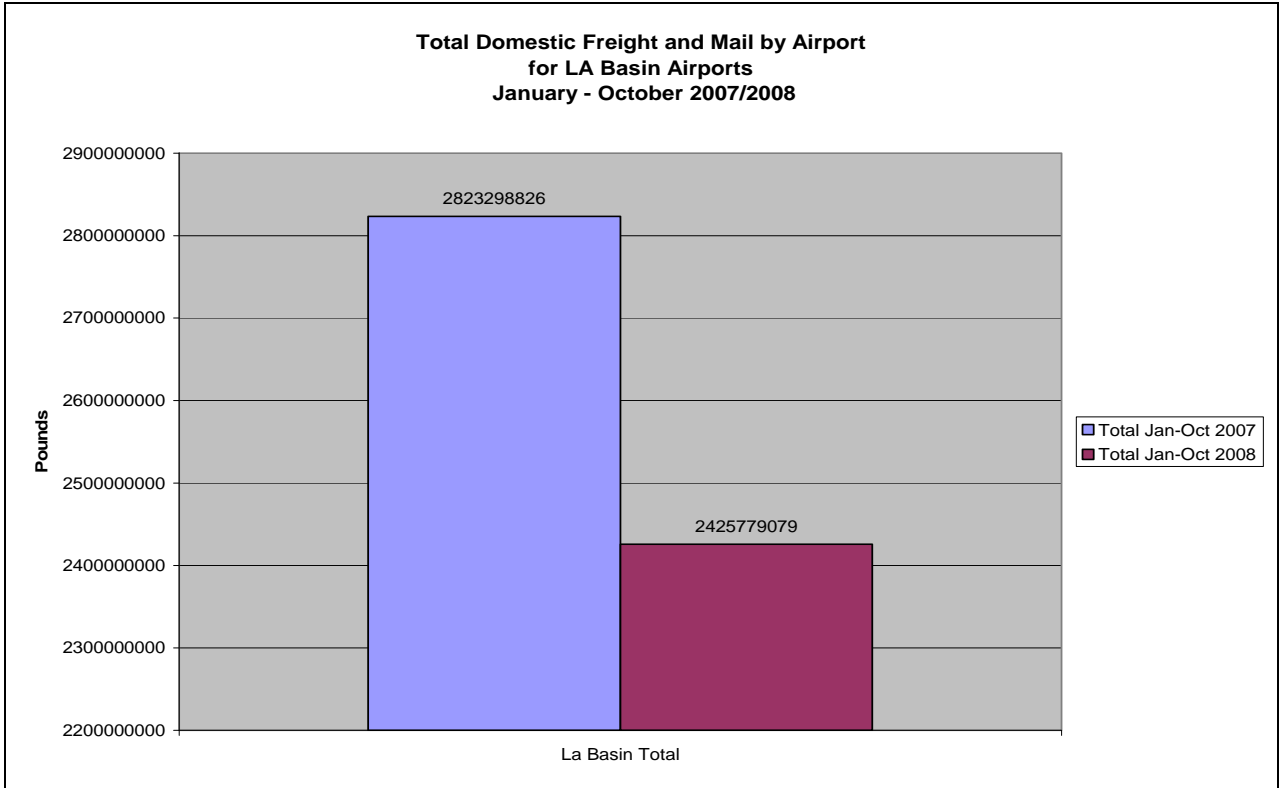
Based on DOT Traffic Data



Based on DOT Traffic Data



Based on DOT Traffic Data

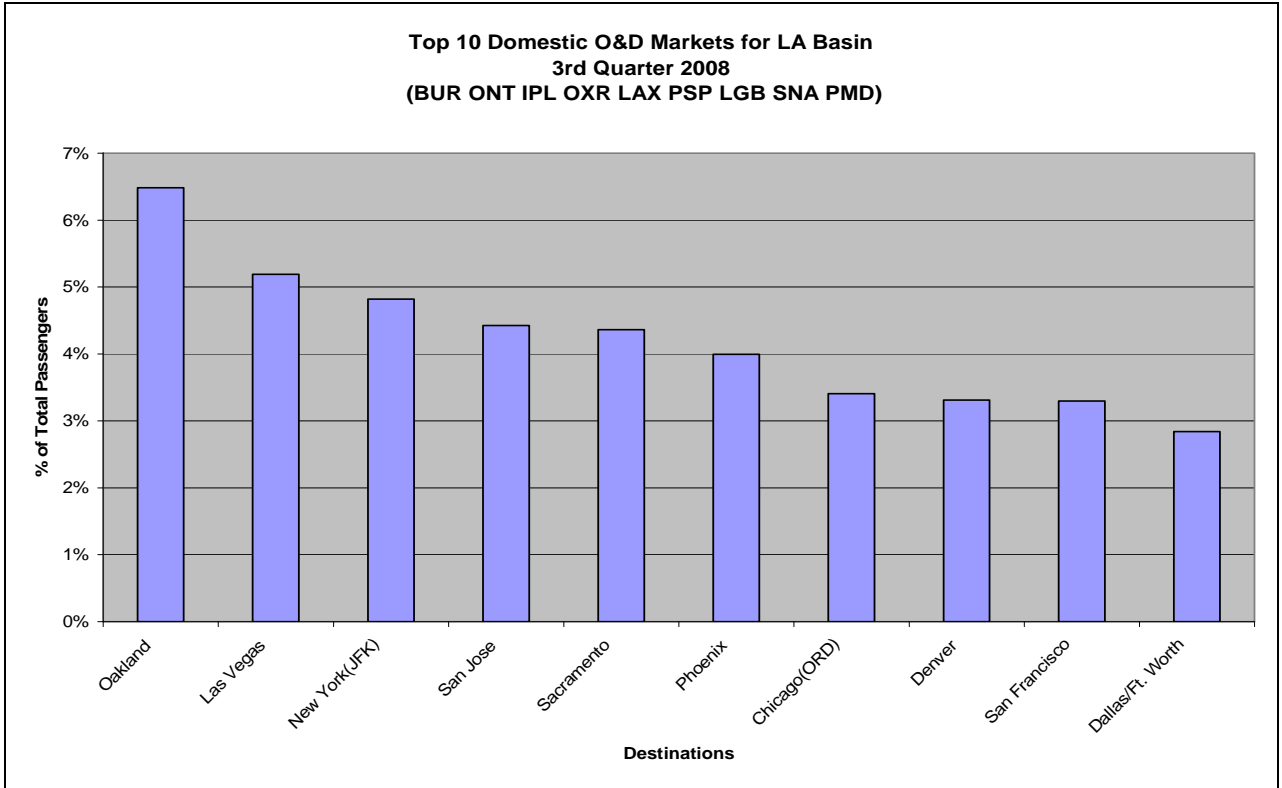


Based on DOT Traffic Data

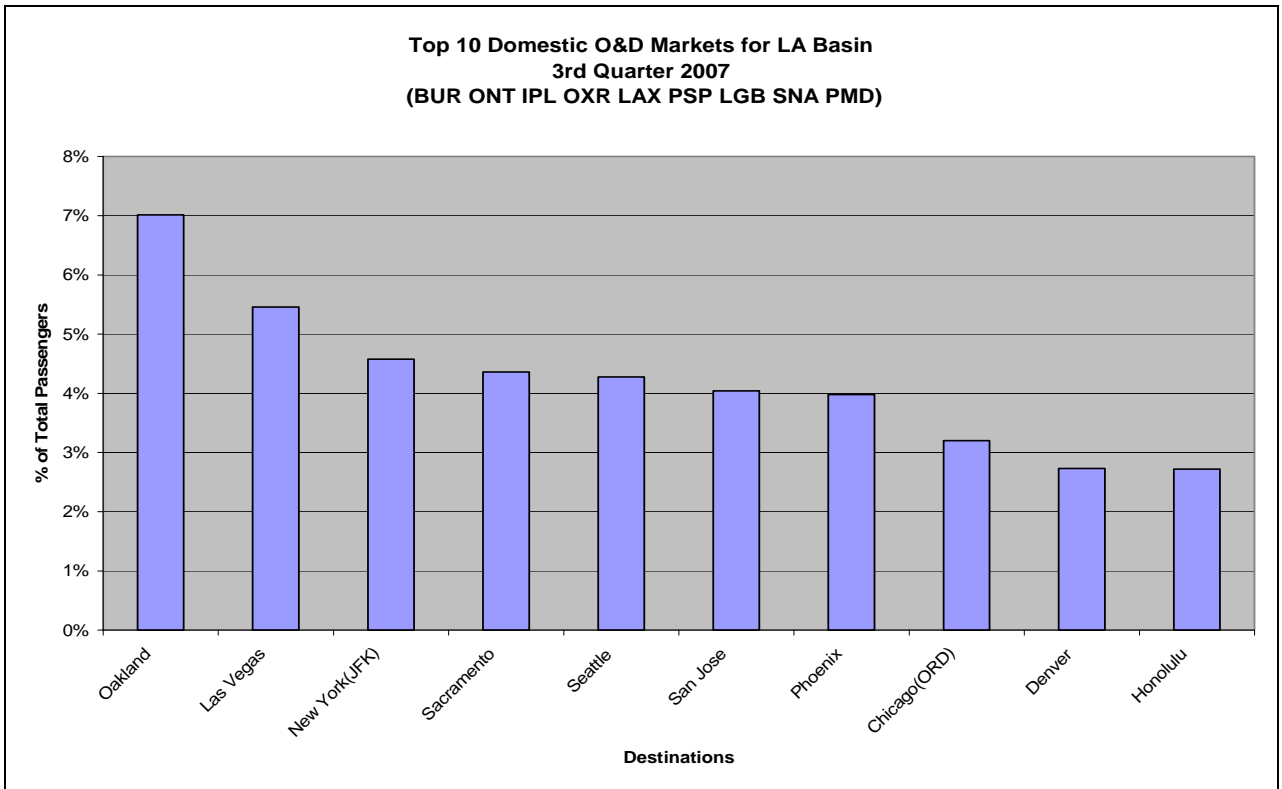
Total Available Seats
by Departure Airport and Total LA Basin

Origin Airport	4th Quarter 2007	4th Quarter 2008
LAX	10,072,227	8,790,850
SNA	1,708,097	1,441,224
BUR	1,071,204	942,628
ONT	1,278,005	903,041
LGB	440,540	448,409
PSP	296,517	253,736
OXR	10,080	9,510
PMD	8,450	5,100
IPL	10,080	5,040
Total	14,895,200	12,799,538

Based on Schedules Data

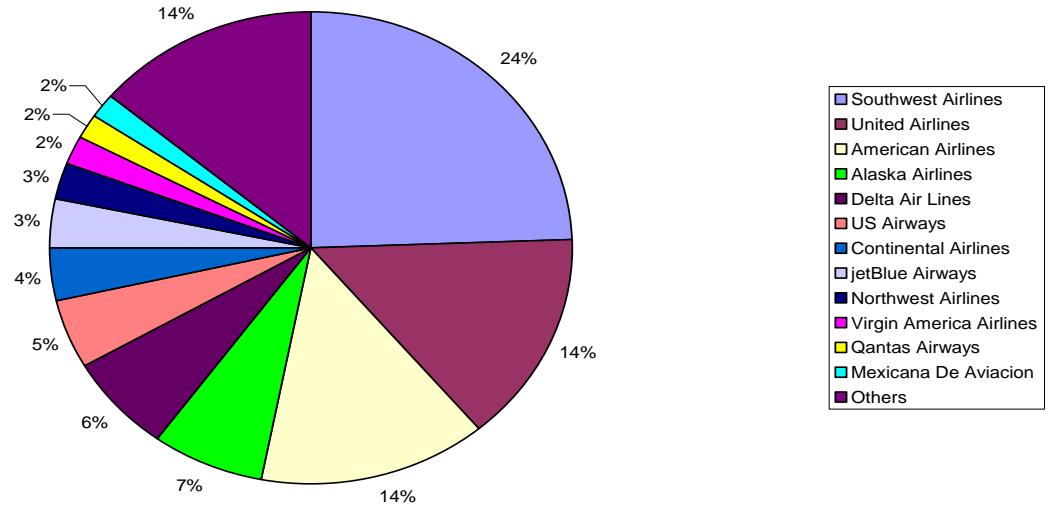


Based on DOT Traffic



Based on DOT Traffic

**Market Share by Departing Seats for LA Basin
4th Quarter 2008
(BUR ONT IPL OXR LAX PSP LGB SNA PMD)**



Based on Schedules Data

Domestic Load Factors by Airport and Total LA Basin

Narrow body Aircraft

Origin Airport	Jan - Oct 2007	Jan - Oct 2008
BUR	70.53%	66.78%
LAX	77.84%	77.55%
LGB	77.49%	78.21%
ONT	72.09%	70.42%
PMD	No Service	42.00%
		<small>ALLEGiant AIR JAN 08</small>
PSP	78.95%	78.30%
SNA	76.24%	73.84%
Total	76.18%	75.10%

Based on DOT Traffic Data

Domestic Load Factors by Airport and Total LA Basin
Regional and Turbo-Prop Aircraft

Origin Airport	Jan - Oct 2007	Jan - Oct 2008
BUR	78.61%	77.89%
IPL	51.53%	42.05%
LAX	71.08%	70.10%
LGB	78.03%	73.58%
ONT	64.38%	72.94%
OXR	53.00%	42.51%
PMD	28.87%	33.28%
PSP	73.34%	72.97%
SNA	70.69%	70.28%
Total	70.78%	70.81%

Based on DOT Traffic Data

Domestic Load Factors by Airport and Total LA Basin
Widebody Aircraft

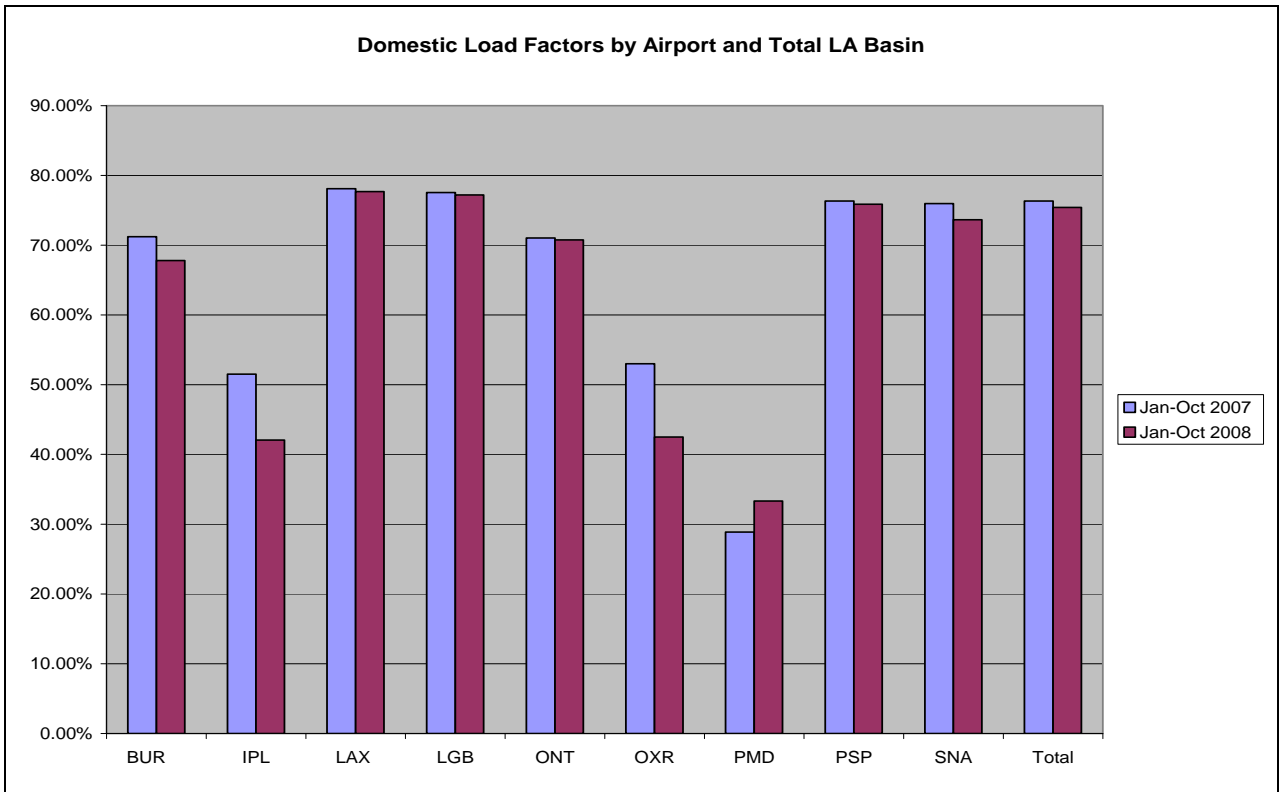
Origin Airport	Jan - Oct 2007	Jan - Oct 2008
BUR	No Service	14.22% <small>PACE AIRLINES AUG 08</small>
LAX	86.56%	86.50%
LGB	74.26% <small>UNITED AIRLINES JAN 07 OMNI AIR EXPRESS FEB 07</small>	No Service
ONT	48.36%	54.37%
PSP	No Service	64.71% <small>PACE AIRLINES JAN 08</small>
Total	86.54%	86.48%

Based on DOT Traffic Data

Domestic Load Factors by Airport and Total LA Basin

Origin Airport	Jan - Oct 2007	Jan - Oct 2008
BUR	71.19%	67.79%
IPL	51.53%	42.05%
LAX	78.09%	77.69%
LGB	77.55%	77.19%
ONT	71.04%	70.75%
OXR	53.00%	42.51%
PMD	28.87%	33.33%
PSP	76.34%	75.86%
SNA	75.94%	73.65%
Total	76.32%	75.39%

Based on DOT Traffic Data



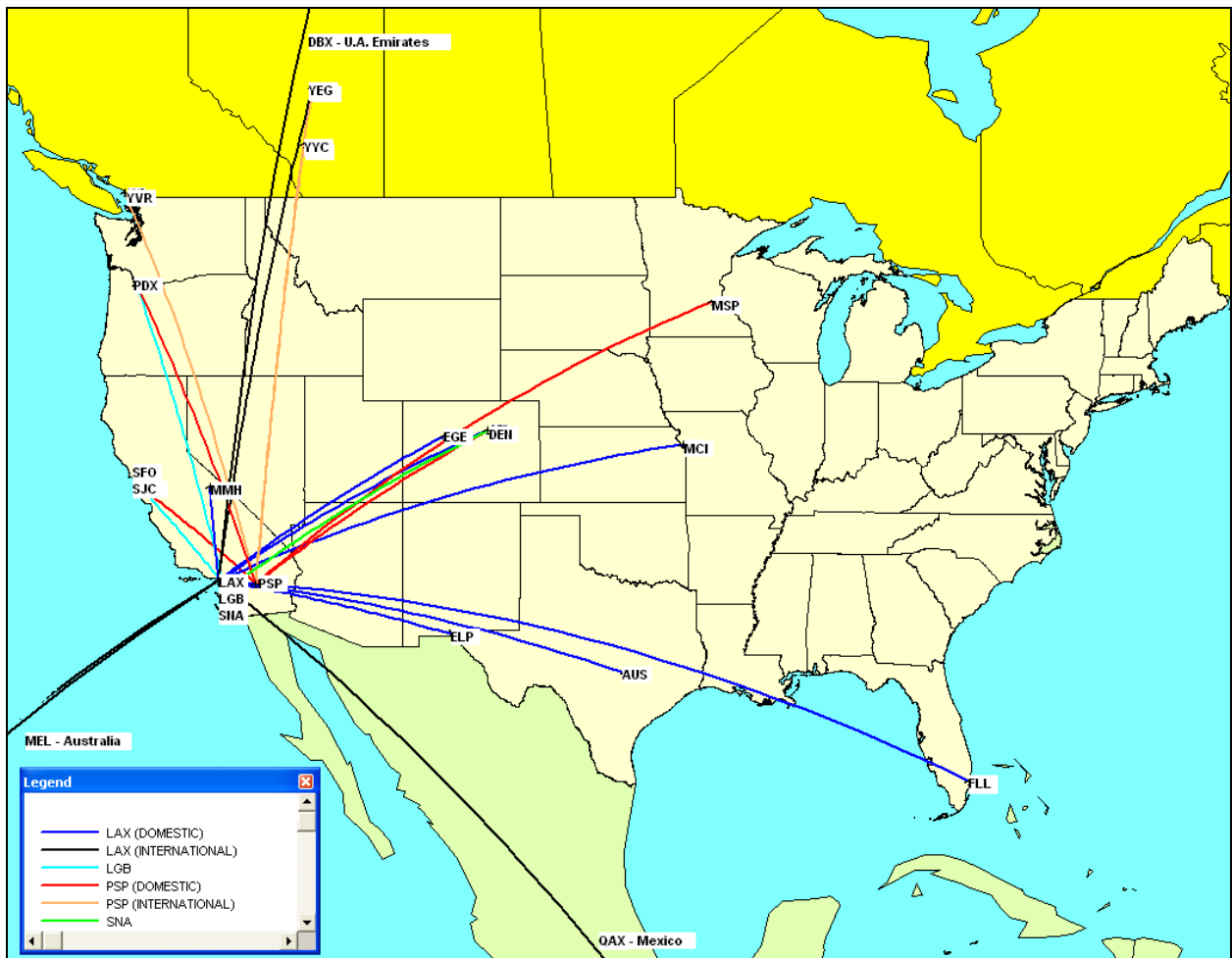
Based on DOT Traffic Data

New Non-Stop Routes from LA Basin Airports
Comparing
3rd Quarter 2008 to 4th Quarter 2008

Origin Airport	Destination Airport	Operating Carrier
LAX	Austin(Bergstrom Intl) TX	Cathay Pacific Airways
LAX	Denver(Intl) CO	Cathay Pacific Airways
LAX	Dubai U.A. Emirates	Emirates Airlines
LAX	Vail/Eagle CO	American Airlines
LAX	El Paso TX	American Eagle
LAX	Ft. Lauderdale(Intl) FL	Delta Air Lines
LAX	Kansas City(Intl) MO	Republic Airline
LAX	Melbourne(Intl) Australia	United Airlines
LAX	Mammoth Lakes CA	Horizon Air
LAX	Oaxaca Mexico	Mexicana De Aviacion
LAX	Edmonton(Intl) Canada	WestJet
LGB	Portland OR	jetBlue Airways
LGB	San Francisco(Intl) CA	jetBlue Airways
PSP	Denver(Intl) CO	United Airlines
PSP	Denver(Intl) CO	United for TED
PSP	Minneapolis/St. Paul(Intl) MN	Sun Country Airlines
PSP	Minneapolis/St. Paul(Intl) MN	Northwest Airlines
PSP	Portland OR	Alaska Airlines
PSP	San Jose CA	Horizon Air
PSP	Edmonton(Intl) Canada	WestJet
PSP	Vancouver(Intl) Canada	WestJet
PSP	Calgary Canada	WestJet
SNA	Denver(Intl) CO	Southwest Airlines

Based on Schedules Data

New Non-Stop Routes from LA Basin Airports Comparing 3rd Quarter 2008 to 4th Quarter 2008



Lost Non-Stop Routes from LA Basin Airports
Comparing
3rd Quarter 2008 to 4th Quarter 2008

Origin Airport	Destination Airport	Operating Carrier
BUR	Washington(Dulles Intl) DC	jetBlue Airways
BUR	Las Vegas(Intl) NV	Mesa Airlines
LAX	Anchorage(Intl) AK	Delta Air Lines
LAX	Anchorage(Intl) AK	Alaska Airlines
LAX	Hartford(Bradley Intl) CT	Delta Air Lines
LAX	Leon/Guanajuato Mexico	ExpressJet Airlines
LAX	Boise ID	ExpressJet Airlines
LAX	Boston(Intl) MA	Delta Air Lines
LAX	Baltimore(Intl) MD	AirTran Airways
LAX	Columbus(Intl) OH	Delta Air Lines
LAX	Culiacan Mexico	ExpressJet Airlines
LAX	Denver(Intl) CO	ExpressJet Airlines
LAX	Des Moines IA	UA EXP/Skywest
LAX	Eugene OR	ExpressJet Airlines
LAX	Ft. Lauderdale(Intl) FL	American Airlines
LAX	Frankfurt Germany	Air India
LAX	Spokane(Intl) WA	Horizon Air
LAX	Spokane(Intl) WA	ExpressJet Airlines
LAX	Guatemala City Guatemala	United Airlines
LAX	Hong Kong(Intl) China	United Airlines
LAX	Hermosillo Mexico	Aeromexico
LAX	La Paz Mexico	ExpressJet Airlines
LAX	La Paz Mexico	Alaska Airlines
LAX	Las Vegas(Intl) NV	ExpressJet Airlines
LAX	Las Vegas(Intl) NV	Singapore Airlines

Based on Schedules Data

Lost Non-Stop Routes from LA Basin Airports
 Comparing
 3rd Quarter 2008 to 4th Quarter 2008
 (Continued)

Origin Airport	Destination Airport	Operating Carrier
LAX	Loreto Mexico	ExpressJet Airlines
LAX	Milwaukee WI	Midwest Airlines
LAX	Milwaukee WI	AirTran Airways
LAX	Mazatlan Mexico	ExpressJet Airlines
LAX	Oakland CA	ExpressJet Airlines
LAX	Portland OR	ExpressJet Airlines
LAX	Phoenix(Intl) AZ	ExpressJet Airlines
LAX	Reno NV	ExpressJet Airlines
LAX	San Antonio TX	American Airlines
LAX	Seattle/Tacoma(Intl) WA	ExpressJet Airlines
LAX	San Francisco(Intl) CA	ExpressJet Airlines
LAX	San Jose CA	ExpressJet Airlines
LAX	Sacramento(Metro) CA	ExpressJet Airlines
LAX	St. Louis(Intl) MO	Southwest Airlines
LAX	Torreon Mexico	ExpressJet Airlines
LAX	Tulsa OK	UA EXP/Skywest
LAX	Tucson AZ	ExpressJet Airlines
LAX	Zacatecas Mexico	ExpressJet Airlines
LAX	Manzanillo Mexico	ExpressJet Airlines

Based on Schedules Data

Lost Non-Stop Routes from LA Basin Airports
Comparing
3rd Quarter 2008 to 4th Quarter 2008
(Continued)

Origin Airport	Destination Airport	Operating Carrier
LGB	Fresno(Yosemite Intl) CA	ExpressJet Airlines
LGB	Monterey CA	ExpressJet Airlines
LGB	Reno NV	ExpressJet Airlines
ONT	Albuquerque NM	ExpressJet Airlines
ONT	Austin(Bergstrom Intl) TX	ExpressJet Airlines
ONT	Boise ID	ExpressJet Airlines
ONT	Colorado Springs CO	ExpressJet Airlines
ONT	El Paso TX	ExpressJet Airlines
ONT	Fresno(Yosemite Intl) CA	ExpressJet Airlines
ONT	Spokane(Intl) WA	ExpressJet Airlines
ONT	New York(Kennedy) NY	jetBlue Airways
ONT	Las Vegas(Intl) NV	US Airways
ONT	Kansas City(Intl) MO	ExpressJet Airlines
ONT	Monterey CA	ExpressJet Airlines
ONT	Oklahoma City(Rogers) OK	ExpressJet Airlines
ONT	Omaha NE	ExpressJet Airlines
ONT	Reno NV	ExpressJet Airlines
ONT	San Antonio TX	ExpressJet Airlines
ONT	Seattle/Tacoma(Intl) WA	Horizon Air
ONT	Salt Lake City UT	Delta Air Lines
ONT	Salt Lake City UT	ExpressJet Airlines
ONT	Tulsa OK	ExpressJet Airlines
ONT	Tucson AZ	ExpressJet Airlines
PSP	Las Vegas(Intl) NV	Mesa Airlines
SNA	Austin(Bergstrom Intl) TX	American Airlines

Based on Schedules Data

Changes in Aircraft Type at LA Basin Airports
Comparing
3rd Quarter 2008 to 4th Quarter 2008

Airport	New Aircraft	Lost Aircraft
LAX	388 - AIRBUS INDUSTRIE A380-800	
LAX	77L - BOEING 777-200LR	
LAX	773 - BOEING 777-300	
LAX	E70 - EMBRAER 170	
LGB		M80 - BOEING (DOUGLAS) MD80
LGB		ERJ - EMBRAER RJ 135/140/145
ONT	321 - AIRBUS INDUSTRIE A321	
ONT		ERJ - EMBRAER RJ 135/140/145
PMD		CRJ - CANADAIR REGIONAL JET
PSP	32S - AIRBUS INDUSTRIE A318/319/320/321	
PSP	319 - AIRBUS INDUSTRIE A319	
PSP	320 - AIRBUS INDUSTRIE A320	
PSP	735 - BOEING 737-500	
PSP	73W - BOEING 737-700 (WINGLETS)	
PSP	738 - BOEING 737-800	
PSP	739 - BOEING 737-900	
SNA		M83 - BOEING (DOUGLAS) MD-83

Based on Schedules Data

Changes in Airlines at LA Basin Airports
Comparing
3rd Quarter 2008 to 4th Quarter 2008

Airport	New Airline	Lost Airline
LAX	EK - Emirates Airlines	
LAX	RW - Republic Airline	
LAX		AI - Air India
LAX		XE - ExpressJet Airlines
LGB		XE - ExpressJet Airlines
ONT		XE -ExpressJet Airlines
ONT		B6 - jetBlue Airways
PSP	NW - Northwest Airlines	
PSP	SY - Sun Country Airlines	
PSP	UA - United Airlines	
PSP	United for TED	
PSP	WS - WestJet	

Based on Schedules Data