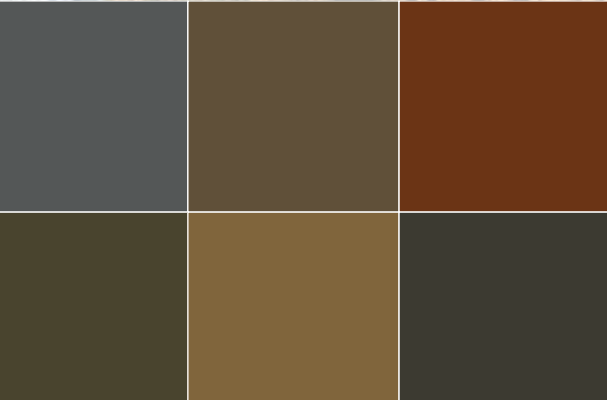
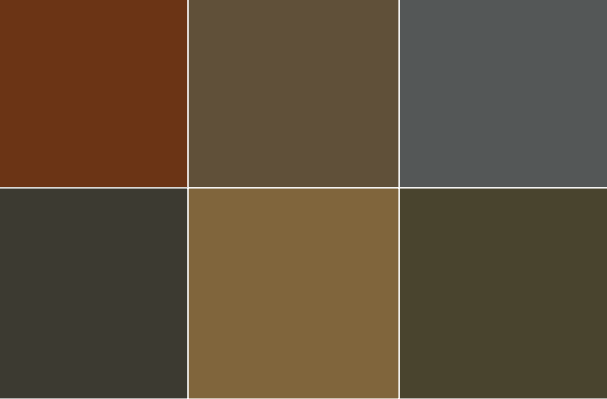




2008 – 2009

**YOUR GUIDE
TO SCAG**



Leadership

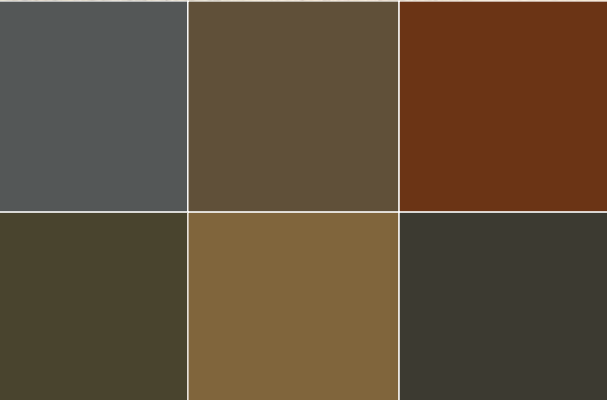
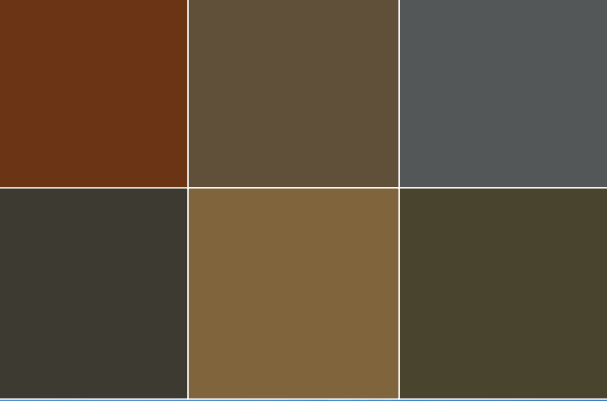
Vision

Progress

Leadership, **vision** and **progress** which promote economic growth, personal well-being, and livable communities for all Southern Californians.

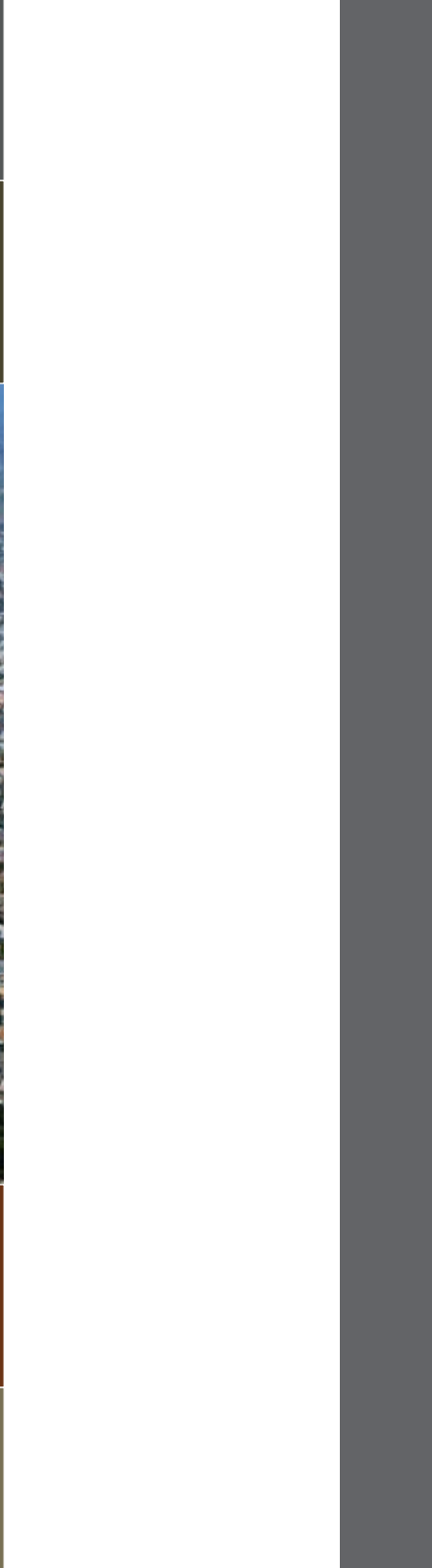
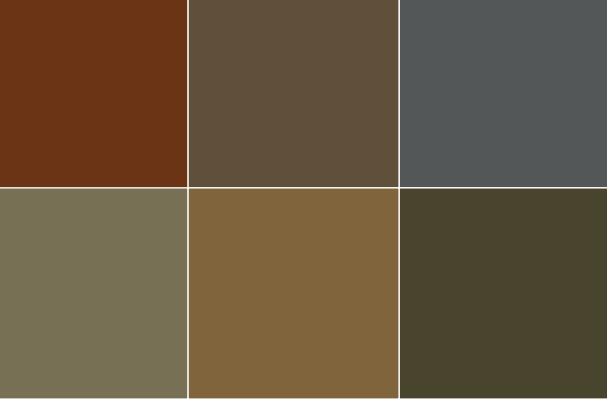
The Association will accomplish this Mission by:

- ✦ Developing long-range regional plans and strategies that provide for efficient movement of people, goods and information; enhance economic growth and international trade; and improve the environment and quality of life.
- ✦ Providing quality information services and analysis for the region.
- ✦ Using an inclusive decision-making process that resolves conflicts and encourages trust.
- ✦ Creating an educational and work environment that cultivates creativity, initiative and opportunity.



| CONTENTS

MESSAGE FROM SCAG'S PRESIDENT	1
SCAG – THE BIG PICTURE.....	3
OVER FORTY YEARS OF RESOLVING REGIONAL CHALLENGES.....	5
THE REGION IN ACTION	9
WORKING WITH THE SUBREGIONS	13
PUBLIC INVOLVEMENT.....	15
KEY INITIATIVES.....	19
PARTNERS IN PLANNING	27
FUNDING SOURCES	27
FREQUENTLY ASKED QUESTIONS	29
PRESENTATIONS TO YOUR ORGANIZATION OR COMMUNITY	33
CONTACTING SCAG.....	35
SCAG REGIONAL COUNCIL DISTRICTS	36
SCAG MEMBERS.....	39
SCAG REGIONAL COUNCIL MEMBERS.....	41



| MESSAGE FROM SCAG'S PRESIDENT

Six counties. 188 cities. 14 subregions. 38,000 square miles. 18 million residents, and growing. Southern California is not only the nation's largest region in terms of both population and size, it is also the most socially, culturally and economically diverse region in the world. Southern California's population is larger than many states, and if the region were its own country, it would have the 15th largest economy in the world. Southern California's trade infrastructure is a global gateway that serves the rest of the nation. The Ports of Los Angeles and Long Beach combined are the world's fifth busiest port complex. By the year 2035, our region will add another five million residents to our total population – adding nearly the equivalent of two Chicago's to the region.

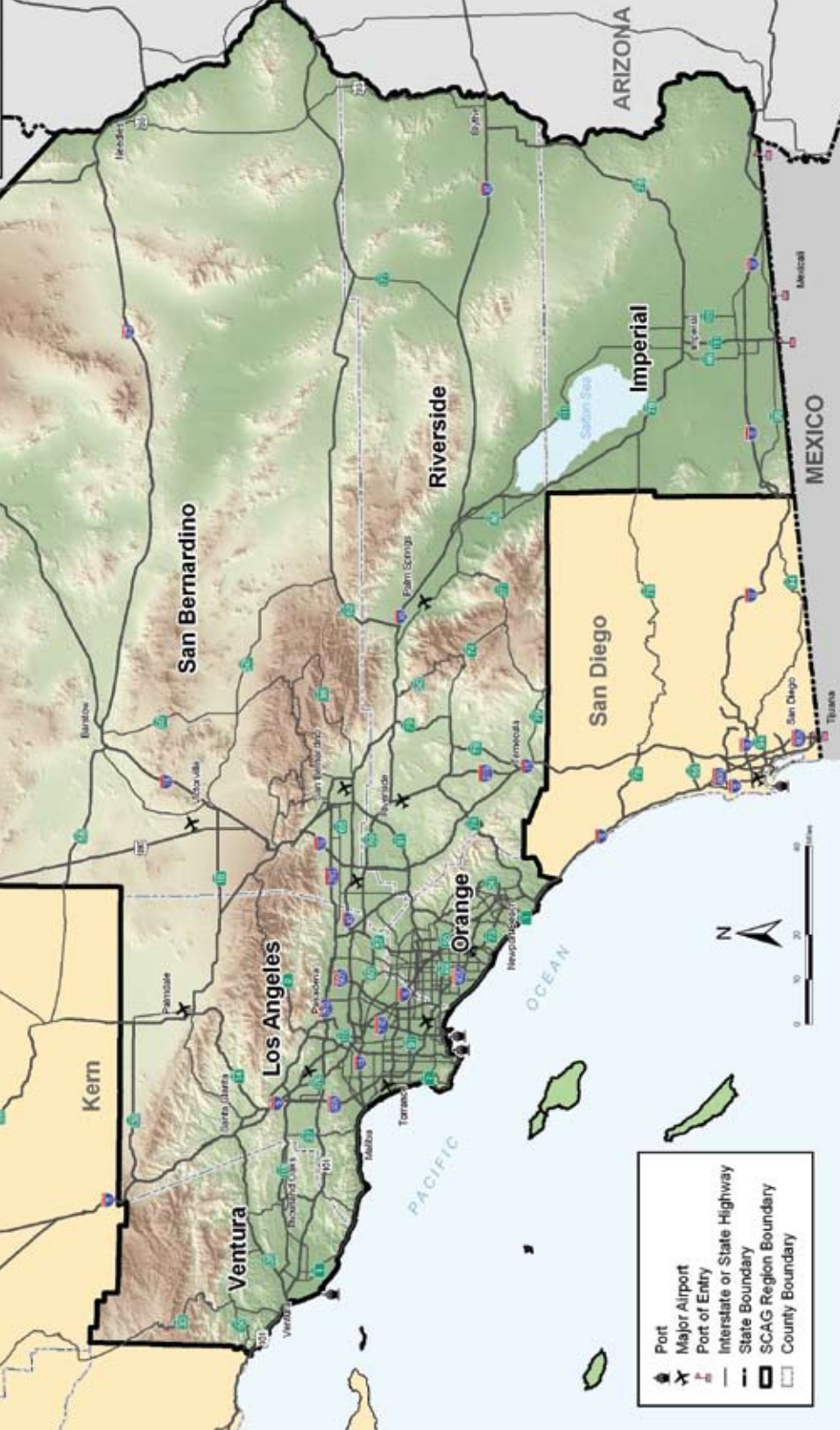
Southern California is one of the nation's top entertainment and tourist destinations, but also so much more, with world-class universities and lively communities that foster an unprecedented mix of cultures, languages and ethnicities. Ports and airports play a critical role in the local, national and international economies, all of which provide economic and quality-of-life benefits for our residents.



A handwritten signature in black ink that reads "Richard Dixon". The signature is written in a cursive, flowing style.

Hon. Richard Dixon

SCAG President
Councilmember
City of Lake Forest



THE SCAG REGION

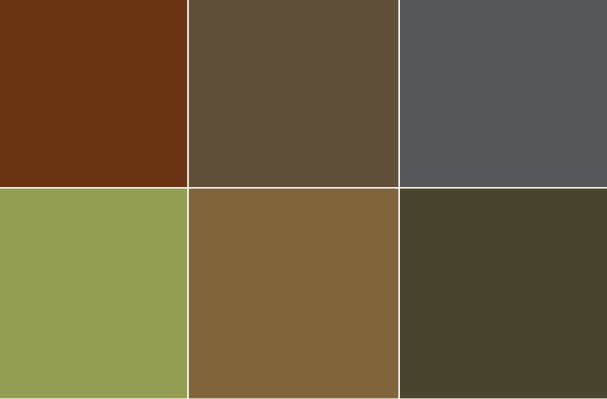
| SCAG – THE BIG PICTURE

But many of the challenges faced by Southern California cross our city and county borders. Our transportation network simply cannot keep up with the ever-growing demand. Air pollution generated in one community can impact residents living 100 miles away. Land use decisions made in one city can have traffic, environmental and economic impacts on other communities and the region as a whole.

Issues such as these require local leaders to come together and develop regional solutions. It is for these reasons that the Southern California Association of Governments (SCAG) formed over forty years ago.

SCAG is the nation's largest Metropolitan Planning Organization, representing the six counties (Imperial, Los Angeles, Orange, Riverside, San Bernardino and Ventura) and 188 cities that make up the Southern California region. SCAG has increasingly served as a unifying voice for Southern California, advocating for regional priorities in Sacramento and Washington, D.C.

SCAG is dedicated to developing regional solutions for the many transportation, air quality, housing, land use and other issues facing Southern California.



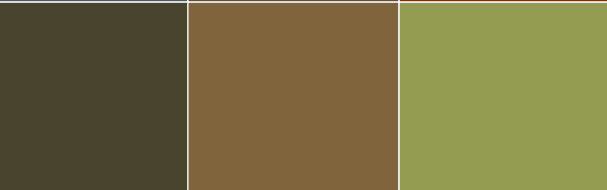
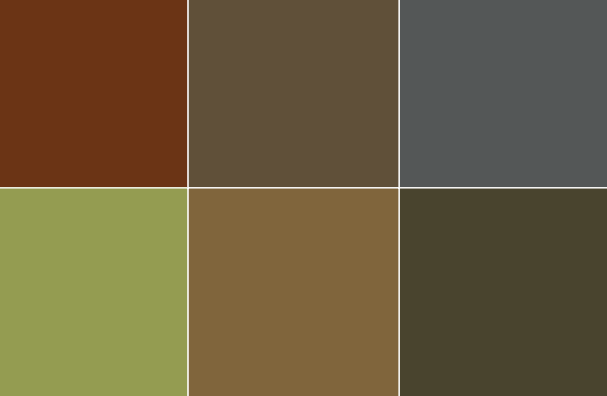
| OVER FORTY YEARS OF RESOLVING REGIONAL CHALLENGES

BACKGROUND

SCAG was founded on October 28, 1965, when local elected officials from 56 cities and five counties first convened to begin regional planning for Southern California's future. SCAG has been designated a joint powers authority (JPA) established under California law, meaning that it is an association of local governments and agencies who voluntarily come together on issues of common concern.

SCAG is mandated by the federal and state government to develop regional plans for transportation, growth management, housing development, air quality and other issues of regional significance. SCAG expanded the Executive Committee in 1992 to a 70-member Regional Council to help accommodate new responsibilities mandated by the federal and state government, as well as to provide more broad-based representation of Southern California's cities and counties. With its expanded membership structure, SCAG created regional districts to correspond to the population size of cities.

In addition to the six counties and 188 cities that make up SCAG's region, there are five County Transportation Commissions and the Imperial Valley Association of Governments, who hold the primary responsibility for programming and administering transportation projects, programs and services in their respective counties. Recently, SCAG adopted historic changes to its bylaws to provide Native American tribes a formal voice in the regional planning process, including representation on the Regional Council and policy committees.



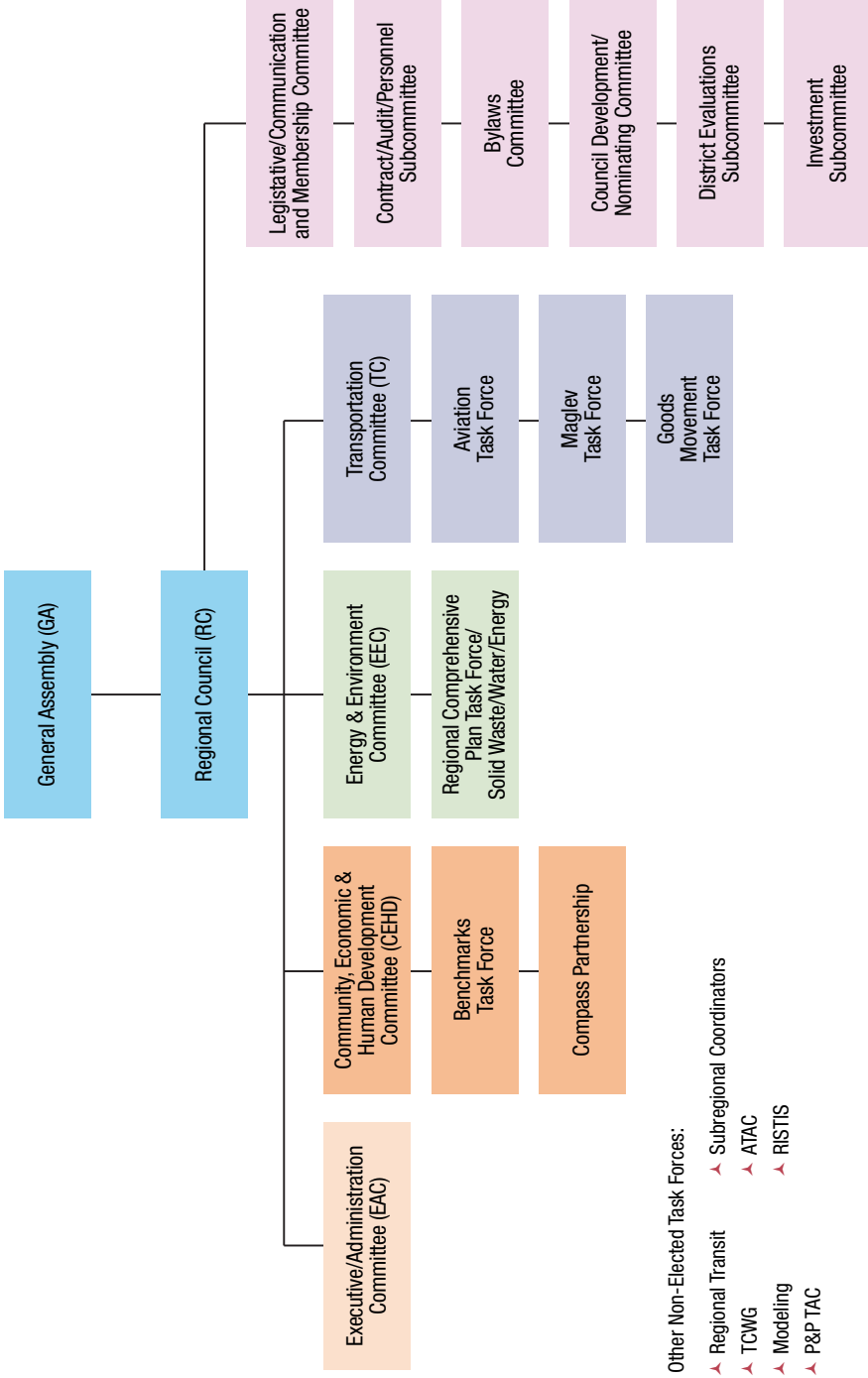
| OVER FORTY YEARS OF RESOLVING REGIONAL CHALLENGES (CONT.)

THE MANY FACES OF REGIONAL PLANNING

Under federal and state law, SCAG is designated as a Metropolitan Planning Organization (MPO), a Regional Transportation Planning Agency (RTPA) and a Council of Governments (COG). In these roles, SCAG is responsible for identifying Southern California's transportation priorities through development of Regional Transportation Plans.

SCAG has many other roles and authorities to develop short- and long-term regional plans for transportation, housing and air quality that conform to state and federal standards. It also is responsible for implementing the state Regional Housing Needs Assessment program on behalf of Southern California in an effort to establish goals for future housing needs. SCAG conducts extensive growth forecasting and provides local governments with critical land use and demographic data to strengthen their planning efforts.

SCAG employs planners, policy formulators, forecasters and other expert staff to undertake its various initiatives intended to address many of the policy and planning challenges facing Southern California.



REGIONAL COUNCIL COMMITTEES AND TASK FORCES

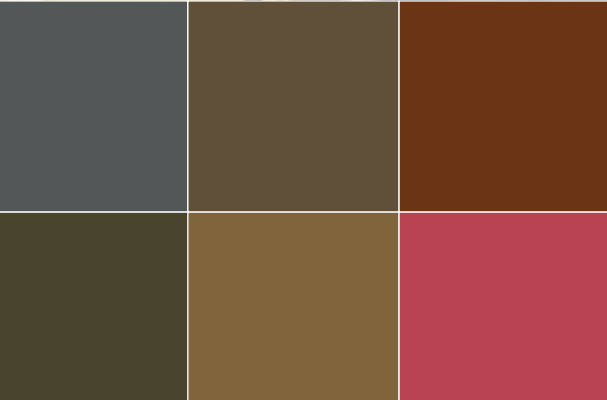
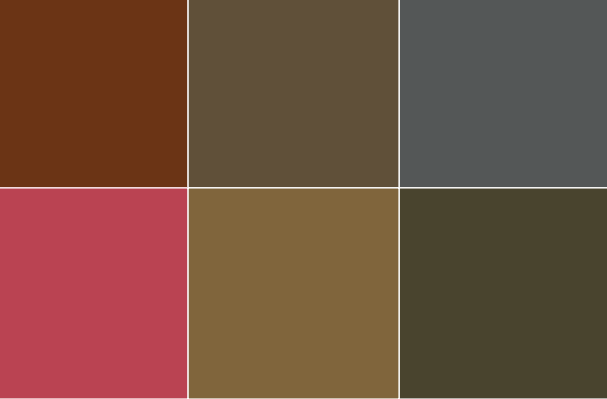
| THE REGION IN ACTION

General Assembly (GA) – SCAG is governed by the General Assembly, which annually brings together the official representatives of SCAG’s membership and helps set the agency’s course for the coming year. It is in this forum where policy matters can be identified and addressed. Amendments to SCAG’s Bylaws also may be considered at the General Assembly. In addition, members of the General Assembly consider adoption of SCAG’s General Fund budget for the next fiscal year. Finally, SCAG’s incoming President, Vice President and Second Vice President are announced.

Regional Council (RC) – Decision-making occurs through SCAG’s Regional Council, a governing body comprised of elected officials representing the six counties and 188 cities in the SCAG region. The board also includes representatives from each of the County Transportation Commissions and the recognized tribal governments. SCAG’s policy-making process is guided by the work of three Policy Committees: Transportation; Community Economic and Human Development; and Energy and Environment, and its operations are managed by the Executive/Administration Committee. Members of the Regional Council serve on one of three policy committees for two-year terms. Much of the discussion and debate on the “nuts and bolts” of an issue occurs in the policy committees, and all issues considered by the Regional Council must first originate through one or more of the committees. In addition to Regional Councilmembers, policy committees also include members from stakeholder organizations throughout the region.

Transportation Committee (TC) – The TC examines regional policies, programs and other matters pertaining to roads and highways, transit, airports and seaports and other aspects of Southern California’s transportation system.

Community, Economic and Human Development Committee (CEHD)
The CEHD oversees the agency’s efforts to develop regional policies for housing, economic development, land use, growth forecasting and other community development needs.



| THE REGION IN ACTION (CONT.)

Energy and Environment Committee (EEC) – The EEC considers environmental and energy-related issues of regional significance, including air and water quality, solid and hazardous waste, habitat preservation, environmental justice and environmental impact analysis.

Executive/Administration Committee (EAC) – In addition to the policy committees, SCAG’s core leadership team is represented by the EAC. In addition to their critical position in guiding SCAG’s regional decision-making process, EAC members play an elevated role as SCAG representatives throughout the region as well as at the state and federal levels. The EAC also deals with matters regarding human resources, budgets, finance, operations, communications and any other matter referred by the Regional Council. Membership primarily includes SCAG officers, policy committee chairs and vice chairs.

Policy Task Forces/Subcommittees – In addition to the three policy committees, the Regional Council has established a number of task forces and subcommittees to provide more focused attention to specific policy or planning issues:

- ▲ Aviation Task Force
- ▲ Benchmarks Task Force
- ▲ Bylaws Committee
- ▲ Compass Partnership
- ▲ Contract/Audit/Personnel Subcommittee
- ▲ Council Development/Nominating Committee
- ▲ District Evaluations Subcommittee
- ▲ Goods Movement Task Force
- ▲ Investment Subcommittee
- ▲ Legislative/Communication and Membership Committee
- ▲ Maglev Task Force
- ▲ Modeling Task Force
- ▲ Regional Comprehensive Plan Task Force/Solid Waste/Water/Energy



| WORKING WITH THE SUBREGIONS

In 1992, when representation on the Regional Council was expanded from the original Executive Committee, SCAG adopted a more inclusive, collaborative approach to planning by fostering the development of subregional organizations that would represent smaller segments within Southern California. Fourteen subregions were created to represent portions of Southern California with shared interests, issues and geography. Some subregions are very active and organized, acting as their own Councils of Government. Other subregions, while involved in regional activities, may not have the same type of organizational structure. SCAG provides funding and assistance to the subregions to facilitate a more collaborative regional planning effort.

Subregions play a vital role as a conduit between SCAG and the cities and counties of the region by participating and providing input in all of SCAG's planning activities. With the input and participation received from the subregions, the Regional Council and its committees make better-informed decisions.



| PUBLIC INVOLVEMENT

The public plays a key role in every aspect of SCAG's regional planning efforts. SCAG implements a public involvement process to provide complete information, timely public notice and full public access to key decisions and to support early and continuing public involvement in developing its regional plans. Furthermore, SCAG seeks to ensure that minority and low-income populations are involved in the regional planning process. There are a variety of ways to become involved, including:

Citizen Review and Feedback – SCAG regularly circulates its *Regional Transportation Plan (RTP)*, *Regional Transportation Improvement Program (RTIP)*, *Overall Work Program (OWP)* and its other regional initiatives for extensive public review and feedback. SCAG regularly hosts conferences, workshops and other public forums where the public is encouraged to attend and interact with SCAG decision-makers and policy experts.

Public Comments – SCAG welcomes the public to address its council and policy committees at the beginning of every monthly Regional Council, policy committee meetings and other open, public meetings.

Regional Representation – SCAG's entire policy-making process is based on a structure that accommodates Southern California's unique size and diversity. Local elected officials throughout Southern California serve on SCAG's Regional Council to represent one or more communities within the region. To find out who serves on the Regional Council, please visit www.scag.ca.gov/committees/rc_about.htm.

To request a SCAG presentation to your organization or community, please see page 35.



**SOUTHERN CALIFORNIA
ASSOCIATION of GOVERNMENTS**
Resolving Regional Challenges

Home About Us What's New Committees Meeting Agendas

PROGRAMS

Welcome to the SCAG

Comp
Envir
Housi
Legisl
Trans
RES
Data
Integ
Mapp
Model
Public
SER
Find
Photo
Press

President's Message

As the 2007-2008 fiscal year draws to a close, I am pleased to report on several major awards SCAG accomplished the past year.

On April 22, SCAG's Community, Economic and Human Development Committee (CEHC) and Regional Comprehensive Plan (RCP) Task Force hosted the second in a series of public workshops at the Huntington Beach Public Library. The workshop focused on sections within the RCP that dealt with land use, open space and transportation and featured noted planner and keynote speaker Michael Freedman, who shared insights on restructuring commercial strip centers. John Reekstein, Senior Vice President of the Urban Concerns, also led a discussion sharing the perspective of one of Orange County's largest urban developers.

On May 8, SCAG's Regional Council members and assembly delegates convened at the 2008 General Assembly. I am very pleased to report that the Regional Council formally adopted the 2008 Regional Transportation Plan (RTP), and certification of the Program Environmental Impact Report (PEIR) was finalized after resolving advisory findings from the U.S. EPA. We also held an awards luncheon honoring the 2008 Regional Champions. The winners were:

- Arco Oil Services, Inc.
- Bill Hicks, founder of Bill's, Hicks & Associates, Inc.
- Dr. John Hasting of Economics and Publica, Inc.
- Norm King, director of the Leonard Transportation Center at California State University San Bernardino, and
- Henry Medrano, KLLM News Department reporter.



Tools For Local Planners

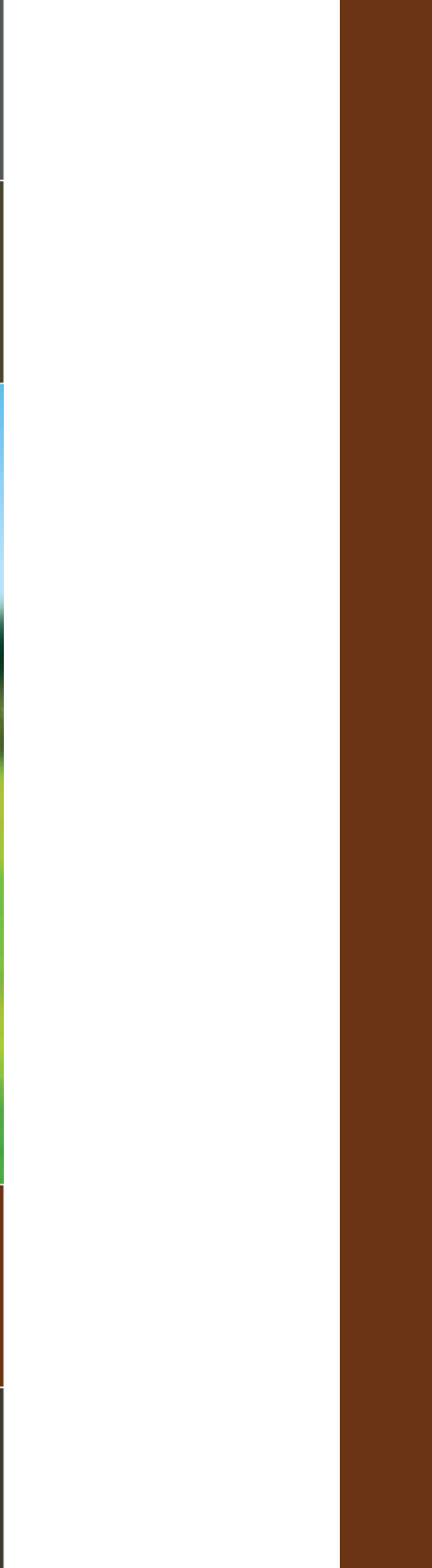
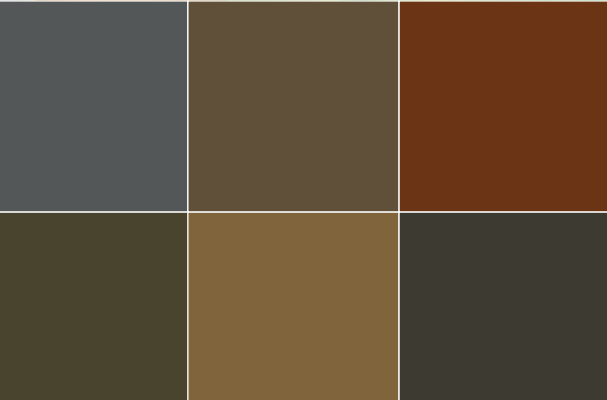
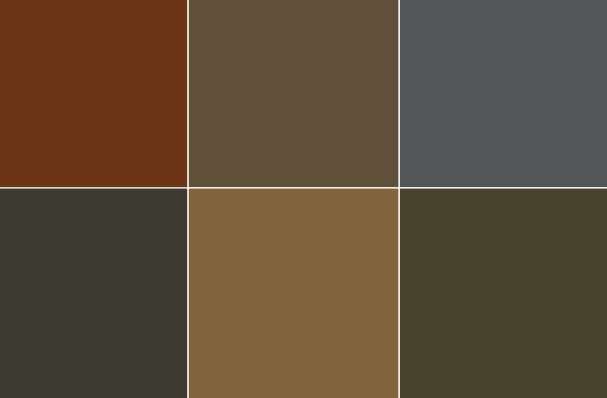
network, and how it can best handle the needs of the future. ...[read more](#)

| PUBLIC INVOLVEMENT (CONT.)

On-line Public Access – SCAG’s web site (www.scag.ca.gov) serves as the comprehensive source for all of SCAG’s current and recent regional planning initiatives.

SCAG’s web site lists its major programs and initiatives, agendas for Regional Council and policy committee meetings, policy fact sheets and other informational resources. On its “Get Involved” web page, SCAG encourages public involvement through its survey on important issues in Southern California, a Public Participation Form and a Calendar of upcoming SCAG events.

In addition to the web site, SCAG also produces *eVision*, an electronic newsletter that provides regular updates on current SCAG planning initiatives, legislative efforts, upcoming events and other information of interest to Southern Californians. If you would like to subscribe to this free publication, send an e-mail to: evision@scag.ca.gov, or check out the latest edition at www.scag.ca.gov/eVision.



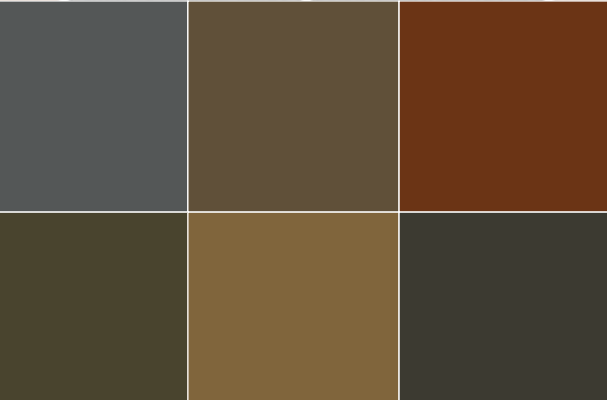
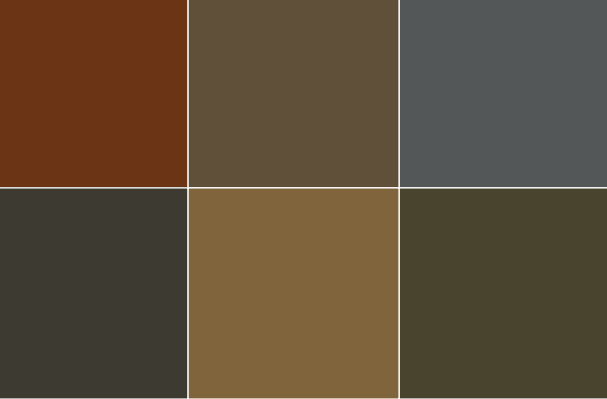
| KEY INITIATIVES

AIR QUALITY

Air quality remains a serious issue in Southern California, and SCAG continues to work closely with its regional partners including the California Air Resources Board (ARB) and the South Coast Air Quality Management District (AQMD) to help clear the region's air. SCAG plays an integral role in air quality planning by providing transportation activity and socio-economic data to local air districts and ARB for numerous non-attainment areas in the SCAG region, including the South Coast Air Basin, the Ventura County portion of the South Central Coast Air Basin, Mojave Desert Air Basin, and the Coachella Valley and Imperial County portions of the Salton Sea Air Basin. These data are used to update on-road emissions models and to develop State Implementation Plans (SIP).

SCAG also is responsible for preparation of conformity determinations for the RTP and RTIP. Transportation conformity is required under the federal Clean Air Act to ensure that federally supported highway and transit project activities conform to the purpose of the SIP. Conformity analysis is a complicated and challenging endeavor, requiring detailed data collection, computer modeling, extensive inter-agency coordination and technical analysis. Adding to the complexity of the conformity analysis, conformity rules currently apply to 13 areas in the SCAG region, and each requires its own conformity determination. SCAG works with the regional partner agencies and the state and federal agencies to resolve numerous difficult issues in preparing the conformity analysis.

Another area where SCAG continues to make strides is in Greenhouse Gas (GHG) planning. For the first time, SCAG included a discussion of GHGs in its RTP, and more than 50 mitigation measures in the Program Environmental Impact Report (PEIR) for the RTP specifically aimed at reducing GHG emissions. In addition, SCAG continues to participate in several working groups on the topic of GHGs to find new ways to keep the region at the forefront of this emerging issue.



| KEY INITIATIVES (CONT.)

COMPASS BLUEPRINT

SCAG's Compass Blueprint is the leading forum for discussion of the region's continuing growth and for innovative planning that integrates land use and transportation decision-making. Cities, counties and others are invited to submit proposals to become a Demonstration Community as they seek creative, forward-thinking and sustainable development solutions that fit local needs and support shared regional values. Compass Blueprint's primary focus is to provide custom planning services to local governments and stakeholders. SCAG's Demonstration Projects program has partnered with more than 50 SCAG member jurisdictions on planning efforts that address local priorities and advance the regional vision of mobility, livability, prosperity and sustainability. With these projects, SCAG supplies free consultant services and sophisticated planning tools. In November 2007, SCAG kicked off Toolbox Tuesdays. This series of free monthly training classes engages the planning staff of member jurisdiction and partner agencies to develop local-level capacity for using the sophisticated software tools at the heart of the Compass Blueprint "Suite of Services."

REGIONAL TRANSPORTATION PLAN

In accordance with federal and state laws, SCAG develops a long-range *Regional Transportation Plan* (RTP) every four years. In 2008, SCAG completed the latest update to this multi-year effort. The 2008 RTP provides Southern California with a transportation vision through the year 2035 and provides a long-term investment framework for addressing the region's transportation and related challenges.

The 2008 RTP emphasizes the importance of system management, goods movement and innovative transportation financing. It looks to strategies that preserve and enhance the existing transportation system and integrate land use into transportation planning. At the same time, it dedicates more than half of the region's available funds to new projects to expand the transportation system.

The RTP combines transportation policies and projects to:

- ▲ Maximize mobility and accessibility throughout Southern California



| KEY INITIATIVES (CONT.)

- ▲ Preserve and ensure a sustainable regional transportation system
- ▲ Protect the environment, improve air quality and improve energy efficiency
- ▲ Coordinate land use and transportation investments
- ▲ Ensure travel safety, security, and reliability of our transportation system

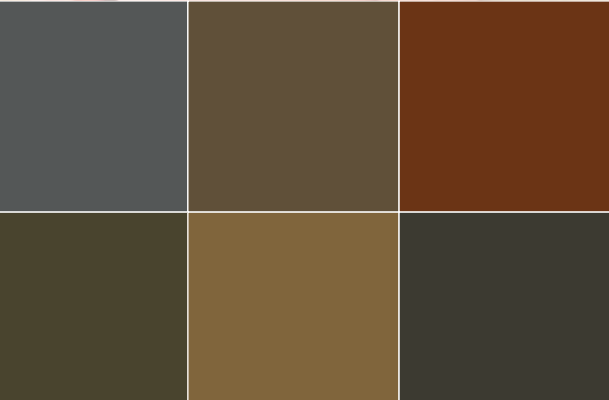
GOODS MOVEMENT

Goods movement activities provide substantial economic benefits in Southern California and can have enormous impacts on the regional transportation system, public health, the environment and quality of life for area residents. It's no surprise that these impacts have raised serious concerns throughout much of the region. SCAG continues its participation in the development of the **Multi-County Goods Movement Action Plan** (MCGMAP) led by Metro. The MCGMAP identified actions, strategies and specific next steps to improve the movement of goods throughout the region while mitigating negative impacts.

Recognizing that further regional goods movement analyses are essential to the success of the region, SCAG plans to embark on a multi-year comprehensive study to assess system gaps, performance and necessary future improvements and investments for regional freight movement.

REGIONAL COMPREHENSIVE PLAN

SCAG develops Southern California's *Regional Comprehensive Plan* (RCP) as a planning framework for the development and implementation of guidelines applied to both the public and private sectors. The RCP is a major planning effort that has been developed by the RCP Task Force and the Community Economic and Human Development Committee (CEHD). The RCP functions as a voluntary "toolbox" to assist local jurisdictions in making their General and Specific plans, as well as individual projects more sustainable. The plan includes chapters on areas such as land use and housing, open space, energy, air quality and economy.



| KEY INITIATIVES (CONT.)

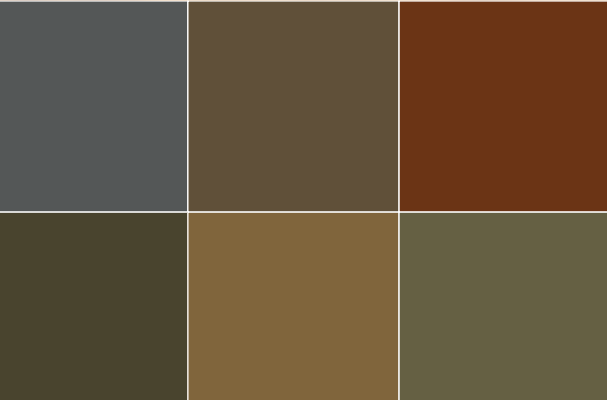
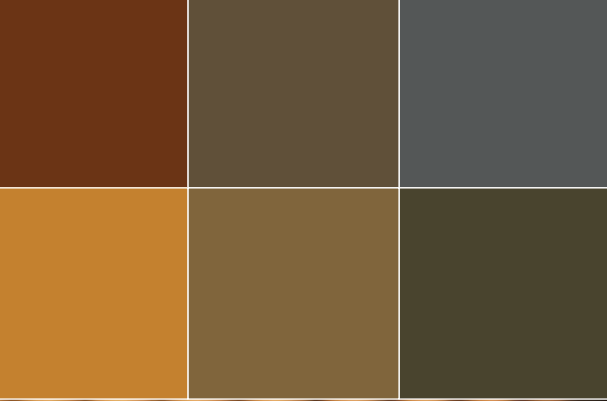
STATE OF THE REGION REPORT

Since 1998, SCAG has prepared the annual *State of the Region Report*. The report tracks the region's progress in achieving measurable goals in such policy areas as transportation, air quality, housing, employment, income, safety and education. It also compares Southern California's performance with other large metropolitan regions in the nation. 2008 marks the 10th anniversary of this report.

PAST ACCOMPLISHMENTS

SCAG's 42-year legacy of resolving regional challenges can be seen in a number of ways today:

- ▲ SCAG helped to fund the initial planning efforts by the Western Riverside Council of Governments leading to the development of a **Transportation Uniform Mitigation Fee Program** that has generated over \$400 million in revenues for transportation projects.
- ▲ SCAG played a critical role in conceptualizing what ultimately became the **Alameda Corridor** freight rail project, one of the nation's largest public works projects.
- ▲ SCAG was involved in the initial planning efforts for what ultimately became the **Metrolink** commuter rail system.
- ▲ SCAG played a key role in the implementation of a regional network of **High Occupancy Vehicle (HOV)** lanes on the Southern California freeway system, the nation's most effective HOV network.
- ▲ SCAG served as one of the founding members of the **Salton Sea Authority**.
- ▲ SCAG helped bring **Heal the Bay** to the planning table, working to ensure conformity to the Clean Water Act and improve the sewage treatment process in the region.



| PARTNERS IN PLANNING

A core objective behind SCAG's planning and policy initiatives involves close collaboration with partner organizations at the federal, state and local levels.

LOCAL PARTNERS

Transportation Commissions
Air Quality Management Districts

STATE PARTNERS

Department Of Transportation
California Council Of Governments
California Transportation Commission
California Air Resources Board
Business Transportation & Housing

FEDERAL PARTNERS

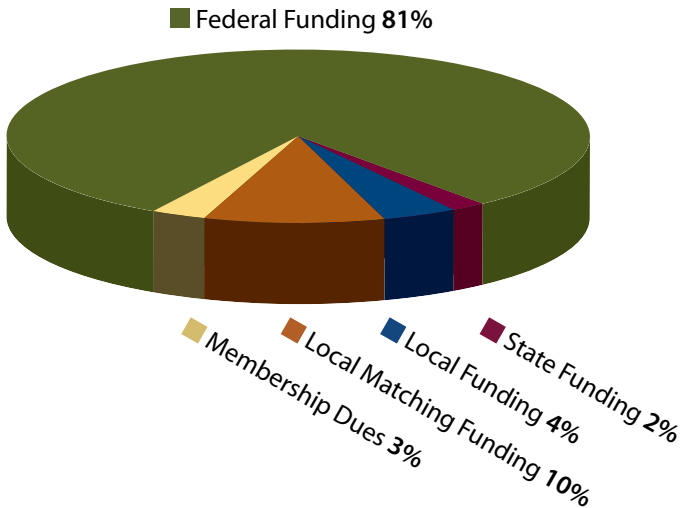
Federal Highway Administration
Federal Transit Administration
Environmental Protection Agency
Housing & Urban Development
Federal Aviation Administration
Federal Railroad Administration

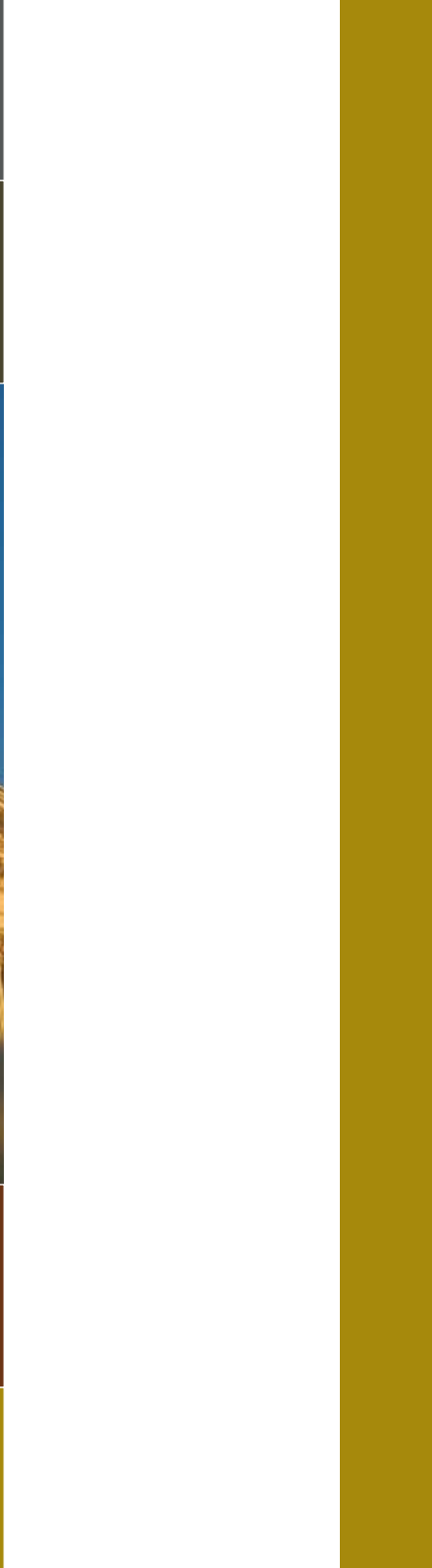
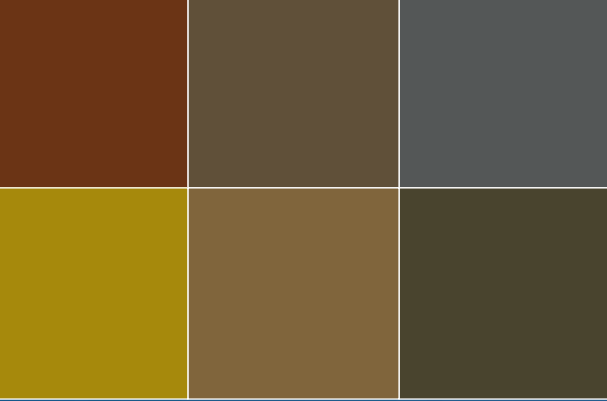
COMMUNITY PARTNERS

Planning Organizations
Transportation Organizations
Subregions
Tribal Governments
General Public

| FUNDING SOURCES

SCAG is funded by a number of different federal, state and local revenues to undertake its critical regional initiatives.





| FREQUENTLY ASKED QUESTIONS

WHAT IS A COUNCIL OF GOVERNMENTS?

A **Council of Governments (COG)** is a Joint Powers Authority (JPA) that provides a network for local governments to identify and solve local community problems. A COG is comprised of a volunteer Board of Directors representing all areas of the community, including elected leaders, educators, business, social services, water quality and many others. In addition to the authority that is created through their member cities and counties, a Council of Governments also carries out state and federal statutory duties. While the exact combination of duties varies from region to region, two of the more formal roles include serving as the Regional Transportation Planning Agency under state law and as the federal Metropolitan Planning Organization (MPO).

WHAT IS A CTC?

A CTC could be one of two things. First, there are the **County Transportation Commissions** that are responsible for building transportation projects. The CTCs in the SCAG region are the Los Angeles County Metropolitan Transportation Authority (LACMTA); the Orange County Transportation Authority (OCTA); the Riverside County Transportation Commission (RCTC); the San Bernardino Associated Governments (SANBAG); and the Ventura County Transportation Commission (VCTC). The Imperial Valley Association of Governments (IVAG) provides the CTC functions for Imperial County. The second CTC is the **California Transportation Commission** that is responsible for reviewing statewide transportation activities and approving the State Transportation Improvement Program.

WHAT IS A JOINT POWERS AUTHORITY?

Joint Powers Authorities (JPAs) are formed by any two or more governmental entities (federal, state or local) to provide a common service. Many are financing tools that let governmental agencies pool their scarce resources. Some run programs jointly.

WHAT IS AN RTPA?

An RTPA is a **Regional Transportation Planning Agency**. It is a state designation for agencies (e.g., a local transportation commission, a statutorily created RTPA or Council of Governments) required to develop RTPs for their respective area. Sixteen of California's 43 RTPAs are also MPOs.

| FREQUENTLY ASKED QUESTIONS

(CONT.)

WHAT IS AN MPO?

A **Metropolitan Planning Organization** is mandated by the federal government to develop plans for transportation, growth management, hazardous waste management and air quality. An MPO must have a “continuing, cooperative and comprehensive” transportation planning process that results in plans and programs consistent with the comprehensively planned development of its corresponding urbanized area. Only one MPO is designated for each urbanized area.

WHAT IS THE OWP?

Each fiscal year, SCAG establishes an **Overall Work Program** that details the agency’s planning and budgetary priorities for the next fiscal year. SCAG’s federal and state funding partners (Federal Highway Administration, Federal Transit Administration and Caltrans) must approve SCAG’s OWP each year before it can take effect.

WHAT IS THE RHNA?

The **Regional Housing Needs Assessment** is a state-mandated planning effort conducted by SCAG. It is performed every five years and serves as the starting point for the local housing element update process. SCAG, along with its subregions, determines each jurisdiction’s “fair share” of the region’s housing need. Local governments, in turn, plan to accommodate that need by preparing individual Housing Elements.

WHAT IS THE RTIP?

The SCAG **Regional Transportation Improvement Program** is a listing of proposed transportation projects to be funded through a variety of federal, state and local sources over the next six years. SCAG receives lists of projects from county transportation commissions. SCAG assembles the project list and conducts air quality, financial and “highway gap” analysis. Federal and state laws require that the RTIP be consistent with the RTP and meet air quality requirements. All transportation projects that are federally or state funded, or have an air quality impact must be included in the RTIP. The RTIP, which is updated every two years, works much like a Capital Improvement Program in a city or county.

| FREQUENTLY ASKED QUESTIONS (CONT.)

WHAT IS THE RTP?

Federal and state laws require SCAG to prepare a long-range **Regional Transportation Plan** every four years. The RTP combines transportation policies and projects to:

- ▲ Address mobility and congestion throughout Southern California
- ▲ Coordinate a balanced regional transportation system
- ▲ Identify adequate funding for transportation projects
- ▲ Meet federal air quality requirements

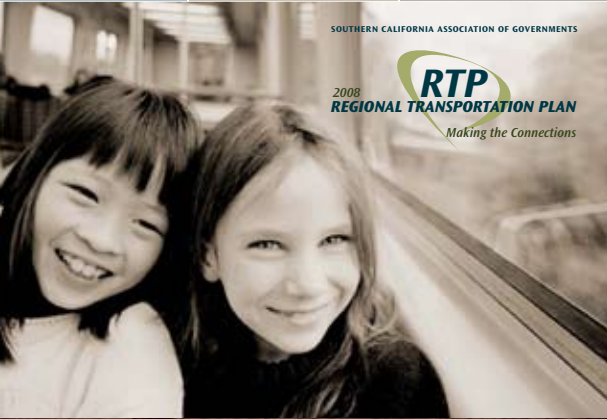
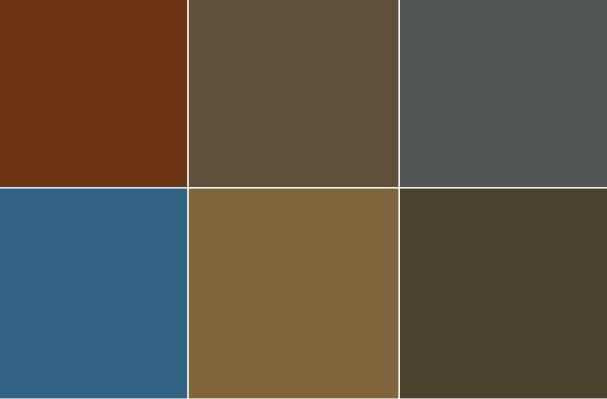
The RTP presents a 30-year transportation vision for the region and provides a long-term investment framework for addressing the region's transportation and related challenges. The RTP addresses all modes of transportation including highway and transit projects and high-speed regional transport. Projects must be included in the RTP to be eligible for state and federal funding.

WHAT IS THE RCP

The **Regional Comprehensive Plan** is similar to a General Plan for the region and is in fact intended to function as a voluntary toolbox to assist cities and counties in developing General and Specific plans. To that end, the RCP includes nine chapters: energy, air quality, water, open space, solid waste, transportation, economy, land use and housing and education, each with specific goals and outcomes designed to help set the path toward a more sustainable region. The RCP includes "best practices" and innovative new ideas that individual jurisdictions can include in their own plans.

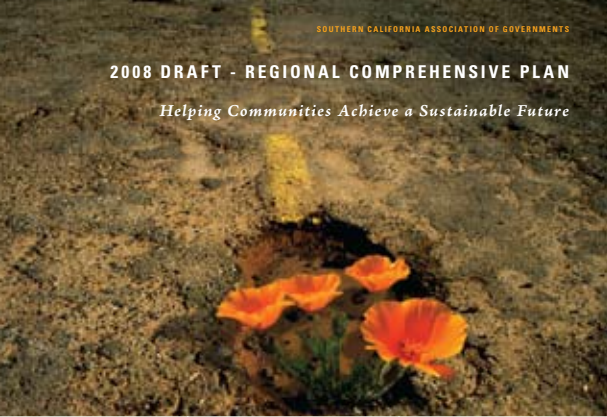
WHAT IS SAFETEA-LU?

The **Safe, Accountable, Flexible, Efficient Transportation Equity Act: A Legacy for Users**, known as SAFETEA-LU is the primary federal transportation authorization measure enacted in 2005 that provides approximately \$286.4 billion over a five-year period for transportation projects and programs. The President signed SAFETEA-LU into law on August 10, 2005, reauthorizing the original Intermodal Surface Transportation Efficiency Act (ISTEA) of 1991 and its successor, the Transportation Equity Act for the 21st Century (TEA-21) enacted in 1998.



SOUTHERN CALIFORNIA ASSOCIATION OF GOVERNMENTS

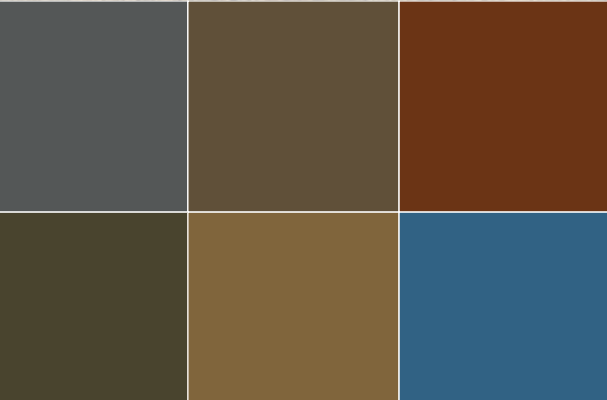
2008
RTP
REGIONAL TRANSPORTATION PLAN
Making the Connections



SOUTHERN CALIFORNIA ASSOCIATION OF GOVERNMENTS

2008 DRAFT - REGIONAL COMPREHENSIVE PLAN

Helping Communities Achieve a Sustainable Future



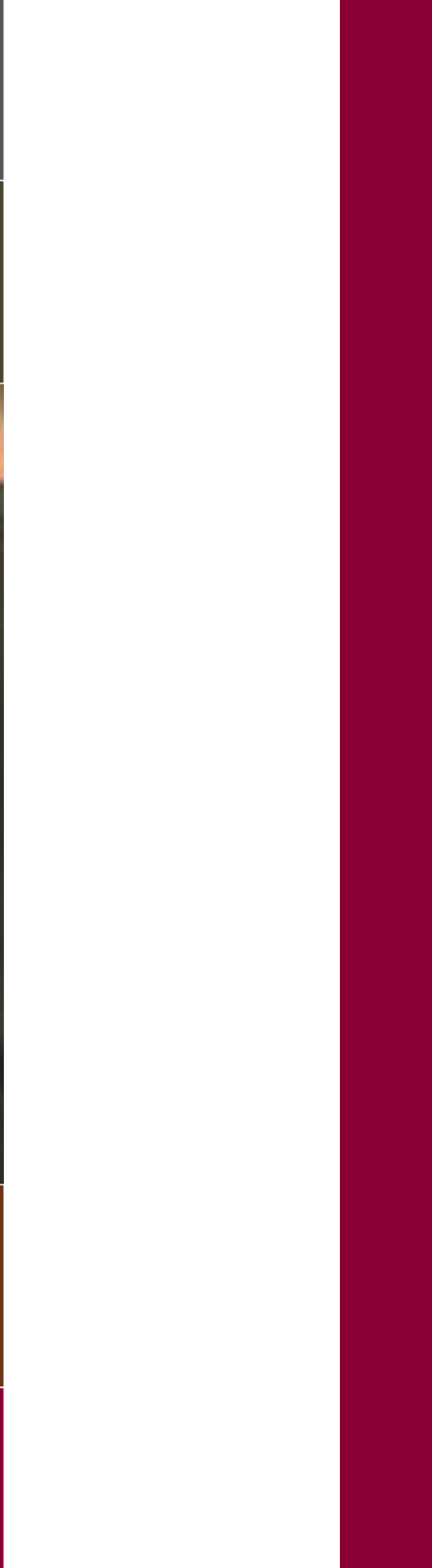
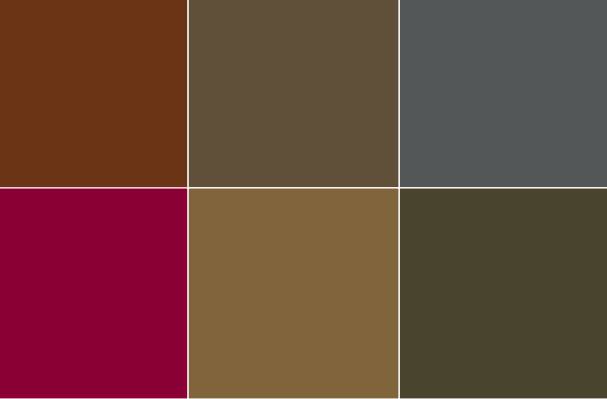
| PRESENTATIONS TO YOUR ORGANIZATION OR COMMUNITY

For SCAG's various planning initiatives to have true meaning and value to Southern California, we want to conduct presentations in your community and receive your feedback. SCAG offers the opportunity to learn about key issues through direct interaction with some of our region's leaders. Each presentation can be tailored to address a specific area of concern or provide a general overview of how SCAG works on many important issues that affect our quality of life.

Here are a few topics that SCAG can address:

- ▲ **Compass Blueprint** – A suite of growth visioning tools offered to cities and counties regarding innovative transportation and housing plans to accommodate growth over the next 30 years
- ▲ **Regional Transportation Plan** – A transportation plan with local and regional implications that addresses congestion concerns, identifies funding options and coordinates mobility throughout the region
- ▲ **Regional Comprehensive Plan** – A vision of how Southern California can balance resource conservation, economic vitality and quality of life
- ▲ **Southern California Trade Rush: 21st Century Gold** – The important role that goods movement and the logistics industry play in our regional economy
- ▲ **Transportation Funding** – The lack of funding to maintain our aging infrastructure, what SCAG is doing to help overcome it and what you can do to help make your opinions known
- ▲ **Running Out of Runways: Airports** – The critical role that airports play in our long-term economic health and strategies to make a regional airport system a reality
- ▲ **Air Quality** – Strategies for reducing Greenhouse Gases and emissions
- ▲ **State of the Region Annual Report Card for Southern California** – A report tracking progress on the critical issues facing the region

To request a SCAG presentation to your organization or community, please see page 35.



| CONTACTING SCAG

www.scag.ca.gov

OFFICE LOCATIONS

Main

818 West Seventh Street, 12th Floor | Los Angeles, CA 90017-3435
(213) 236-1800 | fax: (213) 236-1964

Inland

3600 Lime Street, Suite 216 | Riverside, CA 92501-2971
(909) 784-1513 | fax: (909) 784-3925

For more information about SCAG or to schedule a customized presentation for your organization, please contact:

Brian K. Williams, Director, Government & Public Affairs
(213) 236-1814 or email williams@scag.ca.gov

Please direct all media inquiries to:

Angie Chen, Public Affairs Specialist
(213) 236-1941 or email chenae@scag.ca.gov

For matters related to the following policy committees and the Regional Council please contact:

Executive/Administration Committee (EAC)

Carmen Summers (213) 236-1984 or email summers@scag.ca.gov

Community, Economic & Human Development Committee (CEHD)

Jane Embry (213) 236-1826 or email embry@scag.ca.gov

Energy & Environment Committee (EEC)

Cathy Alvarado (213) 236-1896 or email alvarado@scag.ca.gov

Regional Council (RC)

Shelia Stewart (213) 236-1868 or email stewart@scag.ca.gov

Transportation Committee (TC)

Mariana Puido (213) 236-1881 or email puido@scag.ca.gov

CREDITS

Art Director: Carolyn Hart

Photographer: Welma Fu

Designer: Reese Healey

Editors: Jessica Kirchner, Angie Chen

SCAG REGIONAL COUNCIL DISTRICTS (CONT.)

DISTRICT # 1

IVAG

1. Brawley
2. Calexico
3. Calipatria
4. El Centro
5. Holtville
6. Imperial
7. Westmorland

DISTRICT # 2

CVAG

1. Cathedral City
2. Desert Hot Springs
3. Indian Wells
4. Palm Desert
5. Palm Springs
6. Rancho Mirage

DISTRICT # 3

WRCOG

1. Banning
2. Beaumont
3. Calimesa
4. Moreno Valley

DISTRICT # 4

WRCOG

1. Riverside

DISTRICT # 5

WRCOG

1. Hemet
2. Murrieta
3. San Jacinto
4. Temecula

DISTRICT # 6

SANBAG

1. Colton
2. Grand Terrace
3. Loma Linda
4. Redlands
5. Yucaipa

DISTRICT # 7

SANBAG

1. Highland
2. San Bernardino

DISTRICT # 8

SANBAG

1. Fontana
2. Rialto

DISTRICT # 9

SANBAG

1. Montclair
2. Rancho Cucamonga
3. Upland

DISTRICT # 10

SANBAG

1. Chino
2. Chino Hills
3. Ontario

DISTRICT # 11

SANBAG

1. Barstow
2. Big Bear Lake
3. Needles
4. Twentynine Palms
5. Yucca Valley

DISTRICT # 12

OCCOG

1. Aliso Viejo
2. Dana Point
3. Laguna Beach
4. Laguna Niguel
5. San Clemente
6. San Juan Capistrano

DISTRICT # 13

OCCOG

1. Laguna Hills
2. Laguna Woods
3. Lake Forest
4. Mission Viejo
5. Rancho Santa Margarita

DISTRICT # 14

OCCOG

1. Irvine

DISTRICT # 15

OCCOG

1. Costa Mesa
2. Fountain Valley
3. Newport Beach

DISTRICT # 16

OCCOG

1. Santa Ana

DISTRICT # 17

OCCOG

1. Orange
2. Tustin
3. Villa Park

DISTRICT # 18

OCCOG

1. Cypress
2. Garden Grove
3. La Palma

DISTRICT # 19

OCCOG

1. Anaheim

DISTRICT # 20

OCCOG

1. Los Alamitos
2. Seal Beach
3. Stanton
4. Westminster

DISTRICT # 21

OCCOG

1. Buena Park
2. Fullerton

DISTRICT # 22

OCCOG

1. Brea
2. La Habra
3. Placentia
4. Yorba Linda

SCAG REGIONAL COUNCIL DISTRICTS (CONT.)

DISTRICT # 23

Gateway Cities COG

1. Artesia
2. Cerritos
3. Hawaiian Gardens
4. Norwalk

DISTRICT # 24

Gateway Cities COG

1. Bellflower
2. Lakewood
3. Paramount
4. Signal Hill

DISTRICT # 25

Gateway Cities COG

1. Downey
2. South Gate

DISTRICT # 26

Gateway Cities COG

1. Compton
2. Lynwood

DISTRICT # 27

Gateway Cities COG

1. Bell
2. Bell Gardens
3. Commerce
4. Cudahy
5. Huntington Park
6. Maywood
7. Vernon

DISTRICT # 28

South Bay Cities COG

1. Gardena
2. Hawthorne
3. Inglewood

DISTRICT # 29

Gateway Cities COG

1. Long Beach
2. Avalon

DISTRICT # 30

Gateway Cities COG

1. Long Beach

DISTRICT # 31

Gateway Cities

1. La Habra Heights
2. La Mirada
3. Santa Fe Springs
4. Pico Rivera
5. Whittier

DISTRICT # 32

SGVCOG

1. El Monte
2. Rosemead
3. South El Monte

DISTRICT # 33

SGVCOG

1. Azusa
2. Baldwin Park
3. Covina
4. Glendora
5. Irwindale

DISTRICT # 34

SGVCOG

1. Alhambra
2. Montebello
3. Monterey Park

DISTRICT # 35

SGVCOG

1. Arcadia
2. Bradbury
3. Duarte
4. Monrovia
5. San Gabriel
6. San Marino
7. Sierra Madre
8. Temple City

DISTRICT # 36

SGVCOG

1. La Canada Flintridge
2. Pasadena
3. South Pasadena

DISTRICT # 37

SGVCOG

1. Diamond Bar
2. Industry
3. La Puente
4. Walnut
5. West Covina

DISTRICT # 38

SGVCOG

1. Claremont
2. La Verne
3. Pomona
4. San Dimas

DISTRICT # 39

South Bay Cities COG

1. Carson
2. Lomita
3. Torrance

DISTRICT # 40

South Bay Cities COG

1. El Segundo
2. Hermosa Beach
3. Lawndale
4. Manhattan Beach
5. Palos Verdes Estates
6. Rancho Palos Verdes
7. Redondo Beach
8. Rolling Hills
9. Rolling Hills Estates

DISTRICT # 41

Westside Cities COG

1. Beverly Hills
2. Culver City
3. Santa Monica
4. West Hollywood

DISTRICT # 42

Arroyo Verdugo

1. Burbank
2. Glendale

SCAG REGIONAL COUNCIL DISTRICTS (CONT.)

DISTRICT # 43

North LA County

1. Lancaster
2. Palmdale

DISTRICT # 44

Las Virgenes Malibu

1. Agoura Hills
2. Calabasas
3. Hidden Hills
4. Malibu
5. Westlake Village

DISTRICT # 45

VCOG

1. Camarillo
2. Oxnard
3. Port Hueneme

DISTRICT # 46

VCOG

1. Moorpark
2. Simi Valley
3. Thousand Oaks

DISTRICT # 47

VCOG

1. Fillmore
2. Ojai
3. San Buenaventura
4. Santa Paula

DISTRICT # 48

(City of Los Angeles)

LA District # 1

DISTRICT # 49

(City of Los Angeles)

LA District # 2

DISTRICT # 50

(City of Los Angeles)

LA District # 3

DISTRICT # 51

(City of Los Angeles)

LA District # 4

DISTRICT # 52

(City of Los Angeles)

LA District # 5

DISTRICT # 53

(City of Los Angeles)

LA District # 6

DISTRICT # 54

(City of Los Angeles)

LA District # 7

DISTRICT # 55

(City of Los Angeles)

LA District # 8

DISTRICT # 56

(City of Los Angeles)

LA District # 9

DISTRICT # 57

(City of Los Angeles)

LA District # 10

DISTRICT # 58

(City of Los Angeles)

LA District # 11

DISTRICT # 59

(City of Los Angeles)

LA District # 12

DISTRICT # 60

(City of Los Angeles)

LA District # 13

DISTRICT # 61

(City of Los Angeles)

LA District # 14

DISTRICT # 62

(City of Los Angeles)

LA District # 15

DISTRICT # 63

WRCOG

1. Canyon Lake
2. Corona
3. Lake Elsinore
4. Norco
5. Perris
6. Wildomar

DISTRICT # 64

OCCOG

1. Huntington Beach

DISTRICT # 65

SANBAG

1. Adelanto
2. Apple Valley
3. Hesperia
4. Victorville

DISTRICT # 66

CVAG

1. Blythe
2. Coachella
3. Indio
4. La Quinta

DISTRICT # 67

North LA County

1. San Fernando
2. Santa Clarita

| SCAG MEMBERS

COUNTIES

Imperial County
Los Angeles County
Orange County
Riverside County
San Bernardino County
Ventura County

CITIES

Imperial County

Brawley
Calexico
Calipatria
El Centro
Holtville
Imperial
Westmorland

Los Angeles County

Agoura Hills
Alhambra
Arcadia
Artesia
Avalon
Azusa
Baldwin Park
Bell
Bell Gardens
Bellflower
Beverly Hills
Bradbury
Burbank
Calabasas
Carson
Cerritos
Claremont
Commerce
Compton
Covina
Cudahy
Culver City
Diamond Bar
Downey
Duarte
El Monte
El Segundo

Gardena
Glendale
Glendora
Hawaiian Gardens
Hawthorne
Hermosa Beach
Hidden Hills
Industry
Inglewood
Irwindale
La Canada Flintridge
La Mirada
La Puente
La Verne
Lakewood
Lancaster
Lawndale
Lomita
Long Beach
Los Angeles
Lynwood
Malibu
Manhattan Beach
Maywood
Monrovia
Montebello
Monterey Park
Norwalk
Palmdale
Paramount
Pasadena
Pico Rivera
Pomona
Rancho Palos Verdes
Redondo Beach
Rolling Hills
Rolling Hills Estates
Rosemead
San Dimas
San Fernando
San Gabriel
San Marino
Santa Clarita
Santa Fe Springs
Santa Monica
Sierra Madre

Signal Hill
South El Monte
South Pasadena
Torrance
Vernon
Walnut
West Covina
West Hollywood
Westlake Village

Orange County

Anaheim
Brea
Buena Park
Cypress
Dana Point
Fullerton
Huntington Beach
Irvine
La Habra Heights
La Palma
Laguna Beach
Laguna Niguel
Laguna Woods
Lake Forest
Los Alamitos
Mission Viejo
Newport Beach
Placentia
San Clemente
Seal Beach
Tustin
Westminster
Yorba Linda

SCAG MEMBERS (CONT.)

Riverside County

Banning
Beaumont
Blythe
Calimesa
Canyon Lake
Cathedral City
Coachella
Corona
Desert Hot Springs
Hemet
Indian Wells
Indio
La Quinta
Lake Elsinore
Moreno Valley
Murrieta
Norco
Palm Desert
Palm Springs
Perris
Rancho Mirage
Riverside
Temecula

San Bernardino County

Adelanto
Apple Valley
Barstow
Big Bear Lake
Chino
Colton
Fontana
Grand Terrace
Highland
Loma Linda
Montclair
Needles
Ontario
Rancho Cucamonga
Redlands
Rialto
San Bernardino
Upland
Victorville
Yucaipa
Yucca Valley

Ventura County

Camarillo
Fillmore
Moorpark
Ojai
Oxnard
Port Hueneme
San Buenaventura
Santa Paula
Simi Valley
Thousand Oaks

TRIBAL GOVERNMENT REPRESENTATIVE

COUNTY TRANSPORTATION COMMISSIONS

ORANGE COUNTY TRANSPORTATION AUTHORITY

RIVERSIDE COUNTY TRANSPORTATION COMMISSION

VENTURA COUNTY TRANSPORTATION COMMISSION

Funding: The preparation of this report was financed in part through grants from the United States Department of Transportation – Federal Highway Administration and the Federal Transit Administration – under provisions of the “Safe, Accountable, Flexible, Efficient Transportation Equity Act: A Legacy for Users” (SAFETEA-LU). Additional financial assistance was provided by the California State Department of Transportation.

SCAG REGIONAL COUNCIL MEMBERS

OFFICERS:

President: Richard Dixon, Lake Forest

First Vice President: Harry Baldwin, San Gabriel

Second Vice President: Jon Edney, El Centro

Immediate Past President: Gary Ovitt, San Bernardino County

Imperial County: Victor Carrillo, Imperial County ▲ Jon Edney, El Centro

Los Angeles County: Yvonne B. Burke, Los Angeles County ▲ Zev Yaroslavsky, Los Angeles County ▲ Richard Alarcón, Los Angeles ▲ Jim Aldinger, Manhattan Beach ▲ Harry Baldwin, San Gabriel ▲ Barbara Calhoun, Compton ▲ Tony Cardenas, Los Angeles ▲ Stan Carroll, La Habra Heights ▲ Margaret Clark, Rosemead ▲ Gene Daniels, Paramount ▲ Judy Dunlap, Inglewood ▲ Rae Gabelich, Long Beach ▲ David Gafin, Downey ▲ Eric Garcetti, Los Angeles ▲ Wendy Greuel, Los Angeles ▲ Frank Gurulé, Cudahy ▲ Janice Hahn, Los Angeles ▲ Keith W. Hanks, Azusa ▲ José Huizar, Los Angeles ▲ Tom LaBonge, Los Angeles ▲ Paula Lantz, Pomona ▲ Barbara Messina, Alhambra ▲ Larry Nelson, Artesia ▲ Pam O'Connor, Santa Monica ▲ Bernard Parks, Los Angeles ▲ Jan Perry, Los Angeles ▲ Ed Reyes, Los Angeles ▲ Bill Rosendahl, Los Angeles ▲ Greig Smith, Los Angeles ▲ Mike Ten, South Pasadena ▲ Tonia Reyes Uranga, Long Beach ▲ Antonio Villaraigosa, Los Angeles ▲ Dennis Washburn, Calabasas ▲ Jack Weiss, Los Angeles ▲ Herb J. Wesson, Jr., Los Angeles ▲ Dennis Zine, Los Angeles

Orange County: Chris Norby, Orange County ▲ Christine Barnes, La Palma ▲ John Beauman, Brea ▲ Lou Bone, Tustin ▲ Debbie Cook, Huntington Beach ▲ Leslie Daigle, Newport Beach ▲ Richard Dixon, Lake Forest ▲ Paul Glaab, Laguna Niguel ▲ Robert Hernandez, Anaheim ▲ Beth Krom, Irvine ▲ Ken Parker, Los Alamitos ▲ Sharon Quirk, Fullerton

Riverside County: Jeff Stone, Riverside County ▲ Thomas Buckley, Lake Elsinore ▲ Bonnie Flickinger, Moreno Valley ▲ Ron Loveridge, Riverside ▲ Greg Pettis, Cathedral City ▲ Ron Roberts, Temecula

San Bernardino County: Gary Ovitt, San Bernardino County ▲ Lawrence Dale, Barstow ▲ Glenn Duncan, Chino ▲ Paul Eaton, Montclair ▲ Pat Gilbreath, Redlands ▲ Tim Jasper, Town of Apple Valley ▲ Larry McCallon, Highland ▲ Deborah Robertson, Rialto

Ventura County: Linda Parks, Ventura County ▲ Glen Becerra, Simi Valley ▲ Carl Morehouse, San Buenaventura ▲ Toni Young, Port Hueneme

Tribal Government Representative:

Andrew Masiel Sr., Pechanga Band of Luiseño Indians

Orange County Transportation Authority:

Art Brown, Buena Park

Riverside County Transportation Commission:

Robin Lowe, Hemet

San Bernardino Associated Governments:

Paul Leon, Ontario

Ventura County Transportation Commission:

Keith Millhouse, Moorpark



**SOUTHERN CALIFORNIA
ASSOCIATION of GOVERNMENTS**



818 West Seventh, Street 12th Floor | Los Angeles, CA 90017-3435
(213) 236-1800 | fax: (213) 236-1964 | [www. scag.ca.gov](http://www.scag.ca.gov)