



Disadvantaged Communities Active Transportation Planning Initiative

Toolbox Tuesday

3/30/2021



Active Transportation Plan
TOOLKIT

Panelists



Sam Corbett
Principal and Project
Manager
Alta Planning + Design



Courtney Banker
Planner, Lead for Perris and
Calipatria
Alta Planning + Design

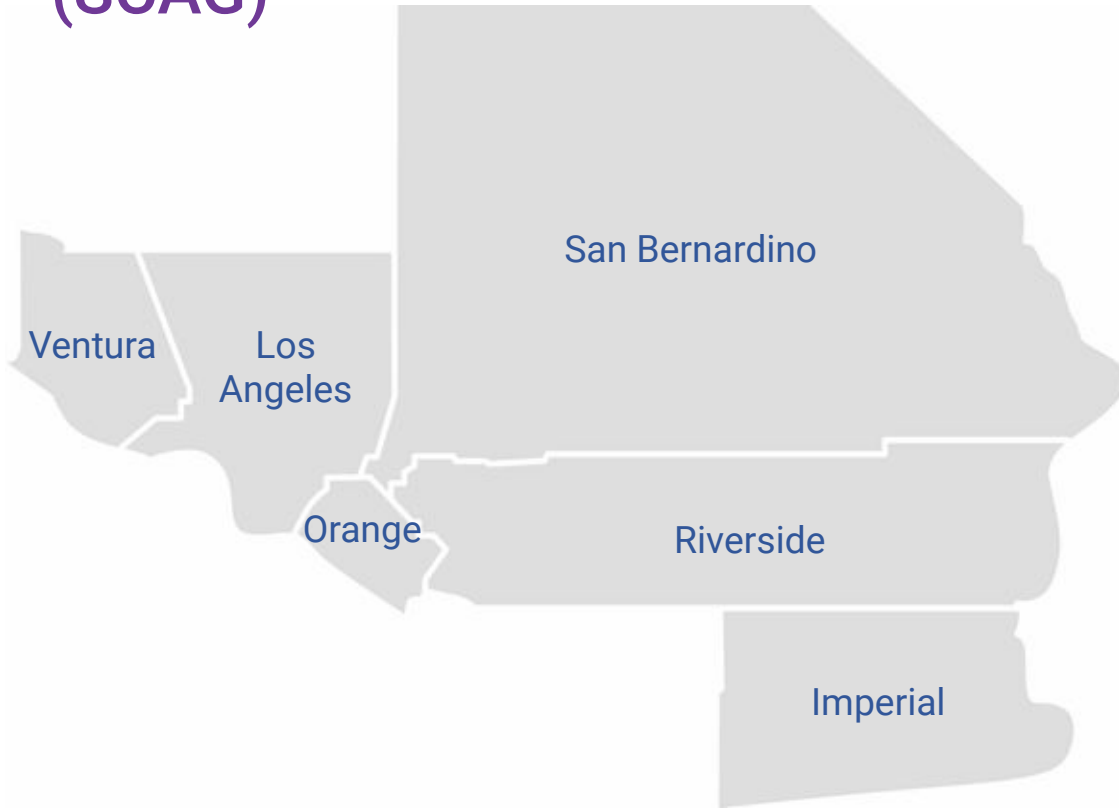


Wendy Romero
Founder and Chief
Executive Officer
Love 4 Life Association



Jennifer Lilley, AICP
Community and Economic
Development Director
City of Stanton

Southern California Association of Governments (SCAG)



**Nation's
Largest
MPO**

**191 Cities
6 Counties**

**18.9
Million
People**

**16th
Largest
Economy
in the
World**

Planning Impetus



- Fatalities and serious injuries disproportionately impact people walking and bicycling
- 66% of SCAG's High Injury Network is in disadvantaged communities
- Disadvantaged communities face a greater pollution burden and worse public health outcomes than other communities throughout the state
- 56% of jurisdictions within SCAG meet the thresholds for disadvantaged status
- **Of these communities, less than 26% have active transportation plans**

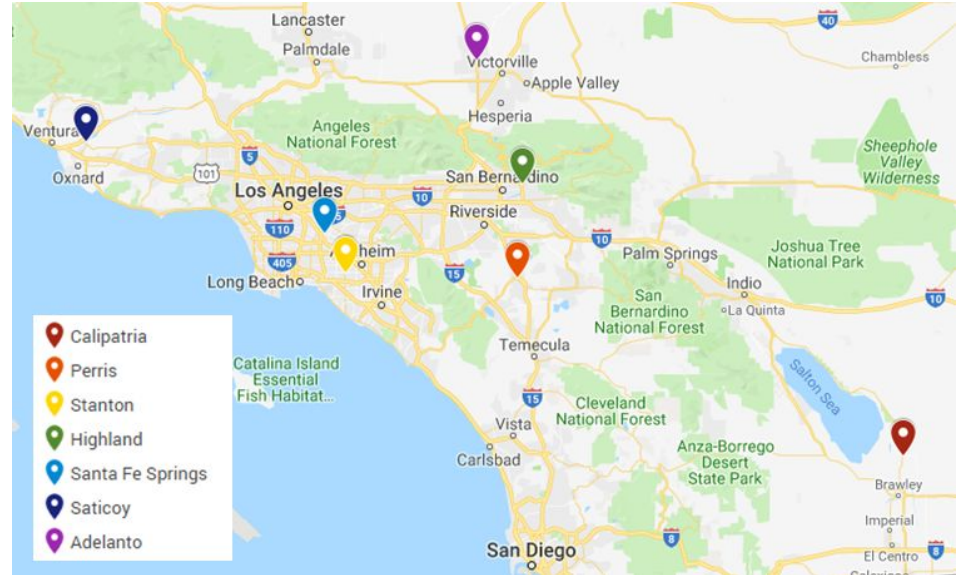
Project Background



Active Transportation Plan

TOOLKIT

- SCAG's Disadvantaged Communities Planning Initiative (DCPI): 2 year planning effort (2019-2021)
- Develop an Active Transportation Plan Toolkit
- Toolkit approach was piloted in 7 communities
 - Urban, suburban, rural
- Project Team:



DCPI Goals



1. Develop **low-cost model** for delivering active transportation plan in low-resourced communities;
2. **Expand use and value** of SCAG's existing active transportation resources;
3. Ensure approach is **applicable in a variety of contexts**, recognizing the diversity of the SCAG region;
4. Align planning products with the requirements of the **California Active Transportation Program for funding**;
5. Go beyond the current state-of-practice to produce **data-driven and innovative planning solutions**;
6. Design for **long-term sustainability**; provide guidance and recommendations to support use of the Toolkit beyond the life of the project.

Toolkit Preparation

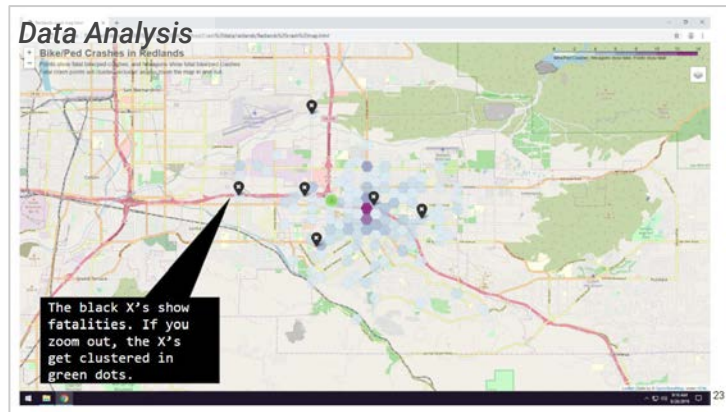


Active Transportation Plan

TOOLKIT

- National Scan of Best Practices
- Outreach + Equity Framework
- Expert Focus Group
- Data Analysis Tools
 - Includes public health assessment

= Preliminary Toolkit



Equity Framework

2. The Vision

EQUITY FRAMEWORK

The Plan is guided by an Equity Framework, which asks:

- Who are the most vulnerable groups in the community?
- What outcomes do the most vulnerable residents want to see come from this planning effort?
- How can implementation of the Plan work towards these outcomes?

The Plan identified vulnerable user groups as well as a vision and supporting goals that we believe will advance equity, safety and health, access and control, affordability, and an enhanced network. The Plan also defined future actions and ways to measure progress on these four goals.

Focusing on Vulnerable Residents

Some groups of people experience greater vulnerabilities and disparities in [COMMUNITY LINKS](#) transportation system-at times as a result of the system itself. The more groups a person identifies with, the greater the disparity. These groups include:

- Black, indigenous, Latinx, and other People of color
- People identifying as women, queer, and transgender

Equity in this Plan means that community members who have historically been left out of transportation investments and decisions will be prioritized, engaged, and included.



The Plan works to improve transportation for all residents of our community, especially those who have historically been excluded from transportation decisions and investments.

Health Assessment

Neighborhood

This city has healthier neighborhood conditions than just 24.9% of other California cities.

Indicator	Percentile Ranking
Tree Canopy	4
Supermarket Access	50.2



Toolkit Piloting Process

- Community Advisory Committees
- Partnerships with Community-Based Organizations (CBOs)
- Engagement Activities
 - Interactive Web Map
 - Walk Audits
 - Art Installation
 - Project Website
 - Social Media Advertisements
 - Community Surveys
 - Virtual Town Hall
 - Curbside Displays



Toolkit Piloting Process - Go Human

- SCAG's community outreach + advertising campaign to reduce traffic collisions and encourage walking/biking
- Hosted 2 capacity-building trainings per community
- Planned community demonstration events



= Capacity Building + Public Input

Toolkit Piloting Process - COVID-19



Active Transportation Plan
TOOLKIT

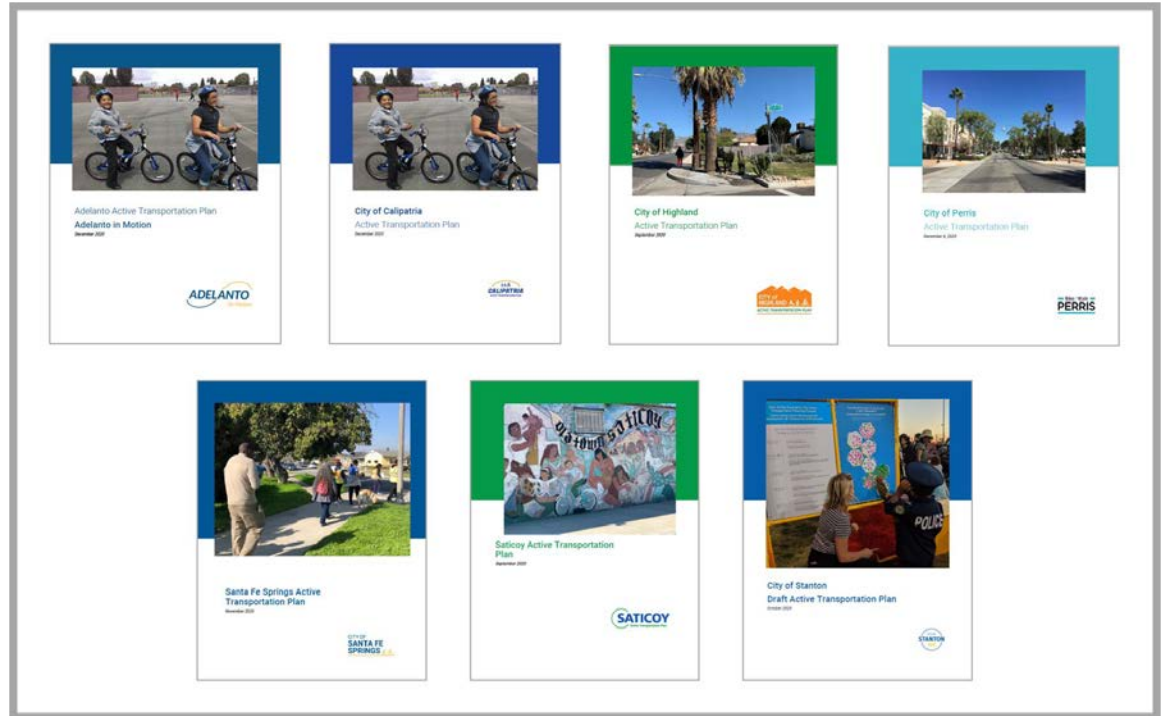
- Cancelled Activities
 - Bicycle + Pedestrian Counts
 - *Go Human* Demonstration Events
- Transition to Virtual Engagement
 - Social Media Advertisements
 - Recommendations Survey
[Online + Print]
 - Virtual Town Hall
 - Call-in Office Hours
 - Curbside Displays
- Paper / In-Person Activities
 - Support from CBOs

= Importance of Partnerships with CBOs



Toolkit Piloting Process - Completion

- 7 completed Active Transportation Plans
- Roadmap for securing funding, implementing recommendations
- Built community support for walking and biking
- Allowed for continuous improvements to Toolkit



Key Lessons Learned



1. **There is a big appetite for AT improvements.** All 7 communities saw a strong desire for improvements to make walking and biking more comfortable, convenient, and safe.
2. **City staff are resource-constrained.** Even with Toolkit, cities may not have the resources to complete their Plans without additional support (especially mapping and network development).
3. **Successful community engagement approaches included partnerships with CBOs, social media advertisements, and going to the people.** Engagement needs to be tailored for each community and take a variety of approaches (i.e., high / low / no tech).
4. **Planning efforts can adjust to a pandemic** while still engaging vulnerable residents.

The Toolkit



Active Transportation Plan
TOOLKIT

Toolkit Final Components

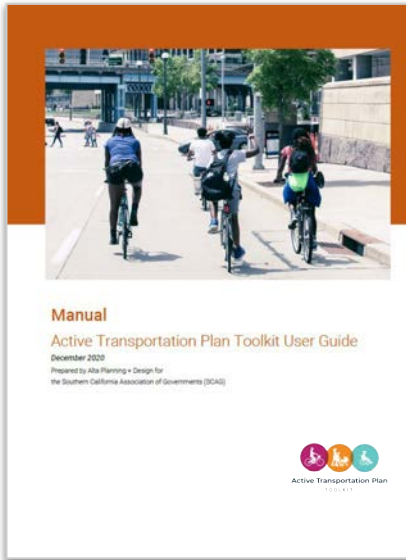


Active Transportation Plan
TOOLKIT



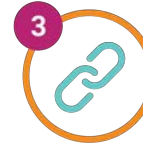
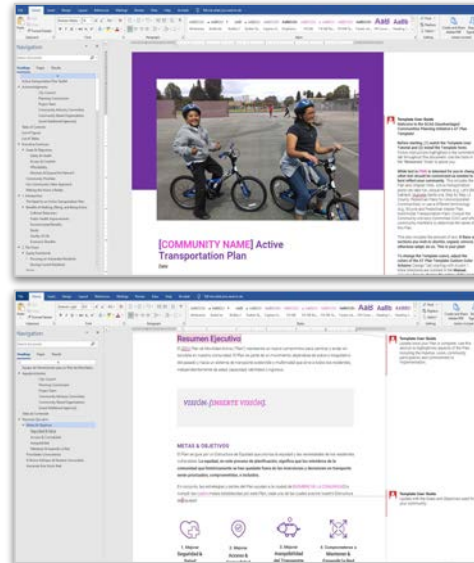
MANUAL

- DCPI Background
- How-to Guide
- Planning Tips



TEMPLATE

- Customizable Plan
- Spanish Executive Summary
- Template Tutorial



RESOURCES

- Data Analysis, Outreach
- Graphics Library
- Recommendations
- Adoption, Implementation
- + more



Toolkit Final Components



1_Manual



2_Template



3_Resources



AT_Plan_Toolkit_Introduction

Length: 00:05:12



AT Plan Toolkit

AT_Plan_Toolkit_Introduction



Active Transportation Plan
TOOLKIT

0:00:06 0:05:06

Speaker icon, Chat icon, 10s rewind, Play, 30s fast forward, Full screen, Share, More options

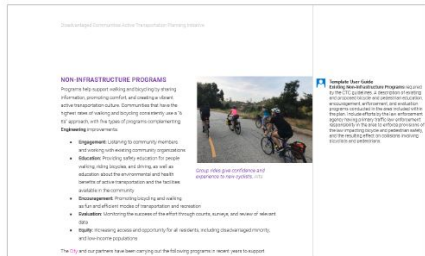
1. Manual

Disadvantaged Communities Active Transportation Planning Initiative

How to Use the Template

The Active Transportation Plan Template is a Microsoft Word document organized with all of the required elements of an AT Plan, and additional elements to enhance analysis, engagement, and corresponding recommendations. The Template provides the basic structure and content for completing an AT Plan, while the Resources help communities customize the content and fill in placeholder text. The Toolkit also includes a Spanish version of the Executive Summary which can be updated when the Plan is ready to share with the public. If languages other than Spanish and English are prevalent in your community, consider translating the Executive Summary to additional languages.

This section provides details on the key elements of the Template.



Items required by the CTC guidelines are called out in the Comments sidebar.

Disadvantaged Communities Active Transportation Planning Initiative

- Invite volunteers to help if needed, particularly with outreach events and collecting count data.

Determine whether consultant support is needed. Consulting firms can assist with all aspects of the planning and implementation process (see Table 2). If consulting assistance is desired, work with your procurement and contracting department to determine the best approach to hire a consultant.

Table 2. Consultant Services for Active Transportation Planning

Service	Pre-Plan	Plan Creation	Implementation
Visioning	✓		
Outreach	✓		
Data Analysis		✓	✓
Mapping		✓	
Graphic Design	✓		✓
Concept Design		✓	✓
Recommendations		✓	✓
Cost Estimates		✓	✓
Feasibility Assessments		✓	✓
Engineering		✓	✓
Programs	✓		✓
Grant Writing	✓		✓

3) GUIDE

Convene a **Community Advisory Committee (CAC)** to help guide your community throughout this planning process. CAC members should represent various sectors, groups, and stakeholders in order to be able to best articulate the many needs of the community, including:



Community Advisory Committee (CAC) members provide invaluable insights.

Disadvantaged Communities Active Transportation Planning Initiative

Adopting and Implementing the Plan

A completed AT Plan provides a crucial foundation for communities. Once the plan is completed, work must continue to implement the plan and ensure the vision set forth in the plan comes to fruition.

TAKE THE PLAN TO CITY COUNCIL

Bring the plan to the appropriate governing body (e.g., Planning Commission and City Council) for approval and adoption. Include a resolution of adoption in the public-facing document.

APPLY FOR FUNDING

Contact SCAG or the county's transportation authority and/or regional planning agency for grant writing assistance. [Caltrans's Active Transportation Resource Center](#) (ATRC) also provides resources, technical assistance, and training to transportation partners across California to increase opportunities for the success of active transportation projects.

Once funding has been secured, it is important to conduct additional outreach when implementing facilities at each stage of the process:

- Concept
- Design
- Construction

GOOD TO KNOW

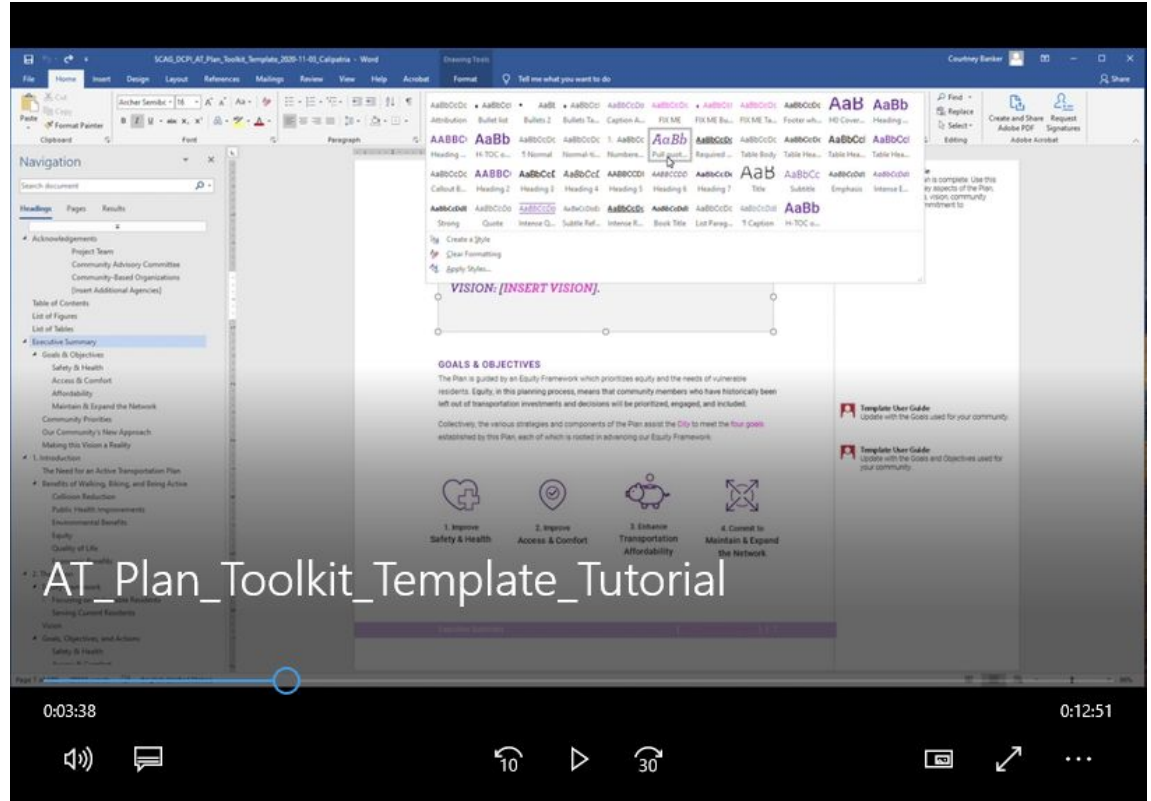
Caltrans's Active Transportation Resource Center (ATRC) utilizes a combination of subject matter experts from state agencies, universities, and consultants to provide active transportation training, tools, and technical assistance that support the ATP. Contact the ATRC for grant writing assistance and more.

2. Template

Step 1_Watch Template Tutorial

Step 2_Install Fonts

Step 3_Build Your Plan



AT_Plan_Toolkit_Template_Tutorial

0:03:38

0:12:51

2. Template



Active Transportation Plan
TOOLKIT

Step 1_Watch Template Tutorial

Step 2_Install Fonts

Step 3_Build Your Plan

The screenshot shows a Microsoft Word document titled "AT_Plan_toolkit_template - Word". The interface includes the standard Word ribbon (File, Home, Insert, Design, Layout, References, Mailings, Review, View, Help, Account) and a navigation pane on the left. The navigation pane shows a tree view of the document's structure, including sections like "Active Transportation Plan Toolkit", "Acknowledgments", "Table of Contents", "List of Figures", "List of Tables", "Executive Summary", "Goals & Objectives", "Safety & Health", "Access & Comfort", "Affordability", "Maintain & Expand the Network", "Community Priorities", "Our Community's New Approach", "Making this Vision a Reality", "1. Introduction", "The Need for an Active Transportation Plan", "Benefits of Walking, Biking, and Being Active", "Collision Reduction", "Public Health Improvements", "Environmental Benefits", "Equity", "Quality of Life", "Economic Benefits", "2. The Vision", "Equity Framework", "Focusing on Vulnerable Residents", "Serving Current Residents", and "Vision".

The main content area features a large photo of two people riding bicycles. Below the photo, the text reads: "[COMMUNITY NAME] Active Transportation Plan" and "Date".

The right-hand sidebar contains instructions for customizing the template:

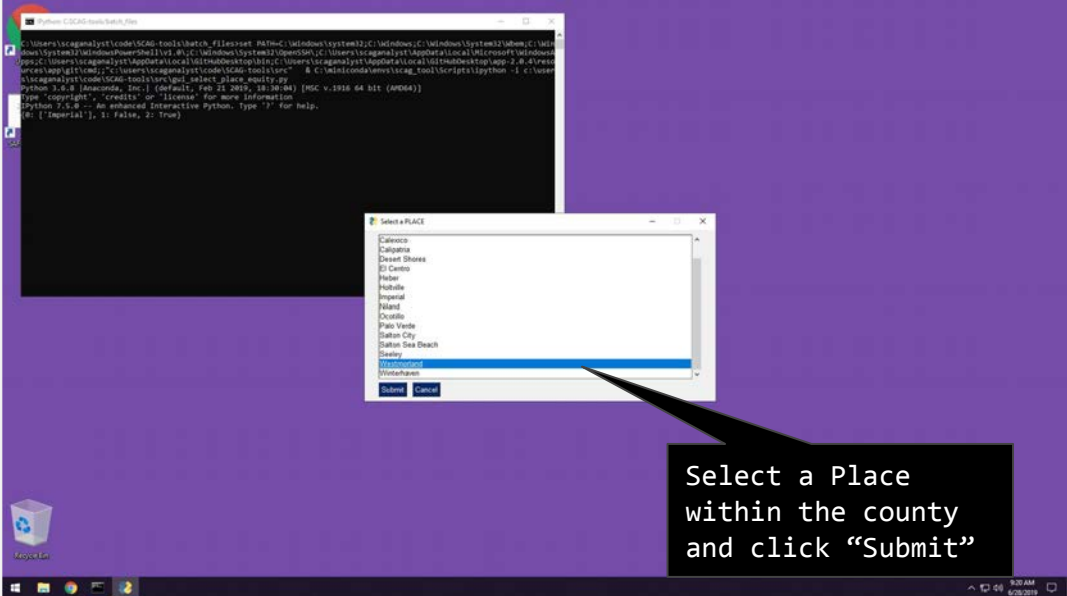
- Template User Guide:** Welcome to the SCAG Disadvantaged Communities Active Transportation Planning Initiative's AT Plan Template!
- Before starting:** (1) watch the Template User Tutorial and (2) install the Template fonts. Follow instructions highlighted in the comments tab throughout this document. Use the tools in the "Resources" folder to assist you.
- While text in PINK is intended for you to change, other text should be customized as needed to best reflect your community.** This includes the Plan and Chapter titles. Active transportation plans can take fun, unique names (e.g., Let's Bike Oakland, ~~Mudate~~ Santa Ana, Step by Step LA County, Pedestrian Plans for Unincorporated Communities), or use a different terminology (e.g., Bicycle and Pedestrian Master Plan, Multimodal Transportation Plan). Consult the Community Advisory Committee (CAC) and other community members to determine the name of this Plan.
- This also includes the amount of text. If there are sections you wish to shorten, expand, remove, or otherwise adapt, do so. This is your plan!**
- To change the Template colors, adjust the colors of the AT Plan Template Custom Color Scheme (Design Tab) starting with Accent 1.** More directions are outlined in the **Manual**, including **how to change the colors of the icons**.
- To change photos, right click on the image and select "Change Picture" > "From a File."** This preserves captions and will help maintain formatting, although adjustments may still be needed. Be sure to credit Alta if photos from the Graphics Library, or other sources if from another outlet.
- Finally, to help you navigate through this Word document, turn on the Navigation Pane in the **View** ribbon.**

At the bottom of the document, it says "Page 1 of 151 31100 words English (United States)" and "120%".

3. Resources

- Active Transportation Program Grant Technical Assistance
- Completed AT Plans
- Data Analysis
- DCPI Lessons Learned
- Facility Design Guidelines
- Graphics Library
- Needs Assessment
- Outreach
- Plan Adoption
- Recommendations
- Word Tips and Tricks
- Work Plan

Using the Automated Data Tool



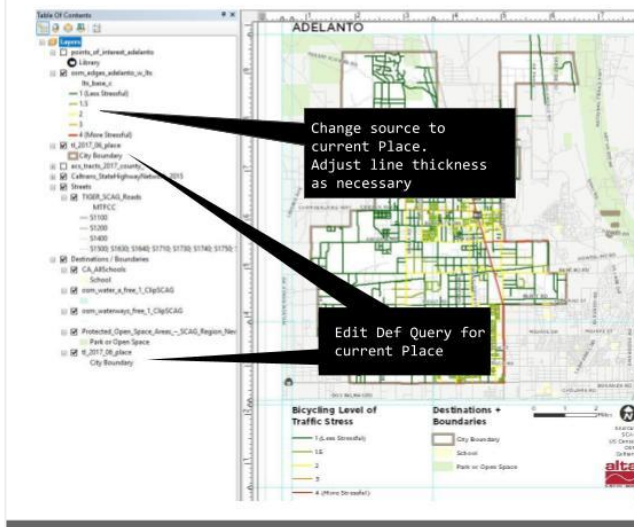
The screenshot shows a Windows desktop environment. In the background, a black terminal window displays a Python script being executed. The script path is `C:\Users\lucaganalyst\code\SCAD-tools\batch_files\set_path.py`. The script output shows the current directory and Python version information. In the foreground, a white dialog box titled "Select a PLACE" is open, displaying a list of locations: Cabesaco, Calipatria, Deason Shores, El Centro, Helix, Holtville, Imperial, Island, Ocotillo, Palm Vista, Salton City, Salton Sea Beach, Seaway, **Marion County**, and Yuma/Kearney. The "Marion County" option is highlighted with a blue selection bar. Below the list are "Submit" and "Cancel" buttons. A black callout box with white text points to the "Submit" button, containing the text: "Select a Place within the county and click 'Submit'".

3. Resources

- Active Transportation Program Grant Technical Assistance
- Completed AT Plans
- Data Analysis
- DCPI Lessons Learned
- Facility Design Guidelines
- Graphics Library
- Needs Assessment
- Outreach
- Plan Adoption
- Recommendations
- Word Tips and Tricks
- Work Plan

Making Maps with the Outputs

Accessibility - BLTS



The filepath of the new source is within the "Accessibility Maps" folder

Then select the file that starts with "osm...": Accessibility Maps\YOUR_CITY\SHAPEFILE_EXPORTS\osm_edges_YOUR_CITY_w_Its.shp

To calculate the percentage of roadways within each category:

- "Select by attribute" for BLTS of 1 (Field: "Its_base_c"). Calculate sum of roadway length using "Statistics" option on "Length" field.
- Input the values into the Data Workbook. Repeat for BLTS 1.5 - 4.
- Update the chart in the Template (right click on chart → Edit Data → Edit Data in Excel → Paste in values).

3. Resources

- Active Transportation Program Grant Technical Assistance
- Completed AT Plans
- Data Analysis
- DCPI Lessons Learned
- Facility Design Guidelines
- Graphics Library
- Needs Assessment
- Outreach
- Plan Adoption
- Recommendations
- Word Tips and Tricks
- Work Plan



Active Transportation Plan
TOOLKIT

Using the Data Workbook

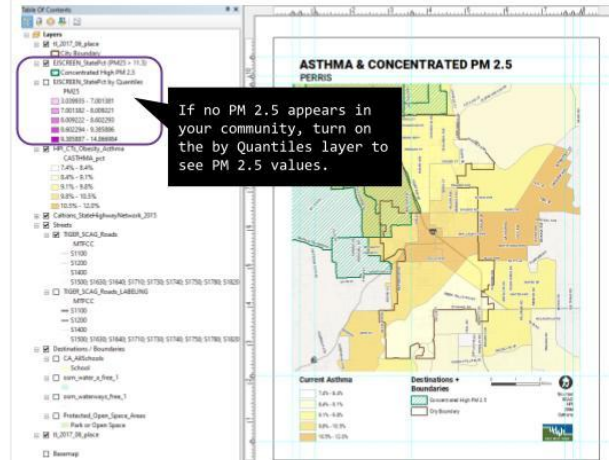
Order ID	Order in MS Word	Health Objective	JPH Title	Relevant Variable	Community Value	California Percentage	% of California Cities	Priority Level	Included in	Corresponding text in Table 2 of AT Plan Template	
10	1	Health Equity	Above Poverty	Percent of people earning more than 200% of federal poverty level			100.00%	High	Positive	No	Above Poverty: Percent of people earning more than 200% of federal poverty level
11	2	Health Equity	Median Household Income	Median annual household income			100.00%	High	Positive	No	Median Household Income: Median annual household income
12	3	Health Equity	Employed	Percentage of people aged 25-64 who are employed			100.00%	High	Positive	No	Employed: Percentage of people aged 25-64 who are employed
13	4	Physical Activity	Active Commuting	Percentage of workers (16 years and older) who commute to work by transit, walking, or cycling			100.00%	High	Positive	Yes	Active Commuting: Percentage of workers (16 years and older) who commute to work by transit, walking, or cycling
14	5	Health Equity	Automobile Access	Percentage of households with access to an automobile			100.00%	High	Positive	Yes	Automobile Access: Percentage of households with access to an automobile
15	6	Health Equity	Park Access	Percentage of the population living within walkable distance (half-mile) of a park, beach, or open space greater than 1 acre			100.00%	High	Positive	Yes	Park Access: Percentage of the population living within walkable distance (half-mile) of a park, beach, or open space greater than 1 acre
16	7	Health Equity	Retail Density	Gross retail, entertainment, and education employment density (jobs/acre) on unimproved land			100.00%	High	Positive	Yes	Retail Density: Gross retail, entertainment, and education employment density (jobs/acre) on unimproved land
17	8	Health Equity	Supermarket Access	Percentage of people in urban areas who live less than a half mile from a supermarket/large grocery store, or less than 1 mile in rural areas			100.00%	High	Positive	Yes	Supermarket Access: Percentage of people in urban areas who live less than a half mile from a supermarket/large grocery store, or less than 1 mile in rural areas
18	9	Health Equity	Tree Canopy	Percentage of land with tree canopy (weighted by number of people per acre)			100.00%	High	Positive	Yes	Tree Canopy: Percentage of land with tree canopy (weighted by number of people per acre)
19	10	Environment	Clean Air - Ozone	Mean of summer months (May-October) of daily maximum 8-hour ozone concentration (ppm), averaged over three years (2012-2014)			100.00%	High	Negative	Yes	Clean Air - Ozone: Mean of summer months (May-October) of daily maximum 8-hour ozone concentration (ppm), averaged over three years (2012-2014)
20	11	Environment	Clean Air - Diesel PM	Spatial distribution of gridded diesel PM emissions from on-road and non-road sources for a 2012 summer day (July 30-31)			100.00%	High	Negative	Yes	Clean Air - Diesel PM: Spatial distribution of gridded diesel PM emissions from on-road and non-road sources for a 2012 summer day (July 30-31)
21	12	Environment	Clean Air - PM 2.5	Annual mean concentration of PM2.5 (very small particles from vehicle tailpipes, fires and brakes, powerplants, factories, burning wood, construction dust, and many other sources) (average of quarterly means $\mu\text{g}/\text{m}^3$) over three years			100.00%	High	Negative	Yes	Clean Air - PM 2.5: Annual mean concentration of PM2.5 (very small particles from vehicle tailpipes, fires and brakes, powerplants, factories, burning wood, construction dust, and many other sources) (average of quarterly means $\mu\text{g}/\text{m}^3$) over three years
22	13	Physical Activity	Obesity	Percent of adults aged 18 years who have a body mass index (BMI) $\geq 30.0 \text{ kg}/\text{m}^2$ calculated from self-reported weight and			100.00%	High	Negative	Yes	Obesity: Percent of adults aged 18 years who have a body mass index (BMI) $\geq 30.0 \text{ kg}/\text{m}^2$ calculated from self-reported weight and

3. Resources

- Active Transportation Program Grant Technical Assistance
- Completed AT Plans
- Data Analysis
- DCPI Lessons Learned
- Facility Design Guidelines
- Graphics Library
- Needs Assessment
- Outreach
- Plan Adoption
- Recommendations
- Word Tips and Tricks
- Work Plan

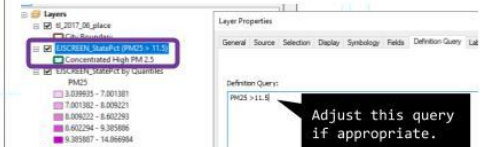
Conducting the Health Assessment

Asthma & Particulate Matter 2.5



Update the queries and zoom to your community.

If no areas of Concentrated High PM 2.5 are shaded, turn on the **EJSCREEN_StatePCT by Quantiles** layer. Determine if areas in the community are just below the threshold (PM25 > 11.5). Adjust the definition query as appropriate, or if PM 2.5 is not of high concern in the community, disregard this map.



3. Resources



- Active Transportation Program Grant Technical Assistance
- Completed AT Plans
- Data Analysis
- DCPI Lessons Learned
- Facility Design Guidelines
- Graphics Library
- Needs Assessment
- Outreach
- Plan Adoption
- Recommendations
- Word Tips and Tricks
- Work Plan

- Sample Materials
 - AT_Plan_Toolkit_Engagement_Tracker
 - AT_Plan_Toolkit_Resources_Outreach_and_Equity_Framework
 - AT_Plan_Toolkit_Resources_Outreach_Toolkit

Using the Outreach Materials

Saticoy Active Transportation Plan: Walking Tour
Plan de Transporte Activa: Caminata de Saticoy

Legend/ Símbolos
★ Starting location / Lugar de inicio
● Stop Locations / Paradas

Directions: Document what you have observed and what you observe today as you walk along the route.
Direcciones: Documente lo que ha observado y lo que observe hoy mientras camina la ruta.

What to look for / En que fijarse:

Sidewalk Challenges/ Desafíos en las banquetas: Mark with an "S" / Indique con una "S" en el mapa	Crossing Difficulties/ Dificultades para cruzar: Mark with an "X" / Indique con una "X" en el mapa
_____	_____
_____	_____
_____	_____

Unsafe Driver Behavior/ Conductas peligrosas de los conductores:
Mark with a "D" / Indique con una "D" en el mapa

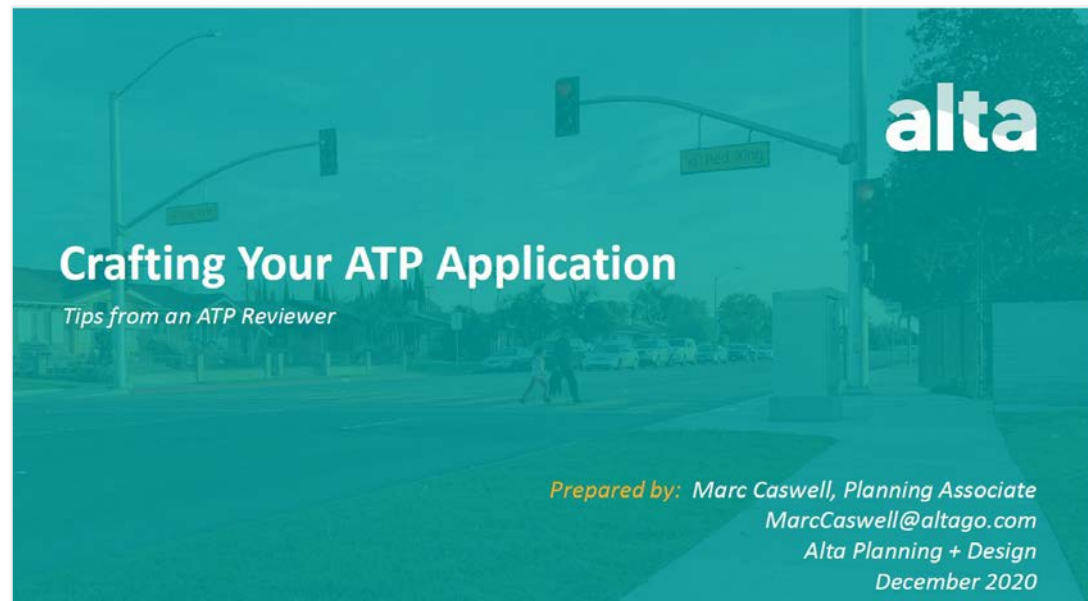
Other Concerns? ¿Otros problemas?
Mark with a "C" and explain here/ Indique con una "C" en el mapa y explique aquí

3. Resources

- Active Transportation Program Grant Technical Assistance
- Completed AT Plans
- Data Analysis
- DCPI Lessons Learned
- Facility Design Guidelines
- Graphics Library
- Needs Assessment
- Outreach
- Plan Adoption
- Recommendations
- Word Tips and Tricks
- Work Plan

- Sample City Council Materials
- Sample Planning Commission Materials

Adopting + Implementing the Plan



Toolkit Launch

- Coming Summer 2021
- Includes all materials for jurisdictions to develop their own active transportation plans
- Visit scag.ca.gov to learn more!



Partnering with Community-Based Organizations



Communication

- Project Team
- Marketing outlets
- Active communication with the community



Active Transportation Plan
TOOLKIT



Demographic

- Language preferences
- Communication preferences



Active Transportation Plan
TOOLKIT

WhatsApp message from Sofia, Fidencia, Ginix, Ma...
SEP 09, 2020, 9:27 AM

Si vives en Perris: 📍

Nos ayudas a llenar esta encuesta por favor?

Es para saber tú opinión en relación a las rutas de bicicleta y andadores en nuestra comunidad

<https://gohumanatp.typeform.com/to/YAA621Q>

**Bike | Walk
PERRIS**

Perris AT Plan Survey (Spanish)
gohumanatp.typeform.com

Facebook post from Love 4 Life Parent Comm...
Tu opinión es muy importante!! El Plan de Transporte Activo de Perris quiere escucharte, la presentación será en español e inglés!! 🚲👶🦽

¡No pierdas la oportunidad de aportar tú opinión!

Link de Zoom 📺
<https://zoom.us/j/96835619487>

Meeting ID: 968 3561 9487

Love 4 Life Association
Posted by Wendy Romero
Sep 2, 2020 · 🌐

Join us TODAY at the City of Perris Virtual Town Hall meeting for more information on the Perris Active Transportation Plan and to give your feed... See More



Local Partnerships

- City
- Businesses
- Education system
- Local organizations



Outreach

- Social Media:
 - Facebook, Instagram, Twitter
 - Polls
 - Posts
 - Stories
 - Local groups
- Email and Phone conversations



Community Engagement

- Families involvement
 - Parent Leadership
 - Youth Leadership
 - Love 4 Life Chapters
- Local events



Community Voice

- Community Feedback
- Residents were part of the process
- Building a sense of community



Bringing the Toolkit to Life



Stanton Active Transportation Plan

*Stanton is a community where streets promote walking and biking in a **safe and convenient** atmosphere for **all ages and abilities**.*



Safety & Health

This Plan will empower residents to live a more active lifestyle by providing a network of safe and comfortable walking routes and bikeways for everyone to enjoy.



Access & Comfort

This Plan will support increased access to neighborhood destinations such as grocery stores, libraries, schools, recreation centers, and transit stops. Pedestrian and bicycle facilities will be accessible and comfortable for people of all ages and abilities to use.



Affordability

This Plan will work to reduce the burden of transportation costs on households.



Maintain & Expand the Network

This Plan will help our community identify, develop, and maintain a complete and convenient bicycle and pedestrian network.

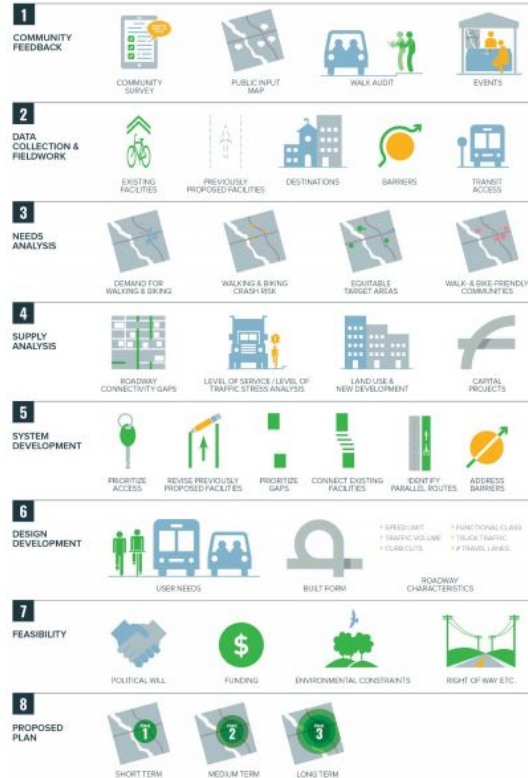
RECOMMENDATIONS

Development Process

- Community Feedback

What We Heard	What We Propose
Our streets do not support safe walking and biking	Make it Safe
People drive too fast	Make it Comfortable
Facilities do not serve all users' needs	Make it Accessible

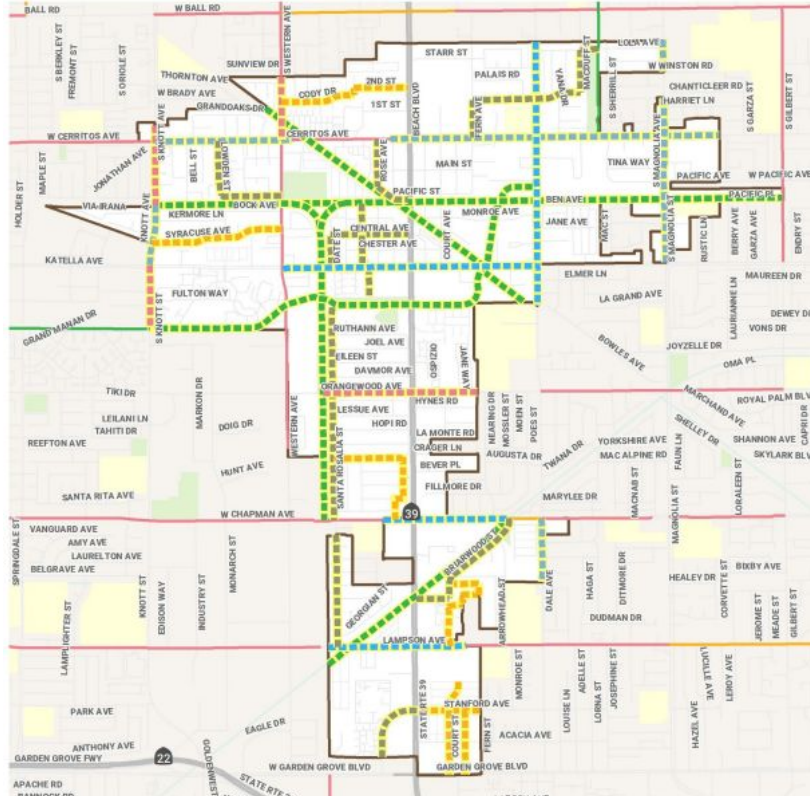
- Existing Conditions
- Previously Planned Facilities
- Project Feasibility + More



Biking Recommendations



Active Transportation Plan
TOOLKIT



Recommended Bikeways

- Shared-Use Path (Class I)
- Bicycle Lane (Class II)
- Buffered Bike Lane (Class IIB)
- Bicycle Route (Class III)
- Bicycle Boulevard (Class IIIB)
- Separated Bikeway (Class IV)

Existing Bikeways

- Shared-Use Path (Class I)
- Bicycle Lane (Class II)
- Bicycle Route (Class III)

Destinations + Boundaries

- City Boundary
- School
- Park or Open Space



Biking Recommendations



CLASS I
Shared-Use Path



CLASS II
Bicycle Lane



CLASS IIB
Buffered Bicycle Lane



CLASS III
Bicycle Route



CLASS IIIIB
Bicycle Boulevard

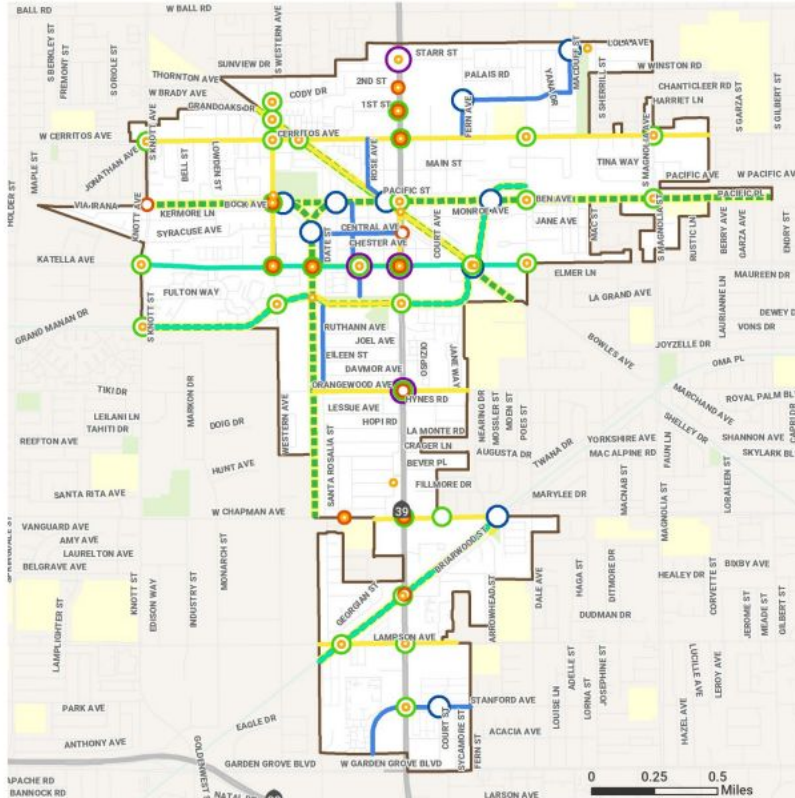


CLASS IV
Separated Bikeway

Pedestrian Recommendations



Active Transportation Plan
TOOLKIT



Pedestrian Recommendations

- Crossing Facilities
- Curb Treatments
- Signals & Beacons
- Traffic Calming
- Transit Stop Amenities
- Green Infrastructure
- Pedestrian-Scale Lighting
- Sidewalks & Paths
- Traffic Calming
- Shared-Use Path (Class I)

Destinations + Boundaries

- City Boundary
- School
- Park or Open Space



Pedestrian Recommendations



Sidewalks & Paths



Crossing Facilities



Curb Treatments



Beacons & Signals



Traffic Calming



Pedestrian-scale Lighting

Challenges



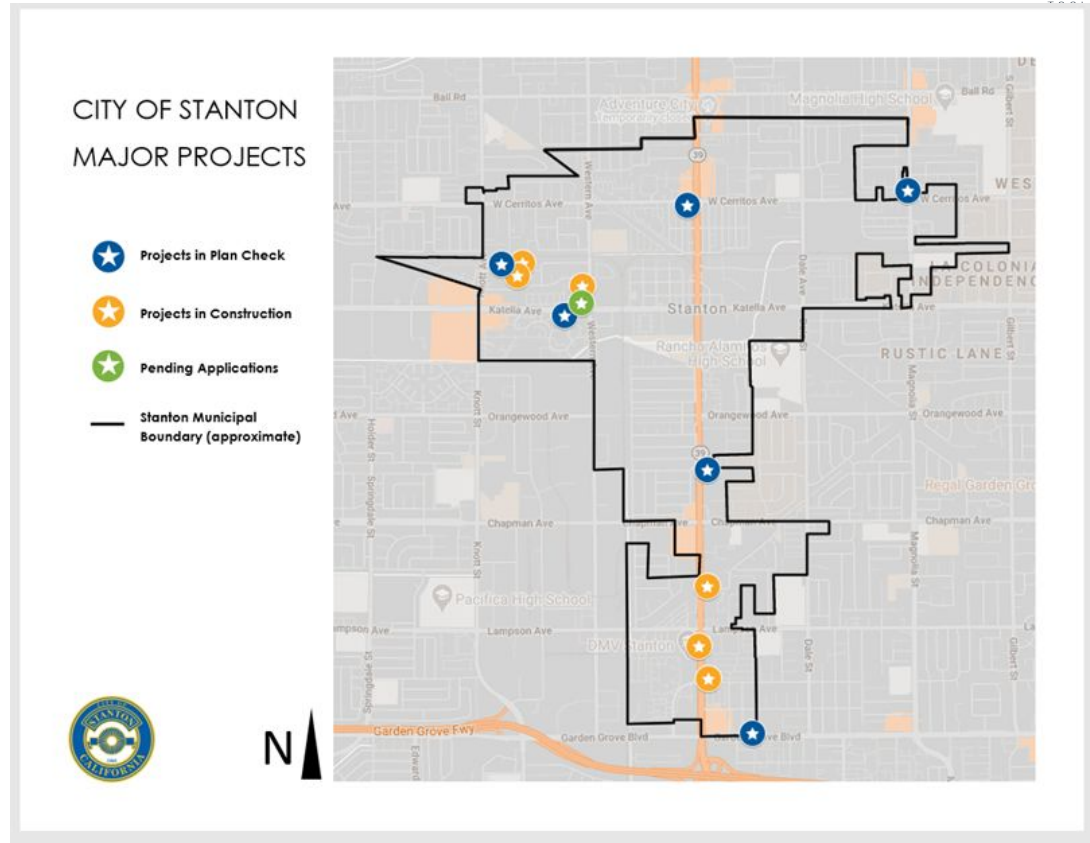
Active Transportation Plan
TOOLKIT



Opportunities



Active Transportation Plan



Opportunities



Active Transportation Plan
TOOLKIT



Next Steps

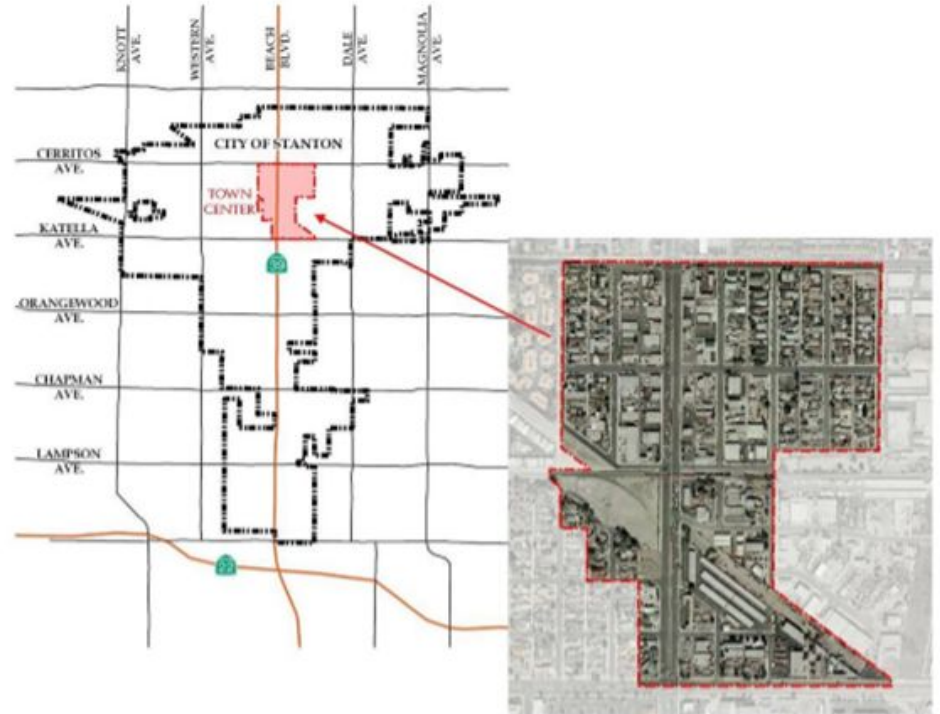
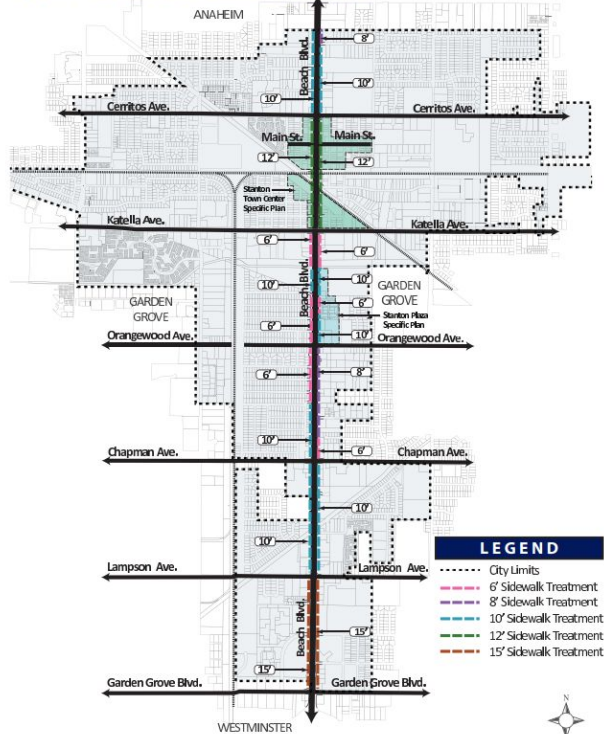
Livable Beach Boulevard Mobility Plan - 2013



Active Transportation Plan
TOOLKIT

Town Center Specific Plan

Figure 4-1 - Recommended Pedestrian Improvements



Questions?



Julia Lippe-Klein

Lippe-Klein@scag.ca.gov

213.236.1856



Sam Corbett

SamCorbett@altago.com

213.235.7710



Wendy Romero

WendyRomero@love4lifeassociation.org

951.575.0294



Jennifer Lilley

JLilley@ci.stanton.ca.us

714.890.4213