

# TRANSPORTATION SAFETY

## REGIONAL EXISTING CONDITIONS

S O U T H E R N C A L I F O R N I A A S S O C I A T I O N O F G O V E R N M E N T S

Recognizing the transportation safety challenges confronting the region, in 2021, SCAG adopted a resolution affirming its regional leadership role and commitment to advancing transportation safety and adopted a Regional Safety Policy that:

- Endorses Toward Zero Deaths (TZD) as part of a comprehensive effort to strive to achieve zero transportation-related fatalities and serious injuries in the SCAG region by 2050.
- Motivates data-driven approaches, including High Injury Networks and safety modeling, to inform safety policy and planning and the strategic use of available funds and resources.
- Promotes equity in regional safety policies and plans by considering and analyzing impacts on Priority Equity Communities and protecting vulnerable roadway users such as pedestrians, bicyclists, older adults, and youth.
- Engages regional stakeholders in transportation safety policy and plan development, implementation, and evaluation with the goal of achieving alignment with TZD.
- Provides leadership at the state and regional levels to promote transportation safety, including supporting statewide efforts such as the Strategic Highway Safety Plan and legislation that furthers TZD.

SCAG depends on data to make better transportation decisions that result in fewer fatalities and serious injuries and to find solutions to make the region safer for everyone. In support of this effort, SCAG completed an analysis of the region's existing transportation safety conditions and some of the key facts are presented on this factsheet.

### SCAG Region BY THE NUMBERS



**18.5** MILLION  
POPULATION



**8.9** FATALITIES  
PER 100,000 RESIDENTS



**39** SERIOUS INJURIES  
PER 100,000 RESIDENTS



**1,638** PEOPLE DIE  
EVERY YEAR FROM  
COLLISIONS



**7,425** PEOPLE SUSTAIN  
SERIOUS INJURIES EVERY  
YEAR FROM COLLISIONS



**124,000** PEOPLE  
SUSTAIN INJURIES EVERY  
YEAR FROM COLLISIONS



**225** COLLISIONS OCCUR  
EACH DAY ON REGIONAL  
ROADWAYS (ROUGHLY  
**82,000** PER YEAR)



**34%** OF ALL FATALITIES  
INVOLVE PEOPLE  
WALKING OR BICYCLING



**22%** OF ALL FATAL  
PEDESTRIAN  
VICTIMS ARE AGE  
65 AND OLDER



**38%** OF ALL FATAL  
COLLISION VICTIMS  
ARE AGE 18-34



**94%** OF ALL  
COLLISIONS OCCUR  
IN URBAN AREAS



**65%** OF ALL  
COLLISIONS OCCUR  
ON LOCAL ROADS



**26%** OF ALL  
COLLISIONS OCCUR  
ON HIGHWAYS



**7,934** ANNUAL  
VEHICLE MILES  
TRAVELED (VMT)  
PER CAPITA



**1.2** FATALITIES  
PER 100M VMT

**5.0** SERIOUS  
INJURIES PER 100M VMT

### Why are collisions occurring?



One of the top contributing factors of all collisions is unsafe speed.

Speed is the critical factor in the seriousness of collisions.



#### HIT BY A VEHICLE TRAVELING AT 25 MPH



**89%** chance of survival.

#### HIT BY A VEHICLE TRAVELING AT 40 MPH



**35%** chance of survival.

# Riverside County BY THE NUMBERS



**2.4** MILLION  
POPULATION



**12.9** FATALITIES  
PER 100,000 RESIDENTS



**43** SERIOUS INJURIES  
PER 100,000 RESIDENTS



**314** PEOPLE DIE EVERY  
YEAR FROM COLLISIONS



**1,047** PEOPLE SUSTAIN  
SERIOUS INJURIES EVERY  
YEAR FROM COLLISIONS



**14,185** PEOPLE  
SUSTAIN INJURIES EVERY  
YEAR FROM COLLISIONS



**9,985** COLLISIONS OCCUR  
EACH YEAR (ABOUT **27** PER DAY)



**27%** OF ALL TRAFFIC  
FATALITIES INVOLVE PEOPLE  
WALKING OR BICYCLING



**16%** OF ALL FATAL  
PEDESTRIAN VICTIMS  
ARE AGE 65 AND OLDER



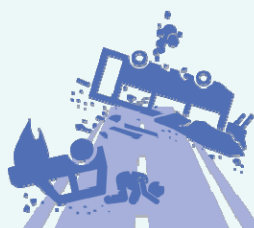
**40%** OF ALL FATAL  
COLLISION VICTIMS  
ARE AGE 18–34



**88%** OF ALL COLLISIONS  
OCCUR IN URBAN AREAS



**67%** OF ALL COLLISIONS  
OCCUR ON LOCAL ROADS



**25%** OF ALL COLLISIONS  
OCCUR ON HIGHWAYS



**8,713** ANNUAL  
VEHICLE MILES TRAVELED  
(VMT) PER CAPITA



**1.5** FATALITIES  
PER 100M VMT

**5.0** SERIOUS INJURIES  
PER 100M VMT

\*Data is from Transportation Injury Mapping System (TIMS), Statewide Integrated Records System (SWITRS), and the California Safety PM Target Setting Supporting Tool



Southern California Association of Governments  
900 Wilshire Blvd., Ste. 1700  
Los Angeles, CA 90017  
(213) 236-1800 | [www.scag.ca.gov](http://www.scag.ca.gov)

## HAVE ADDITIONAL QUESTIONS?

Review the SCAG Regional Transportation Safety Existing Conditions report at:  
[scag.ca.gov/transportation-safety](http://scag.ca.gov/transportation-safety)  
or email Mike Gainor at: [gainor@scag.ca.gov](mailto:gainor@scag.ca.gov).



Please recycle factsheets