

TRANSPORTATION SAFETY

REGIONAL EXISTING CONDITIONS

S O U T H E R N C A L I F O R N I A A S S O C I A T I O N O F G O V E R N M E N T S

Recognizing the transportation safety challenges confronting the region, in 2021, SCAG adopted a resolution affirming its regional leadership role and commitment to advancing transportation safety, and adopted a Regional Safety Policy that:

- Endorses Toward Zero Deaths (TZD) as part of a comprehensive effort to strive to achieve zero transportation-related fatalities and serious injuries in the SCAG region by 2050.
- Motivates data-driven approaches, including High Injury Networks and safety modeling, to inform safety policy and planning and the strategic use of available funds and resources.
- Promotes equity in regional safety policies and plans by considering and analyzing impacts on Priority Equity Communities and protecting vulnerable roadway users such as pedestrians, bicyclists, older adults, and youth.
- Engages regional stakeholders in transportation safety policy and plan development, implementation, and evaluation with the goal of achieving alignment with TZD.
- Provides leadership at the state and regional levels to promote safety, including supporting statewide efforts such as the Strategic Highway Safety Plan and legislation that furthers TZD.

SCAG depends on data to make better transportation decisions that result in fewer fatalities and serious injuries and to find solutions to make the region safer for everyone. In support of this effort, SCAG completed an analysis of the region's existing transportation safety conditions and some of the key facts are presented on this factsheet.

SCAG Region BY THE NUMBERS



18.5 MILLION
POPULATION



8.9 FATALITIES
PER 100,000 RESIDENTS



39 SERIOUS INJURIES
PER 100,000 RESIDENTS



1,638 PEOPLE DIE
EVERY YEAR FROM
COLLISIONS



7,425 PEOPLE SUSTAIN
SERIOUS INJURIES EVERY
YEAR FROM COLLISIONS



124,000 PEOPLE
SUSTAIN INJURIES EVERY
YEAR FROM COLLISIONS



225 COLLISIONS OCCUR
EACH DAY ON REGIONAL
ROADWAYS (ROUGHLY
82,000 PER YEAR)



34% OF ALL FATALITIES
INVOLVE PEOPLE
WALKING OR BICYCLING



22% OF ALL FATAL
PEDESTRIAN
VICTIMS ARE AGE
65 AND OLDER



38% OF ALL FATAL
COLLISION VICTIMS
ARE AGE 18-34



94% OF ALL
COLLISIONS OCCUR
IN URBAN AREAS



65% OF ALL
COLLISIONS OCCUR
ON LOCAL ROADS



26% OF ALL
COLLISIONS OCCUR
ON HIGHWAYS



7,934 ANNUAL
VEHICLE MILES
TRAVELED (VMT)
PER CAPITA



1.2 FATALITIES
PER 100M VMT

5.0 SERIOUS
INJURIES PER 100M VMT

Why are collisions occurring?



One of the top contributing factors of all collisions is unsafe speed.

Speed is the critical factor in the seriousness of collisions.

HIT BY A VEHICLE TRAVELING AT 25 MPH



89% chance
of survival

HIT BY A VEHICLE TRAVELING AT 40 MPH



35% chance
of survival

San Bernardino County BY THE NUMBERS



2.2 MILLION
POPULATION



18 FATALITIES
PER 100,000 RESIDENTS



50 SERIOUS INJURIES
PER 100,000 RESIDENTS



392 PEOPLE DIE EVERY
YEAR FROM COLLISIONS



1,108 PEOPLE SUSTAIN
SERIOUS INJURIES EVERY
YEAR FROM COLLISIONS



14,686 PEOPLE
SUSTAIN INJURIES EVERY
YEAR FROM COLLISIONS



10,378 COLLISIONS OCCUR
EACH YEAR (ROUGHLY **28** PER
DAY)



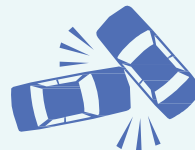
28% OF ALL TRAFFIC
FATALITIES INVOLVE PEOPLE
WALKING OR BICYCLING



14% OF ALL FATAL
PEDESTRIAN VICTIMS
ARE AGE 65 AND OLDER



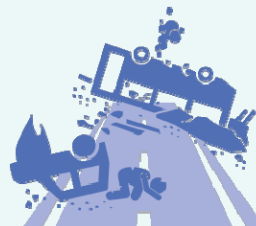
38% OF ALL FATAL
COLLISION VICTIMS
ARE AGE 18–34



83% OF ALL COLLISIONS
OCCUR IN URBAN AREAS



62% OF ALL COLLISIONS
OCCUR ON LOCAL ROADS



29% OF ALL COLLISIONS
OCCUR ON HIGHWAYS



10,242 ANNUAL
VEHICLE MILES TRAVELED
(VMT) PER CAPITA



1.8 FATALITIES
PER 100M VMT

5.0 SERIOUS INJURIES
PER 100M VMT

*Data is from Transportation Injury Mapping System (TIMS), Statewide Integrated Records System (SWITRS), and the California Safety PM Target Setting Supporting Tool



Southern California Association of Governments
900 Wilshire Blvd., Ste. 1700
Los Angeles, CA 90017
(213) 236-1800 | www.scag.ca.gov

HAVE ADDITIONAL QUESTIONS?

Review the SCAG Regional Transportation Safety Existing Conditions report at:

scag.ca.gov/transportation-safety

or email Mike Gainor at: gainor@scag.ca.gov.



Please recycle factsheets