

Regional Planning Working Group

April 16, 2026





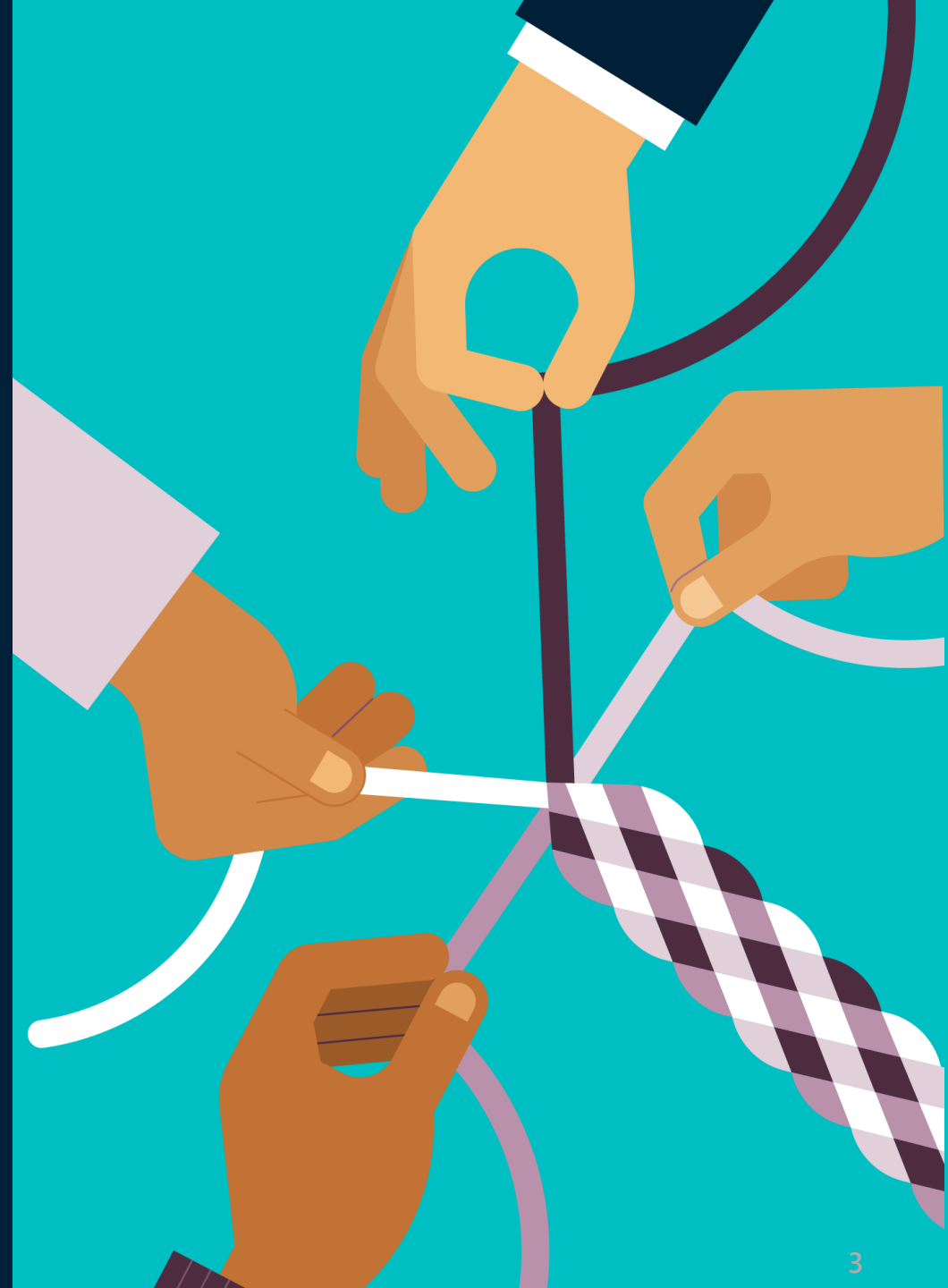
AGENDA

1. **RESTRUCTURED RPWG**
2. **2026 STATE OF THE REGION REPORT**
3. **NATURAL & AGRICULTURAL LANDS ECONOMIC AND RESILIENCE BENEFITS STUDY (NAL-BEN)**
4. **REGIONAL RESILIENCE TOOLKIT**
5. **WATER RESOLUTION WHITE PAPER**
6. **ANNOUNCEMENTS**





RESTRUCTURE OF THE RPWG



Regional Planning Working Group (RPWG) Restructure



- **Updated purpose:**

Reflecting the intersectional nature of SCAG's work to foster innovative regional solutions, the Regional Planning Working Group is a forum for SCAG to share current projects and best practices with the public to facilitate holistic discussions that shape SCAG's work and support local implementation of the regional goals.

Regional Planning Working Group (RPWG) Restructure

- **One unified monthly forum**
 - Integrated agendas will cover multiple focus areas
 - Remains a non-decision-making body



QUESTIONS?

For more information, please visit:

www.scag.ca.gov/regional-planning-working-group

Email questions to:

ConnectSoCal@scag.ca.gov



The Southern California Association
of Governments' 2024–2050
Regional Transportation Plan/
Sustainable Communities Strategy

2026 State of the Region Report

April 16, 2026

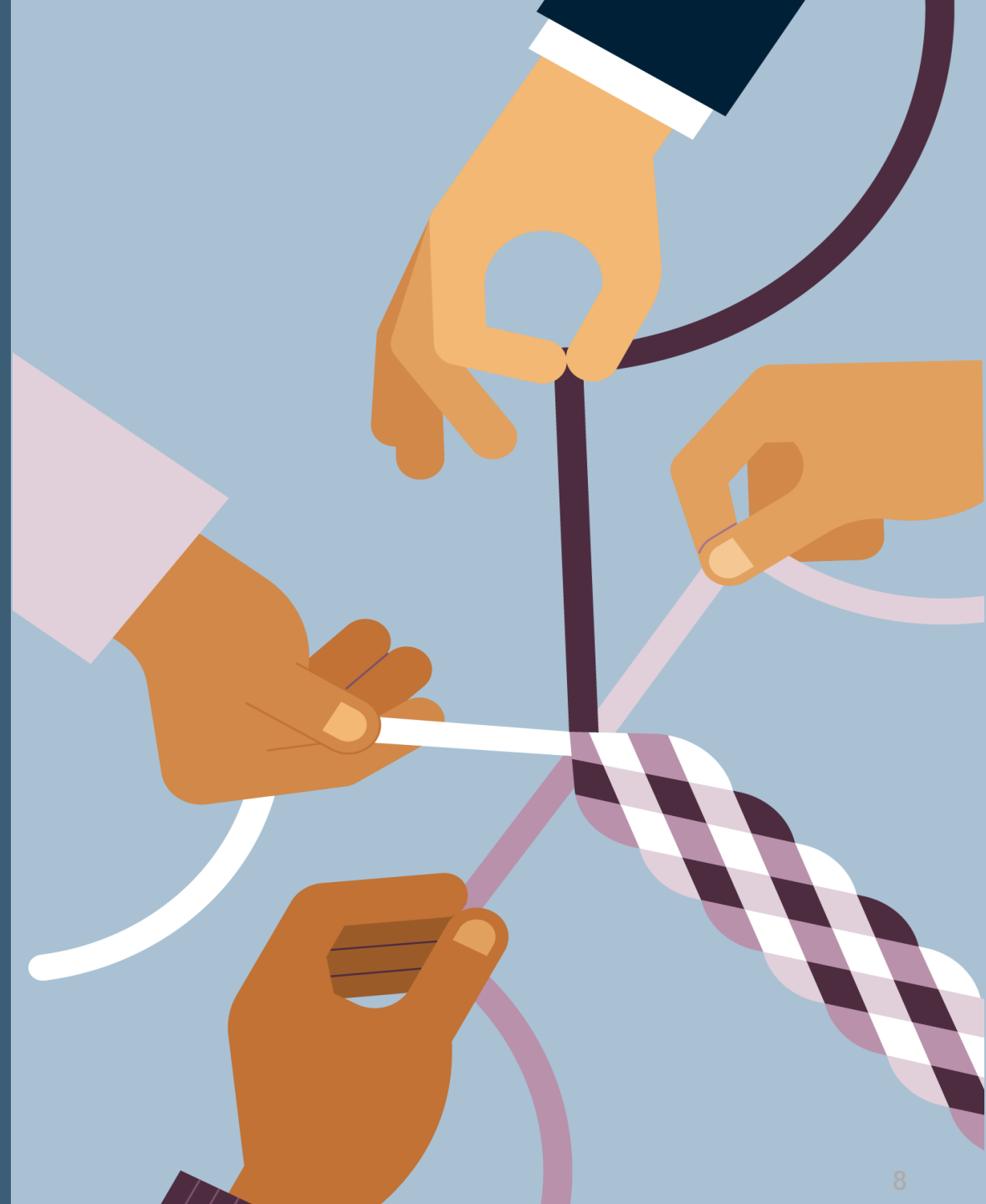
Regional Planning Working Group





AGENDA

- Overview
- Report Findings
- StoryMap Walkthrough
- Use Case Scenarios
- Q&A





Purpose

The State of the Region report provides a baseline regional performance assessment to help **identify** future needs and **highlight** emergent issues in the SCAG region





State of the Region Report Overview

Context

- Previous reports published from 2000 to 2007
- Historical trends and current conditions

Content

- 49 metrics
- Focus on:
 - Demographics
 - Mobility
 - Communities
 - Environment
 - Economy

Data

- 2000 to 2024*
 - **Point-in-time (data collected for select years only)*
- Various data sources
(years reported dependent on data availability)

StoryMap

- Engaging interface
- Easy navigation
- Interactive charts





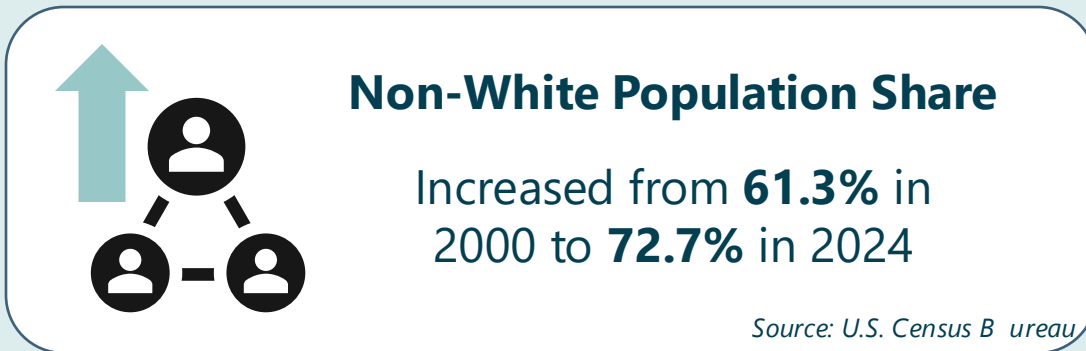
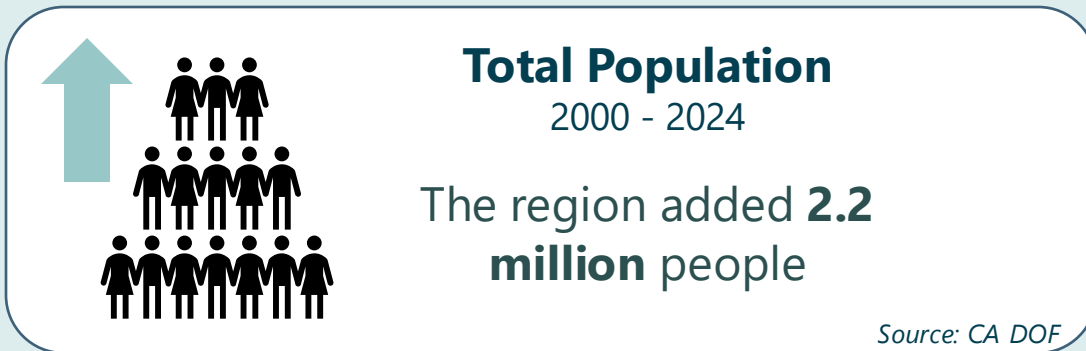
REPORT FINDINGS





Planning for a Changing Population

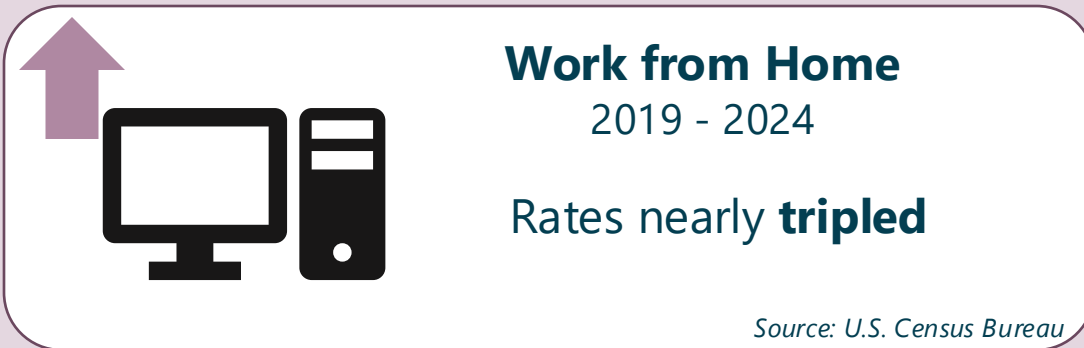
The population's composition is changing, with shifts in racial diversity and educational attainment.





Regional Mobility is Evolving

How people travel has changed since the pandemic, but safety challenges persist.





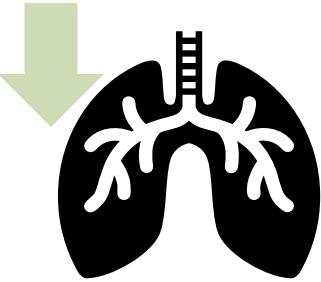
Preparing for Environmental Challenges

Some aspects of the human environmental footprint are improving, but climate vulnerabilities are worsening.



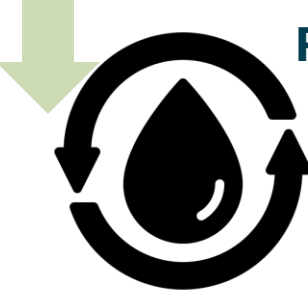
Daily VMT per capita
2000 – 2023
Decreased by **8%**

Source: HPMS, DOF



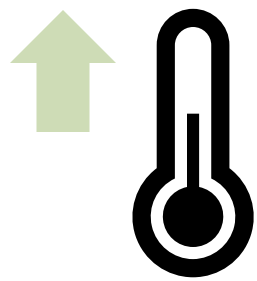
Criteria Air Pollutants
2000 – 2024
CO: -66% **PM 10:** -40%
NOx: -76% **PM 2.5:** -57%

Source: CARB Standard Emission Tool



Residential Water Consumption
2014 – 2024
Decreased by **27%**

Source: CA SWRCB Water Conservation Report



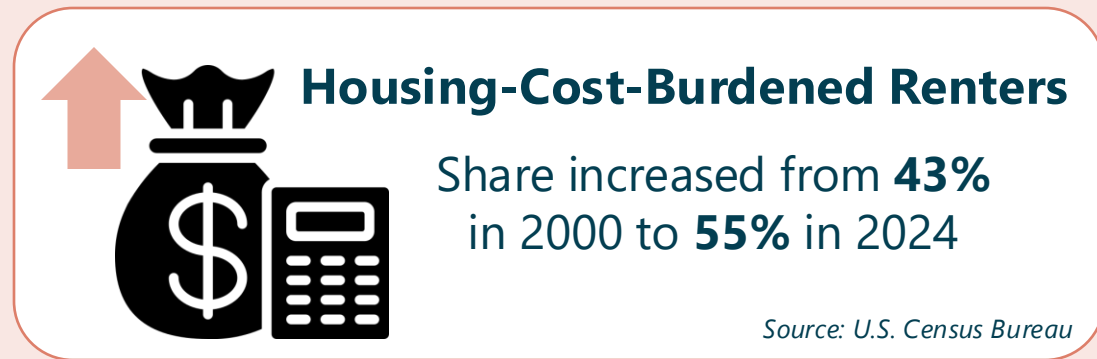
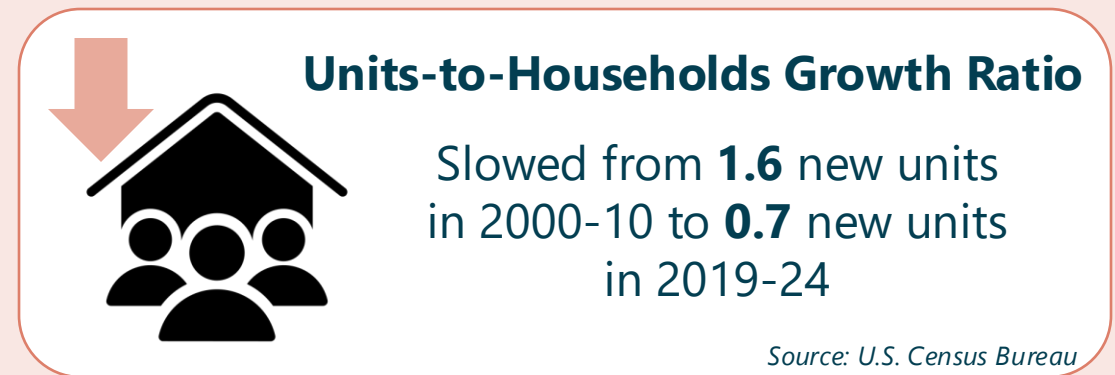
Extreme Heat Days
2000 – 2023
Average increase from
1 to 5 days

Source: National Environmental Public Health Tracking Network



Navigating Persistent Housing Strains

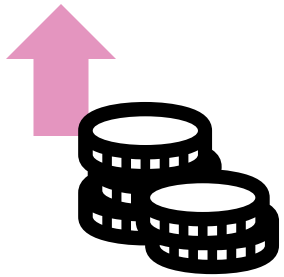
There is a continued imbalance of housing need and supply.





Achieving Economic Resilience

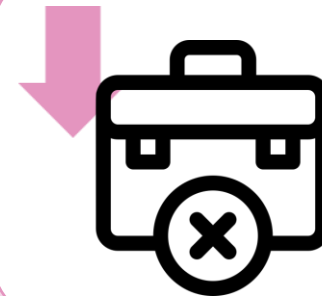
Economic resilience is reflected in income and job growth alongside reduced unemployment and poverty.



Median Household Income

Increased from **\$45,844** in 2000 to **\$96,154** in 2024

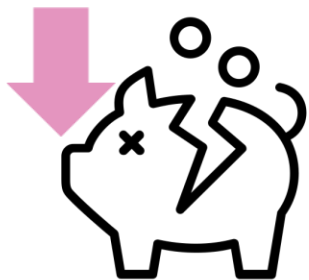
Source: U.S. Census Bureau



Unemployment Rate

Recovered to **5.4%** in 2024 since peaking to **12.5%** in 2010

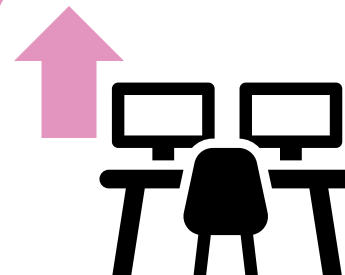
Source: CA EDD



Poverty Rate

Decreased from **15.4%** in 2000 to **12.0%** in 2024

Source: U.S. Census Bureau



Total Jobs

2000-2024

Increased by **16%**

Source: CA EDD



STORYMAP WALKTHROUGH



Collection

2026 State of the Region Report

This report provides a baseline performance assessment to help identify future regional needs and emergent issues in the SCAG region.

SCAG | April 2026

[Get started](#)

Visit the Help Page to learn more about how to navigate the report and interact with the charts.



1 Prelude



2 Introduction



3 Demographics



4 Mobility



5 Communities



6 Environment



7 Economy



8 Conclusion



9 Help Page



USE CASE SCENARIOS





Use Case Scenarios

- “Imagine you’re a planner working on ____, where would you click first?”
- Scenarios:
 - Planning Policy Documents:
 - General Plan Updates
 - Housing Element
 - Mobility Element
 - Environmental Justice Element
 - Demographic Reports
 - Environmental Documents: EIRs
 - Public Meetings & Planning Commission Meetings





QUESTIONS?



View the 2026 State of the Region Report



For more information, contact:

Anita Au, Planning Supervisor
au@scag.ca.gov

Jeannie Ma, Assistant Regional Planner
ma@scag.ca.gov

Jasper Dwyer, Junior Planner
dwyerj@scag.ca.gov





Natural & Agricultural Lands Economic and Resilience Benefits Study

Overview

Regional Planning Working Group

April 16, 2026

WWW.SCAG.CA.GOV

Agenda

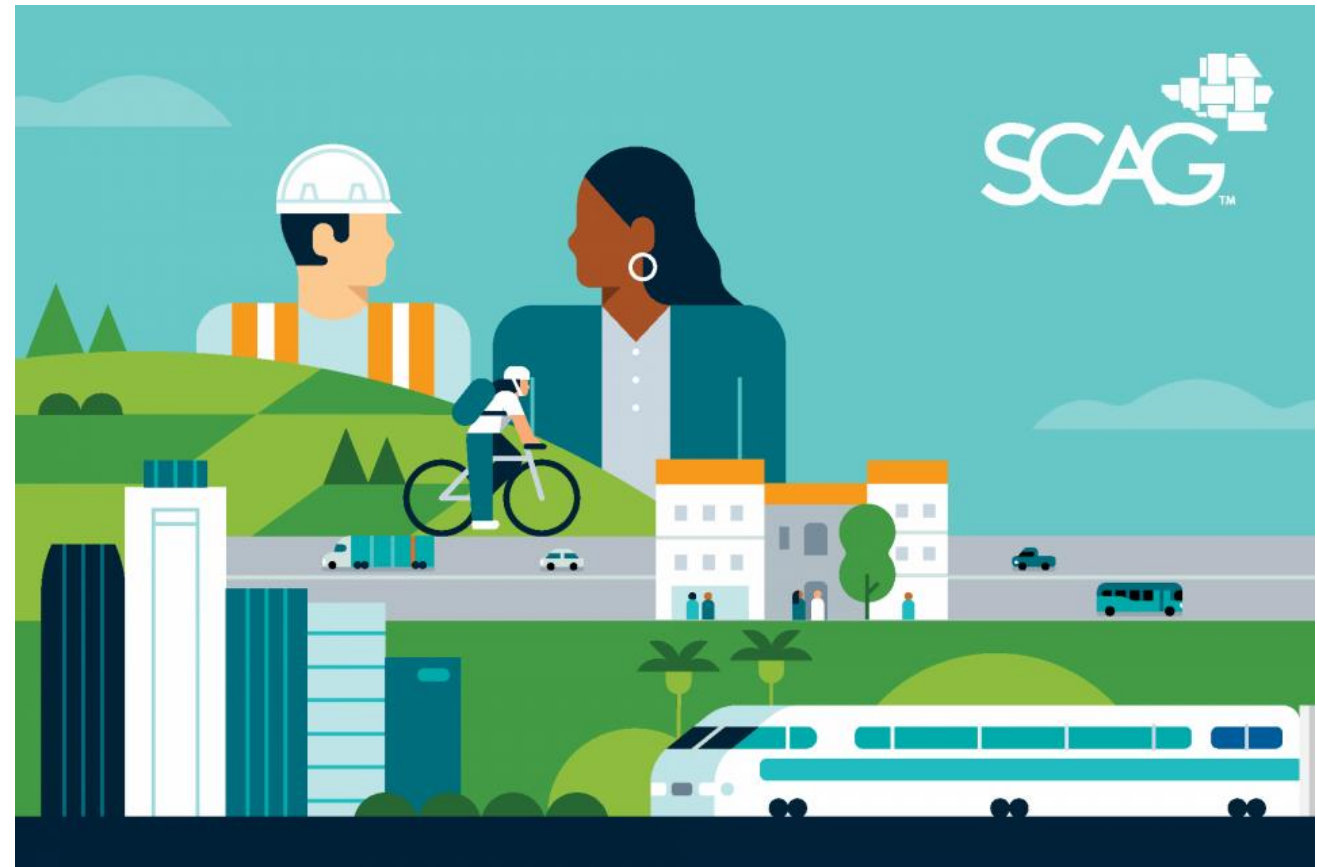
- Project purpose and context
- Study scope and key benefits
- Stakeholder insights
- Next Steps

Enhancing Resilience: Connect SoCal

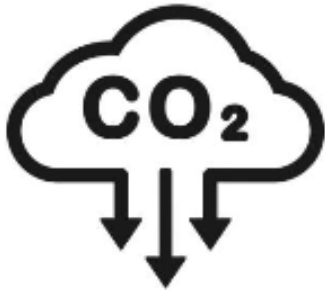


Resilient built, social, economic, and natural systems are necessary for a thriving region, especially when factoring in climate change

Strategic conservation, enhancement, and restoration of natural and ag lands plays an important role in resilient systems



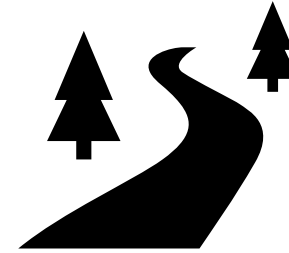
Key services/benefits of natural and agricultural lands include:



Reduced climate emissions:

Carbon sequestration

Avoided vehicle miles traveled
(VMT)



Resilience and adaptation:

Water filtration and storage

Cleaner air

Hazard risk reduction (ex. wildfires,
flooding, etc.)

Access to open space for recreation

Local food production, jobs, and tourism

Technical study to fill information gaps:



More information on ecosystem services

Informs local jurisdiction policy and planning processes.



More information on resilience to hazards and climate change

Informs strategies to reduce risks from flooding, wildfires, and climate change impacts in the region.



More information on funding and financing

Connects jurisdictions to resources and tools to preserve, enhance, and/or restore important natural and ag lands.



What will this study include?

Technical Analysis

Baseline analysis of natural and agricultural lands

- Key characteristics and trends (soil and habitat types, crop variety and production value, etc.)

Assessment of ecosystem services and resilience benefits

- Economic valuation of services and benefits from different typologies of natural and agricultural lands

Funding strategies for conservation efforts

- Effective pathways to fund strategic conservation, restoration, and/or enhancement

White Paper and Resource Appendix

- Model policies, summaries of technical analyses, and case studies.

Implementation Support



Study will also explore farmworker housing

- Will be a separate, stand-alone study
- Evaluation of existing farmworker housing stock and proximity to workplaces
- Identification of funding opportunities to increase affordability of farmworker housing



Stakeholder process: Fall 2025 – Spring 2027

- Interviews, listening sessions
- Stakeholder Working Groups (3-5)
- Includes targeted stipends for community-based orgs
- Stakeholder feedback will inform the study in all stages



Stakeholder Listening Sessions Trends: Natural Lands

LAND CONVERSION & THREATS

San Bernardino & Riverside Counties are among the state's highest land conversion areas

Natural and agricultural lands decreased by **30–40% in parts of Riverside County**

Conservation easements and fees cited as effective strategies for protecting natural lands — though quality of some easements is declining due to maintenance gaps.

ECOSYSTEM SERVICES & BENEFITS

Chaparral shrublands provide carbon sequestration, water filtration, groundwater recharge, etc.

Natural lands serve as buffers for floodwaters and wildfires and have potential to reduce extreme heat.

Connected floodplains more effectively conserve habitats than disjointed projects.

Tribal ecological knowledge should be uplifted in conservation.

FUNDING & DATA GAPS

Federal funding is scaling back for conservation, hazard mitigation, and nature-based solutions

O&M costs are rarely covered by state/federal grant.

Need for centralized data platforms and county-level carbon sequestration data to support regional planning.

Stakeholder Listening Sessions Trends

LAND CONVERSION & THREATS

San Bernardino & Riverside Counties are among the state's highest land conversion areas.

Solar energy development is a growing pressure in the Inland Empire and Imperial County.

Generational Succession and aging farming population – younger generation less interested in farming.

ECOSYSTEM SERVICES; CONCERNS & BENEFITS

Water availability and groundwater recharge are major concerns for ag lands.

Irrigated agricultural lands can serve as **green belt buffers that slow wildfire spread**.

Farmland helps mitigate extreme heat (especially in the Imperial Valley).

FUNDING & DATA GAPS

Grant programs largely exclude small farmers due to scale thresholds.

Ventura County farmers expressed interest in **carbon markets as an alternative revenue stream** (noting that organic markets are oversaturated).

General lack of resources and expertise needed to join ES markets.

Project Timeline





THANK YOU!



Regional Resilience Toolkit

Regional Planning Working Group

April 16, 2026

WWW.SCAG.CA.GOV

Agenda

- Why plan for resilience?
- Goals and objectives
- Toolkit framework
- How jurisdictions can use the Toolkit

Planning ahead helps jurisdictions reduce risk, protect residents, and recover more quickly.

Why plan for resilience?

RECOVER FROM SHOCKS

Wildfires, Flooding, Mudslides,
Extreme Heat, Earthquakes,
Pandemic &
Public Health Crises



ADDRESS STRESSORS

Housing Affordability Crisis, Aging
Infrastructure, Economic
Inequality, Water Scarcity, Public
Health Disparities

**"Every \$1 invested in resilience saves \$13 in damages
and indirect consequences "** - *U.S Chamber of Commerce*

SCAG plays several important roles to support and enhance regional resilience

Shared Challenges, Shared Responsibility.

SCAG plays several important roles to support and enhance regional resilience, including:



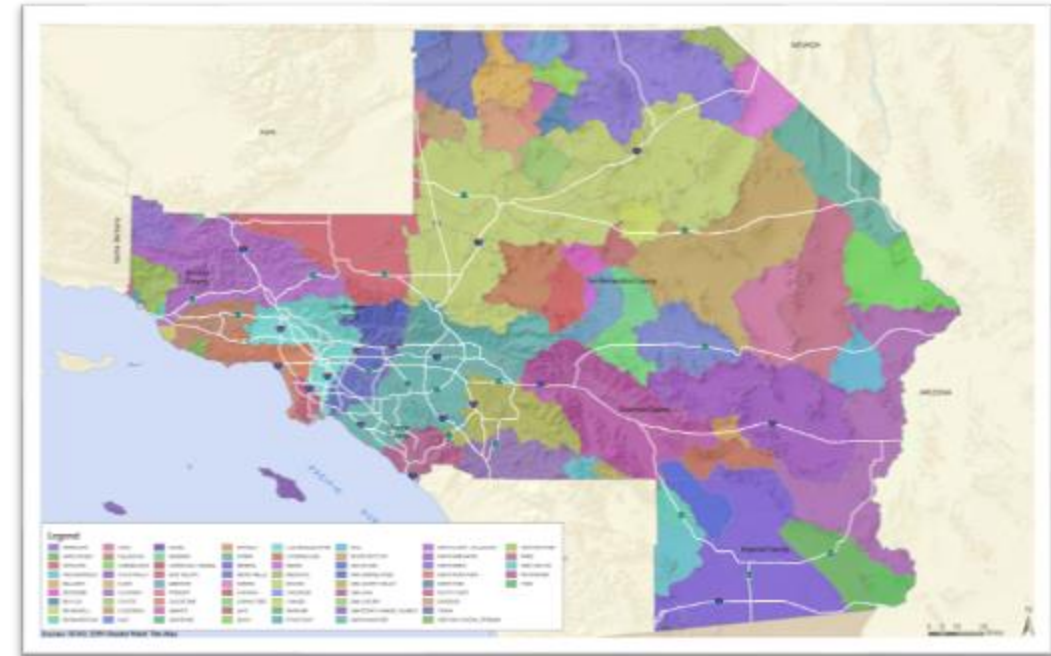
Developing and disseminating recommended policies to local jurisdictions to enhance resilience



Providing resources to support resilience efforts including data, tools, funding, technical guidance, best practices, and research



Convening jurisdictions, agencies, and other stakeholders to collaborate, share knowledge, and advance regional resilience goals



Goals & Objectives of the Toolkit



Understand the benefits of local and regional resilience planning.



Plan for resilience at a range of scales, from integrating resilience into existing plans and programs to developing a standalone plan.



Clearly outline key steps to resilience planning

A practical guide for cities, counties, and agencies to build community resilience, step by step.

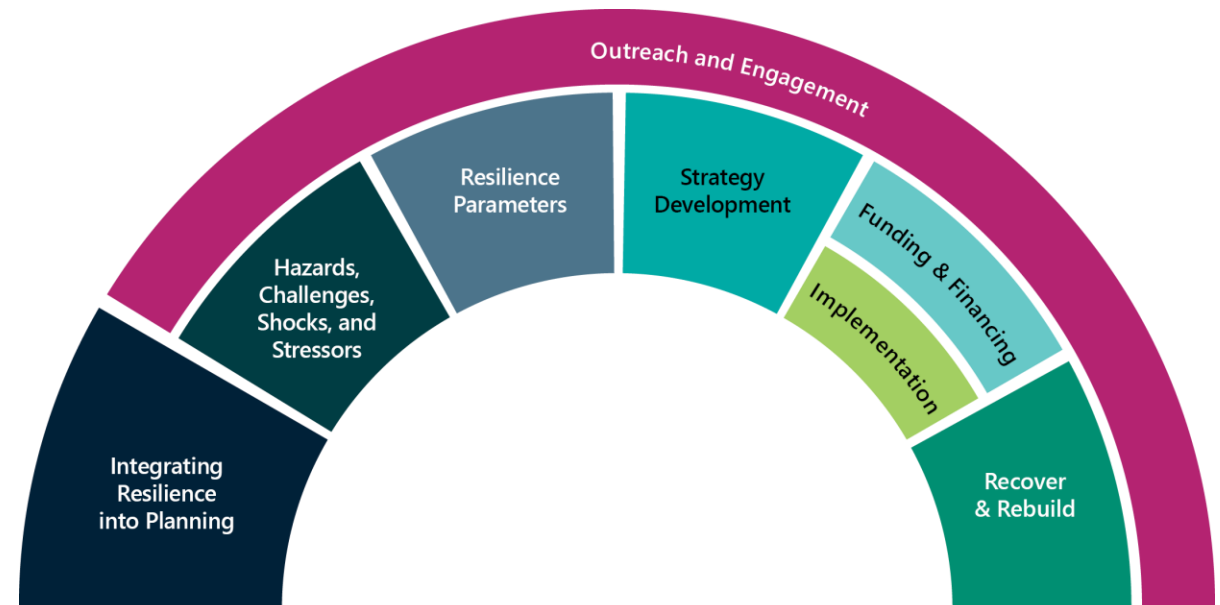
Key Framework of the Toolkit

PURPOSE & AUDIENCE

- Flexible & scalable
- Local & regional focus
- For agency staff

HOW TO USE THE TOOLKIT

- Start anywhere - flexible entry points
- Use as a step-by-step guide or to fill specific gaps
- Includes tools, templates, case examples, and resources
- Supports compliance with state mandates & grant requirements



Effective resilience starts with understanding a community's unique risk profile – across shocks and stressors.

Understanding Local and Regional Risks

SHOCKS AND STRESSORS



- Identify local shocks
- Recognize chronic stressors
- Understand how shocks & stressors interact to amplify risk

VULNERABILITY & EXPOSURE

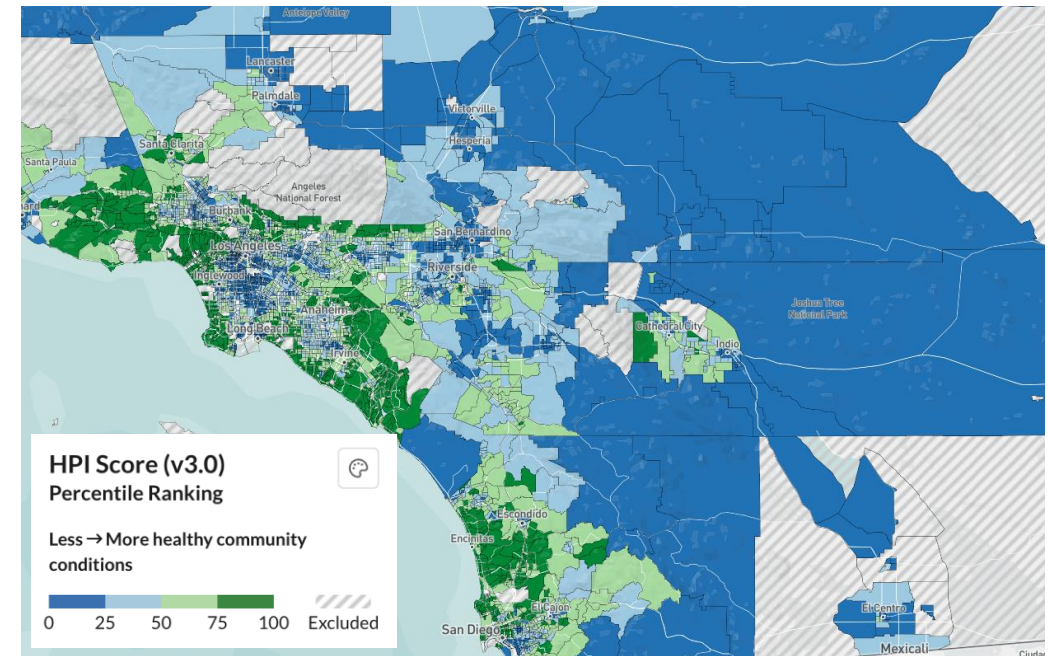
- Analyze who is most at risk
- Assess critical infrastructure exposure
- Prioritize vulnerable populations and assets

DEFINE RESILIENCE PLANNING PARAMETERS

- Define resilience goals and planning framework
- Identify how resilience fits into existing plans and programs
- Align local priorities with regional coordination

REGIONAL AND LOCAL INTEGRATION

- Combine regional-scale data with local knowledge
- Coordinate across jurisdictions on shared risks
- Inform local actions with a regional resilience perspective



Community and Stakeholder Engagement



IDENTIFY & PRIORITIZE STAKEHOLDERS

- Identify community partners, agencies, and regional stakeholders
- Focus on vulnerable and disproportionately impacted communities
- Understand local priorities, risks, and lived experiences

Engagement helps ensure resilience planning reflects real community needs.



DESIGN AN ENGAGEMENT PROCESS

- Integrate engagement throughout planning and implementation
- Use inclusive and accessible outreach approaches
- Coordinate across departments and jurisdictions

Ongoing engagement strengthens collaboration and supports better decision-making.



INFORM STRATEGIES & RECOVERY

- Use community input to shape resilience strategies
- Align actions with local priorities and capacities
- Support equitable recovery planning and implementation

Engagement improves outcomes before, during, and after disruptions.

From Plan to Action - Choosing the Right Strategies



Framing the challenge

Exploring Solutions

Focusing Action

Identify a Menu of Strategies:

Identify actions that address priority risks and align with local goals and capacity.

Evaluate and Prioritize Strategies

Assess actions based on feasibility, impact, cost, and co-benefits.

Tailored, Not One-Size-Fits-All:

Develop relevant strategies that reflect local priorities.

Select priority actions:

Prioritize strategies with the greatest resilience benefits.

Consider Co-Benefits:

Advance resilience while supporting health, equity, and economic outcomes.

Fund, Implement, and Monitor

Identify funding and integrate actions into plans and projects.

Coordinate

implementation: Define roles, timelines, and partnerships to move strategies into implementation.

Track Progress and Adjust:

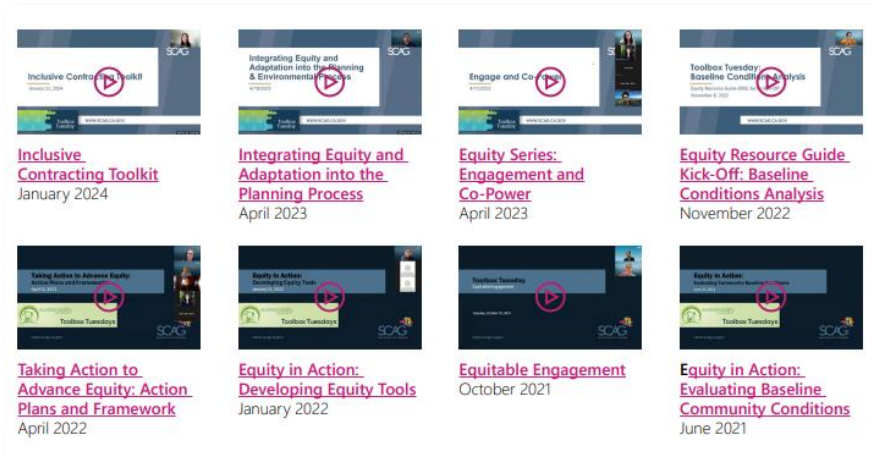
Monitor implementation and refine strategies over time.

Continuous improvement:

Update approaches as conditions and priorities change.

Resources

- ✓ General resilience planning resources
- ✓ Example plans and opportunities to incorporate resilience
- ✓ Tools for characterizing shocks and stressors
- ✓ Illustrative case studies from across the SCAG region
- ✓ Resources for engaging with vulnerable and impacted communities
- ✓ Example strategies



<p>Tools to Support Social Resilience</p>	<p>Healthy Places Index Policy Guides The HPI Policy Action Guides provide evidence-backed policies across the topics of social, transportation, economics, housing, and more. For each HPI indicator, it provides policies, evidence, and links to tool and resources.</p>
<p>Trust for Public Land Provides maps to support open space development and park planning.</p>	<p>The Transformative Climate Communities (TCC) Program The TCC Program evaluation reports, developed by the UCLA Luskin Center for Innovation, provide progress reports, lessons learned, and case studies on TCC implementation projects, which serve as models for comprehensive community-led action, including efforts to build social resilience.</p>
<p>Resilience Before Disaster: The Need to Build Equitable, Community-Driven Social Infrastructure by the Asia-Pacific Environment Network (APEN), SEIU California, and BlueGreen Alliance focuses on resilience hubs and resilience at home as a framework for supporting the resilience for California's most vulnerable communities.</p>	

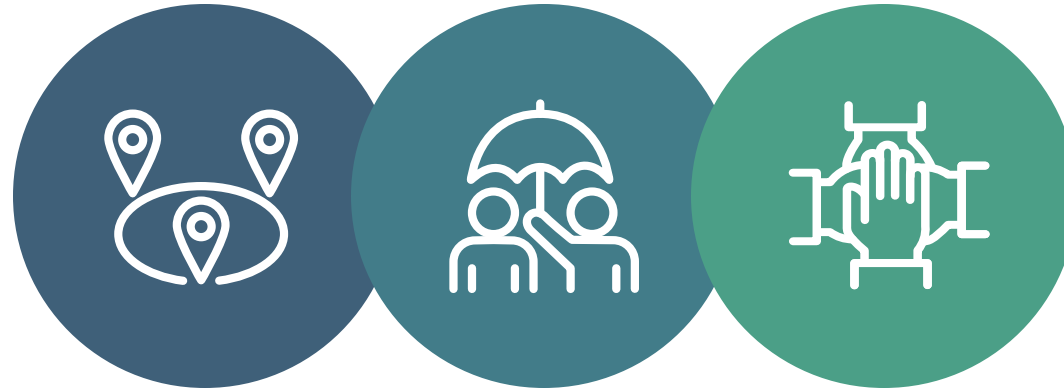
Plan Type	Resilience Components	Advantages and Benefits	Disadvantages and Challenges
PLANS FOR RESILIENCE INTEGRATION			
General Plan	<p>Safety element (or LHMP) required to include climate adaptation by SB 379 (2015); integration of LHMP into safety element incentivized by AB 2140 (2006).</p> <p>Safety element also required to include climate adaptation and resilience at each update of the housing element or the LHMP at least every 8 years.</p> <p>Consider exposure to hazards in zoning code updates and land use plans.</p>	<p>Can comprehensively enhance resilience by incorporating into each general plan element, such as housing, land use, circulation, etc.</p> <p>Individual elements can be updated on their own.</p> <p>Carries force of law.</p> <p>Established public process.</p>	<p>Not all elements are updated regularly.</p> <p>General plan update processes can take 2-3 years.</p> <p>Requires political will.</p> <p>Limited funding for planning and implementation, especially for smaller jurisdictions.</p>
Community Plans, Specific Plans, and Master Plans	<p>Translate and implement general plan policies at the neighborhood level.</p> <p>Ensure investments in development areas do not perpetuate vulnerabilities.</p> <p>Incorporate resilience strategies into specific design features, plans, and guidelines (e.g., green infrastructure).</p>	<p>Reduce infrastructure and community vulnerability to hazards.</p> <p>Locally focused; reflect community-specific shocks, stressors, and priorities/solutions.</p>	<p>Limited funding available beyond developer impact fees.</p> <p>Potentially long update cycle.</p>
Agency Budget	<p>Fund resilience-related programs, projects, policies, and staff.</p> <p>Create dedicated resilience funds.</p> <p>Build resilience into decision making and life-cycle processes.</p>	<p>Requires justification and thorough outlining of resilience projects, which increases transparency and provides a clear path for implementation.</p> <p>Updated annually.</p> <p>Enables implementation.</p>	<p>Limited financial resources and competing priorities.</p> <p>May require policy or procedural changes to budget rules.</p>
Capital Improvement Plan (CIP)	<p>Fund specific resilience-related projects or incorporate resilience elements into existing planned projects.</p> <p>Embed resilience objectives into the overall goals of the CIP.</p> <p>Leverage funding opportunities for resilient infrastructure.</p>	<p>Ensures infrastructure investments are resilient.</p> <p>Updated annually, providing opportunity to prioritize new projects on a yearly basis.</p>	<p>May require data, tools, and technical expertise.</p> <p>Regulatory or policy barriers that hinder the integration of resilience measures.</p> <p>Limited funding resources and competing priorities.</p>

What can Local Jurisdictions do with this Toolkit?

No city or county is resilient alone - resilience is a shared, regional effort.

Strength in Regional Coordination

Disasters cross jurisdictional boundaries - air, water, infrastructure, housing markets are all regional systems.



Building a Resilient Future, Together

Resilience planning is ongoing and iterative - this Toolkit is a starting point, not an endpoint.

SCAG as a Partner & Resource

SCAG offers technical support, data, and funding alignment to help local governments advance resilience.



THANK YOU + QUESTIONS

For questions, please contact:

Sebastian Shetty, Associate Regional Planner
shetty@scag.ca.gov



Water Resolution White Paper: Regional Findings

April 16, 2026

WWW.SCAG.CA.GOV

Agenda

- 1 Project Context**
- 2 Water Resilience Challenges and Opportunities**
- 3 Data Gaps and Challenges**
- 4 Conclusion & Next Steps**



PROJECT CONTEXT

Regional Context

- By 2050, projections indicate that there will be 850,000 new households in the SCAG region (as compared to 2024). The region is also anticipating major growth in water-intensive industries.
- Water agencies are grappling with issues related to water reliability, quality, affordability, accessibility, and resilience and need funding to address them.
- To keep pace with growth projections and address these challenges, housing agencies, land use planners, and water managers will need to coordinate.

Project Components

Stakeholder Interviews

- 17 interviews (22 stakeholders)
- Interviewees represented a state agency, a groundwater management agency, water districts, a regional conservation district, flood control districts, and community based-organizations (CBOs)
- Focused on major water management challenges and promising strategies to address them

Water Data Landscape Analysis

- Included desktop research, geospatial analysis, and stakeholder interviews
- Reviewed availability, quality, and consistency of water management data
- Focused analysis on water equity indicators: reliable, clean and safe, affordable, accessible, and resilient

Network Mapping

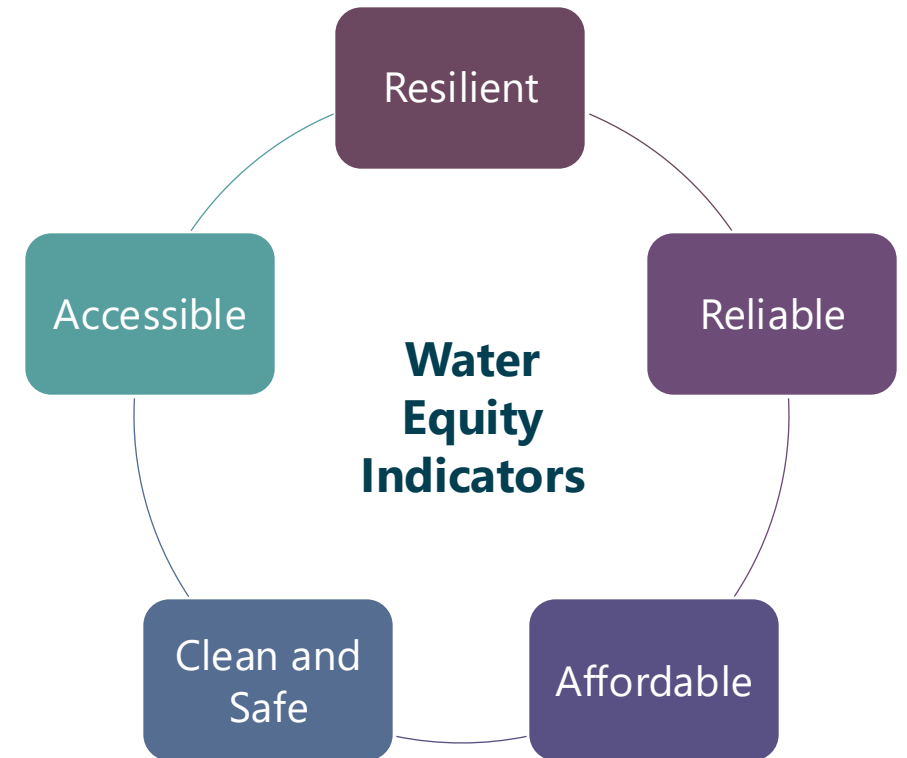
- Mapped key actors involved in water management in each county:
 - Federal, state, and local regulatory bodies
 - Public, private, and mutual water companies, including wholesalers and retailers
- Mapped each entity's function and contractual/regulatory relationships



REGIONAL WATER RESILIENCE CHALLENGES AND OPPORTUNITIES

Five Indicators for Water Equity

- **Reliable** – the number of water sources and the reliability of each source.
- **Clean and Safe** – the quality of water for purposes such as human consumption, cooking, and sanitation.
- **Affordable** – the portion of household median income allocated to paying for water.
- **Accessible** – the presence and condition of water conveyance infrastructure.
- **Resilient** – the ability for a community or water source to “bounce back” from climate change impacts like droughts, floods, and sea level rise.



Regional Themes: **Reliable**

Takeaways

- **Projected increased demand** from industrial, commercial, and residential growth may strain limited water supplies.
- Pressure to **diversify water supplies** to respond to climate change and to meet demand.
- Extreme wet and dry periods due to climate change amplify the **need for more water storage**.

Promising Strategies

Coordinated efforts
between public
agencies

Local water supply
diversification projects

Native water
management practices

Sustainable
groundwater
management

Regional Themes: **Clean and Safe**

Takeaways

- **Aging infrastructure** can impact water quality at the tap.
- **Industrial and agricultural runoff** can contaminate groundwater and surface water sources.
- **Coordination between planning agencies and water managers** is critical to manage the impacts of runoff on local watersheds and communities.
- Areas not covered by a water district typically rely on **private wells that have unknown water quality conditions**.

Promising Strategies

Nature-based solutions for improved watershed health

Community-led education and research initiatives

Regional Themes: **Affordable**

Takeaways

- Some water districts are increasing rates to meet the **rising costs of water management**.
- Low-income communities across the region **struggle to afford these rate increases**.

Promising Strategies

Water rate structures that promote water conservation and affordability

Regional Themes: **Accessible**

Takeaways

- **More funding is needed** to cover the costs of necessary infrastructure upgrades.
- **New infrastructure to provide reliable water access** is needed in some rural parts of the region.

Promising Strategies

Cross-sector
infrastructure
planning

Regional Themes: **Resilient**

Takeaways

- **More investment is needed in adaptive and resilient solutions** to climate and natural hazards, such as earthquakes.
- **Drought, sea level rise, extreme flooding, wildfires, and earthquakes** are all threats to water resiliency in the SCAG region.

Promising Strategies

Resilience and
emergency planning



REGIONAL DATA GAPS AND CHALLENGES

Data Gaps/Tools: **Reliable**

Takeaways

- May be a **gap between how water demand and population projections** are calculated.
- No region-wide summary of the **number and type of water supplies** each water purveyor uses exists.
- Limited data on **groundwater levels** for basins outside of the Sustainable Groundwater Management Act (SGMA) requirements.

Key Datasets/Tools

Department of Water
Resources (DWR)
State Water Project
Delivery Capability
Report

DWR Agricultural
Land & Water Use
Estimates

Urban Water
Management Plans

CalMatters 2025
California Water
Tracker

Groundwater
Sustainability Plans

Data Gaps/Challenges: **Clean and Safe**

Takeaways

- Limited public data on **risks of lead pipes** for residential water distribution.
- Limited data on water quality for **small water systems and domestic wells**
- Limited data on **emerging contaminants** (e.g., PFAS), but is expected to increase.
- Data on **groundwater quality** may be inconsistent, outdated, and inaccessible.
- No data on the **frequency or locations of the delivery of hauled or bottled water due to poor quality of tap water.**

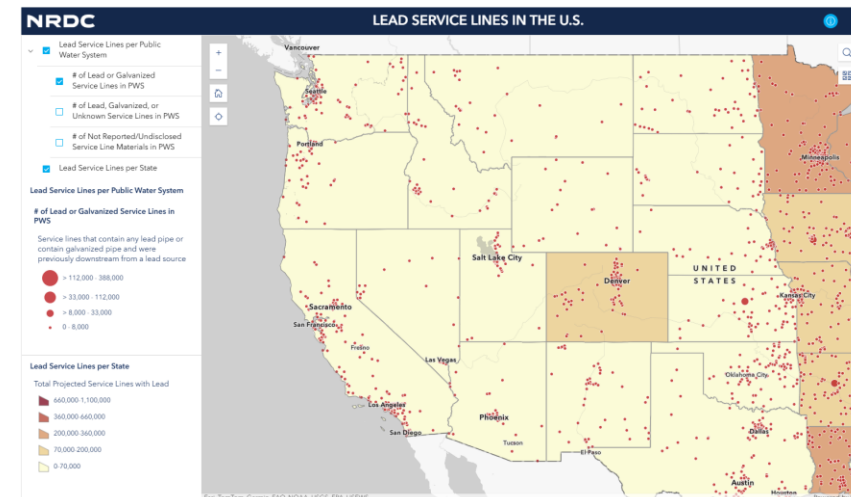
Key Datasets/Tools

SWRCB Safe and Affordable Funding for Equity and Resilience (SAFER) Program Dashboard

SWRCB Risk Assessment Dashboard
Small Water Systems
Domestic Wells

SWRCB's GeoTracker

NRDC/EPA Lead Pipe Interactive Map



Data Gaps/Challenges: **Affordable**

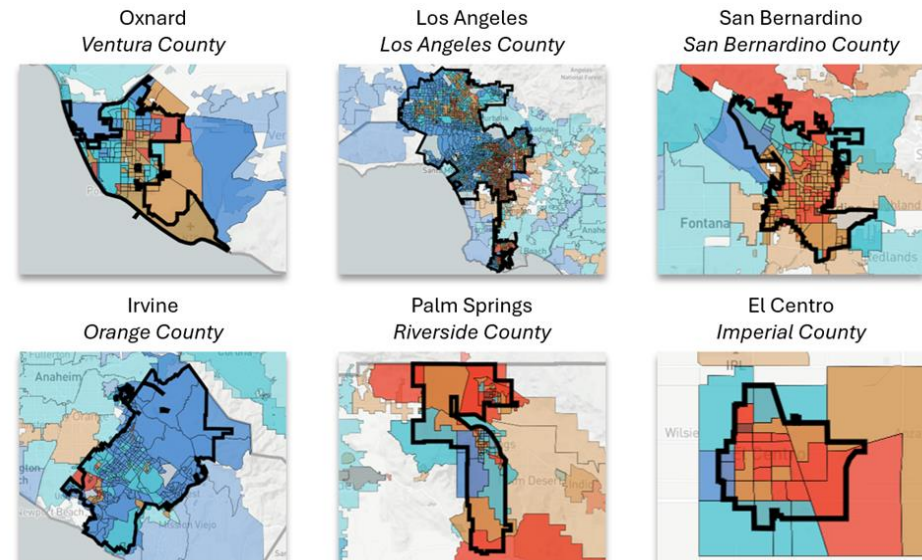
Takeaways

- **Costs of hauled or bottled water** for small and/or rural communities is unknown.
- Data on **costs for operation, maintenance, and repair of private wells** is not reported.
- Limited data on **agricultural water rates and their affordability**.
- Limited data on the **economic costs and benefits of agricultural water conservation**.

Key Datasets/Tools

Duke Nicholas Institute
Water Affordability
Dashboard

SWRCB SAFER Drinking
Water Needs Assessment
– Affordability
Assessment



Data Gaps/Challenges: **Accessible**

Takeaways

- Data gaps on the **location and condition of water conveyance infrastructure** throughout the region.
- **Not all agencies have water master plans** documenting age, material, and condition of conveyance infrastructure.
- No public data on **historical water main breaks** or gaps in service.

Key Datasets/Tools

Local Water Master Plans



Data Gaps/Challenges: **Resilient**

Takeaways

- No known comprehensive dataset **compares or overlays water infrastructure data with climate hazard datasets** (i.e., data on sea level rise, flooding, wildfire risks).
- Jurisdictions need **support with applying climate models** to their local planning context.

Key Datasets/Tools

Local Water Shortage
Contingency Plans

Local Hazard
Mitigation Plans

Sea Level Rise
Interactive Maps

Wildfire Risk Maps

FEMA Flood Maps

Cal-Adapt



CONCLUSION AND NEXT STEPS

Key Conclusions

- **More coordination is needed between planning agencies and water managers** to align land use and development planning with water management considerations.
- **More infrastructure funding is needed** to address aging water conveyance and flood control infrastructure, improve the region's resilience to climate change, and support growth.
- While watersheds span county, city, and water district boundaries, **many water management-related datasets are not available or consistent** across the region.
- Member agencies and water districts could use **support with utilizing state or regional datasets** to promote more accurate water supply and demand projections.

Next Steps

- SCAG will use the findings from this phase to identify strategies to support its member jurisdictions with advancing sustainable infrastructure needs in the region.
- SCAG is launching a Clean and Resilient Utility Infrastructure Study (CRUIS) to develop a Utility Infrastructure Strategic Plan to support new housing, jobs, clean energy, and resilience against extreme weather.

Contact SCAG with any questions or comments:

Kim Clark,
Sustainable & Resilient
Development Dept,
Clark@scag.ca.gov