

FTIP ID# (required) LA0G1451					
TCWG Consideration Date May 26, 2026					
Project Description (clearly describe project)					
<p>The proposed project consists of replacing the southbound I-605 on-ramp and off-ramp with a new configuration, including a direct on-ramp and off-ramp that merge directly on to the I-605 mainline, ramp metering on the new on-ramp, replacement of overhead signs, and construction of retaining walls adjacent to the new on-ramp and off-ramp. The project provides a new signalized intersection, allowing for access to both east and westbound directions of Beverly Boulevard. The proposed project requires no permanent ROW acquisitions, but it requires temporary construction easements and a maintenance easement.</p> <p>The interchange reconfiguration project was previously presented to the TCWG under RTP ID 1163S003 and concurred upon as not of air quality concern in the June 2018 TCWG meeting. The previous determination may be found at https://scag.ca.gov/project-level-conformity, and the meeting minutes may be found at https://scag.ca.gov/sites/default/files/2024-05/tcwg062618min.pdf. Since then, the interchange reconfiguration project was merged with another project to install overhead signs and construct retaining walls, which extended the project limits, and is now in design phase with only one revised build alternative.</p>					
Type of Project (use Table 1 on instruction sheet) Interchange Reconfiguration Project					
County Los Angeles	Narrative Location/Route & Postmiles I-605-R14.0/R17.2 Caltrans Projects – EA# 3414U				
Lead Agency: Caltrans					
Contact Person Andrew Yoon	Phone# 213.266.6892	Fax#	Email andrew.yoon@dot.ca.gov		
Hot Spot Pollutant of Concern (check one or both) PM2.5 X PM10 X					
Federal Action for which Project-Level PM Conformity is Needed (check appropriate box)					
X	Categorical Exclusion (NEPA)	EA or Draft EIS	FONSI or Final EIS	PS&E or Construction	Other
Scheduled Date of Federal Action: July 2026					
NEPA Assignment – Project Type (check appropriate box)					
Exempt		Section 326 –Categorical Exemption	X	Section 327 – Non-Categorical Exemption	
Current Programming Dates (as appropriate)					
	PE/Environmental	ENG	ROW	CON	
Start	Oct 2018	March 2020	Nov 2020	Mar 2027	
End	July 2019	July 2026	Aug 2022	Aug 2029	

Project Purpose and Need (Summary): *(attach additional sheets as necessary)*

The purpose of the Southbound Interstate 605 (I-605) Beverly Boulevard Interchange Improvement Project (project) includes the following: reduce congestion; reduce weaving conflicts; improve safety; improve freeway operations; provide for all directional movements at the southbound interchange; and ease congestion at intersections near the interchange. The SR-91/ I-605 / I-405 Congestion Hot Spots Feasibility Report and Project Study Report – Project Development Support, approved July 2014, (PSR-PDS) for the I-605, I-5, and I-105 identified the southbound I-605 at Beverly Boulevard interchange as a congestion hot-spot due to the short weaving distance between the loop on and off-ramps. This results in decreased safety with a higher than average accident rate and contributes to congestion on the mainline freeway in the southbound direction. Additionally, the southbound interchange does not provide for southbound to westbound movement, and surrounding intersections sometimes experience congestion as a result of congestion on the ramp.

Surrounding Land Use/Traffic Generators *(especially effect on diesel traffic)*

The proposed project locations are adjacent to pockets of mixture of residential and commercial land use.

Opening Year: Build and No Build LOS, AADT, % and # trucks, truck AADT of proposed facility

Location	2020 Existing		2030 Opening Year	
	ADT	Truck ADT	ADT	Truck ADT
SB Off-Ramp	6012	114	9646	142
SB On-Ramp	7958	98	8144	124
Beverly BI	37820	350	38370	346

RTP Horizon Year / Design Year: Build and No Build LOS, AADT, % and # trucks, truck AADT of proposed facility

Location	2020 Existing		2050 Horizon Year	
	ADT	Truck ADT	ADT	Truck ADT
SB Off-Ramp	6012	114	9676	218
SB On-Ramp	7958	98	8530	198
Beverly BI	37820	350	37355	337

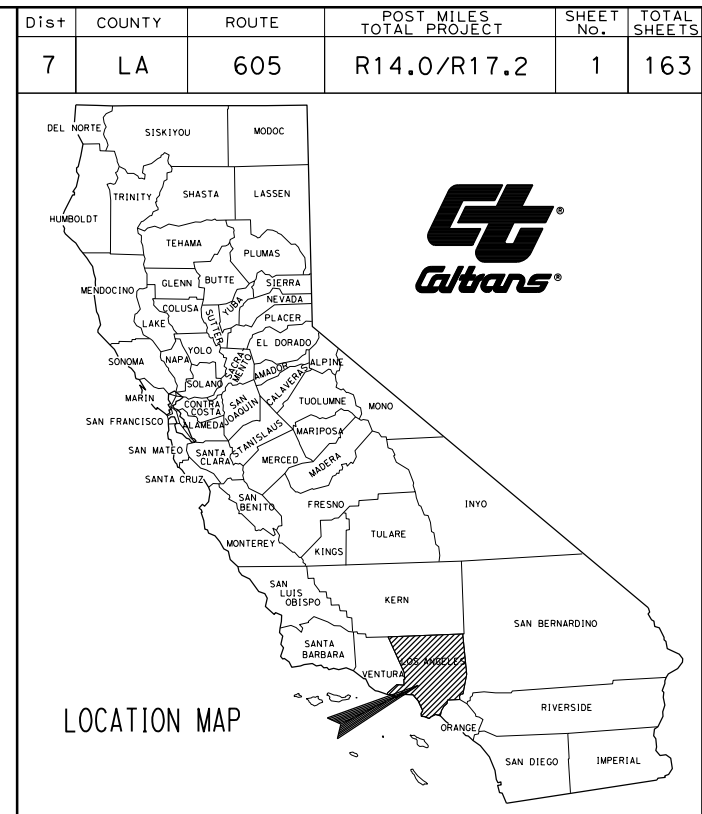
<p>Opening Year: If facility is an interchange(s) or intersection(s), Build and No Build cross-street AADT, % and # trucks, truck AADT</p> <p>See above for traffic data on the cross street, Beverly Bl.</p> <p>RTP Horizon Year / Design Year: If facility is an interchange (s) or intersection(s), Build and No Build cross-street AADT, % and # trucks, truck AADT</p> <p>See above for traffic data on the cross street, Beverly Bl.</p>
<p>Describe potential traffic redistribution effects of congestion relief <i>(impact on other facilities)</i></p> <p>The proposed project improvements are anticipated to result in reducing delays and congestion at intersections near the Beverly Blvd ramps. By reconfiguring the ramps at I-605 and Beverly Blvd, the project provides for all movements at the southbound interchange and improves the freeway-mainline operations, hence improves the LOS in the future.</p>
<p>Comments/Explanation/Details <i>(attach additional sheets as necessary)</i></p> <p>As documented in the tables above, the proposed project is not anticipated to result in any significant increase in truck volumes; and is therefore considered not to be of air quality concern for particulate matters (PM2.5 and PM10).</p>

**STATE OF CALIFORNIA
DEPARTMENT OF TRANSPORTATION**

**PROJECT PLANS FOR CONSTRUCTION ON
STATE HIGHWAY**

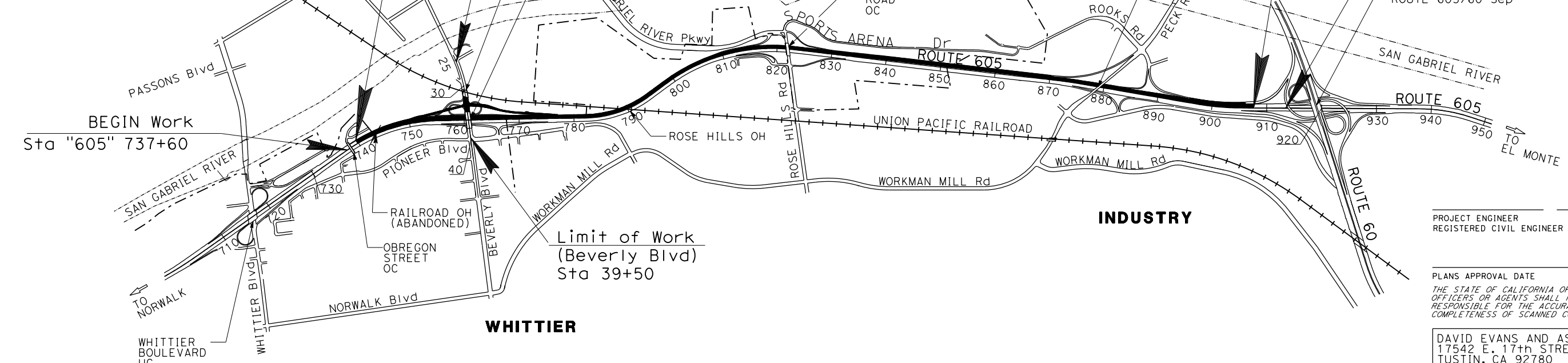
**IN LOS ANGELES COUNTY
IN PICO RIVERA
FROM 0.4 MILE NORTH OF WHITTIER BOULEVARD UNDERCROSSING
TO 0.2 MILE SOUTH OF ROUTE 60**

TO BE SUPPLEMENTED BY STANDARD PLANS DATED 2025



SHEET No.	INDEX OF PLANS
1	DESCRIPTION
2-7	TITLE AND LOCATION MAP
8	TYPICAL CROSS SECTIONS
9-11	PROJECT CONTROL
12-17	LAYOUTS
18-38	PROFILE AND SUPERELEVATION DIAGRAM
39-48	CONSTRUCTION DETAILS
49-51	DRAINAGE PLAN, PROFILE, DETAILS, AND QUANTITIES
52	UTILITY PLAN
53-57	CONSTRUCTION AREA SIGNS
58-73	MOTORIST INFORMATION PLAN (DETOUR)
74-76	STAGE CONSTRUCTION AND TRAFFIC HANDLING PLAN
77-84	STAGE CONSTRUCTION QUANTITIES
85-88	TRAFFIC HANDLING DETAILS
89-91	PAVEMENT DELINEATION
92-97	PAVEMENT DELINEATION QUANTITIES
98-103	SIGN PLAN
104-106	SIGN DETAILS
107-108	SIGN QUANTITIES
109-110	SUMMARY OF QUANTITIES
111-112	RETAINING WALL No.52 PLAN AND DETAILS
113	RETAINING WALL No.52 LOG OF TEST BORINGS
114	RETAINING WALL No.62 PLAN
115-118	RETAINING WALL No.62 LOG OF TEST BORINGS
119	SOUND WALL PLAN (SW No.75)
120	SOUND WALL No.75 LOG OF TEST BORINGS
121-123	IRRIGATION SPRINKLER SCHEDULE
124	IRRIGATION PLAN
125	IRRIGATION DETAIL
126	IRRIGATION QUANTITIES
127-129	PLANT LEGEND
130	PLANTING PLAN
131	PLANTING DETAILS
132-163	PLANTING QUANTITIES
	ELECTRICAL PLANS

THE STANDARD PLANS LIST APPLICABLE TO THIS CONTRACT IS INCLUDED IN THE NOTICE TO BIDDERS AND SPECIAL PROVISIONS BOOK.



END CONSTRUCTION
Sta "605" 907+60
PM R17.2

END Work
Sta "605" 913+50

PROJECT ENGINEER DATE
REGISTERED CIVIL ENGINEER

PLANS APPROVAL DATE
THE STATE OF CALIFORNIA OR ITS OFFICERS OR AGENTS SHALL NOT BE RESPONSIBLE FOR THE ACCURACY OR COMPLETENESS OF SCANNED COPIES OF THIS PLAN SHEET.



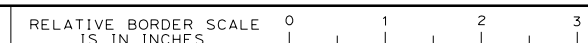
DAVID EVANS AND ASSOCIATES, INC.
17542 E. 17th STREET, SUITE 150
TUSTIN, CA 92780

LOS ANGELES METRO
ONE GATEWAY PLAZA
LOS ANGELES, CA 90012

CONTRACT No. **07-3414U1**
PROJECT ID **0717000189**

THE CONTRACTOR SHALL POSSESS THE CLASS (OR CLASSES) OF LICENSE AS SPECIFIED IN THE "NOTICE TO BIDDERS."

NO SCALE



USERNAME => laph
DGN FILE => ab001.dgn

UNIT 1795 PROJECT NUMBER & PHASE 07170001891

APPROVED AS TO IMPACT ON STATE FACILITIES AND CONFORMANCE WITH APPLICABLE STATE STANDARDS AND PRACTICES AND THAT TECHNICAL OVERSIGHT WAS PERFORMED.

DATE SIGNED

LICENSE Exp DATE 06/30/26

REGISTRATION No. 93609

CALTRANS DESIGN OVERSIGHT APPROVAL LOERA CARLOS

CONSULTANT DESIGN ENGINEER MARIE MARSTON

DATE PLOTTED => 08-JAN-2026
TIME PLOTTED => 13:16
LAST REVISION 00-00-00

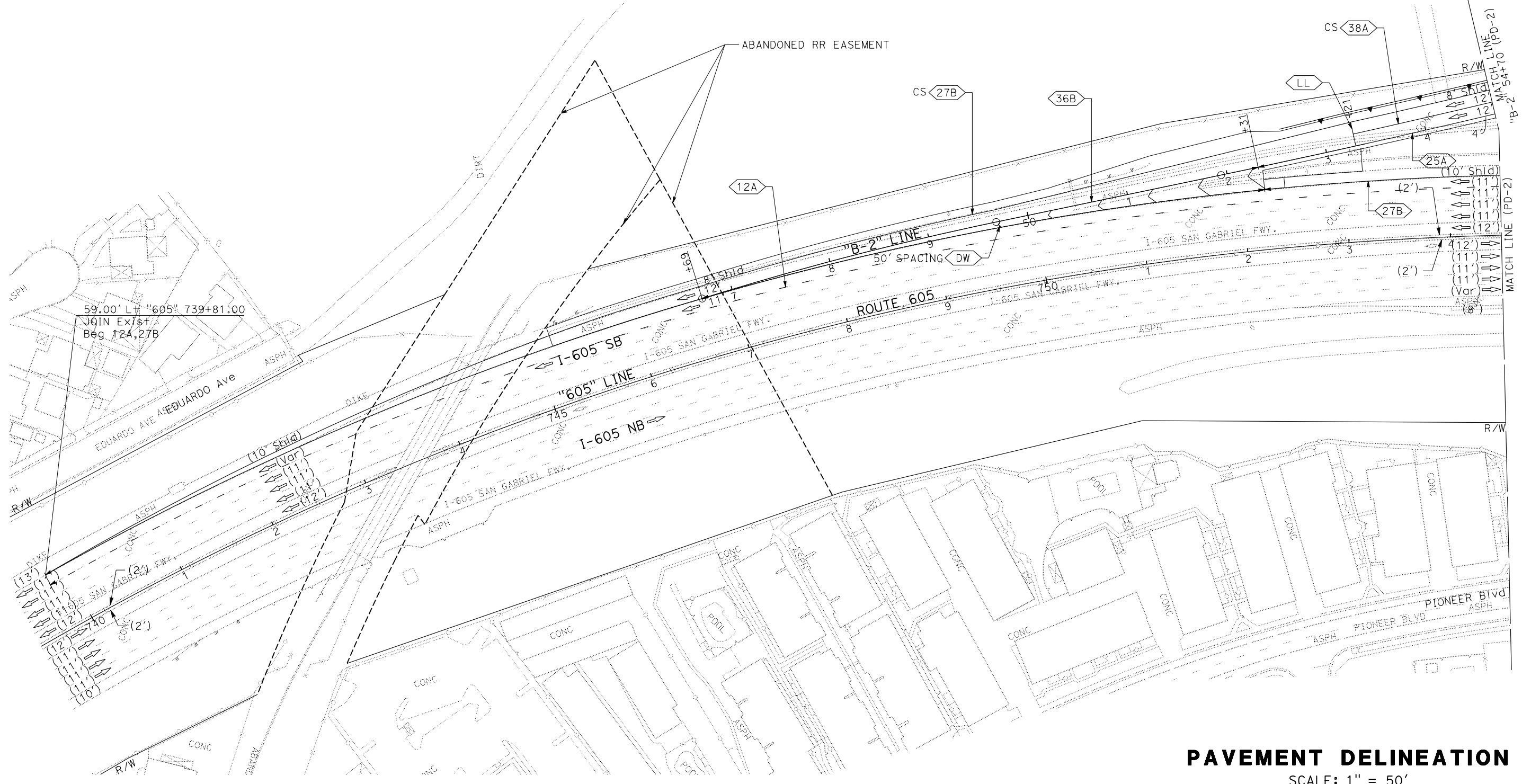
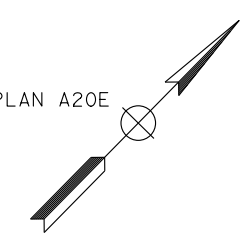
Dist	COUNTY	LOCATION CODE	POST MILES TOTAL PROJECT	SHEET No.	TOTAL SHEETS
07	LA	605	R14.0/R17.2	85	163

REGISTERED CIVIL ENGINEER	DATE	1/15/26
SHAHRAM VAHDAT	No.	47934
	Exp.	12/31/27
	CIVIL	

PLANS APPROVAL DATE	
THE STATE OF CALIFORNIA OR ITS OFFICERS OR AGENTS SHALL NOT BE RESPONSIBLE FOR THE ACCURACY OR COMPLETENESS OF SCANNED COPIES OF THIS PLAN SHEET.	
HNTB CORPORATION 777 S FIGUEROA St, Ste 2300 LOS ANGELES, CA 90017	METRO ONE GATEWAY PLAZA LOS ANGELES, CA 90012

- NOTES:**
- FOR ACCURATE RIGHT OF WAY DATA, CONTACT RIGHT OF WAY ENGINEERING AT THE DISTRICT OFFICE.
 - REMOVE ALL CONFLICTING TRAFFIC STRIPES, PAVEMENT MARKINGS, AND PAVEMENT MARKERS.
 - PLACE ARROWS 8' BEFORE LIMIT LINE OR CROSSWALK.

- LEGEND:**
- ← BEGIN/END OF TRAFFIC STRIPE DETAIL
 - ↔ CHANGE OF TRAFFIC STRIPE DETAIL
 - No. TRAFFIC STRIPE DETAIL NUMBER
 - PM PAVEMENT MARKING
 - LL 12" WHITE LIMIT LINE
 - LC LADDER CROSSWALK
 - A 6" WHITE LINE
 - DY 12" DIAGONAL YELLOW LINE
 - DW 18" CHEVRON WHITE LINE
 - NB "NB" PAVEMENT MARKING
 - SB "SB" PAVEMENT MARKING
 - CS CONTRAST STRIPE PAINT (2-COAT), PER CT S+d PLAN A20E
 - DIRECTION OF TRAVEL
 - (XX') EXISTING LANE WIDTH
 - XX' NEW LANE WIDTH



STATE OF CALIFORNIA - DEPARTMENT OF TRANSPORTATION	FUNCTIONAL SUPERVISOR	CALCULATED/DESIGNED BY	REVISOR
Shahram Vahdat	Shahram Vahdat	Christina Villela	Christina Villela
	Checked by	Tevodros Mekuria	Tevodros Mekuria

PAVEMENT DELINEATION
SCALE: 1" = 50'
PD-1

APPROVED FOR PAVEMENT DELINEATION WORK ONLY

LAST REVISION DATE PLOTTED => 08-JAN-2026 00-00-00 TIME PLOTTED => 11:08

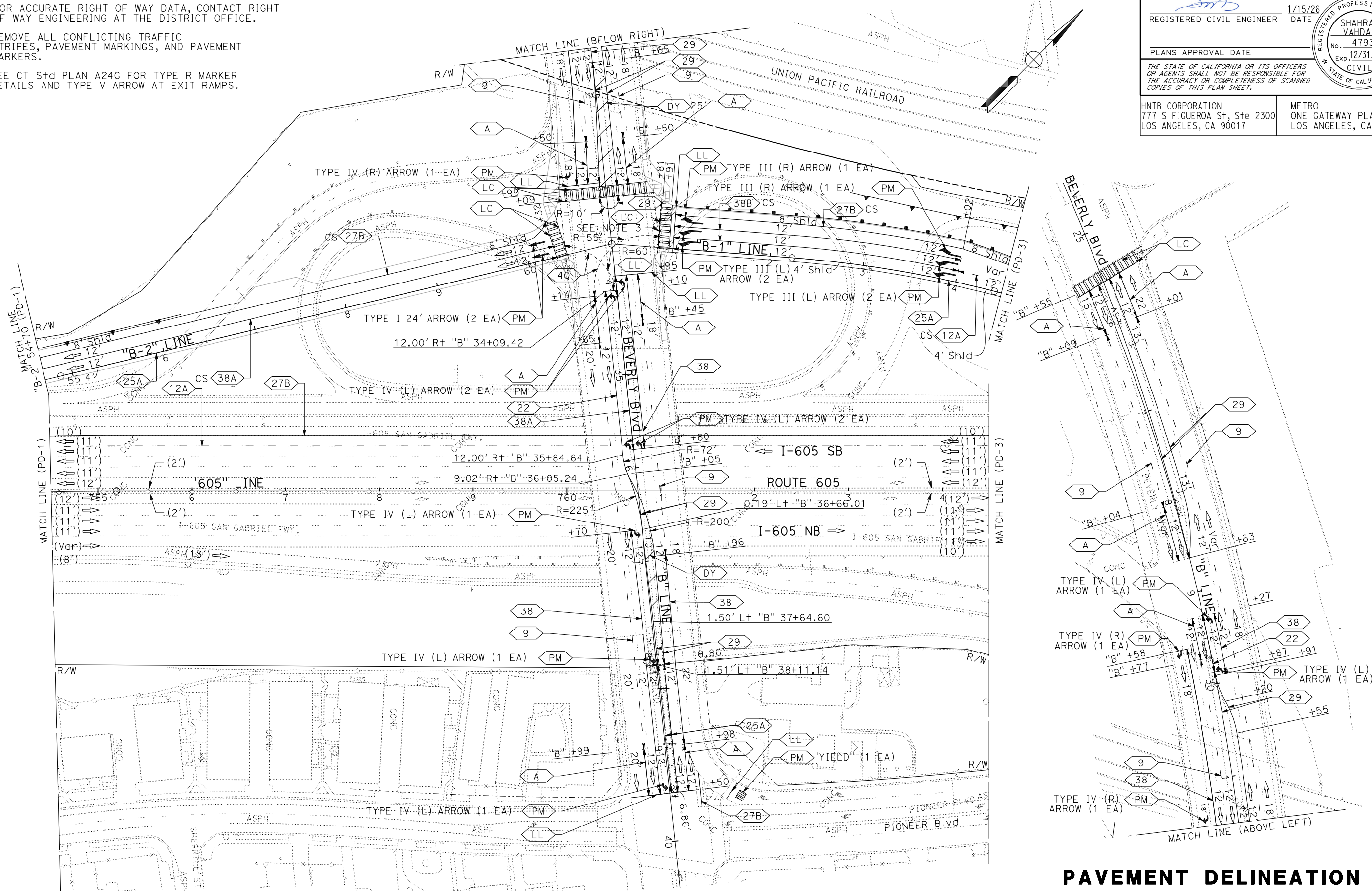
NOTES:

- FOR ACCURATE RIGHT OF WAY DATA, CONTACT RIGHT OF WAY ENGINEERING AT THE DISTRICT OFFICE.
- REMOVE ALL CONFLICTING TRAFFIC STRIPES, PAVEMENT MARKINGS, AND PAVEMENT MARKERS.
- SEE CT S+D PLAN A24G FOR TYPE R MARKER DETAILS AND TYPE V ARROW AT EXIT RAMP.

Dist	COUNTY	LOCATION CODE	POST MILES TOTAL PROJECT	SHEET No.	TOTAL SHEETS
07	LA	605	R14.0/R17.2	86	163

REGISTERED CIVIL ENGINEER DATE 1/15/26
 SHAHRAM VAHDAT No. 47934 Exp. 12/31/27
 PLANS APPROVAL DATE
 THE STATE OF CALIFORNIA OR ITS OFFICERS OR AGENTS SHALL NOT BE RESPONSIBLE FOR THE ACCURACY OR COMPLETENESS OF SCANNED COPIES OF THIS PLAN SHEET.

HNTB CORPORATION 777 S FIGUEROA St, Ste 2300 LOS ANGELES, CA 90017
 METRO ONE GATEWAY PLAZA LOS ANGELES, CA 90012



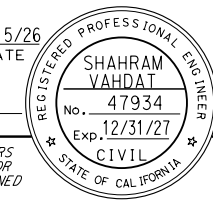
PAVEMENT DELINEATION
 SCALE: 1" = 50'
PD-2

STATE OF CALIFORNIA - DEPARTMENT OF TRANSPORTATION	FUNCTIONAL SUPERVISOR	CALCULATED/DESIGNED BY	REVISED BY
Caltrans	SHAHRAM VAHDAT	CHRISTINA VILLELA	CHRISTINA VILLELA
		TEWODROS MEKURIA	TEWODROS MEKURIA
		CHECKED BY	DATE REVISED

APPROVED FOR PAVEMENT DELINEATION WORK ONLY

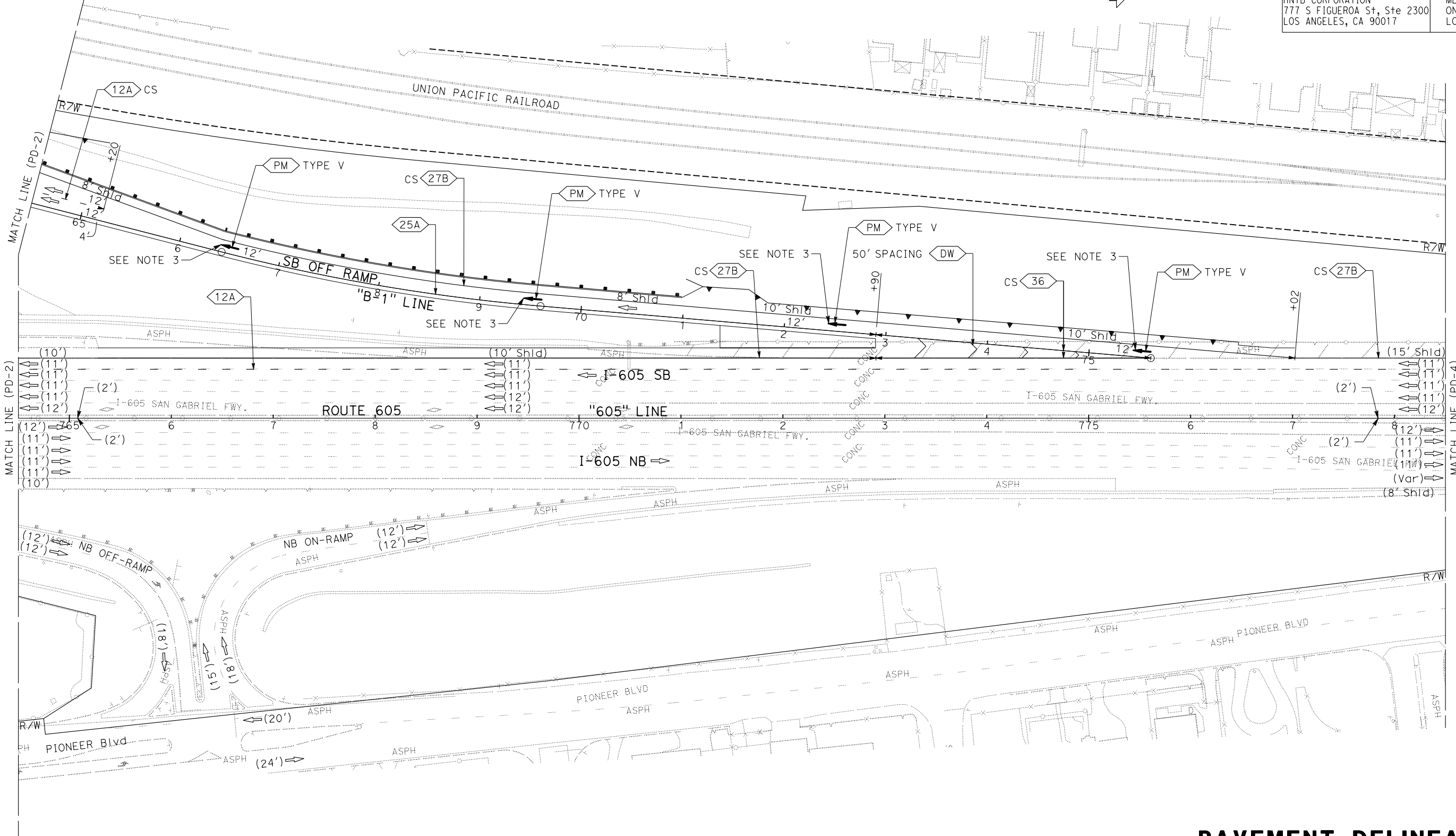
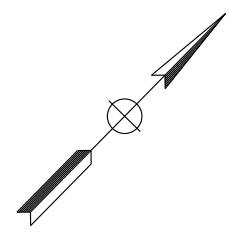
DATE PLOTTED => 08-JAN-2026 TIME PLOTTED => 11:08

Dist	COUNTY	LOCATION CODE	POST MILES TOTAL PROJECT	SHEET No.	TOTAL SHEETS
07	LA	605	R14.0/R17.2	87	163

REGISTERED CIVIL ENGINEER	DATE	1/15/26
		
PLANS APPROVAL DATE		
<small>THE STATE OF CALIFORNIA OR ITS OFFICERS OR AGENTS SHALL NOT BE RESPONSIBLE FOR THE ACCURACY OR COMPLETENESS OF SCANNED COPIES OF THIS PLAN SHEET.</small>		
HNTB CORPORATION 777 S FIGUEROA St, Ste 2300 LOS ANGELES, CA 90017		METRO ONE GATEWAY PLAZA LOS ANGELES, CA 90012

NOTES:

- FOR ACCURATE RIGHT OF WAY DATA, CONTACT RIGHT OF WAY ENGINEERING AT THE DISTRICT OFFICE.
- REMOVE ALL CONFLICTING TRAFFIC STRIPES, PAVEMENT MARKINGS, AND PAVEMENT MARKERS.
- SEE CT Std PLAN A24G FOR TYPE R MARKER DETAILS AND TYPE V ARROW AT EXIT RAMP DETAIL.



REVISOR	REVISION
CHRISTINA VILLELA	TEVODROS MEKURIA
DATE	REVISION

DESIGNER	CHECKER
SHAHRAM VAHDAT	
DATE	REVISION

FUNCTIONAL SUPERVISOR	

PAVEMENT DELINEATION
SCALE: 1" = 50'
PD-3

APPROVED FOR PAVEMENT DELINEATION WORK ONLY

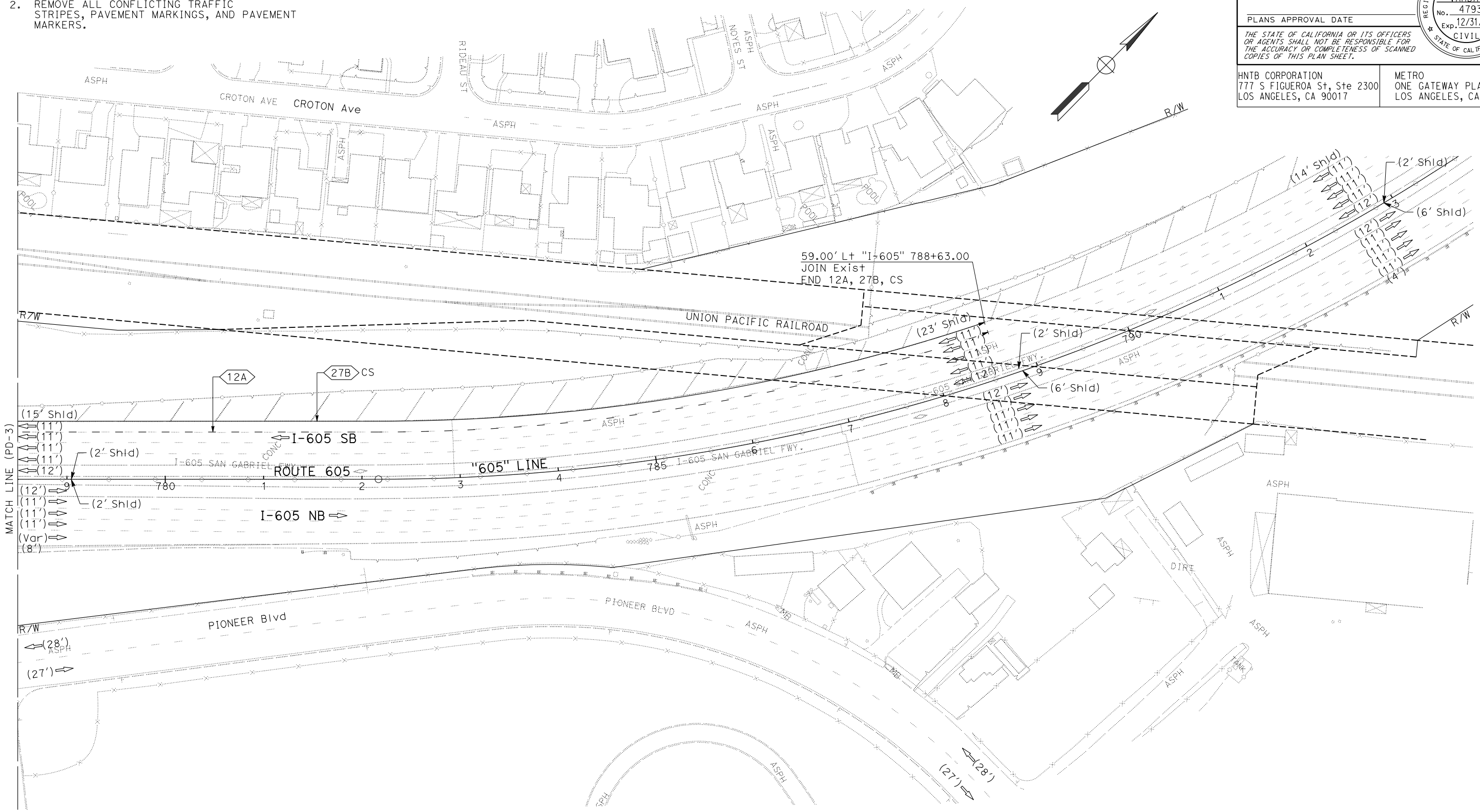
LAST REVISION DATE PLOTTED => 08-JAN-2026 00-00-00 TIME PLOTTED => 11:08

Dist	COUNTY	LOCATION CODE	POST MILES TOTAL PROJECT	SHEET No.	TOTAL SHEETS
07	LA	605	R14.0/R17.2	88	163

REGISTERED CIVIL ENGINEER	DATE	1/15/26
PLANS APPROVAL DATE		
<small>THE STATE OF CALIFORNIA OR ITS OFFICERS OR AGENTS SHALL NOT BE RESPONSIBLE FOR THE ACCURACY OR COMPLETENESS OF SCANNED COPIES OF THIS PLAN SHEET.</small>		
HNTB CORPORATION 777 S FIGUEROA St, Ste 2300 LOS ANGELES, CA 90017		METRO ONE GATEWAY PLAZA LOS ANGELES, CA 90012

NOTES:

- FOR ACCURATE RIGHT OF WAY DATA, CONTACT RIGHT OF WAY ENGINEERING AT THE DISTRICT OFFICE.
- REMOVE ALL CONFLICTING TRAFFIC STRIPES, PAVEMENT MARKINGS, AND PAVEMENT MARKERS.



STATE OF CALIFORNIA - DEPARTMENT OF TRANSPORTATION	FUNCTIONAL SUPERVISOR	CALCULATED/DESIGNED BY	REVISED BY
	SHAHRAM VAHDAT	CHRISTINA VILLELA	CHRISTINA VILLELA
		CHECKED BY	DATE REVISED
		TEVODROS MEKURIA	

PAVEMENT DELINEATION
SCALE: 1" = 50'
PD-4

APPROVED FOR PAVEMENT DELINEATION WORK ONLY

LAST REVISION DATE PLOTTED => 08-JAN-2026
00-00-00 TIME PLOTTED => 11:08

Dist	COUNTY	LOCATION CODE	POST MILES TOTAL PROJECT	SHEET No.	TOTAL SHEETS
07	LA	605	R14.0/R17.2	92	163

REGISTERED CIVIL ENGINEER	DATE	1/15/26
PLANS APPROVAL DATE		
<small>THE STATE OF CALIFORNIA OR ITS OFFICERS OR AGENTS SHALL NOT BE RESPONSIBLE FOR THE ACCURACY OR COMPLETENESS OF SCANNED COPIES OF THIS PLAN SHEET.</small>		
HNTB CORPORATION 777 S FIGUEROA St, Ste 2300 LOS ANGELES, CA 90017	METRO ONE GATEWAY PLAZA LOS ANGELES, CA 90012	

NOTES:

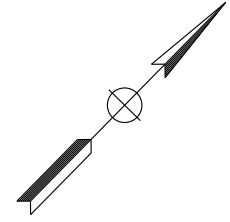
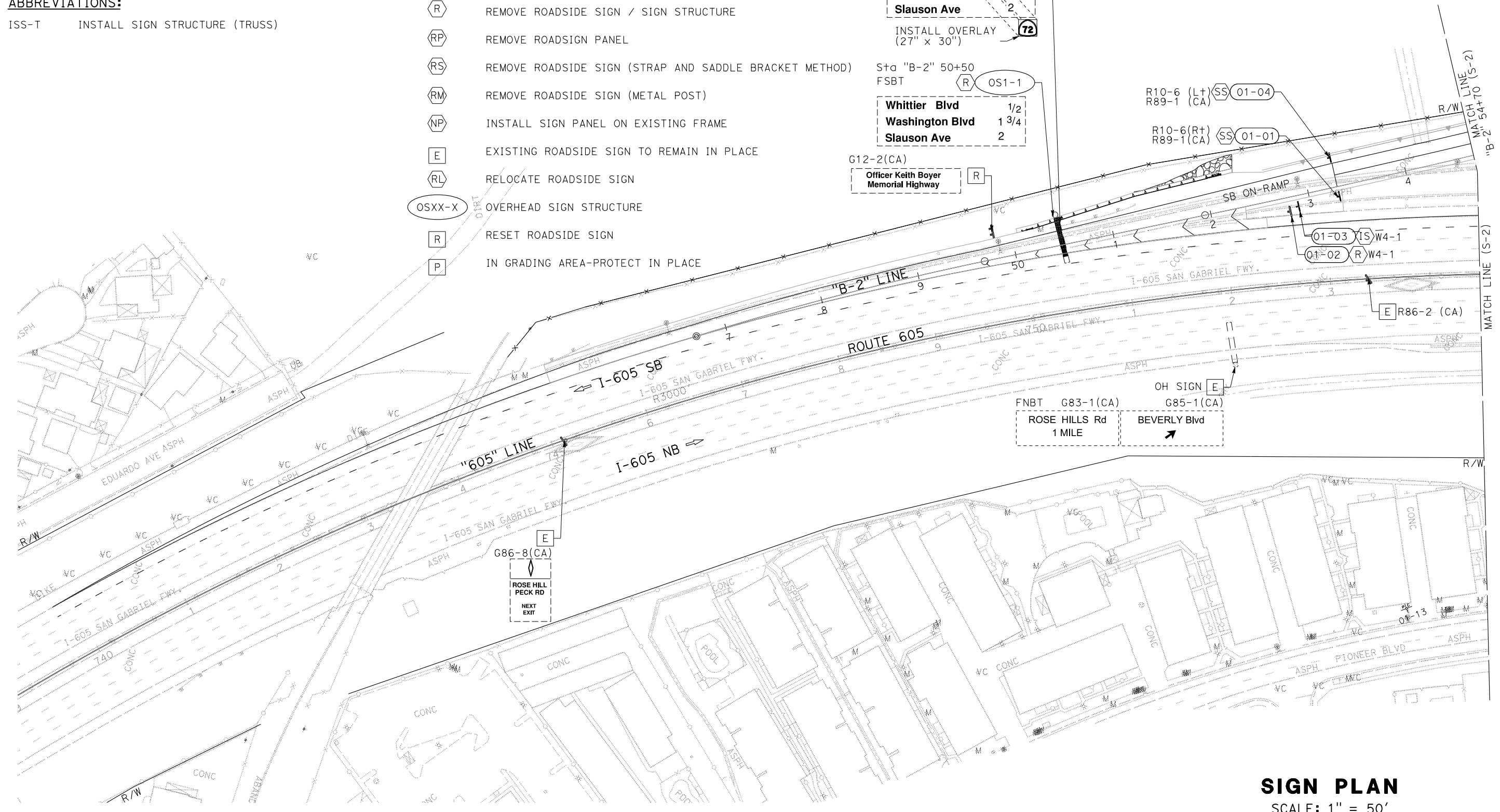
1. EXACT LOCATION AND POSITION OF ROADSIDE SIGN WILL BE DETERMINED BY THE ENGINEER.
2. FOR ACCURATE RIGHT OF WAY DATA, CONTACT RIGHT OF WAY ENGINEERING AT THE DISTRICT OFFICE.
3. USE TYPE XI (HIGH INTENSITY) RETROREFLECTIVE SHEETING FOR BACKGROUND, BORDERS AND LEGENDS FOR ALL SIGNS.

ABBREVIATIONS:

ISS-T INSTALL SIGN STRUCTURE (TRUSS)

LEGEND:

- (XX-XX) ROADSIDE SIGN (IDENTIFIED BY NUMBER)
- (IS) INSTALL ROADSIDE SIGN
- (SS) INSTALL SIGN (STRAP AND SADDLE BRACKET METHOD)
- (EA) INSTALL SIGN (EXPANSION ANCHOR METHOD)
- (MW) METAL (WALL MOUNTED SIGN)
- (R) REMOVE ROADSIDE SIGN / SIGN STRUCTURE
- (RP) REMOVE ROADSIGN PANEL
- (RS) REMOVE ROADSIDE SIGN (STRAP AND SADDLE BRACKET METHOD)
- (RM) REMOVE ROADSIDE SIGN (METAL POST)
- (NP) INSTALL SIGN PANEL ON EXISTING FRAME
- (E) EXISTING ROADSIDE SIGN TO REMAIN IN PLACE
- (RL) RELOCATE ROADSIDE SIGN
- (OSXX-X) OVERHEAD SIGN STRUCTURE
- (R) RESET ROADSIDE SIGN
- (P) IN GRADING AREA-PROTECT IN PLACE



STATE OF CALIFORNIA - DEPARTMENT OF TRANSPORTATION	FUNCTIONAL SUPERVISOR	REVISOR	DATE
	SHAHRAM VAHDAT	CHRISTINA VILLELA	TEWODROS MEKURIA
		CHECKED BY	DATE

APPROVED FOR SIGN WORK ONLY

SIGN PLAN
SCALE: 1" = 50'

S-1

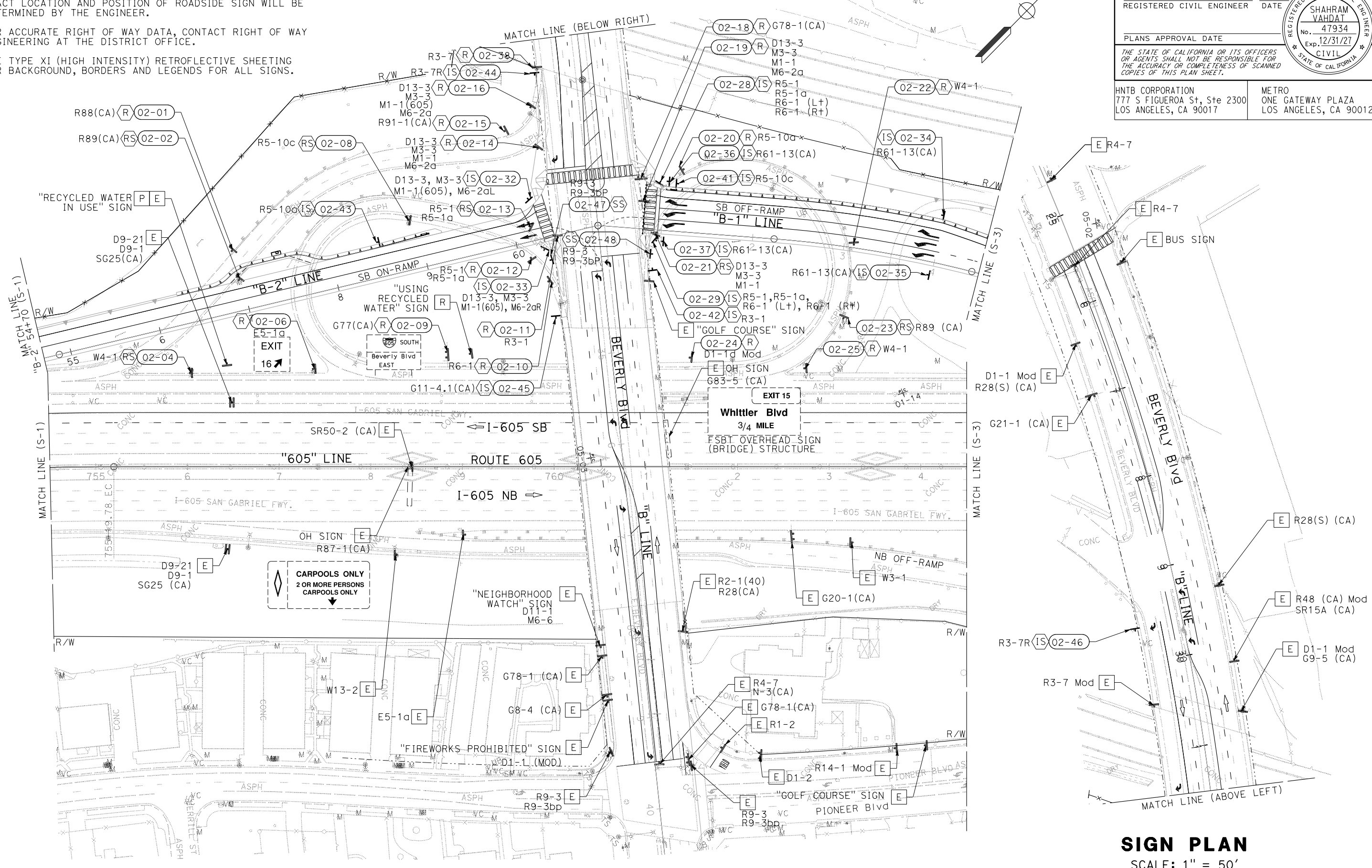
LAST REVISION DATE PLOTTED => 1/8/2026 00-00-00 TIME PLOTTED => 11:08:42 AM

NOTES:

1. EXACT LOCATION AND POSITION OF ROADSIDE SIGN WILL BE DETERMINED BY THE ENGINEER.
2. FOR ACCURATE RIGHT OF WAY DATA, CONTACT RIGHT OF WAY ENGINEERING AT THE DISTRICT OFFICE.
3. USE TYPE XI (HIGH INTENSITY) RETROREFLECTIVE SHEETING FOR BACKGROUND, BORDERS AND LEGENDS FOR ALL SIGNS.

Dist	COUNTY	LOCATION CODE	POST MILES TOTAL PROJECT	SHEET No.	TOTAL SHEETS
07	LA	605	R14.0/R17.2	93	163

REGISTERED CIVIL ENGINEER	DATE	1/15/26
PLANS APPROVAL DATE		
THE STATE OF CALIFORNIA OR ITS OFFICERS OR AGENTS SHALL NOT BE RESPONSIBLE FOR THE ACCURACY OR COMPLETENESS OF SCANNED COPIES OF THIS PLAN SHEET.		
HNTB CORPORATION 777 S FIGUEROA St, Ste 2300 LOS ANGELES, CA 90017	METRO ONE GATEWAY PLAZA LOS ANGELES, CA 90012	



SIGN PLAN
SCALE: 1" = 50'

STATE OF CALIFORNIA - DEPARTMENT OF TRANSPORTATION	FUNCTIONAL SUPERVISOR	CALCULATED/DESIGNED BY	REVISOR BY
Caltrans	SHAHRAM VAHDAT	CHRISTINA VILLELA	TEWODROS MEKURIA
		CHECKED BY	DATE REVISED

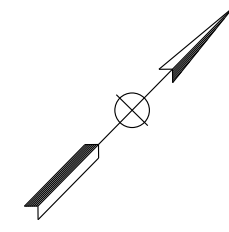
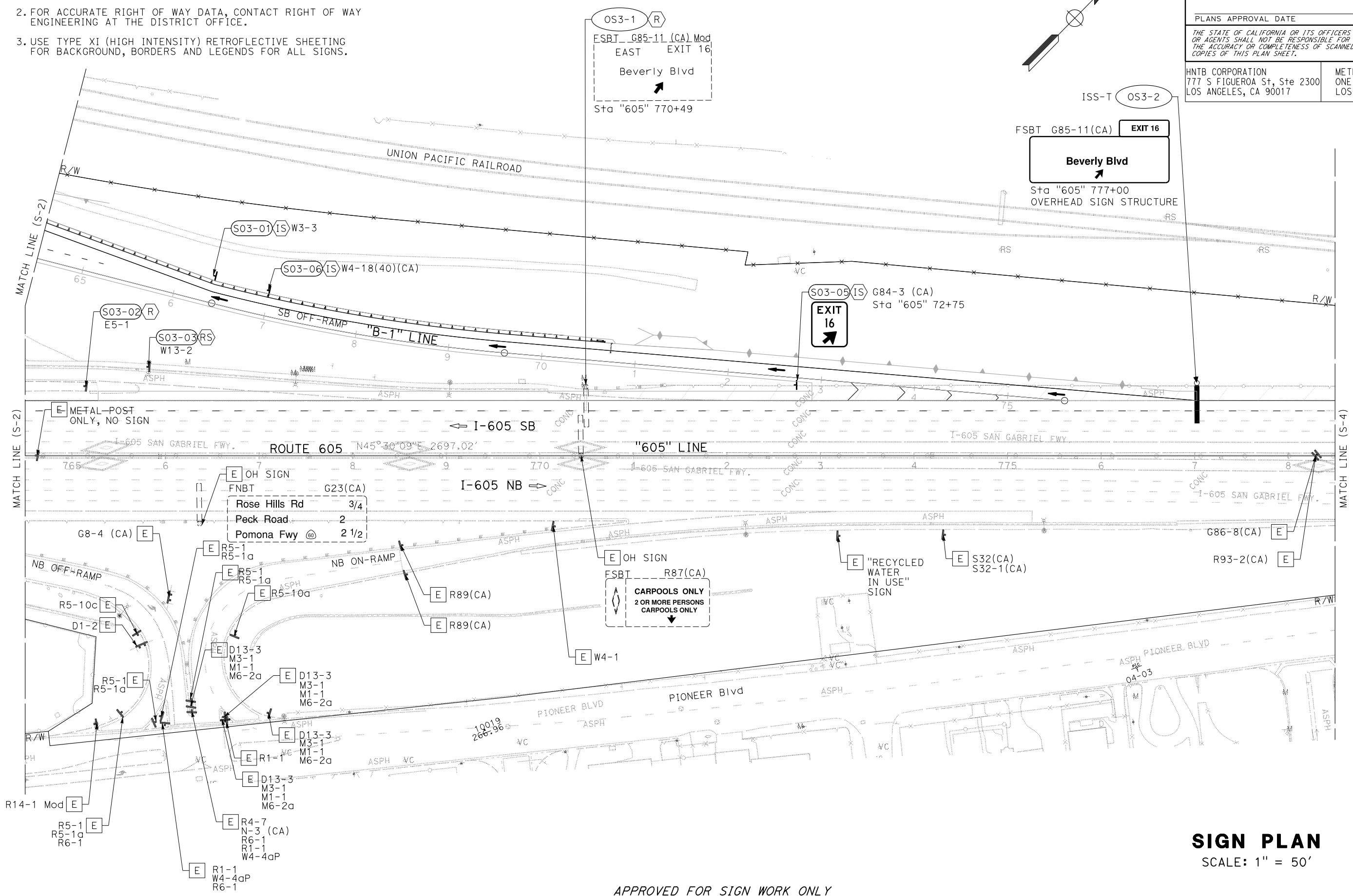
APPROVED FOR SIGN WORK ONLY

Dist	COUNTY	LOCATION CODE	POST MILES TOTAL PROJECT	SHEET No.	TOTAL SHEETS
07	LA	605	R14.0/R17.2	94	163

REGISTERED CIVIL ENGINEER	DATE	1/15/26
PLANS APPROVAL DATE		
<small>THE STATE OF CALIFORNIA OR ITS OFFICERS OR AGENTS SHALL NOT BE RESPONSIBLE FOR THE ACCURACY OR COMPLETENESS OF SCANNED COPIES OF THIS PLAN SHEET.</small>		
HNTB CORPORATION 777 S FIGUEROA St, Ste 2300 LOS ANGELES, CA 90017	METRO ONE GATEWAY PLAZA LOS ANGELES, CA 90012	

NOTES:

1. EXACT LOCATION AND POSITION OF ROADSIDE SIGN WILL BE DETERMINED BY THE ENGINEER.
2. FOR ACCURATE RIGHT OF WAY DATA, CONTACT RIGHT OF WAY ENGINEERING AT THE DISTRICT OFFICE.
3. USE TYPE XI (HIGH INTENSITY) RETROREFLECTIVE SHEETING FOR BACKGROUND, BORDERS AND LEGENDS FOR ALL SIGNS.



STATE OF CALIFORNIA - DEPARTMENT OF TRANSPORTATION

REVISOR
 CHRISTINA VILLELA
 TEODROS MEKURIA

DESIGNER
 SHAHRAM VAHDAT

CHECKED BY

FUNCTIONAL SUPERVISOR

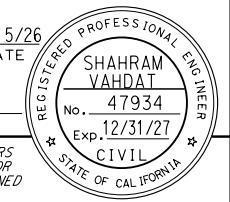
DATE REVISED
 7/2/2010

APPROVED FOR SIGN WORK ONLY

SIGN PLAN
 SCALE: 1" = 50'

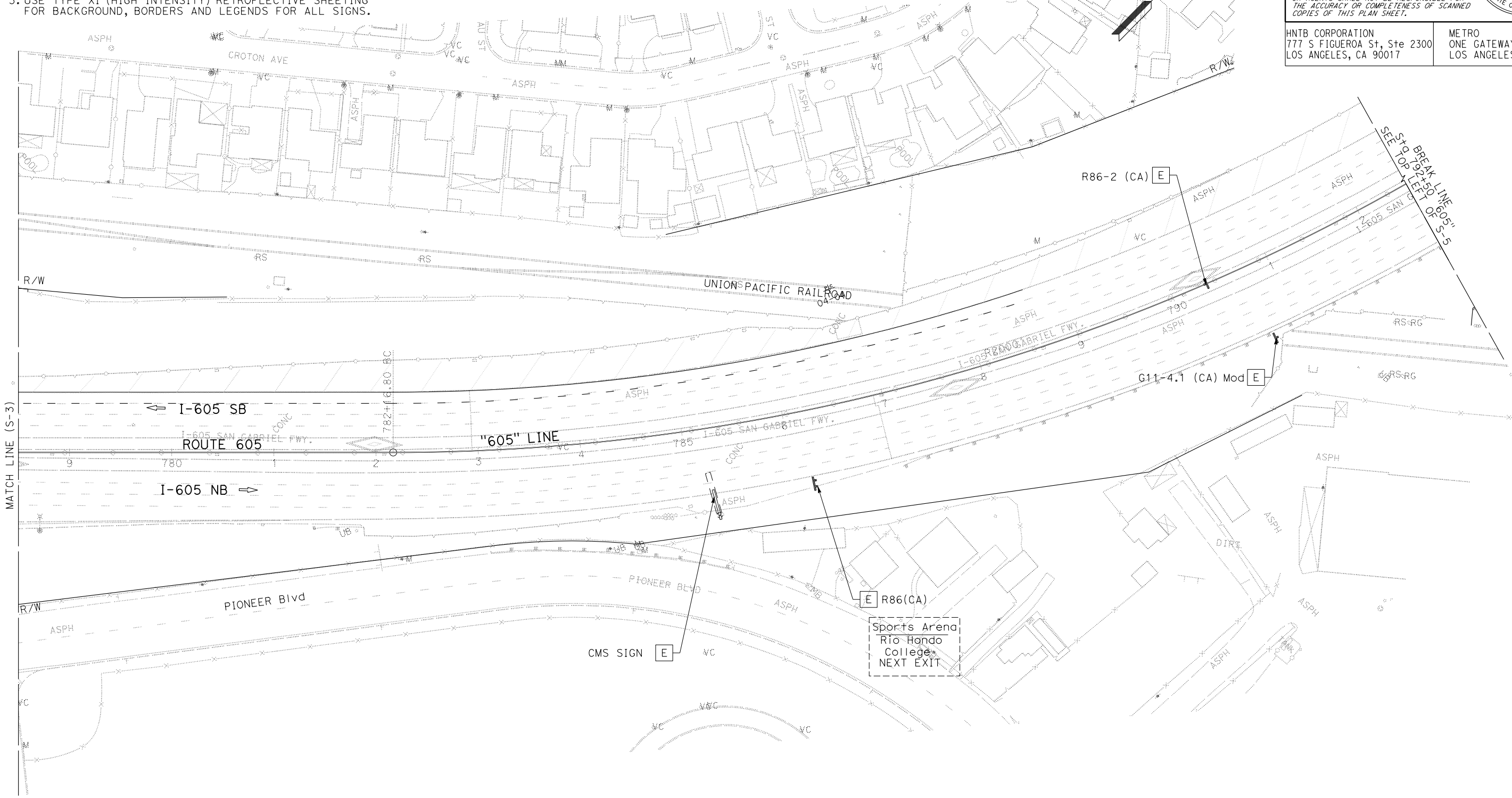
S-3

Dist	COUNTY	LOCATION CODE	POST MILES TOTAL PROJECT	SHEET No.	TOTAL SHEETS
07	LA	605	R14.0/R17.2	95	163
REGISTERED CIVIL ENGINEER			DATE	1/15/26	
SHAHRAM VAHDAT			No.	47934	
PLANS APPROVAL DATE			Exp.	12/31/27	
THE STATE OF CALIFORNIA OR ITS OFFICERS OR AGENTS SHALL NOT BE RESPONSIBLE FOR THE ACCURACY OR COMPLETENESS OF SCANNED COPIES OF THIS PLAN SHEET.					
HNTB CORPORATION 777 S FIGUEROA St, Ste 2300 LOS ANGELES, CA 90017			METRO ONE GATEWAY PLAZA LOS ANGELES, CA 90012		



NOTES:

1. EXACT LOCATION AND POSITION OF ROADSIDE SIGN WILL BE DETERMINED BY THE ENGINEER.
2. FOR ACCURATE RIGHT OF WAY DATA, CONTACT RIGHT OF WAY ENGINEERING AT THE DISTRICT OFFICE.
3. USE TYPE XI (HIGH INTENSITY) RETROREFLECTIVE SHEETING FOR BACKGROUND, BORDERS AND LEGENDS FOR ALL SIGNS.



REVISOR	DATE
CHRISTINA VILLELA	TEVODROS MEKURIA
CALCULATED/DESIGNED BY	CHECKED BY
SHAHRAM VAHDAT	SHAHRAM VAHDAT

STATE OF CALIFORNIA - DEPARTMENT OF TRANSPORTATION
Caltrans

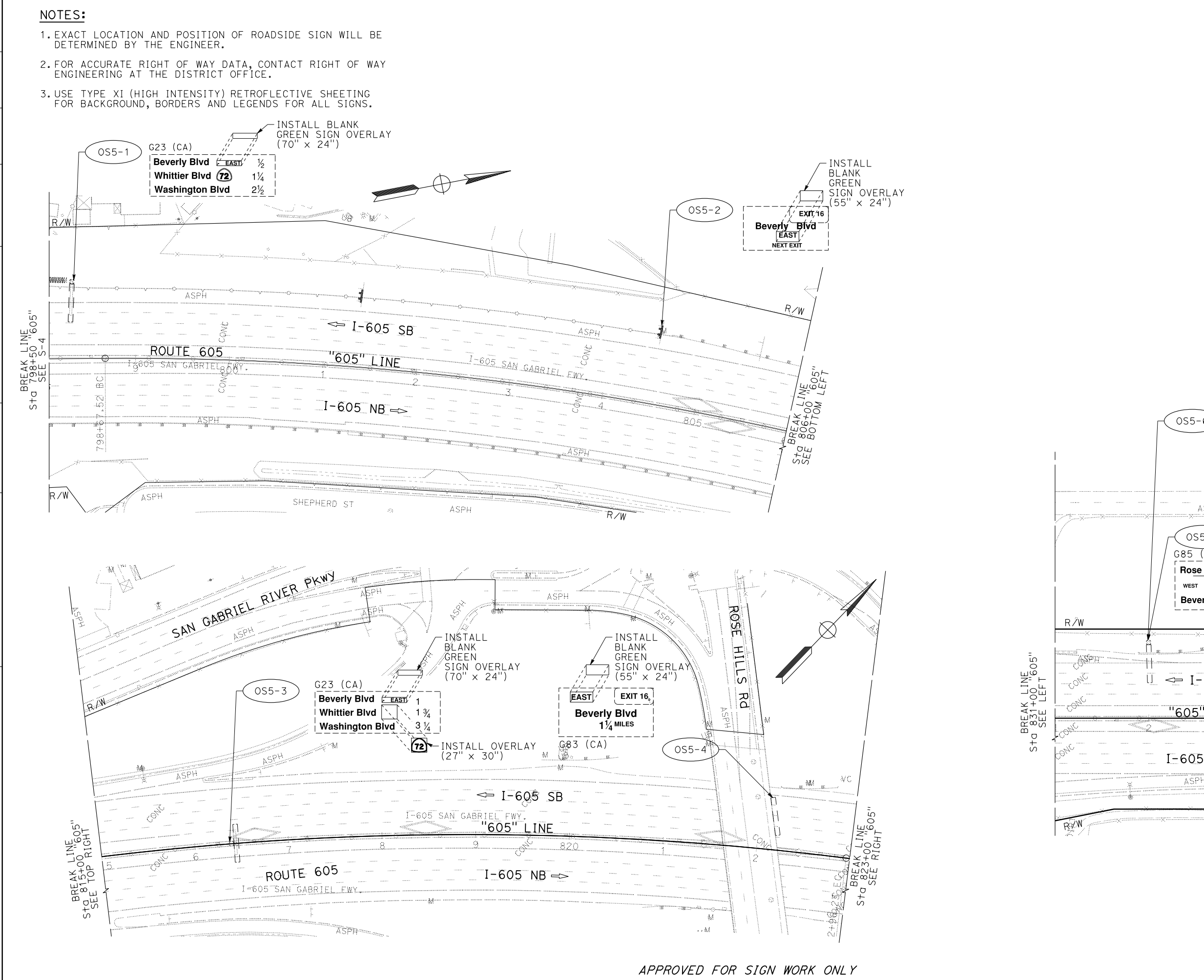
SIGN PLAN
SCALE: 1" = 50'

APPROVED FOR SIGN WORK ONLY

S-4

LAST REVISION DATE PLOTTED => 1/8/2026 00-00-00 TIME PLOTTED => 11:08:51 AM

STATE OF CALIFORNIA - DEPARTMENT OF TRANSPORTATION
Caltrans



Dist	COUNTY	LOCATION CODE	POST MILES TOTAL PROJECT	SHEET No.	TOTAL SHEETS
07	LA	605	R14.0/R17.2	96	163

REGISTERED CIVIL ENGINEER DATE 1/15/26
 SHAHRAM VAHDAT No. 47934 Exp. 12/31/27
 PLANS APPROVAL DATE
 THE STATE OF CALIFORNIA OR ITS OFFICERS OR AGENTS SHALL NOT BE RESPONSIBLE FOR THE ACCURACY OR COMPLETENESS OF SCANNED COPIES OF THIS PLAN SHEET.
 HNTB CORPORATION 777 S FIGUEROA St, Ste 2300 LOS ANGELES, CA 90017
 METRO ONE GATEWAY PLAZA LOS ANGELES, CA 90012

SIGN PLAN
 SCALE: 1" = 50'
S-5

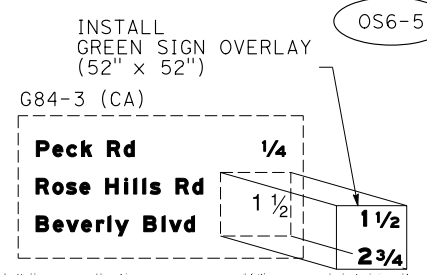
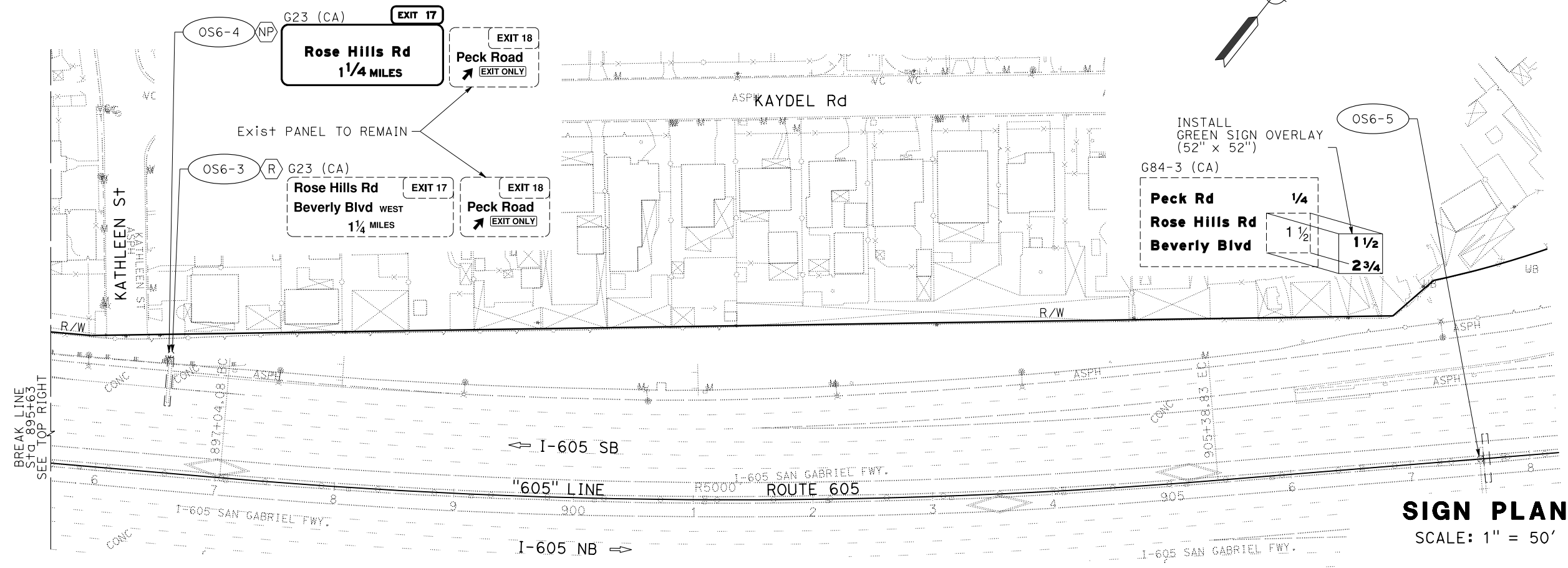
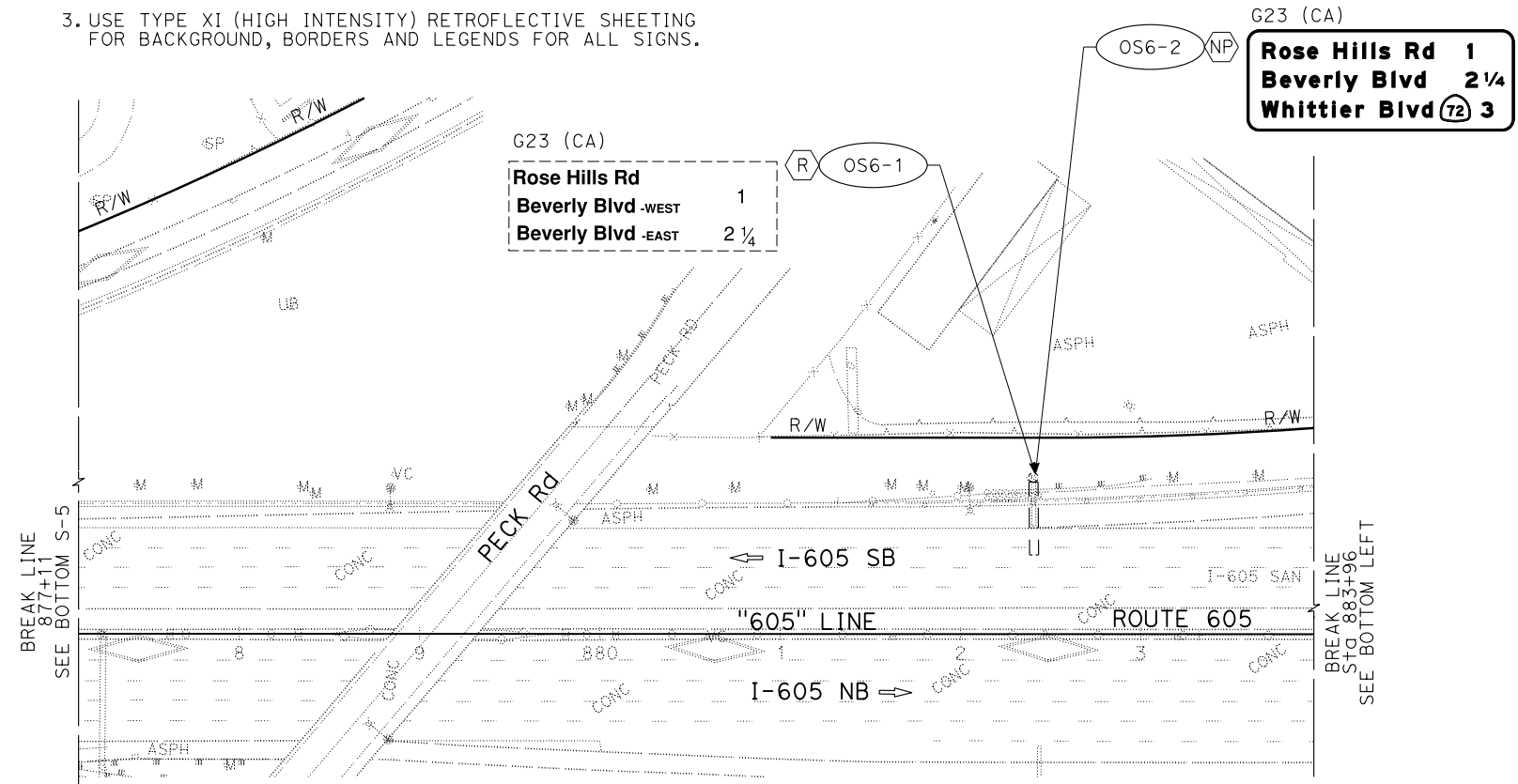
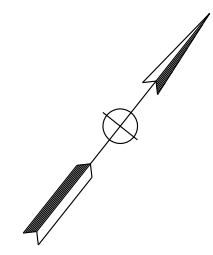
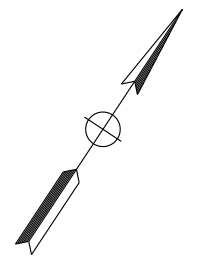
APPROVED FOR SIGN WORK ONLY

Dist	COUNTY	LOCATION CODE	POST MILES TOTAL PROJECT	SHEET No.	TOTAL SHEETS
07	LA	605	R14.0/R17.2	97	163

REGISTERED CIVIL ENGINEER	DATE	1/15/26
PLANS APPROVAL DATE		
<small>THE STATE OF CALIFORNIA OR ITS OFFICERS OR AGENTS SHALL NOT BE RESPONSIBLE FOR THE ACCURACY OR COMPLETENESS OF SCANNED COPIES OF THIS PLAN SHEET.</small>		
HNTB CORPORATION 777 S FIGUEROA St, Ste 2300 LOS ANGELES, CA 90017		METRO ONE GATEWAY PLAZA LOS ANGELES, CA 90012

NOTES:

1. EXACT LOCATION AND POSITION OF ROADSIDE SIGN WILL BE DETERMINED BY THE ENGINEER.
2. FOR ACCURATE RIGHT OF WAY DATA, CONTACT RIGHT OF WAY ENGINEERING AT THE DISTRICT OFFICE.
3. USE TYPE XI (HIGH INTENSITY) RETROREFLECTIVE SHEETING FOR BACKGROUND, BORDERS AND LEGENDS FOR ALL SIGNS.



SIGN PLAN
SCALE: 1" = 50'

APPROVED FOR SIGN WORK ONLY

STATE OF CALIFORNIA - DEPARTMENT OF TRANSPORTATION	FUNCTIONAL SUPERVISOR	CALCULATED/DESIGNED BY	REVISOR
	SHAHRAM VAHDAT	CHRISTINA VILLELA	TEVODROS MEKURIA
		CHECKED BY	DATE REVISED