



Exploring Regional Progress with the State of the Region Report

June 9, 2026

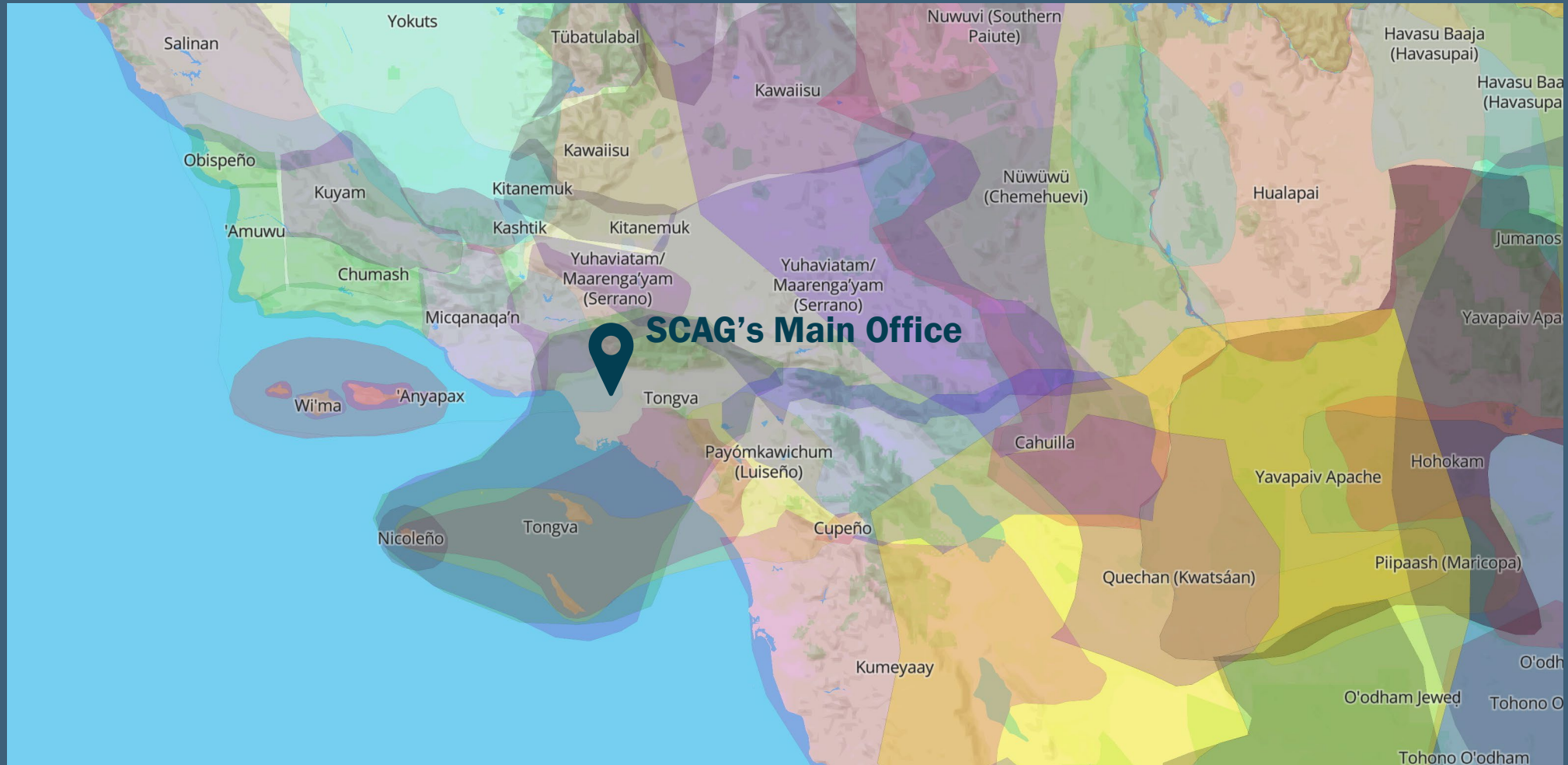


WWW.SCAG.CA.GOV

Housekeeping

1. Meeting length: 1.5 hour
2. This meeting is being recorded
3. All participant lines will be muted
4. At the end of each presentation, there will be Q&A
5. If you have a question during the presentation, please type it into the chat box or press the "raise hand" function
6. We will log all questions and then voice a selection at the end of the presentation
7. A recording of this webinar and the PowerPoint slides will be available on the SCAG website. We will send a link to everyone who has registered after the event

Land Acknowledgement



We want to know...

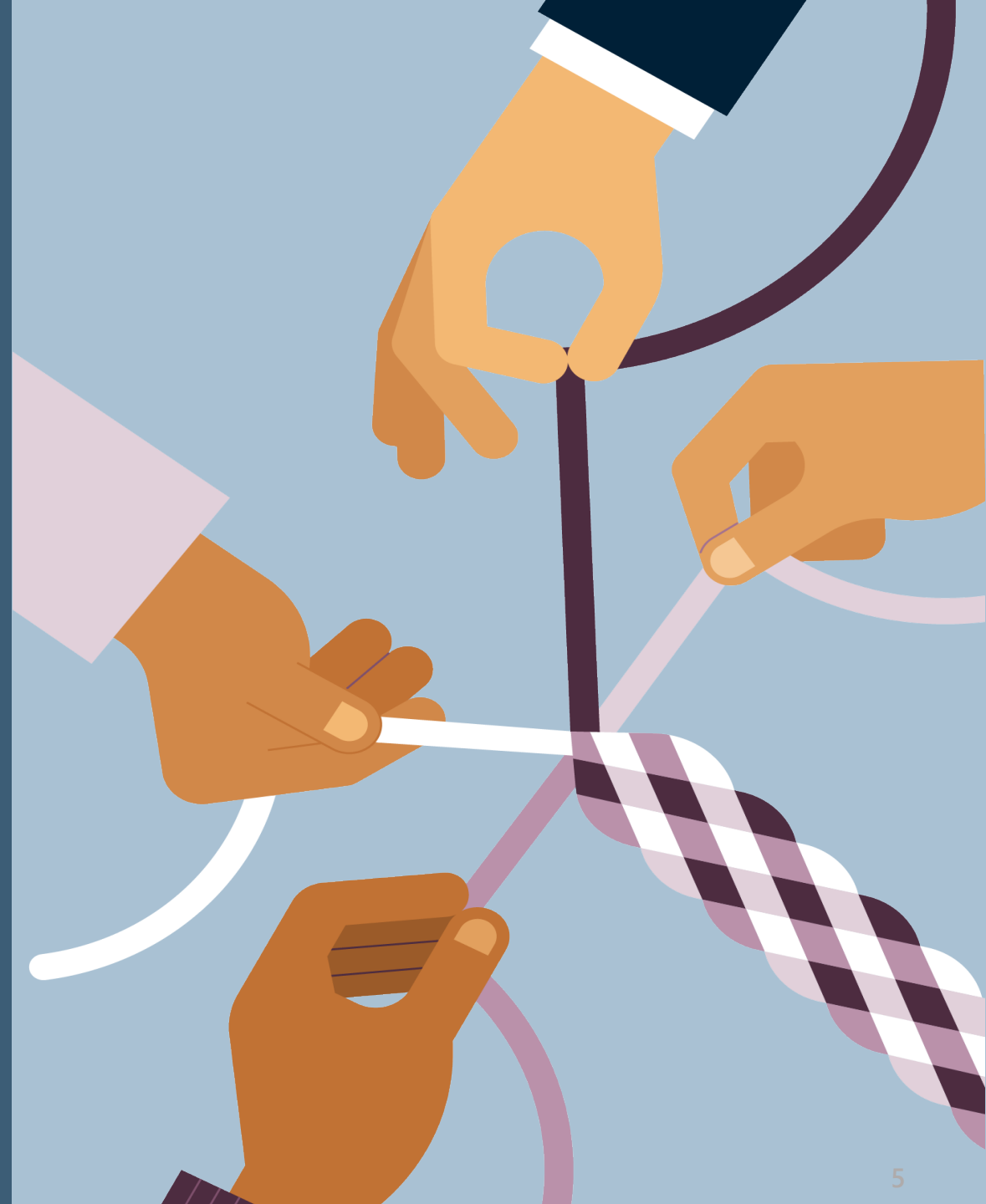
- What type of organization are you representing today?
 - What best describes where you are today?
- How can a State of the Region Report help you in your current work?

**Fill out the poll on
your screen!**



AGENDA

- Overview
- StoryMap Walkthrough
- Mentimeter Activity
- Key Findings
- Q&A



2026 State of the Region Report

June 9, 2026

Toolbox Tuesday





Purpose

The State of the Region report provides a baseline regional performance assessment to help **identify** future needs and **highlight** emergent issues in the SCAG region





State of the Region Report Overview

Context

- Previous reports published from 2000 to 2007
- Historical trends and current conditions

Content

- 49 metrics
- Focus on:
 - Demographics
 - Mobility
 - Communities
 - Environment
 - Economy

Data

- 2000 to 2024*
 - **Point-in-time (data collected for select years only)*
- Various data sources
(years reported dependent on data availability)

StoryMap

- Engaging interface
- Easy navigation
- Interactive charts





STORYMAP WALKTHROUGH



Collection

2026 State of the Region Report

This report provides a baseline performance assessment to help identify future regional needs and emergent issues in the SCAG region.

SCAG | April 2026

[Get started](#)

Visit the Help Page to learn more about how to navigate the report and interact with the charts.



1 Prelude



2 Introduction



3 Demographics



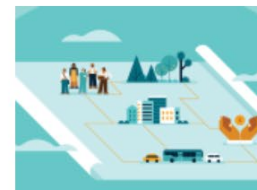
4 Mobility



5 Communities



6 Environment



7 Economy



8 Conclusion

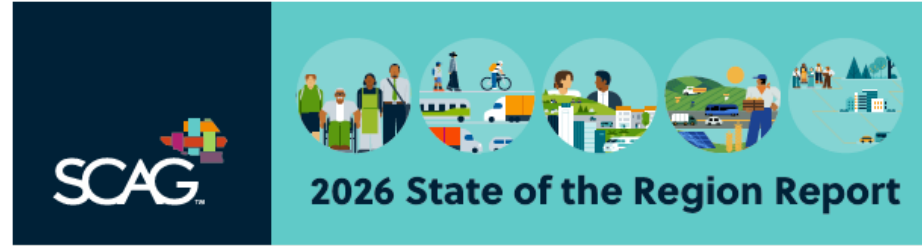


9 Help Page



STATE OF THE REGION FACTSHEET

https://scag.ca.gov/sites/default/files/2026-06/26-416-EEJ-0352-StateOfTheRegion-FactSheet_Final.pdf



OVERVIEW

SCAG's "2026 State of the Region Report" looks at baseline conditions in the SCAG region to identify emergent issues and future regional planning needs, and tracks the progress of Connect SoCal implementation strategies across Southern California.

Findings from the report will inform the development of the Connect SoCal 2050 and other future SCAG efforts to foster a healthy, prosperous, accessible, and connected region.

REPORT FINDINGS

Demographics

↑ The region added **2.2 million people.**
2000-2024



SCAG needs to plan for a changing population. In the past two decades, population growth in the region has slowed, while the number of households increased and household size has declined. The region is also experiencing greater ethnic diversity, higher median age, and increased educational attainment.

Mobility

↑ Average travel time increased **2.3 minutes.**
2000-2024



Regional mobility is evolving. Travel mode share has shifted, due to impacts from the COVID-19 pandemic, resulting in an increase in teleworking and declines in single-occupancy vehicle and transit use. Transportation safety is still a big concern in the SCAG region, with a need to reduce fatalities and serious injuries, especially for people walking and biking.

Communities

↑ Total housing increased by **1.1 million units.**
2000-2024



The region continues to face ongoing housing strain. For the past 24 years, the SCAG region has struggled to meet the housing needs of its diverse communities. As a result, many households, especially renters, are spending more on housing. Homeownership is also declining, and housing stock is aging.

Environment

↓ Vehicle miles traveled per capita decreased by **8%.**
2000-2024



The region needs to prepare for more environmental challenges. Air quality in the SCAG region improved significantly over the past two decades. However, episodes of extreme heat and drought have been ongoing problems, and data suggests climate related risks will continue to increase, adversely impacting many communities.

Economy

↑ Regional GDP increased by **\$1.3 trillion.**
2000-2024



The region is economically resilient. The SCAG regional economy is highly diversified with a growing workforce. The unemployment rate is significantly lower than in 2010 and the median household income is rising while the region's poverty rate is decreasing. These trends suggest the region's economy can handle and recover from shocks such as recessions, natural disasters, and global crises, while staying stable and growing.

“As the demographics of the SCAG region evolve, so does the collective vision of what the region should look like, what its priorities should be, and what course should be set for its future. The State of the Region Report is a tool to inform that process.”



Scan the QR code to learn more.

From scag.pdf 36-416-EEJ-0352-2026-06-21



MENTIMETER ACTIVITY



menti.com
9762 1941





REPORT FINDINGS



Planning for a Changing Population

In the past two decades, **population growth** in the region has **slowed**, while the **number of households increased** and **household size has declined**.

The region is also experiencing **greater ethnic diversity**, **higher median age**, and **increased educational attainment**.



Regional Mobility is Evolving

Impacts from the COVID-19 pandemic have resulted in an **increase in teleworking** and **declines in single-occupancy vehicle and transit use.**

Transportation safety is **still a big concern**, with a need to reduce fatalities and serious injuries, especially for people walking and biking.



Navigating Persisting Housing Strains

For the past 24 years, the region has **struggled to meet the housing needs** of its diverse communities.

As a result, many households, especially **renters**, are **spending more** on housing.

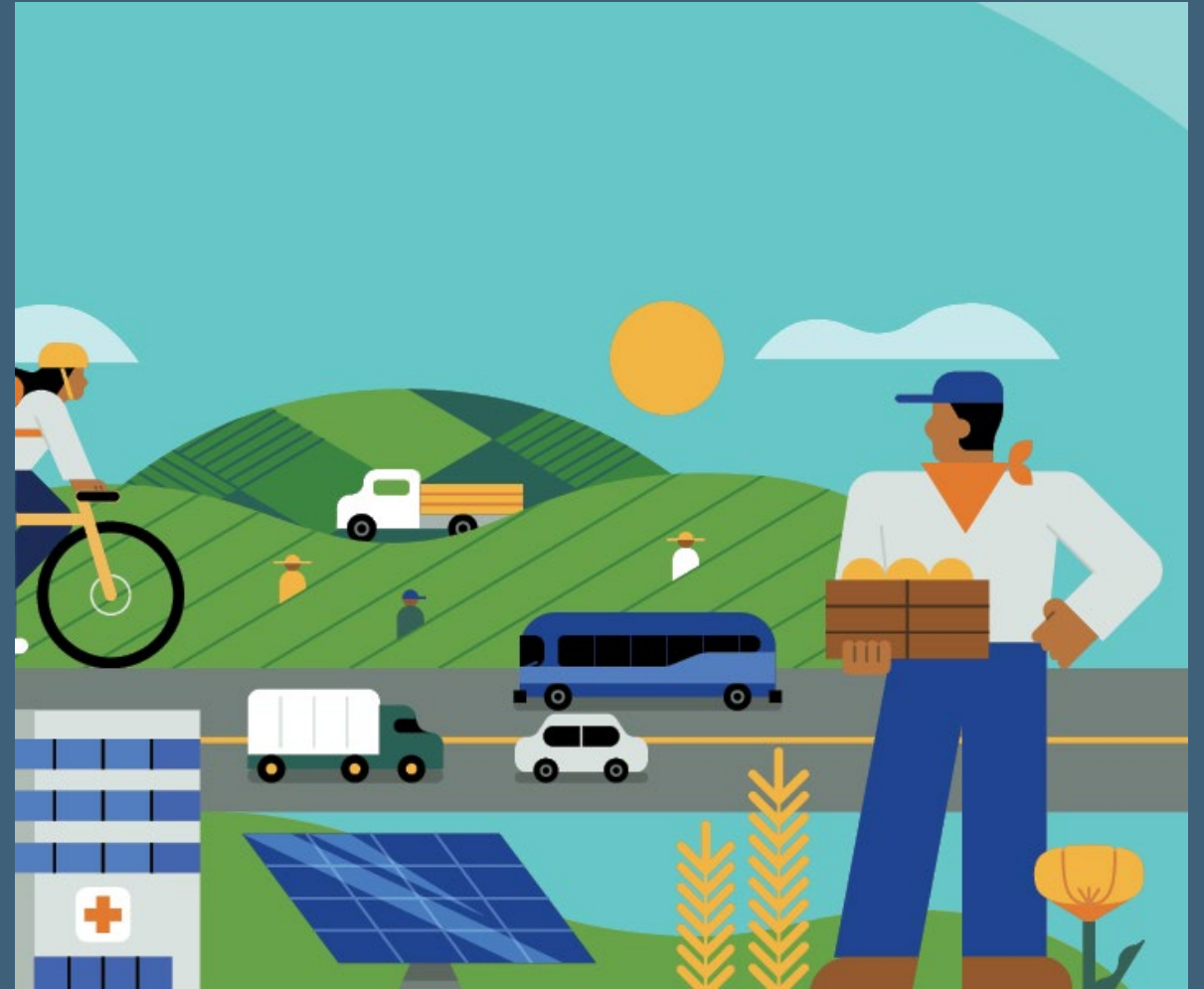
Homeownership is also **declining**, and **housing stock** is **aging**.



Preparing for Environmental Changes

Air quality in the SCAG region **improved significantly** over the past **two decades**, with **water consumption decreasing**.

Extreme heat and drought are **ongoing problems**, and data suggests **climate related risks** will continue to **increase**, adversely impacting many communities.



Achieving Economic Resilience

The **unemployment rate** is **significantly lower** than in 2010 and the **median household income** is rising while the region's poverty rate is decreasing.

These trends suggest the region's economy can **handle** and **recover** from **shocks** such as recessions, natural disasters, and global crises, while maintaining stability and growth.





QUESTIONS?



View the 2026 State of the Region Report



For more information, contact:

Anita Au, Planning Supervisor
au@scag.ca.gov

Jeannie Ma, Assistant Regional Planner
ma@scag.ca.gov

Jasper Dwyer, Junior Planner
dwyerj@scag.ca.gov

Tell us how we did!

Take a quick 2-minute survey to help us improve future Toolbox Tuesdays!

