

# WELCOME TO SCAG

New Member Orientation

02/23/2021

[www.scag.ca.gov](http://www.scag.ca.gov)



## Vision & Mission



### VISION

Southern California's Catalyst for a Brighter Future

### MISSION

To foster innovative regional solutions that improve the lives of Southern Californians through inclusive collaboration, visionary planning, regional advocacy, information sharing, and promoting best practices.

## SCAG Facts



191

Cities

6

Counties

19.1

Million People

48.1%

State Population

15th

Largest Economy  
in the World

\$1.2T

Regional GDP

67%

State's  
Disadvantaged  
Communities



## SCAG Regional Issues



TRANSPORTATION



GOODS MOVEMENT



HOUSING



AIR QUALITY



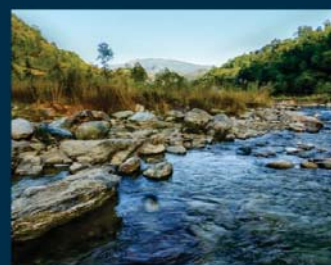
SCS/LAND USE



FUNDING



LONG TERM GROWTH FORECAST



WATER

## Primary Roles & Responsibilities

- Develop a long-range Regional Transportation Plan (RTP), including a Sustainable Communities Strategy (SCS), to meet greenhouse gas (GHG) reduction targets.
- Develop a short-range Transportation Improvement Program.
- Develop a long-term regional growth forecast.
- Develop a Regional Housing Needs Assessment (RHNA).
- Provide a forum to address issues of regional significance.
- Serve as a regional data and information center.

## Benefits of Membership

- A Regional Voice
- A Unique Regional Forum
- Advocacy
- Assistance in Achieving Local Objectives
- Tools, Data & Training
- Conferences & Events



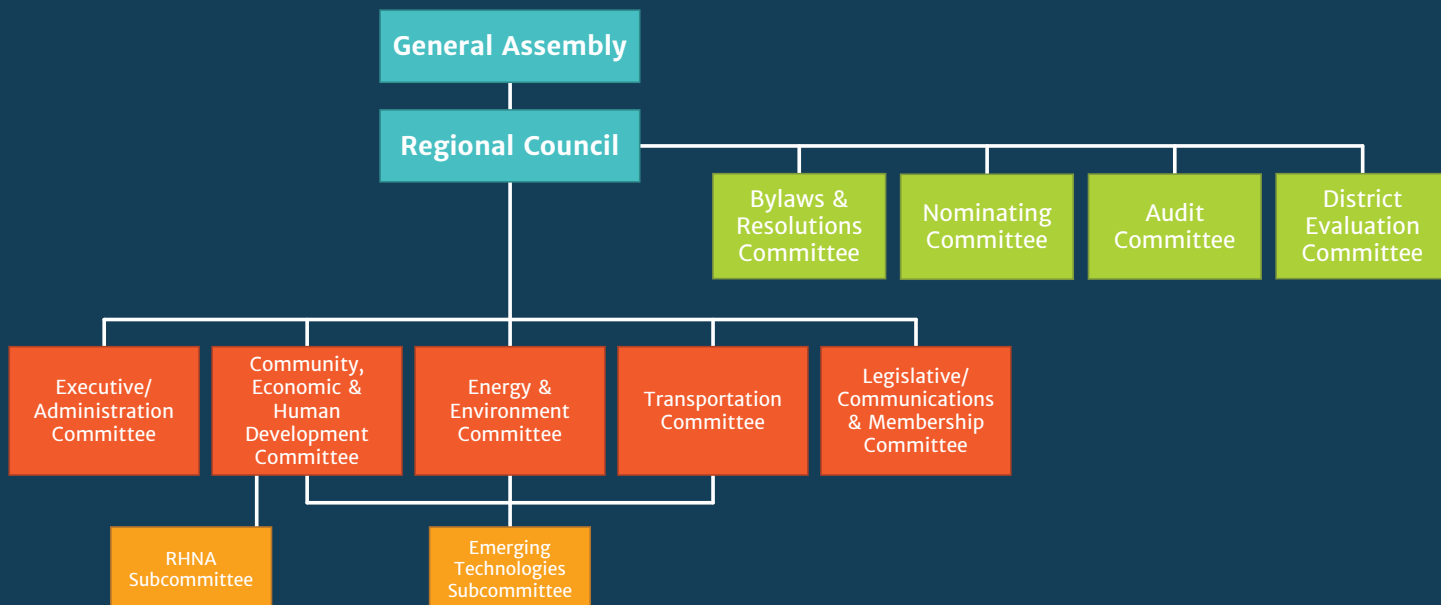
## Legislative Advocacy



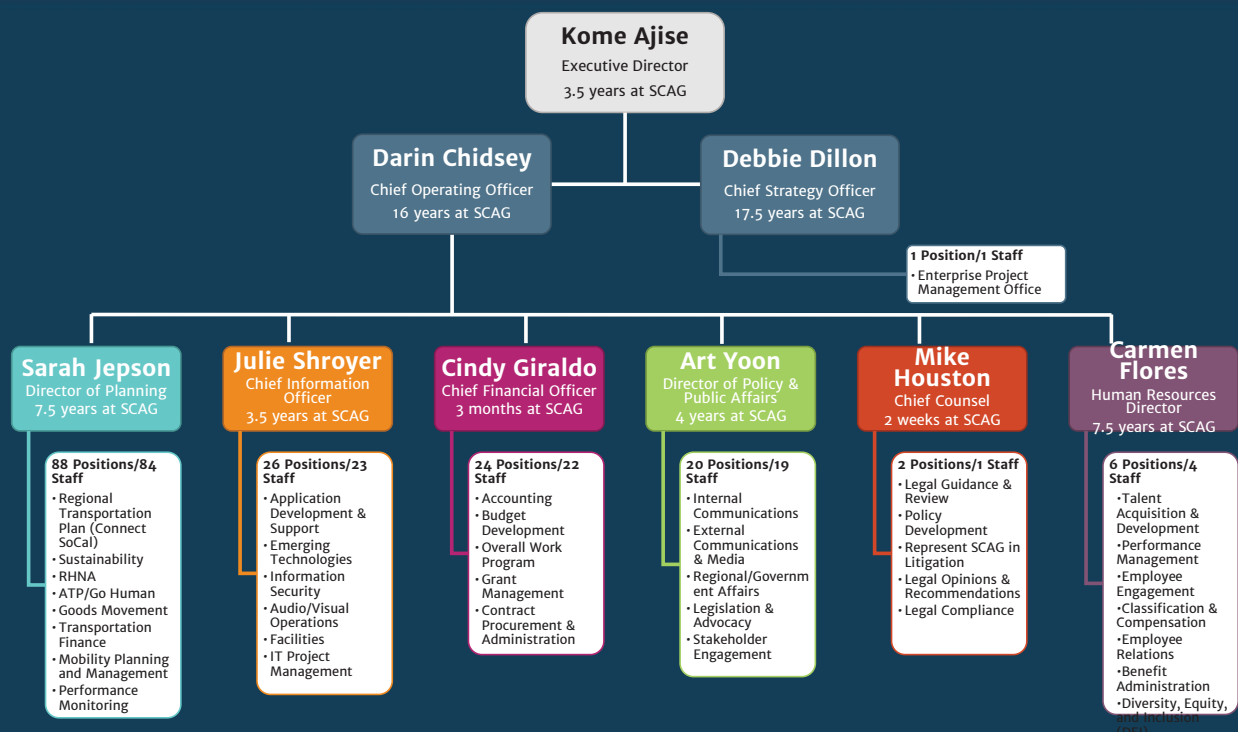
- Legislative Communications and Membership Committee
- State and Federal Advocacy
- Policy Development
- Stakeholder Support



## Governing Structure



# Executive Team Organizational Chart – November 2020



## Divisions & Departments

### EXECUTIVE MANAGEMENT

- Executive Director– Kome Ajise
- Chief Operating Officer– Darin Chidsey
- Chief Strategy Officer – Debbie Dillon

### LEGAL SERVICES

- Chief Counsel/Director of Legal Services
- Deputy Legal Counsel

## **Divisions & Departments**



### **PLANNING & PROGRAMS**

- **Transportation Planning & Programming**
- **Modeling & Forecasting**
- **Goods Movement & Transportation Finance**
- **Sustainability**
- **Mobility Planning and Management**
- **Planning Strategy Department**
- **Compliance & Performance Monitoring**

## **Divisions & Departments**



### **POLICY & PUBLIC AFFAIRS**

- **Media & Public Affairs**
- **Legislation**
- **Office of Regional Council Support**
- **Regional Services**

### **ADMINISTRATION**

- **Finance**
- **Accounting**
- **Budgets & Grants**
- **Contracts**
- **Human Resources**
- **Information Technology**



## Administrative Issues



- Stipends and Expense Report
- Confirming Meeting Attendance
- Agenda Distribution
- Form 700



## Highlights of Connect SoCal

2020-2045 Regional Transportation Plan/Sustainable Communities Strategy



### WHAT?



### WHY?

Long-term Vision and Investment Framework

Federal Requirement

- Updated every 4 years to maintain eligibility for federal funding
- Long Range: 20+ years into the future
- Financially-constrained: Revenues = Costs
- Passes regional emission standards (Conformity)

State Requirement

- Must meet SB 375 requirements (address GHG reductions)

- Transportation knows no boundaries
- Coordinate regional projects
- Facilitates regional/local competitiveness for funding
- Integrates transportation investments and land use strategies
- Allows any federally-funded or regionally-significant projects to maintain their eligibility for federal funding

## Connect SoCal is a...



**COMPASS**  
NOT A ROADMAP



**VISION**  
NOT A GUARANTEE



**PLATFORM**  
FOR REGIONAL COLLABORATION AND  
PARTNERSHIPS

## Connect SoCal Adoption

Adopted for Federal purposes May 7, 2020 and for  
State SB 375 conformity on September 3, 2020





# Connect SoCal Adoption

## CORE VISION



COMPLETE STREETS  
INVESTMENT



DEMAND & SYSTEM  
MANAGEMENT



GOODS  
MOVEMENT



SUSTAINABLE  
DEVELOPMENT



SYSTEM PRESERVATION  
& RESILIENCE



TRANSIT  
BACKBONE

## KEY CONNECTIONS



SHARED MOBILITY &  
MOBILITY AS A SERVICE



SMART CITIES &  
JOB CENTERS



ACCELERATED  
ELECTRIFICATION



GO ZONES



HOUSING SUPPORTIVE  
INFRASTRUCTURE

# Connect SoCal Adoption

## Benefits of Plan Implementation

### Reduced Daily Vehicle Miles Traveled (per capita)

2016  
BASE YEAR  
**23.2**  
MILES

2045  
BASELINE  
**21.9**  
MILES

2045  
PLAN  
**21.0**  
MILES

Baseline to Plan  
Comparison

**-4.1%**

Base Year to Plan  
Comparison

**-9.5%**

### Reduced Daily Minutes of Delay (per capita)

2016  
BASE YEAR  
**10.5**  
MINUTES

2045  
BASELINE  
**11.6**  
MINUTES

2045  
PLAN  
**9.0**  
MINUTES

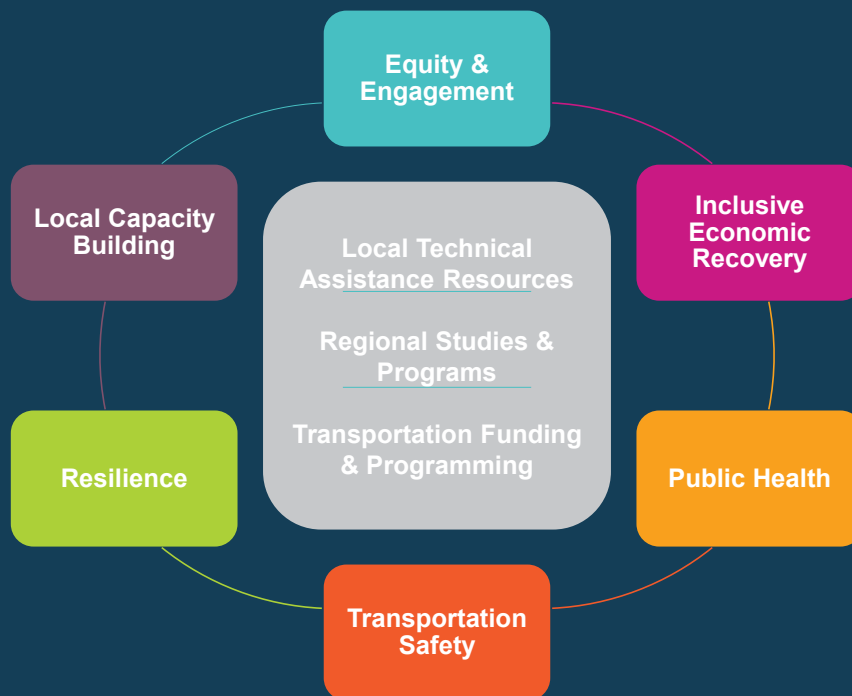
Baseline to Plan  
Comparison

**-22.4%**

Base Year to Plan  
Comparison

**-14.1%**

## Connect SoCal Implementation Strategy



## Connect SoCal Implementation Strategy

### Local Technical Assistance Resources



Sustainable  
Communities  
Program



Housing  
Program

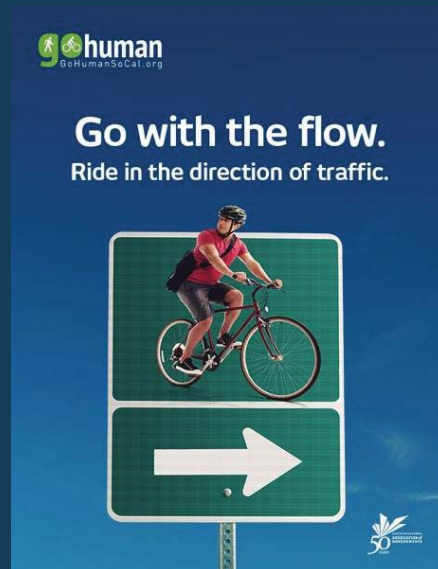


Call for  
Collaboration

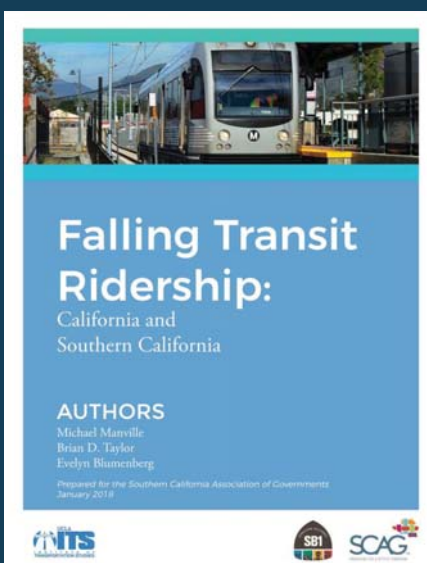


Go Human

## Go Human



## Research & Analysis



## SCAG's Commitment to Equity & Social Justice



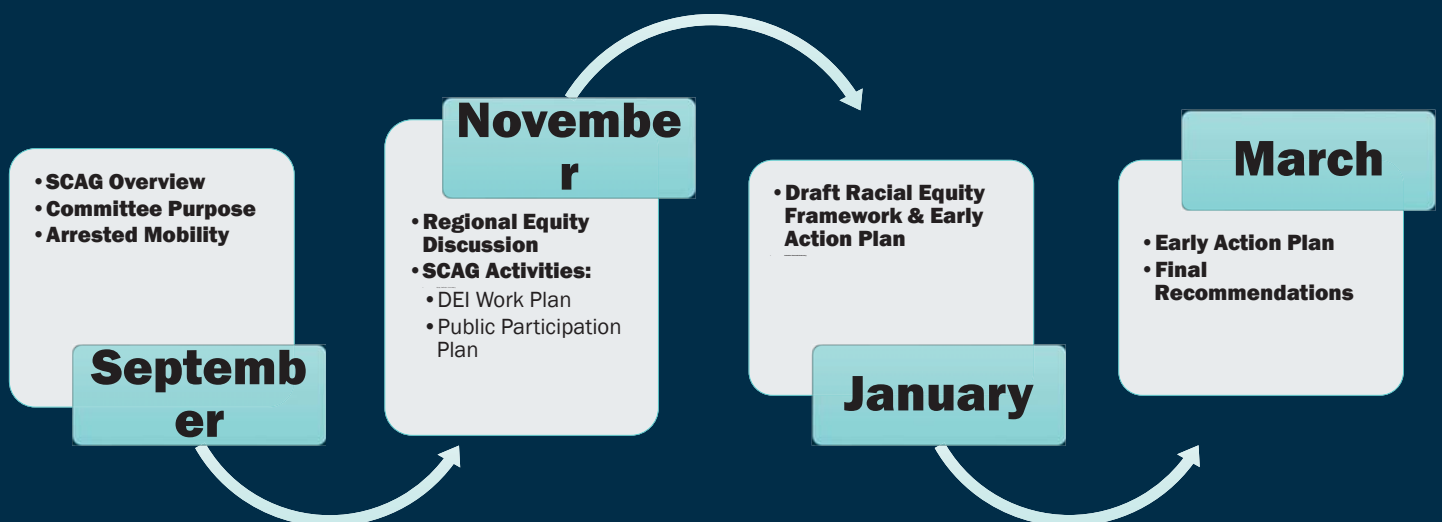
- July 2020 – SCAG Board adopted resolution
- Established **Special Committee on Equity and Social Justice**
- Focus on key deliverables:
  - Definition of equity
  - Equity inventory
  - Equity framework
  - Diversity, Equity, and Inclusion work plan
  - Public Participation Plan review



Staff report on board action available [here](#)

Special Committee on Equity & Social Justice [website](#)

## President's Committee on Equity & Social Justice



## Defining Equity

Leading with *racial equity* to address the pervasive and deep inequities faced by people of color across the region.

“As central to SCAG’s work, racial equity describes the actions, policies, and practices that *eliminate bias and barriers* that have historically and systemically marginalized communities of color, *to ensure all people can be healthy, prosperous, and participate fully in civic life.*”

## Researching & Understanding Our Baseline

- Analysis of existing disparities and inequities
- Indicators across four main categories:
  - Economic Vitality
  - Healthy and Complete Communities
  - Mobility
  - Environment
- Informs Racial Equity Early Action Plan & future planning work



## Equity Framework & Early Action Plan (EAP)

- Early Action Plan (EAP) critical for ensuring work advances and endures beyond life of Special Committee
- Includes range of range of internally and externally focused actions
- Iterative process
- Short-, medium-, and long-term actions
- Need for partnerships with other agencies and institutions

## Establishing an Equity Framework

### Goals:

- Shift the Organizational Culture
- Center Racial Equity in Regional Policy & Planning
- Encourage Racial Equity in Local Planning Practices
- Activate and Amplify

### Strategies:

- **Listen & Learn:** Develop a shared understanding of our history of discrimination and structural barriers that perpetuate inequities today.
- **Engage & Co-Power:** Create an environment where everyone is included, able to share, and equipped to discuss inequities.
- **Integrate & Institutionalize:** Focus on systems change to improve racial equity.

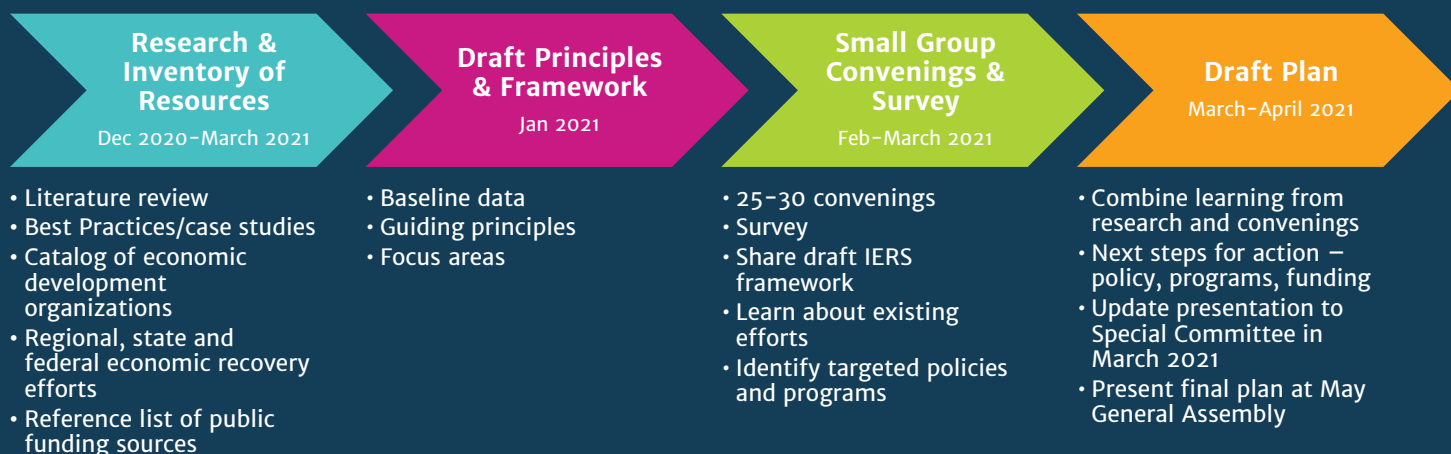


## Identifying Early Actions

What activities can SCAG pursue to...

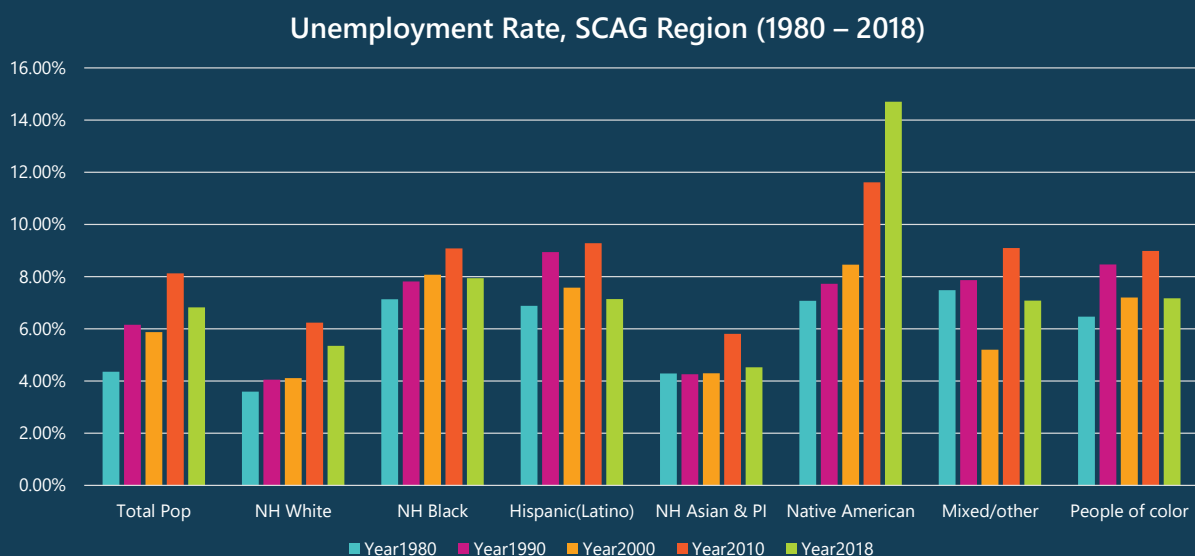
- **Listen & Learn:** Expand understanding among staff, SCAG's elected leadership, local elected officials and the general public
- **Engage & Co-Power:** Establish processes at SCAG, support local planning processes and expand understanding of planning processes to engage and co-power communities of color in land-use and transportation planning and policy-making
- **Integrate & Institutionalize:** Update internal policies, regional plans and policies, practices to center racial equity in all aspects of work; support local plan development and join with others in different fields & sectors to address regional inequities.

## Inclusive Economic Recovery Strategy (IERS) – Work Plan



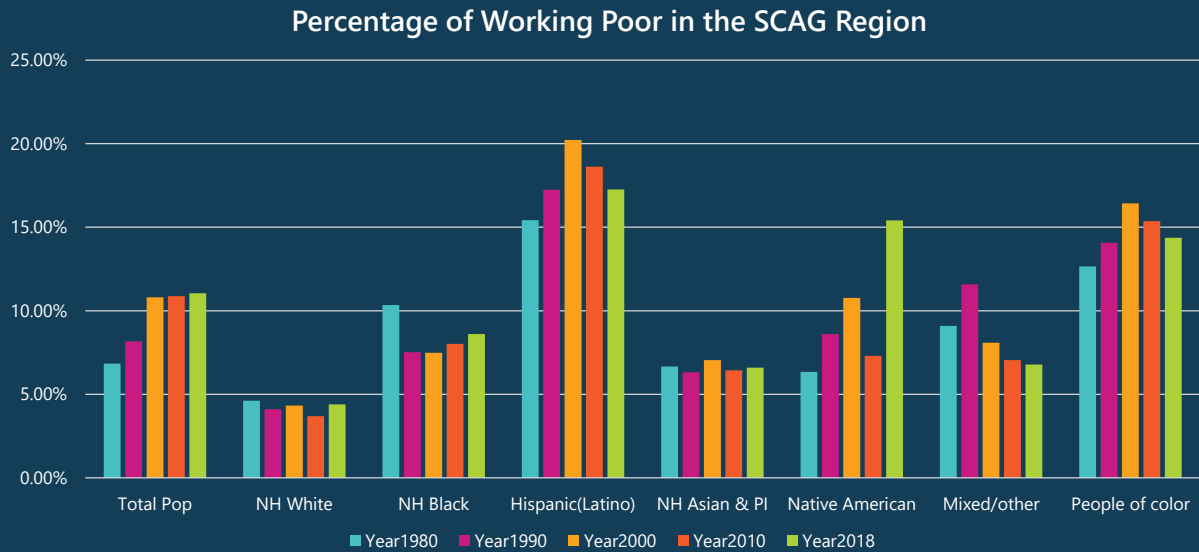
# Preliminary Baseline Data for the SCAG Region *National Equity Atlas*

## SCAG Region Baseline Equity Indicators



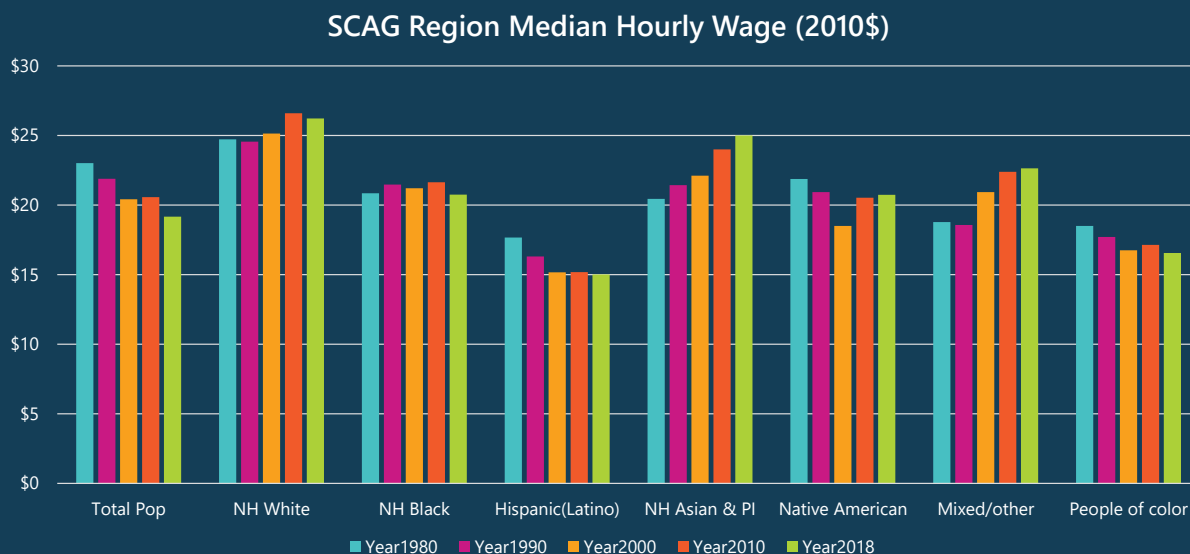
While the disparity in unemployment between the White population and People of Color (POC) has shrunk, the unemployment rate for POC is still 38% higher.

## SCAG Region Baseline Equity Indicators



For all races, the percentage of Working Poor has increased in the SCAG region; People of Color are Working Poor at rates 3 times as high as the White population.

## SCAG Region Baseline Equity Indicators

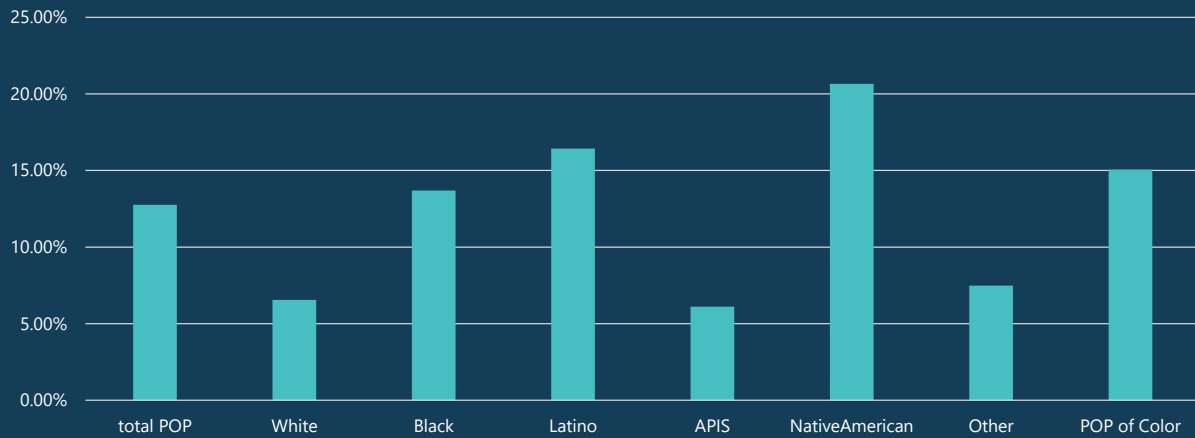


The Median Hourly Wage for POC was 75% that of the White population in 1980; in 2018 it had decreased to 63% of the median wage for the White population.

## SCAG Region Baseline Equity Indicators



Percentage of People Living in High Poverty (> +30%) Tracts,  
SCAG Region (2017)



In 2017, 20% of the SCAG region's People of Color lived in high poverty census tracts, compared to 9% of the white population.

35

## IERS – Guiding Principles



- Center on racial and gender equity
- Rebuild our region's middle class
- Contribute to a climate ready region
- Tailor our strategies
- Reflect new and diverse voices

36

## IERS – Focus Areas

- Transportation
- Housing Production
- Infrastructure
- Sector Based Strategies
- Human Capital

## Universal Needs, Opportunities



Affordable Housing



Transportation Investment



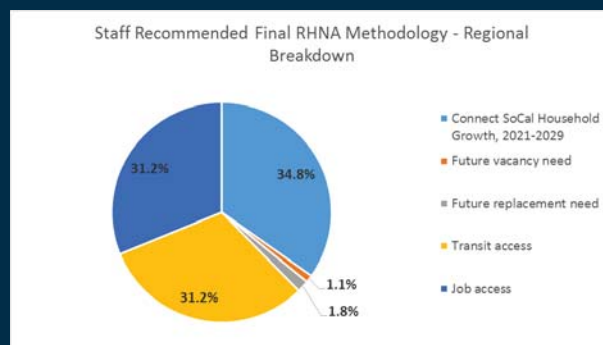
Digital Divide

## 6<sup>th</sup> Cycle Regional Housing Needs Assessment

### Regional Determination

- 1,341,827 Housing Unit Need
  - Very-Low: 351,796
  - Low: 206,807
  - Moderate: 223,957
  - Above-Moderate: 559,267
- Process
  - SCAG submits to HCD RHNA Consultation Package (6/19)
  - HCD provides Draft Regional Determination (8/19)
  - SCAG submits Objection to Determination (8/19)
  - HCD provides Final Determination (10/19)
  - SCAG President meets with HCD to reinforce concerns (01/20)

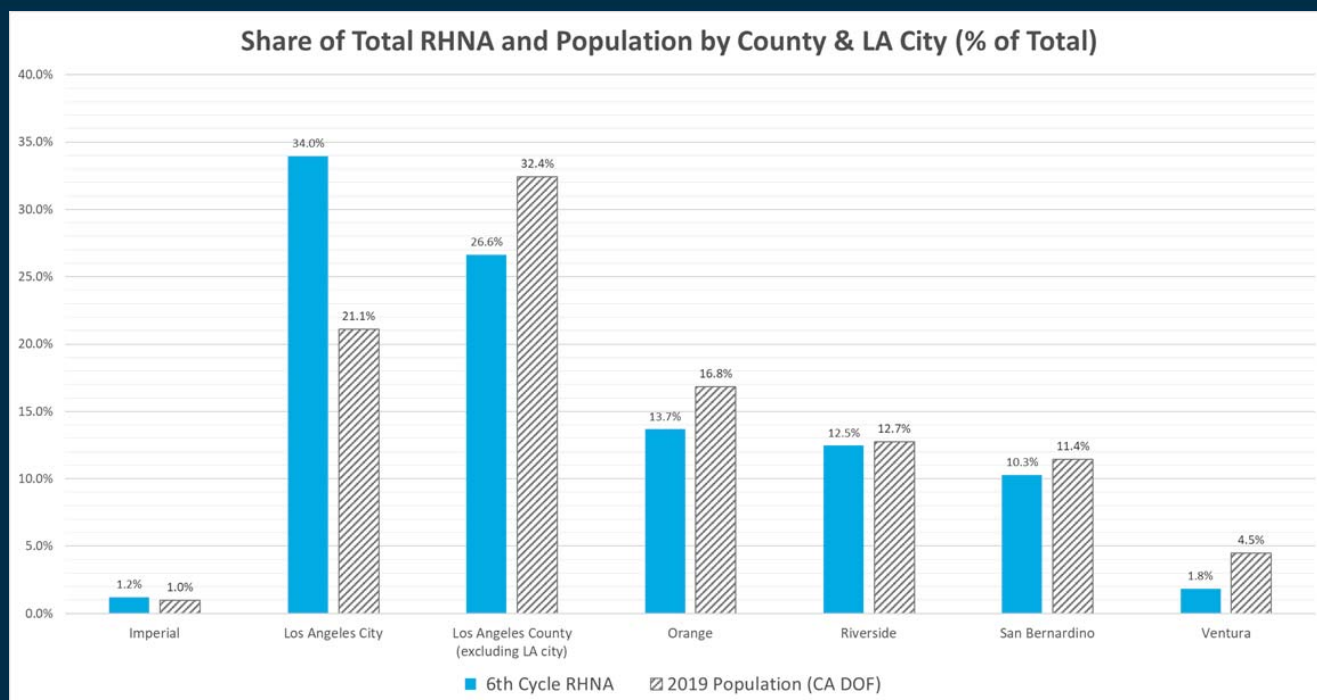
### Regional Methodology



- February 2019: Methodology development begins
- March 2020: Final methodology adoption
- September 2020: Draft RHNA Allocation
- October 2020-January 2021: RHNA Appeals Process
- March 2021: Final RHNA Plan adoption

39

## Draft RHNA Allocation Plan



40

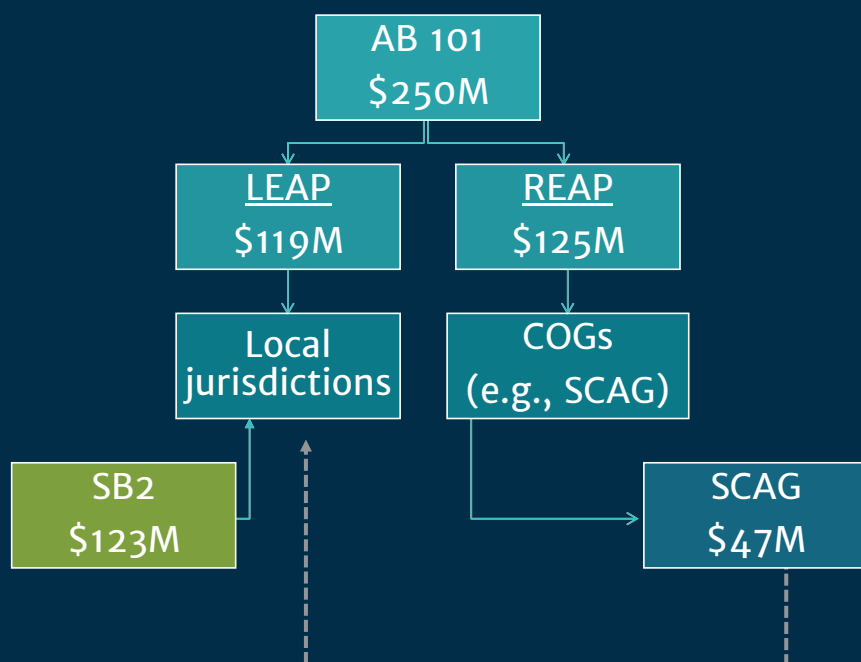


## 2020 Housing Element Updates

- March 2021: Final RHNA Allocation Plan adoption
- October 2021: Housing elements must be adopted
- February 2021: Housing elements must be adopted by this date to avoid reverting to a 4 year housing element cycle
- Several recent housing bills require additional analyses on selecting sites to meet RHNA
  - AB 1397 (additional analyses)
  - SB 166 (no net loss)
  - Others

## AB 101: Regional Early Action Program

- Establishes a one-time funding source to accelerate housing production and increase housing supply
- Intended to facilitate meeting 6th RHNA allocations, including supporting housing element updates



## Data & Information Services for Local Jurisdictions

### GIS Services/Data/Modeling

- ArcGIS Free Trainings
- Transportation Model & Data
- Census/Demographic and Land Use Data
- Modeling Analysis
- Technical Support
- <https://scag.ca.gov/data-tools>

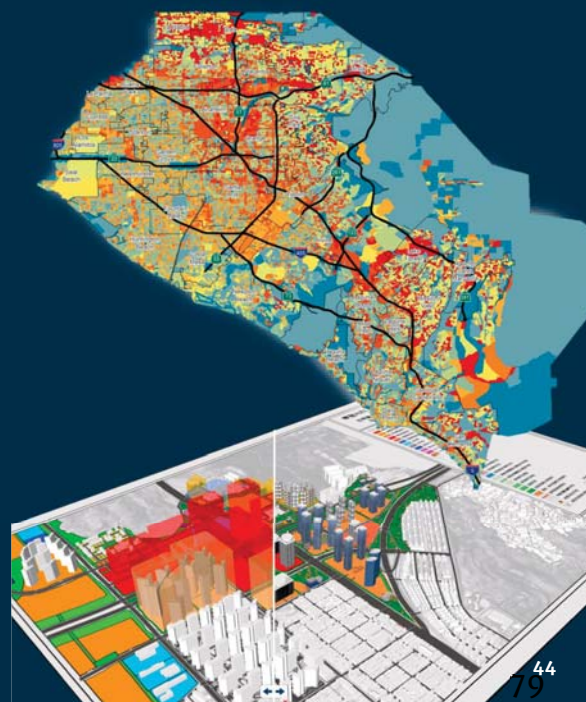
### Benefits and Products

- Planning Development
- Traffic and Air Quality Analysis
- Grant Applications for Community Projects
- Research & Publication

## Data & Information Services for Local Jurisdictions

### Regional Data Platform

- The Housing Element Parcels HELPR app powered by the Regional Data Platform
- Parcel data can be brought into other Esri tools and applications for further analysis, visualization, and reporting
- SCAG's General Plan Local Information Service Team (LIST) will provide support and training resources
- Esri and SCAG will support other aspects of General Plan updates, like Safety and Environmental Justice



# Thank You!

[www.scag.ca.gov](http://www.scag.ca.gov)

