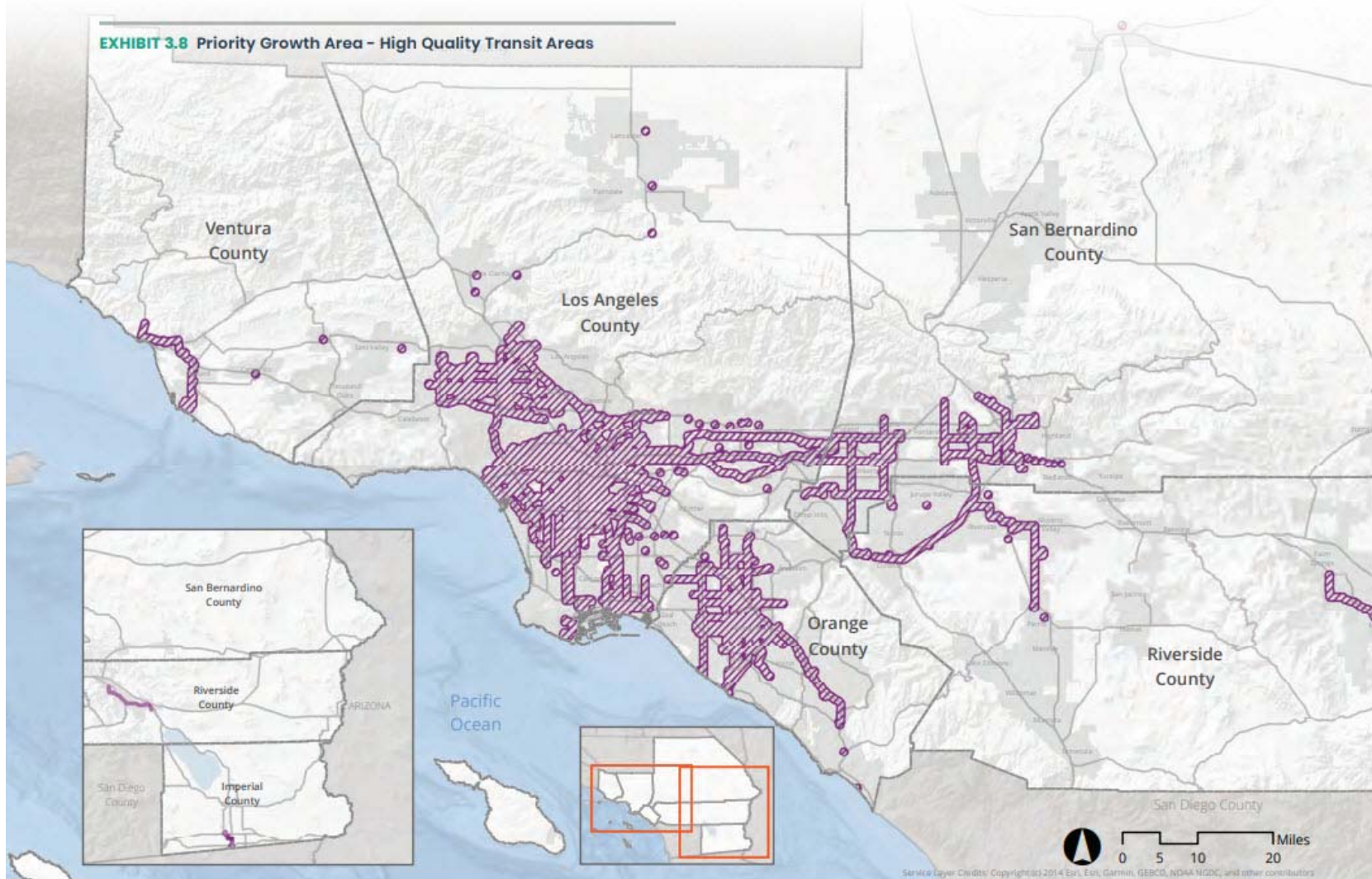


EXHIBIT 3.8 Priority Growth Area - High Quality Transit Areas



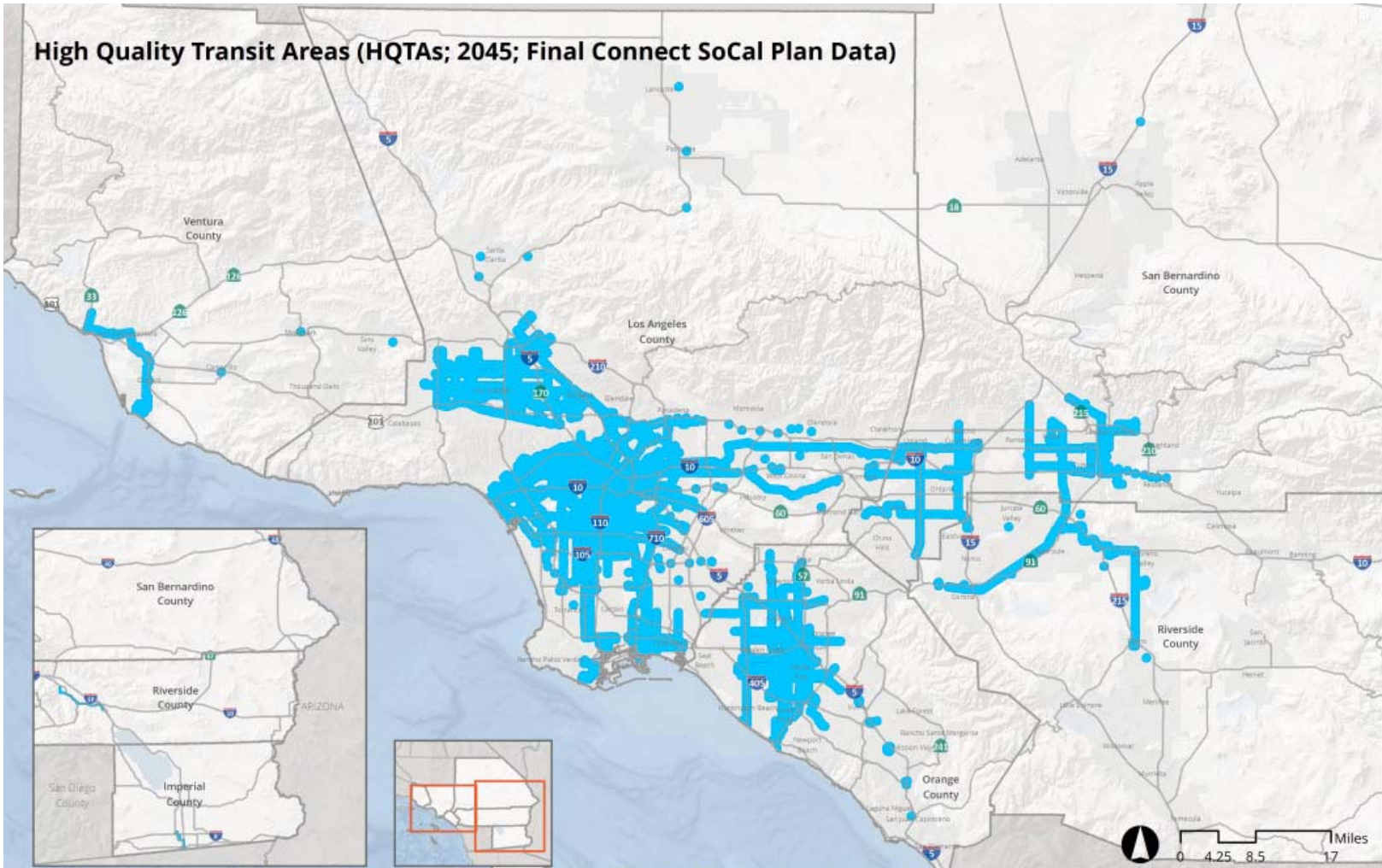
High Quality Transit Areas (2045)

 HQTA

Source: County Transportation Commissions, SCAG, 2019

Note: To assist in identifying transit priority project areas, SCAG identifies Major Transit Stops and High Quality Transit Corridors (HQTCs), and their surrounding areas in one-half mile radius distance, as specified in Section 21155.(b)(3). Major transit stops and HQTCs are extracted from 2045 plan year data of the Draft Connect SoCal. SCAG's High Quality Transit Area (HQTA) is within one-half mile from Major Transit Stops and HQTCs and developed based on the language in SB375. Please note that this map may undergo changes as SCAG continues to update its transportation network as part of the Connect SoCal development process and SCAG shall not be responsible for local jurisdiction's use of this map. Updates to this information will be forthcoming as information becomes available.

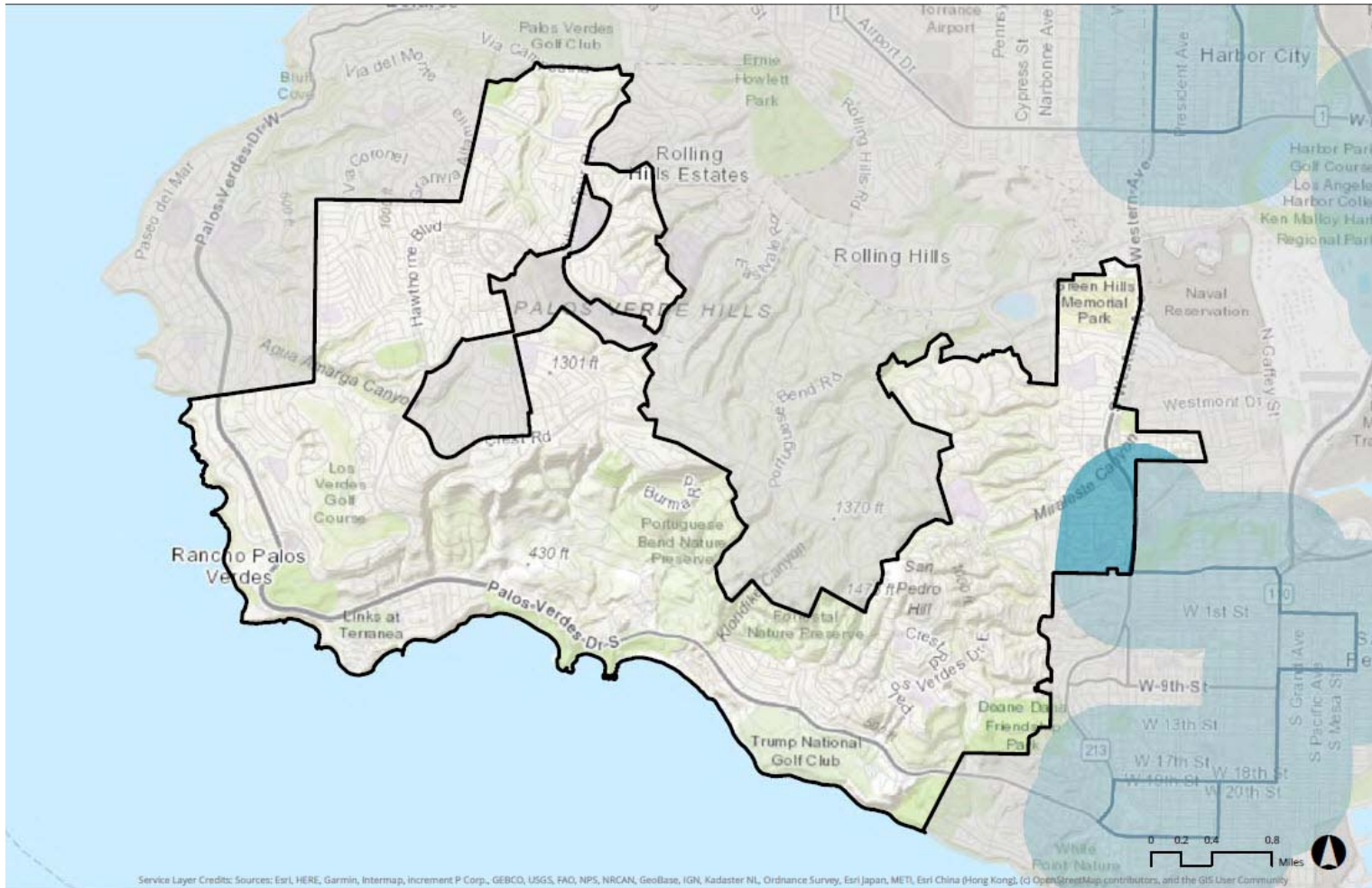
High Quality Transit Areas (HQTAs; 2045; Final Connect SoCal Plan Data)



Please note this map depicts the "High Quality Transit Areas (HQTAs)" within the SCAG Region and is based on the planned year transit network for Connect SoCal (the 2020 RTP/SCS) as well as input from County Transportation Commissions. SCAG updates its inventory of planned major transit stops and high quality transit corridors with the adoption of a new RTP/SCS, once every four years. However, transit planning studies may be completed by transit agencies on a more frequent basis than the RTP/SCS is updated by SCAG. Local jurisdictions should consult with the appropriate transit provider(s) to obtain the latest information on planned transit routes, stop locations, and service intervals. This map is intended for planning purposes only, and SCAG shall incur no responsibility or liability as to the completeness, currentness, or accuracy of this information. SCAG assumes no responsibility arising from use of this information by individuals, businesses, or other public entities. The information is provided with no warranty of any kind, expressed or implied, including but not limited to the implied warranties of merchantability and fitness for a particular purpose.

Service Layer Credits: Esri, DeLorme, GEBCO, NOAA NGDC, and other contributors. Copyright © 2014 Esri

- City Boundaries
- High Quality Transit Areas (HQTAs)
- Freeway



Major Transit Stops and High Quality Transit Corridors in City of Rancho Palos Verdes [Year 2045]

- Major Transit Stops
- ~ High Quality Transit Corridors (HQTCS)
- High Quality Transit Areas (HQTAs)

Note: To assist in identifying transit priority project areas, SCAG identifies Major Transit Stops and High Quality Transit Corridors (HQTCS), and their surrounding areas in one-half mile radius distance, as specified in Section 21155.(b)(3). Major transit stops and HQTCS are extracted from 2045 plan year data of the Draft Connect SoCal. SCAG's High Quality Transit Area (HQTA) is within one-half mile from Major Transit Stops and HQTCS and developed based on the language in SB375. Please note that this map may undergo changes as SCAG continues to update its transportation network as part of the Connect SoCal development process and SCAG shall not be responsible for local jurisdiction's use of this map. Updates to this information will be forthcoming as information becomes available.

Data Source: SCAG, County Transportation Commissions, 2019 | Map Created: 6/18/2019

Disclaimer: The information shown on this map reflect jurisdiction's input submitted during the Local Input and Envisioning Process for the Connect SoCal. SCAG shall not be responsible for user's misuse or misrepresentation of this map. For the details regarding the sources, methodologies and contents of this map, please refer to the SCAG Data/Map Book or contact RTPLocalInput@scag.ca.gov.



Legend:

Your Selections

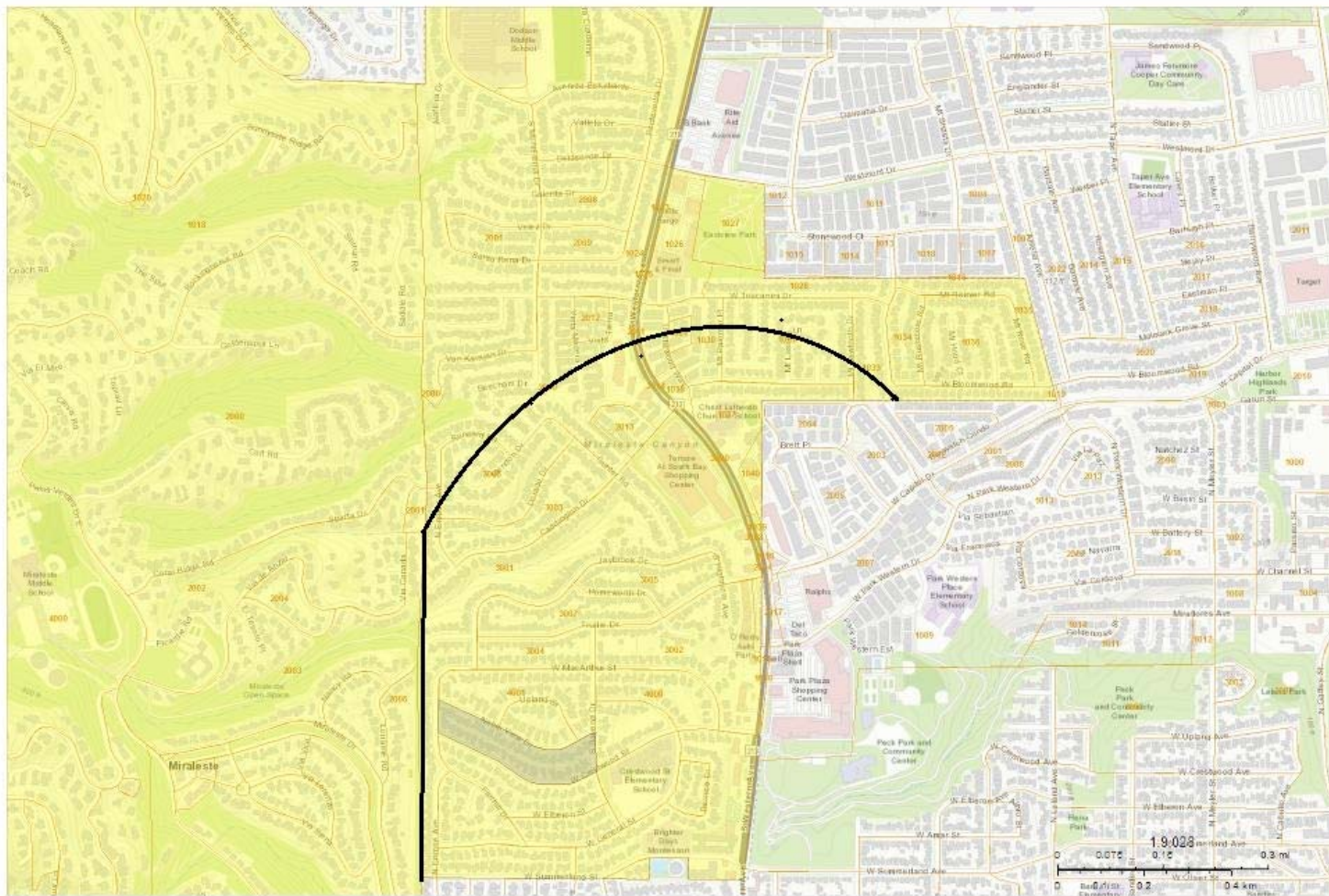
- 2010 boundaries were used to map 'Your Selections'

Selection Results

- 2010 boundaries were used to map 'Selection Results'

Boundaries

- No Legend



These are block numbers