

# TRENDING

	2000		2020
<b>POPULATION</b>			
TOTAL POPULATION	16 MILLION	▲	19.2 MILLION
PERCENT OF CALIFORNIA POPULATION	48.8%	▼	48.0%
ADULTS W/ HIGH SCHOOL DIPLOMA+	72.9%	▲	81.4%
ADULTS W/ BACHELOR'S DEGREE+	24.3%	▲	31.5%
FOREIGN BORN POPULATION	31.0%	▼	29.6%
<b>HOUSEHOLDS</b>	2000		2020
TOTAL HOUSING UNITS	5.4 MILLION	▲	6.6 MILLION
RENTER OCCUPIED UNITS	45.2%	▲	47.3%
MEDIAN HOUSEHOLD INCOME	\$69,254	▲	\$71,192
FAMILIES LIVING BELOW POVERTY	12.2%	▼	9.8%
<b>RACE/ETHNICITY</b>	2000		2020
NON-HISPANIC BLACK/AFRICAN AMERICAN	7.3%	▼	6.2%
NON-HISPANIC ASIAN/AMERICAN INDIAN/OTHERS	13.4%	▲	16.6%
HISPANIC/LATINO	40.6%	▲	47.0%
NON-HISPANIC WHITE	38.9%	▼	30.3%
<b>ECONOMY</b>	2000		2020
GROSS REGIONAL PRODUCT	\$953 BILLION <small>DUE TO INFLATION</small>	▲	\$1,303 BILLION
RANKING AMONG ALL NATIONAL ECONOMIES	11 <sup>TH</sup>	▼	15 <sup>TH</sup>
SHARE OF U.S. INTERNATIONAL TRADE	11.5%	▲	13.1%
WAGE/SALARY JOBS	6.8 MILLION	▲	8.1 MILLION
UNEMPLOYMENT RATE	5.0%	▼	4.4%
TAXABLE SALES	\$315.5 BILLION <small>DUE TO INFLATION</small>	▲	\$340.2 BILLION
CALIFORNIA TAXABLE SALES [%]	44.7%	▲	46.7%
<b>AIR QUALITY</b>	2000		2020
SOUTH COAST PM <sub>2.5</sub> ANNUAL AVERAGE CONCENTRATION OVER FEDERAL STANDARD [%]	135%	▼	19.3%



900 Wilshire Blvd., Ste. 1700  
Los Angeles, CA 90017  
(213) 236-1800 | scag.ca.gov

**OUR REGIONAL OFFICES**  
In addition to its main office, SCAG has regional offices throughout the region to serve its membership.

**IMPERIAL COUNTY**  
1503 N. Imperial Ave., Ste. 104  
El Centro, CA 92243  
(213) 236-1967

**ORANGE COUNTY**  
600 S. Main St., Ste. 741  
Orange, CA 92868  
(213) 236-1997

**RIVERSIDE COUNTY**  
3403 10th St., Ste. 805  
Riverside, CA 92501  
(951) 784-1513

**SAN BERNARDINO COUNTY**  
1170 W. 3rd St., Ste. 140  
San Bernardino, CA 92410  
(213) 236-1925

**VENTURA COUNTY**  
4001 Mission Oaks Blvd., Ste. L  
Camarillo, CA 93012  
(213) 236-1960

AJ #2948

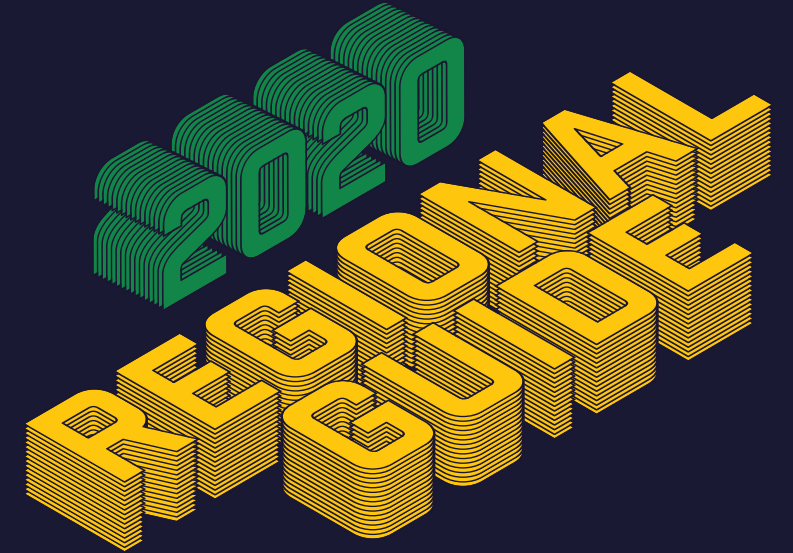
**OUR VISION**  
Southern California's Catalyst  
for a Brighter Future

**OUR MISSION**  
To foster innovative regional solutions that improve the lives of Southern Californians through inclusive collaboration, visionary planning, regional advocacy, information sharing and promoting best practices.

**ABOUT SCAG**  
Founded in 1965, the Southern California Association of Governments (SCAG) is the nation's largest Metropolitan Planning Organization (MPO) and Council of Governments (COG), encompassing six counties, 191 cities and 19.2 million residents. In addition to conducting research and developing long-range transportation plans, SCAG convenes local governments and agencies to address regional transportation, land use and other issues of mutual concern.

**CONTACT**  
For questions on this material, please contact Tom Vo at vo@scag.ca.gov or (213) 236-1930.

Digital version available at  
scag.ca.gov/regionalguide



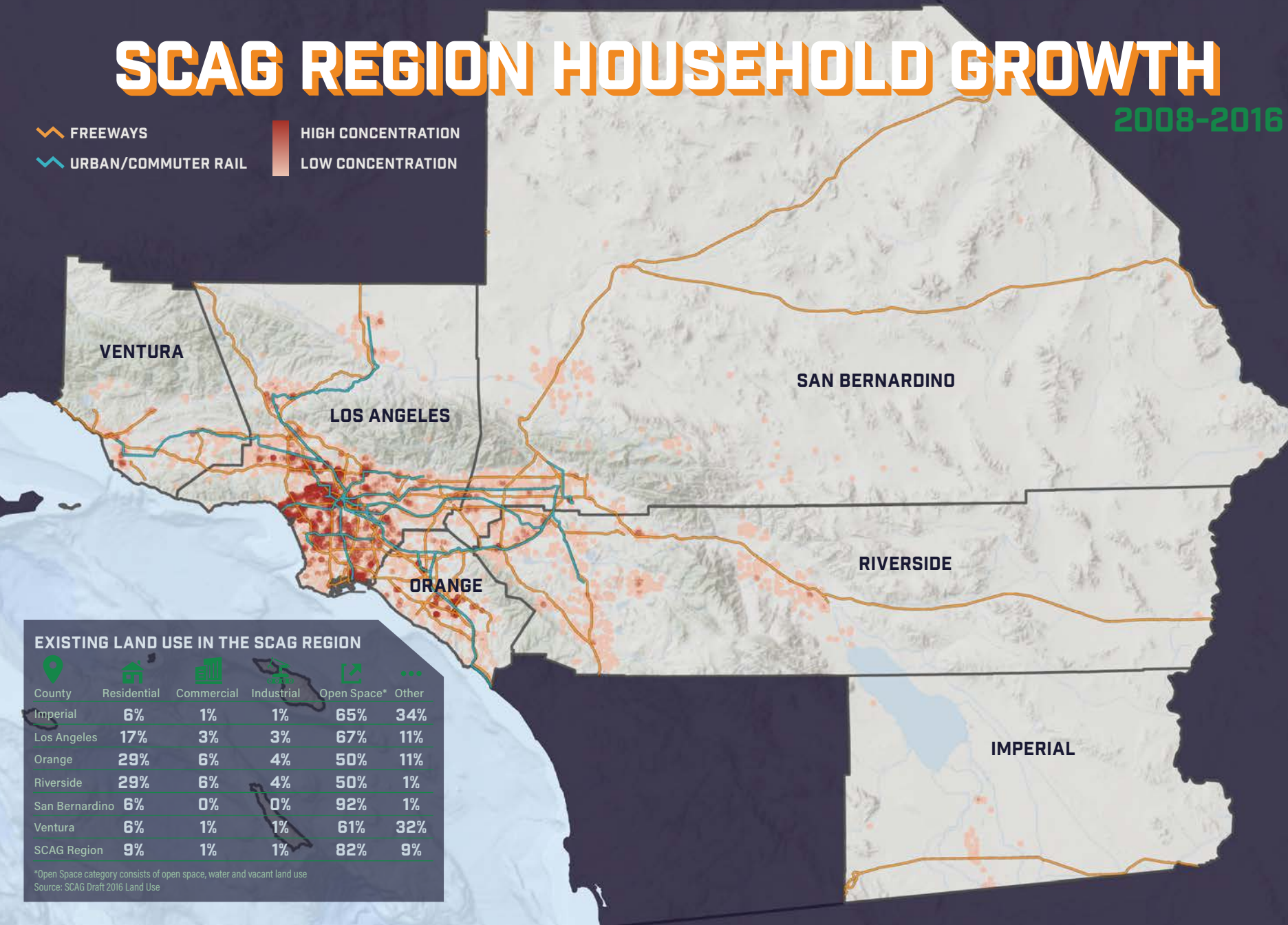
**SCAG.CA.GOV**



# SCAG REGION HOUSEHOLD GROWTH

2008-2016

- FREEWAYS
- URBAN/COMMUTER RAIL
- HIGH CONCENTRATION
- LOW CONCENTRATION



## EXISTING LAND USE IN THE SCAG REGION

County	Residential	Commercial	Industrial	Open Space*	Other
Imperial	6%	1%	1%	65%	34%
Los Angeles	17%	3%	3%	67%	11%
Orange	29%	6%	4%	50%	11%
Riverside	29%	6%	4%	50%	1%
San Bernardino	6%	0%	0%	92%	1%
Ventura	6%	1%	1%	61%	32%
SCAG Region	9%	1%	1%	82%	9%

\*Open Space category consists of open space, water and vacant land use  
Source: SCAG Draft 2016 Land Use

# HOW WE MOVE

## COMMUTING

- 16.2 MILLION** REGISTERED VEHICLES
- 12.9 MILLION** LICENSED DRIVERS
- 32 MINUTES** AVERAGE COMMUTE TO WORK
- 76.3%** COMMUTERS WHO DRIVE ALONE
- 9.9%** COMMUTERS WHO CARPOOL
- 4.1%** COMMUTERS WHO USE PUBLIC TRANSIT
- 5.7%** WORK FROM HOME
- 4.1%** OTHERS (COMMUTERS WHO WALK, BIKE, ETC.)

## BUS

- 1.45 MILLION** AVERAGE WEEKDAY BUS BOARDINGS
- 5,893** BUSES IN OPERATION

## LAND AREA

- 38,000** SQUARE MILES IN THE REGION
- 37,804** SQUARE FEET OF OPEN SPACE PER CAPITA
- 1,121** MILES OF INTERSTATE FREEWAY
- 18,652** MILES OF PRINCIPAL, MINOR AND ARTERIAL ROADS

## RAIL

- 317,000** AVERAGE WEEKDAY URBAN RAIL BOARDINGS
- 93** TOTAL URBAN RAIL STATIONS
- 98** TOTAL URBAN RAIL ROUTE MILES
- 39,500** AVERAGE WEEKDAY COMMUTER RAIL BOARDINGS
- 62** TOTAL COMMUTER RAIL STATIONS
- 583** TOTAL COMMUTER RAIL ROUTE MILES

## ACTIVE TRANSPORTATION

- 5,075** MILES OF EXISTING BIKEWAYS
- 2.7%** SHARE OF COMMUTERS WHO WALK AND BIKE

## AVIATION/PORTS

- 110.2** MILLION ANNUAL AIR PASSENGERS
- 200** NONSTOP AIRLINE DESTINATIONS
- 40%** SHARE OF U.S. CONTAINERIZED IMPORTS
- 25%** SHARE OF U.S. CONTAINERIZED EXPORTS

Sources: POPULATION, HOUSEHOLD, and ETHNICITY: DOF, Census ACS 2018 (1-Year), ECONOMY: IMF, BEA, CA EDD, Census, CDTFA, gross regional product 2019, taxable sales 2018; AIR QUALITY: SCAQMD. COMMUTING: CA DMV 2019 and ACS 2018. AVIATION/PORTS: 2018 North American Airport Traffic Survey, Journal of Commerce, San Pedro Bay Ports; tons, passengers, and ranking are 2018. RAIL/BUS: LA Metro and NTD. Urban rail stations and miles are 2020. Buses and fixed route transit providers are 2018. All dollars are converted to 2018 dollars.