

# WHAT IS SCAG

Founded in 1965, the Southern California Association of Governments (SCAG) is the nation's largest Metropolitan Planning Organization (MPO) and Council of Governments (COG), encompassing six counties, 191 cities and 19.1 million residents. In addition to conducting research and developing long-range transportation plans, SCAG convenes local governments and agencies to address regional transportation, land use and other issues of mutual concern.

## SCAG REGION AT A GLANCE



191 CITIES



15th LARGEST ECONOMY IN THE WORLD



6 COUNTIES



38,618 SQUARE MILES



48.3% OF TOTAL STATE POPULATION



19.1 MILLION PEOPLE IN THE REGION



## OUR VISION

Southern California's Catalyst for a Brighter Future

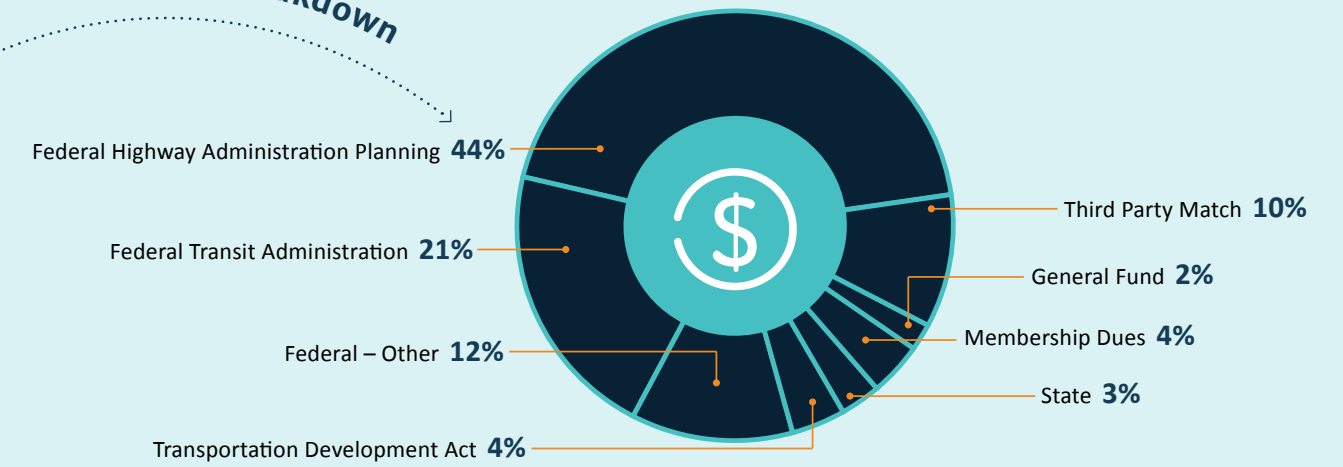
## OUR MISSION

To foster innovative regional solutions that improve the lives of Southern Californians through inclusive collaboration, visionary planning, regional advocacy, information sharing, and promoting best practices.

## HOW SCAG IS FUNDED

SCAG receives most of its funding from the federal government through Consolidated Planning Grants from the Federal Highway Administration (FHWA) and the Federal Transit Administration (FTA). In addition to federal sources, SCAG applies for and receives funding from Caltrans. SCAG receives supplementary funding through state and local sources, in addition to third party matching.

### Funding Breakdown



## KEY INITIATIVES & PROGRAMS



### TRANSPORTATION

#### REGIONAL TRANSPORTATION PLAN/SUSTAINABLE COMMUNITIES STRATEGY (RTP/SCS)

Every four years, SCAG develops and implements a Regional Transportation Plan/Sustainable Communities Strategy, a long-range visioning plan that balances future mobility and housing needs with economic, environmental and public health goals.

#### TRANSIT & PASSENGER RAIL

SCAG collaborates with various state and regional stakeholders to plan regional, intercity and interregional mobility improvements to effectively move people throughout the region.

#### GOODS MOVEMENT

SCAG evaluates the regional goods movement system and identifies strategies to address current and future goods movement challenges while strengthening national awareness of Southern California's contribution to the national economy through goods movement activities.

#### ACTIVE TRANSPORTATION

SCAG engages and supports local communities in developing active transportation plans and projects to encourage the use of human-powered transportation such as walking and biking.



### FEDERAL & STATE COMPLIANCE

#### FEDERAL TRANSPORTATION IMPROVEMENT PROGRAM (FTIP)

Every two years, SCAG develops the Federal Transportation Improvement Program (FTIP), a comprehensive list of planned or proposed transportation projects over a six-year period.

#### REGIONAL HOUSING NEEDS ASSESSMENT (RHNA)

SCAG conducts the Regional Housing Needs Assessment (RHNA) every eight years to determine each jurisdiction's "fair share" of the region's future housing need by income group based on existing need and anticipated growth.

#### AIR QUALITY

SCAG must ensure its programs comply with federal, state, and regional air quality requirements, so that transportation activities will not cause or contribute to new air quality violations, worsen existing violations, or delay timely attainment of the prescribed air quality standards.



### DATA, MODELING, & FORECASTING

#### TRANSPORTATION MODELING

SCAG develops, maintains and operates the Regional Transportation Model in support of federal and state mandated planning activities including the RTP/SCS, FTIP, air quality management plans, corridor and special studies and strategic initiatives.

#### REGIONAL AFFILIATE OF THE US CENSUS BUREAU'S CALIFORNIA STATE DATA CENTER

SCAG maintains and makes available a range of U.S. Census Bureau data products for the Southern California region and provides relevant data and analyses to local jurisdictions and other stakeholders in the SCAG region.

#### GEOGRAPHIC INFORMATION SYSTEMS (GIS) SERVICES PROGRAM

The Geographic Information Systems (GIS) Services Program provides training, resources and technical support to local jurisdictions, universities, stakeholders and partners so that they can utilize this technology.

#### GROWTH FORECASTING

SCAG develops various growth projections including population, households, and employment, which serve as the basis for developing federal and state mandated long-range planning efforts.



### SUSTAINABILITY

#### SUSTAINABILITY PROGRAM

The Sustainability Program develops initiatives that support the reduction of greenhouse gas (GHG) emissions and vehicle miles traveled (VMT), such as integrating land use and transportation planning. Encouraging infill with high-quality transit and climate adaptation are principal focus areas.

#### SUSTAINABLE PLANNING GRANTS

To implement the strategies in the RTP/SCS, the Sustainability Planning Grants Program offers funding and technical assistance to SCAG member jurisdictions to assist local planning and policy efforts in three categories: Integrated Land Use, Active Transportation and Green Region.

#### ELECTRIC VEHICLE (EV) PROGRAM READINESS STRATEGIES

To help implement the State's goals for zero-emission vehicles, SCAG is studying how to expand electric vehicle charging infrastructure in residential, commercial and public buildings. EVs will play a critical role in helping the region reduce greenhouse gas emissions (GHG) and other air pollutants.

## 2021-2022 RC OFFICERS

**Clint Lorimore**  
City of Eastvale  
RC District #4



**PRESIDENT**

**Jan C. Harnik**  
Riverside County  
Transportation Commission  
(RCTC)



**FIRST VICE-PRESIDENT**

**Carmen Ramirez**  
County of Ventura



**SECOND VICE-PRESIDENT**

**Rex Richardson**  
City of Long Beach  
RC District #29



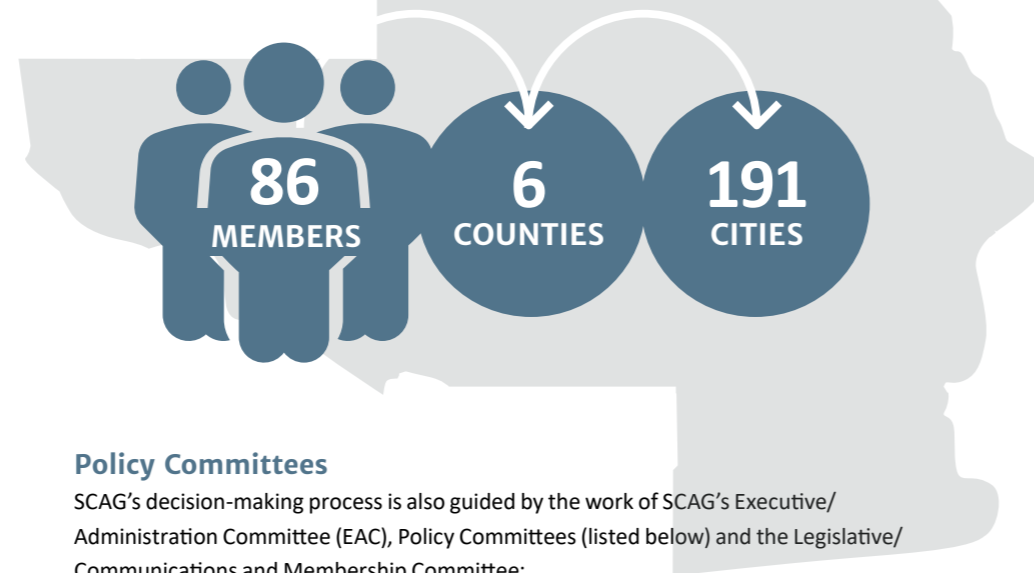
**IMMEDIATE PAST PRESIDENT**



## HOW ARE DECISIONS MADE AT SCAG

### Regional Council (RC)

The Regional Council is SCAG's 86-member governing board. This decision-making body is comprised of local elected officials representing the six counties and 191 cities in the SCAG region, as well as representatives from each of the counties and county transportation commissions, Transportation Corridors Agency, recognized tribal governments, and air quality districts, as well as a public transportation representative. The Regional Council convenes monthly and has general authority to conduct the affairs of SCAG and implements the policy direction provided at the annual General Assembly of the membership. In addition, the Regional Council acts upon policy recommendations from SCAG policy committees and external agencies, appoints committees to study specific problems and programs, and amends, decreases, or increases the proposed budget to be reported to the General Assembly.



### Policy Committees

SCAG's decision-making process is also guided by the work of SCAG's Executive/Administration Committee (EAC), Policy Committees (listed below) and the Legislative/Communications and Membership Committee:

- Transportation (TC)
- Community, Economic and Human Development (CEHD)
- Energy and Environment (EEC)

Members of the Regional Council each serve on one Policy Committee for a two-year term. Each of the 16 subregional organizations also appoint Policy Committee representatives. Much of the discussion and debate on issues occurs in the Policy Committees and all issues considered by the Regional Council must originate through one or more of the committees.

### General Assembly (GA)

SCAG is governed by the General Assembly, which includes one official delegate from each of SCAG's member cities (except for the City of Los Angeles which has three), one from each county in the SCAG region, and one from each member county transportation commission. General Assembly representatives consider and adopt the SCAG Bylaws and the General Fund budget, as well as elect the incoming President, First Vice President, and Second Vice President. This body meets annually at the Regional Conference and General Assembly.

## WHAT ARE THE POLICY COMMITTEES

### Executive Administration Committee (EAC)

The Executive Administration Committee is responsible for developing policy recommendations to the Regional Council on administration, human resources, budgets, finance, operations, communications, or any other matter specifically referred to the Committee by the Regional Council.

**CHAIR:** Clint Lorimore, City of Eastvale, RC District #4

**1ST VICE CHAIR:** Jan C. Harnik, Riverside County Transportation Commission (RCTC)

**2ND VICE CHAIR:** Carmen Ramirez, County of Ventura

**IMMEDIATE PAST CHAIR:** Rex Richardson, Long Beach, RC District #29

### Transportation Committee (TC)

The role of the Transportation Committee is to study problems, programs and other matters which pertain to the regional issues of mobility, air quality, transportation control measures and communications, and make recommendations on such matters to the Regional Council. The TC approves release of the draft Regional Transportation Plan/Sustainable Communities Strategy (RTP/SCS) for public comment and recommends the RTP/SCS for approval by the Regional Council.

**CHAIR:** Sean Ashton, City of Downey, RC District #25

**VICE-CHAIR:** Arthur C. Brown, City of Buena Park, RC District #21

### Community, Economic & Human Development Committee (CEHD)

The role of the Community, Economic and Human Development Committee is to study problems, programs and other matters which pertain to the regional issues of community, economic and human development and growth. This committee reviews projects, plans and programs of regional significance for consistency and conformity with applicable regional plans. The CEHD recommends the Regional Council adopt the region's growth forecast and the state-mandated Regional Housing Needs Assessment (RHNA).

**CHAIR:** Jorge Marquez, City of Covina, RC District #33

**VICE-CHAIR:** Frank Yokoyama, City of Cerritos, RC District #23

### Energy & Environment Committee (EEC)

The Energy and Environment Committee considers environmental and energy issues of regional significance, including but not limited to air quality, water quality, solid and hazardous waste, habitat preservation, environmental justice and environmental impact analysis. The EEC approves release of the Draft Program Environment Impact Report (PEIR) for the RTP\SCS and recommends the Regional Council approve the RTP\SCS PEIR.

**CHAIR:** David Pollock, City of Moorpark, RC District #46

**VICE-CHAIR:** Deborah Robertson, City of Rialto, RC District #8

### Legislative/Communications & Membership Committee (LCMC)

The Legislative/Communications and Membership Committee provides guidance and recommendations to the Regional Council regarding legislative matters impacting the region, policy direction on SCAG's communications strategy, outreach, issues and materials, SCAG membership benefits and sponsorship opportunities.

**CHAIR:** Alan D. Wapner, San Bernardino County Transportation Authority (SBCTA)

**VICE-CHAIR:** Peggy Huang, Transportation Corridor Agencies (TCA)



**MAIN OFFICE**  
900 Wilshire Blvd., Ste. 1700,  
Los Angeles, CA 90017  
Tel: (213) 236-1800

### REGIONAL OFFICES

**IMPERIAL COUNTY**  
1503 North Imperial Ave., Ste. 104  
El Centro, CA 92243  
Tel: (213) 236-1967

**ORANGE COUNTY**  
OCTA Building  
600 South Main St., Ste. 741  
Orange, CA 92868  
Tel: (213) 236-1997

**RIVERSIDE COUNTY**  
3403 10th St., Ste. 805  
Riverside, CA 92501  
Tel: (951) 784-1513

**SAN BERNARDINO COUNTY**  
1170 West 3rd St., Ste. 140  
San Bernardino, CA 92410  
Tel: (213) 236-1925

**VENTURA COUNTY**  
4001 Mission Oaks Blvd., Ste. L  
Camarillo, CA 93012  
Tel: (213) 236-1960

[scag.ca.gov](http://scag.ca.gov)

### FOR MORE INFORMATION

Please visit the SCAG website at: [www.scag.ca.gov](http://www.scag.ca.gov). For all inquiries regarding SCAG's Regional Council and leadership, please contact Maggie Aguilar, Clerk of the Board at (213) 630-1420 or [aguilarm@scag.ca.gov](mailto:aguilarm@scag.ca.gov).