

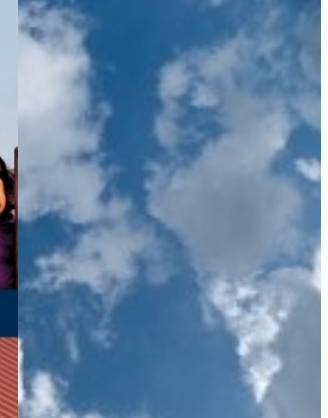


SB 535:

Climate Investments for Disadvantaged Communities

August 6, 2015

J.R. DeShazo
Director



UCLA Luskin School of Public Affairs

**Luskin
Center**
FOR INNOVATION

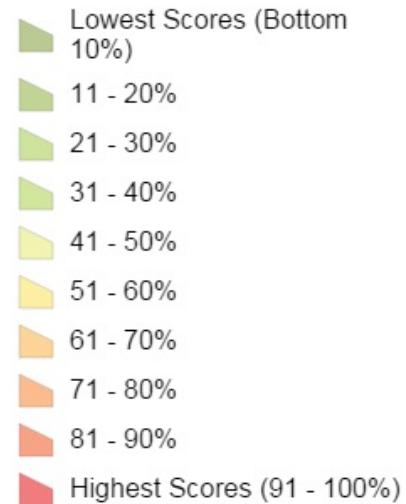
SB 535 (de León)

- ✓ Ensures a minimum of 25% of climate investments (via the Greenhouse Gas Reduction Fund) benefit disadvantaged communities
- ✓ Requires at least 10% of the investments are for projects located in disadvantaged communities
- ✓ Directs CalEPA to define “disadvantaged communities”

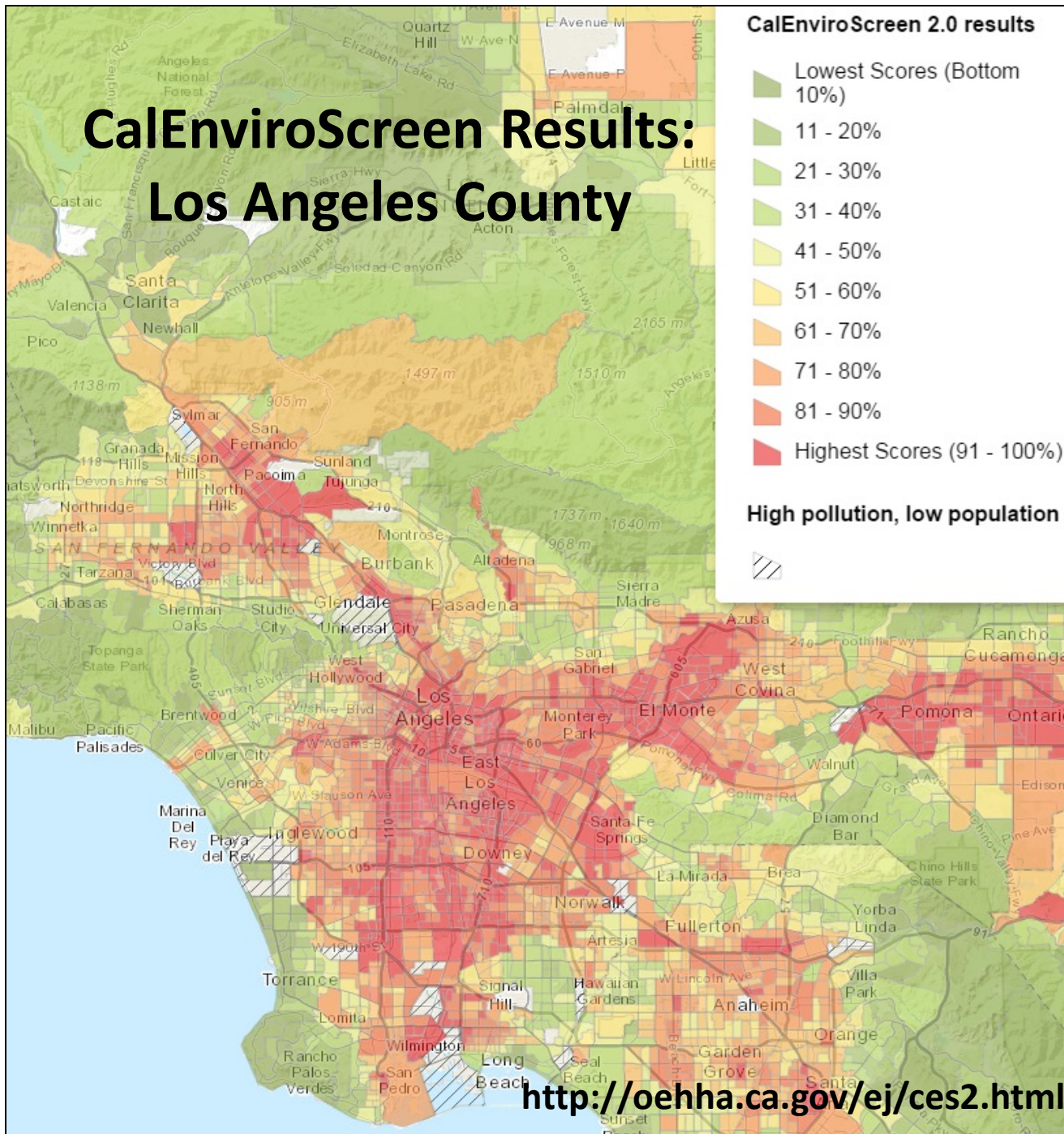


CalEnviroScreen Results: Los Angeles County

CalEnviroScreen 2.0 results



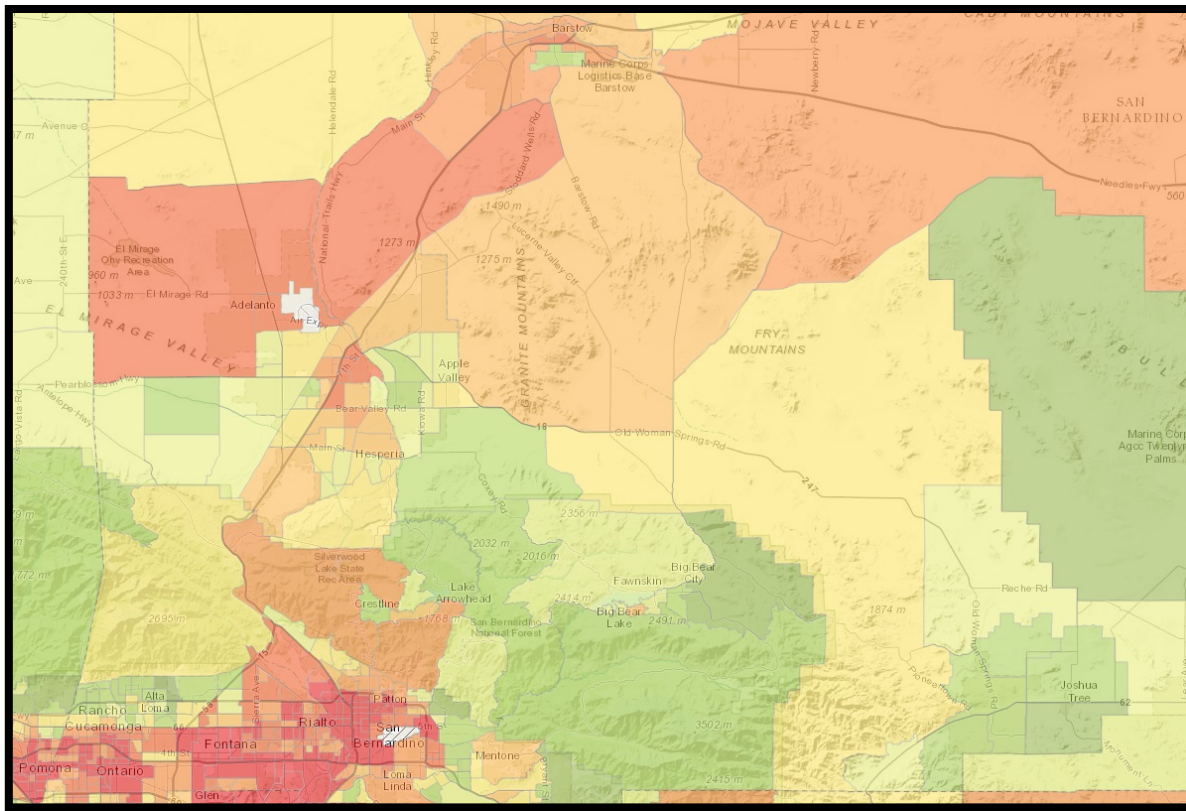
High pollution, low population



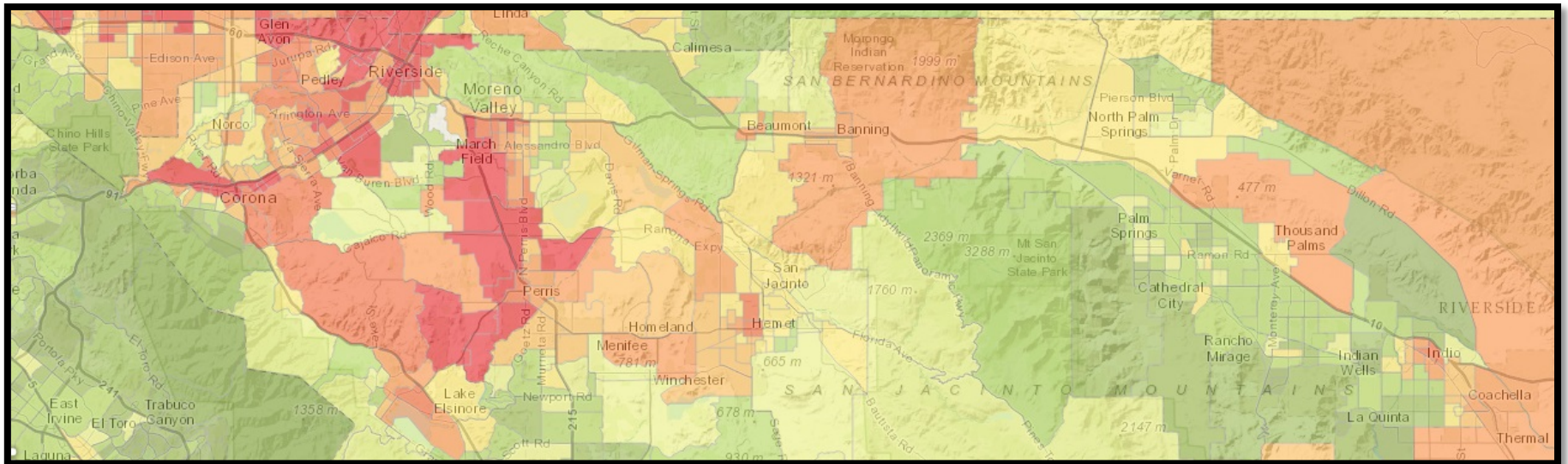
<http://oehha.ca.gov/ej/ces2.html>

Public Affairs

oehha
er
SUPPORT



**San
Bernardino
County
(partial)**



**Riverside County
(partial)**

Program (Agency)	FY 2014-15 Appropriation (\$M)	Potential Funds to Benefit Disadvantaged Communities*			
		Benefiting		Subtotal Located In**	
		%	(\$M)	%	(\$M)
High Speed Rail (HSRA)***	\$250	---	---	---	---
Transit and Intercity Rail Capital Program (CalSTA / CTC)	\$25	25%	\$6	TBD	TBD
Low-Carbon Transit Operations (Caltrans)	\$25	32%	\$8	TBD	TBD
Affordable Housing and Sustainable Communities (SGC)	\$130	50%	\$65	TBD	TBD
Low Carbon Transportation (ARB)	\$200	50%	\$100	TBD	TBD
Low-Income Weatherization / Renewable Energy (CSD)	\$75	100%	\$75	100%	\$75
Energy Efficiency: Public Buildings (DGS)	\$20	TBD	TBD	TBD	TBD
Renewable Energy and Energy Efficiency (UC and CSU)	-	-	-	-	-
Water Action Plan: Water-Energy Efficiency (DWR)	\$30 <small>(AB 91 increase)</small>	TBD	TBD	TBD	TBD
Rebates for Appliances (CEC)	-	-	-	-	-
Water and Energy Technology (CEC)	-	-	-	-	-
Agricultural Energy and Operational Efficiency (CDFA)	\$25 <small>(AB 91 increase)</small>	TBD	TBD	TBD	TBD
Water Action Plan: Wetlands and Watershed Restoration (DFW)	\$25	TBD	TBD	TBD	TBD
Urban Forestry (CAL FIRE)	\$18	100%	\$18	55%	\$10
Forest Health (CAL FIRE)	\$24	TBD	TBD	TBD	TBD
Healthy Solis (CDFA)	-	-	-	-	-
Waste Diversion (CalRecycle)	\$25	10%	\$3	TBD	TBD
Total	\$872		\$275		\$85
			32%		10%

Opportunities and Challenges for SCAG Region

- Major new funding opportunity, over \$2.2 billion in upcoming fiscal yr.
- Lots of investment areas, all with local economic benefit potential for SoCal.
- SCAG region has more disadvantaged communities than any other in CA and projects benefiting disadvantaged communities receive “set-aside.”
- New and ambitious process for state to implement and locals to participate in.
- Many separate/siloed funding processes.
- Competitive funding process. No guarantee of funding by region.

Example:

Affordable Housing and Sustainable Communities Program

- \$400 million budget for fiscal year 2015-16. Largest appropriation from the GGRF after High Speed Rail.
- Much needed, new source of funding for affordable housing along transit.
- Administered by the Strategic Growth Council, in coordination with other agencies.
- Will be unmet demand in highly competitive funding process.
- Southern California did not fare as well as Northern California in receiving funding for 2014-15.
- Program is new and multiple agency involvement makes things complicated. Given implementation timeline, in essence only shovel ready projects are eligible initially.

Contact

J.R. DeShazo

deshazo@g.ucla.edu

310-267-5435

www.innovation.luskin.ucla.edu

UCLA Luskin School *of* Public Affairs

**Luskin
Center**
FOR INNOVATION